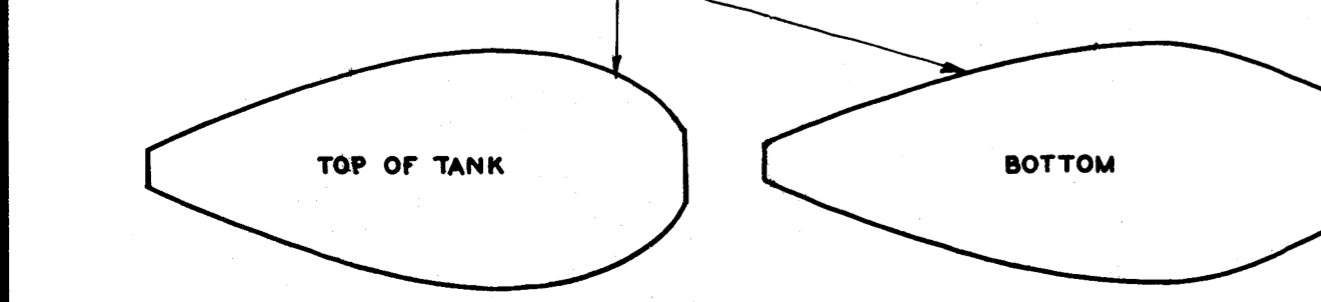


CUT ABOVE SHAPES FROM PLAN AND STICK TO BOTTOM OF FUSELAGE AS SHOWN ABOVE. LOWER WING IS ATTACHED TO BOTTOM OF FUSELAGE IN ONE PIECE. CRACK SPARS AT MIDDLE FOR DIHEDRAL ANGLE. COVER WING BEFORE IT IS ATTACHED TO FUSELAGE.

CUT FROM PLAN AND CEMENT TO THE TWO CURVED Balsa SIDE PIECES.

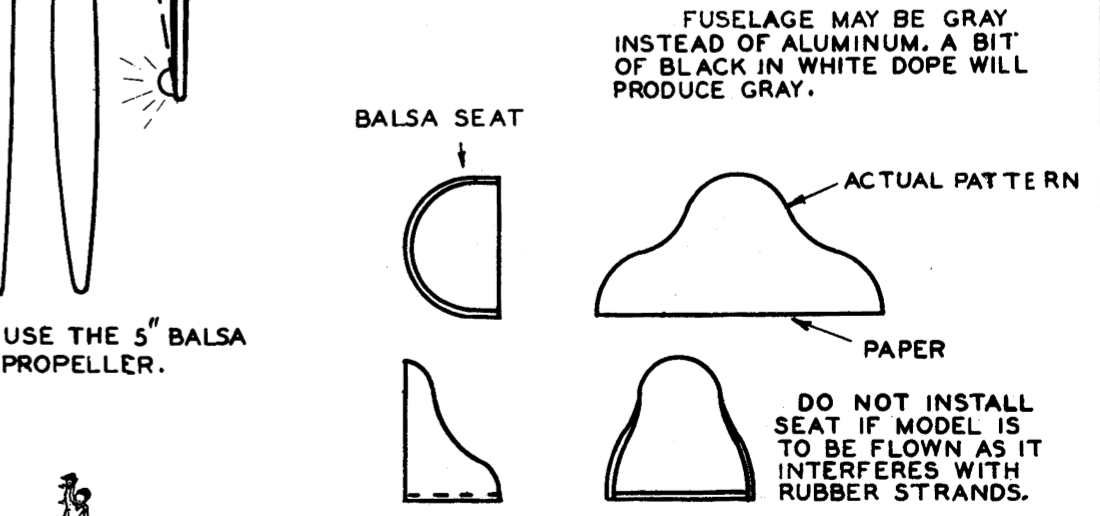
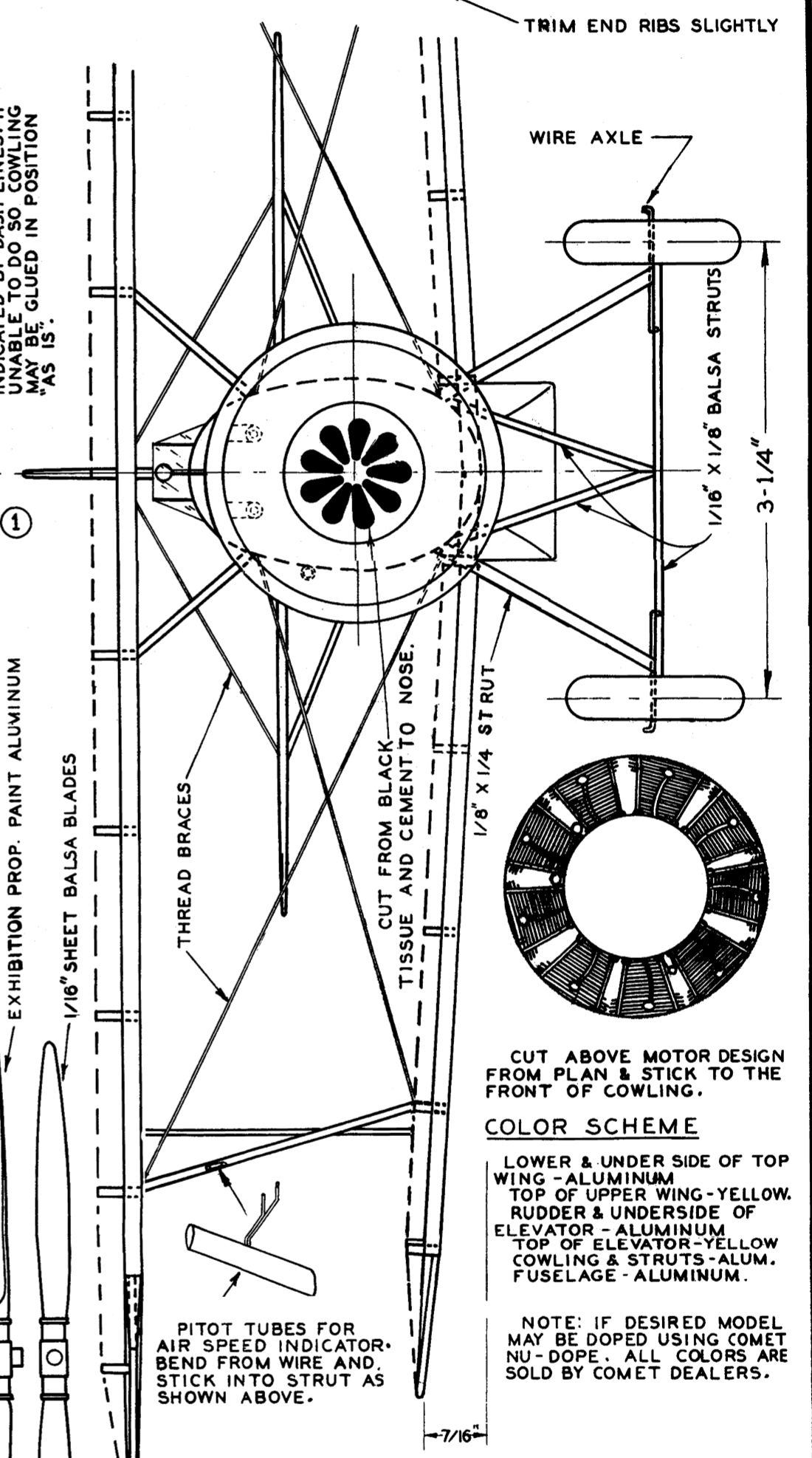
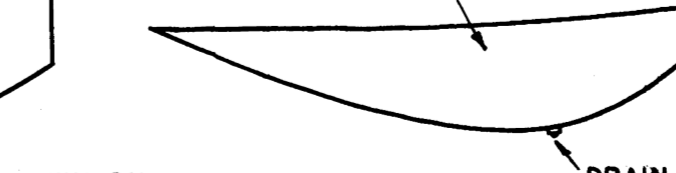


NOTE: BEGIN CONSTRUCTION OF MODEL BY PINNING BACKBONE STRIPS DOWN ON PLAN. THESE ARE CUT FROM THE PRINTED Balsa SHEET. NEXT CUT OUT FORMERS AND CEMENT TO BACKBONE STRIPS. A 1/16" SQ. BY 3-5/8" STRIP IS PLACED AT TOP REAR.

AUXILIARY GAS TANK

TO BE USED ONLY IF MODEL WILL NOT BE FLOWN AS IT ADDS UNNECESSARY WEIGHT.

CUT TWO SIDE PIECES FROM 1/16" SHEET Balsa. NOW MOISTEN THEM AND BEND TO SHAPE BY HOLDING AGAINST A LIGHTED ELECTRIC LIGHT BULB



DO NOT INSTALL SEAT IF MODEL IS TO BE FLOWN AS IT INTERFERES WITH RUBBER STRANDS.

U.S. NAVY BOEING FIGHTER F4B-4

RAY CHEVEDDEN 1-5-35 **The COMET MODEL AIRPLANE and SUPPLY CO. inc. Chicago, Ill.**