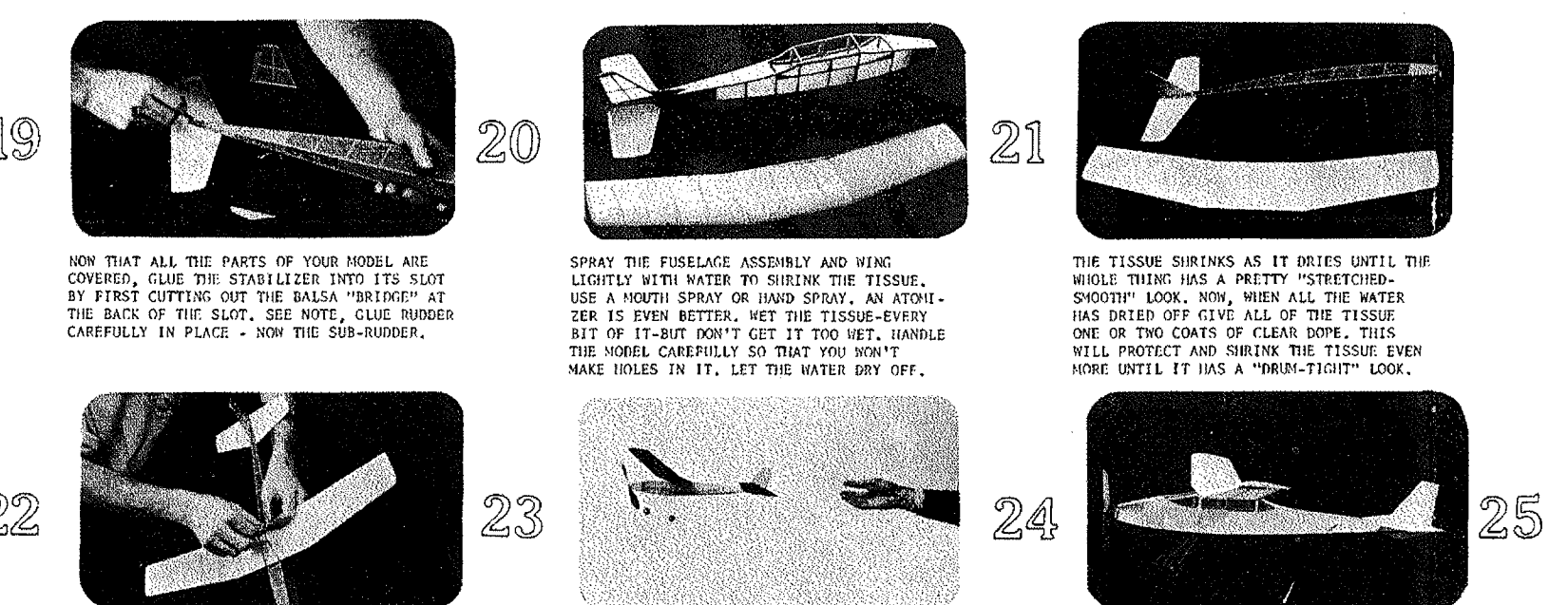
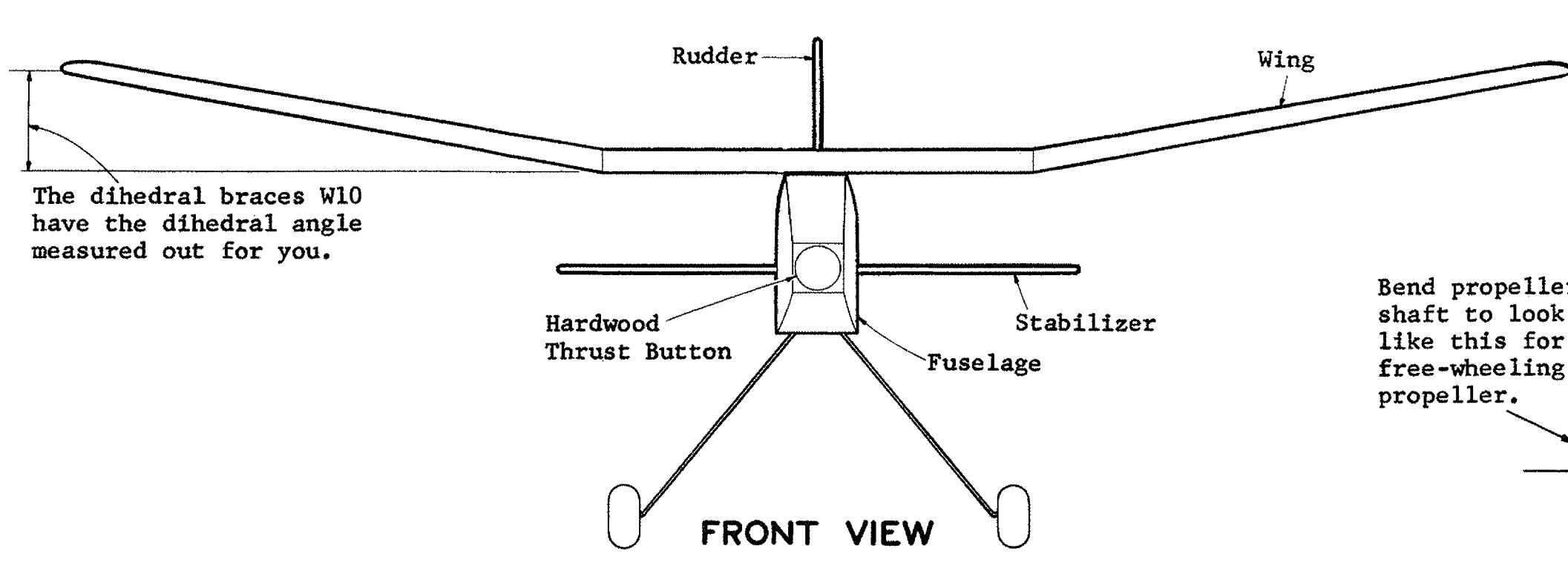


Take your time - you can't possibly finish the Meteor in one night or two. Plan on five or six nights - your model will fly better and hold up better.



IF YOU SLIDE THE WING BACK TOO FAR YOUR MODEL WILL DIVE. A DIVE IS THE OPPOSITE OF A STALL OR "DIP". THE MODEL WILL LOOK LIKE IT DOESN'T WANT TO FLY. IT WILL TURN TO THE RIGHT AND CLIMB DOWN. IF IT STILL "DIPS" SLIDE THE WING BACK UNTIL IT DOESN'T.

