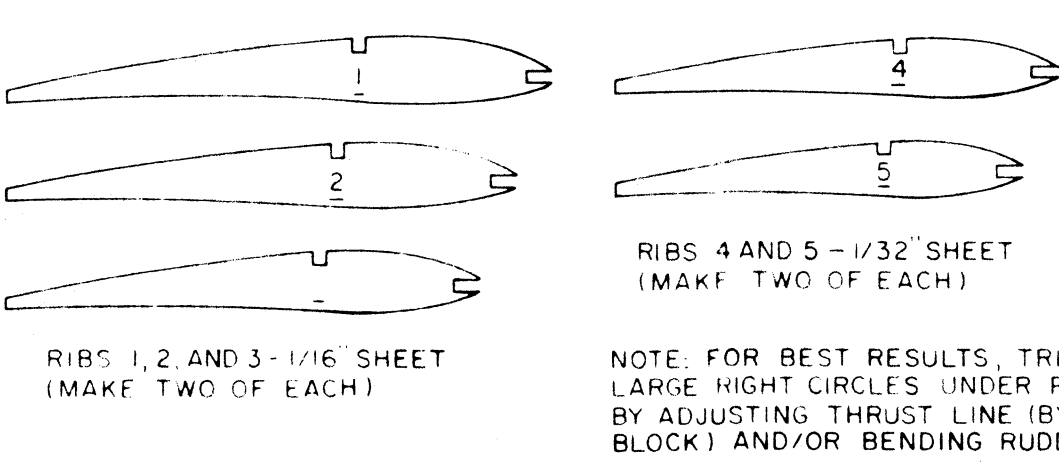
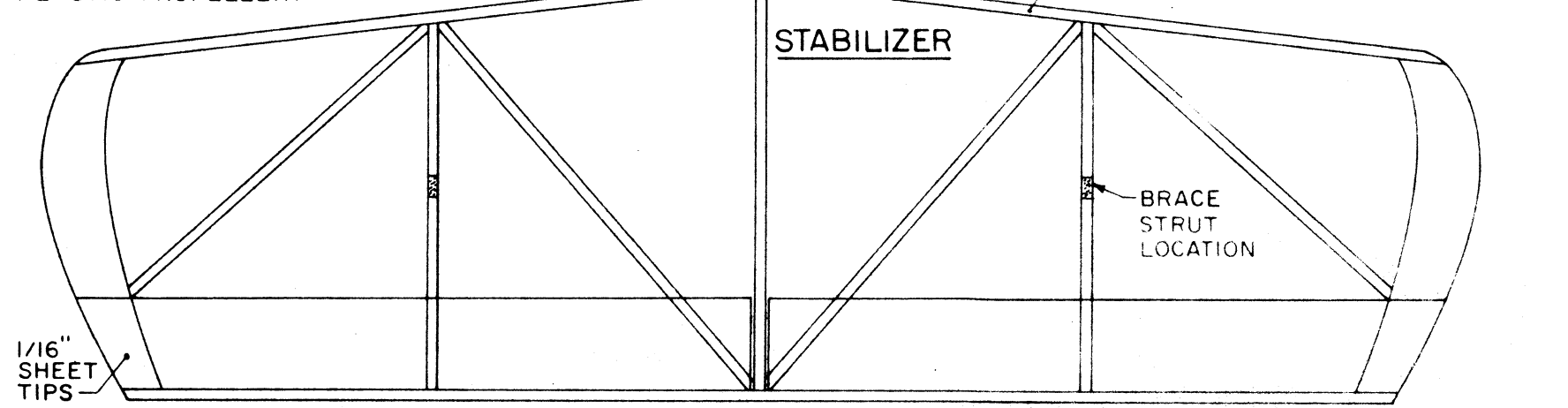
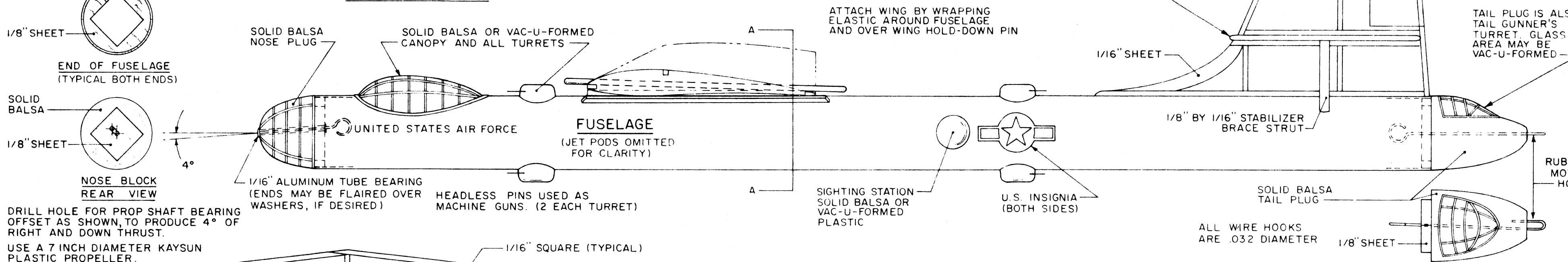
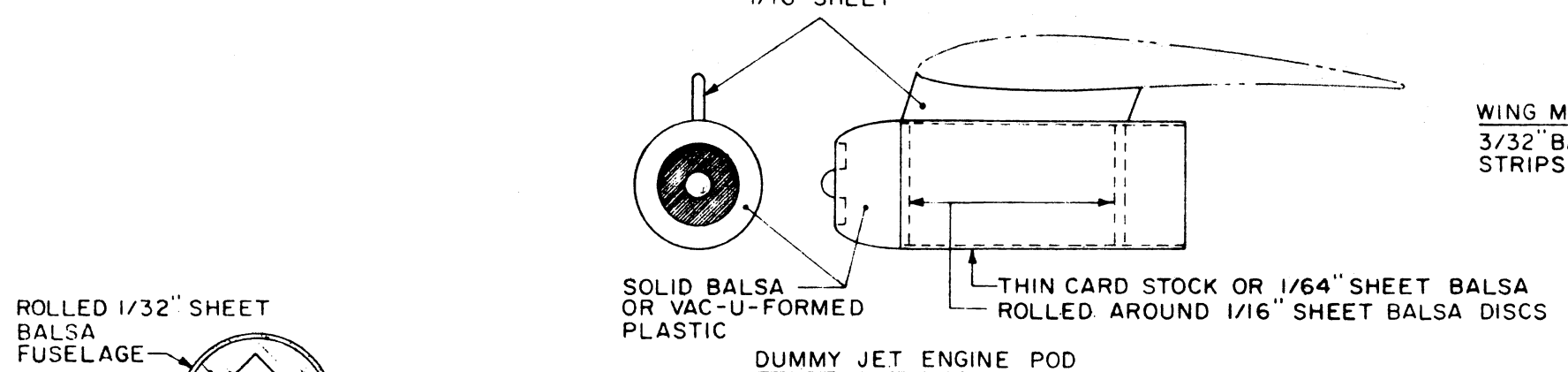
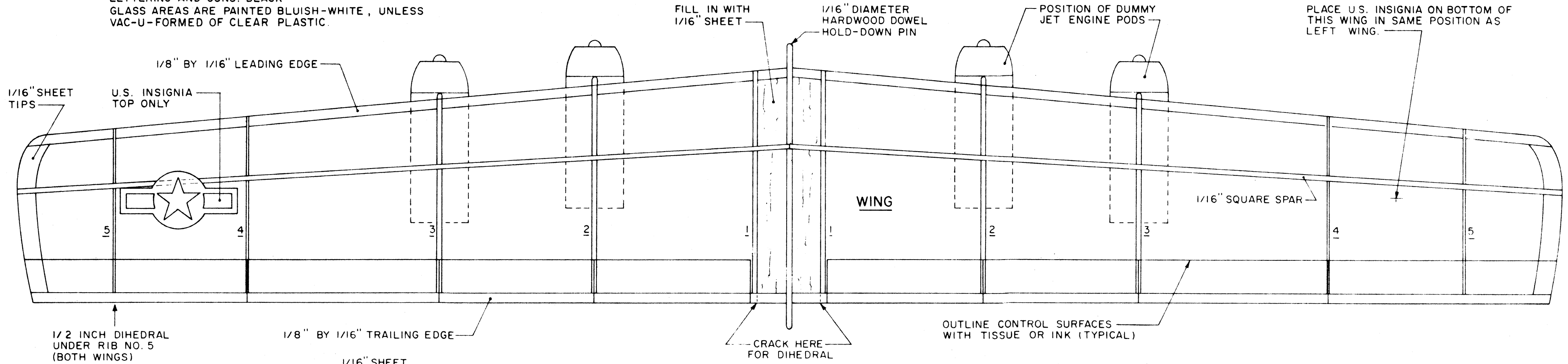


COLOR SCHEME: ALL SILVER. JET POD INTAKES AND OUTLETS: DULL BLACK
 LETTERING AND GUNS: BLACK
 GLASS AREAS ARE PAINTED BLuish-WHITE, UNLESS
 VAC-U-FORMED OF CLEAR PLASTIC.



POWER: ONE LOOP OF 1/4 INCH PIRELLI RUBBER 15 INCHES LONG.

NOTE: FOR BEST RESULTS, TRIM MODEL TO FLY IN LARGE RIGHT CIRCLES UNDER POWER AND IN GLIDE, BY ADJUSTING THRUST LINE (BY SHIMMING NOSE BLOCK) AND/OR BENDING RUDDER.

★ **FLYING ACES CLUB** ★
STRATEGIC BOMBER
 BY LT. DAVE STOTT F.A.C.
 © 1968 W.C. HANNAN