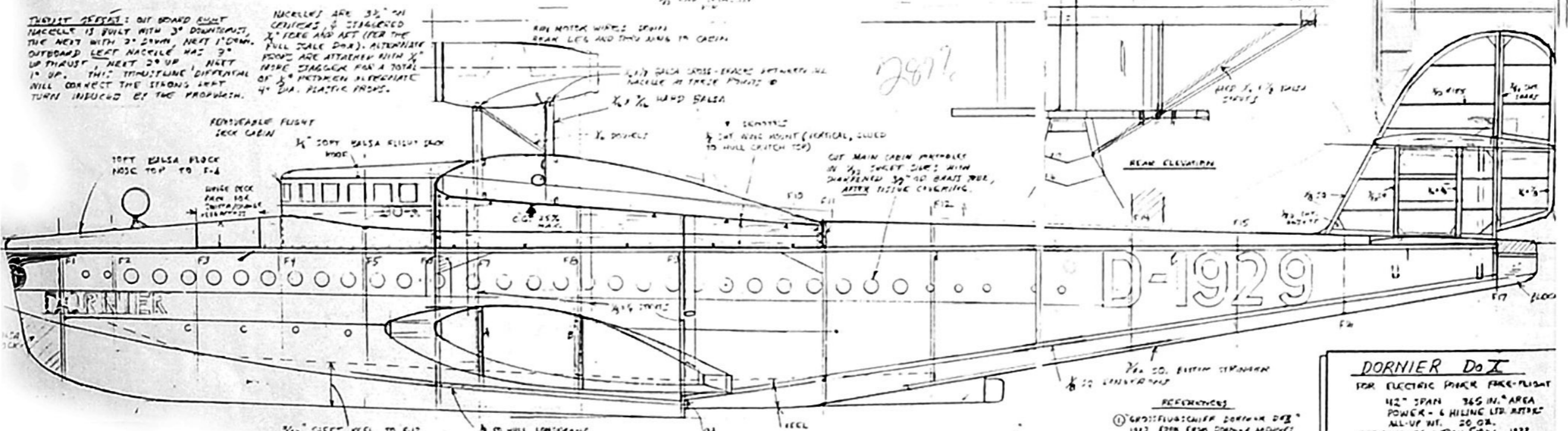
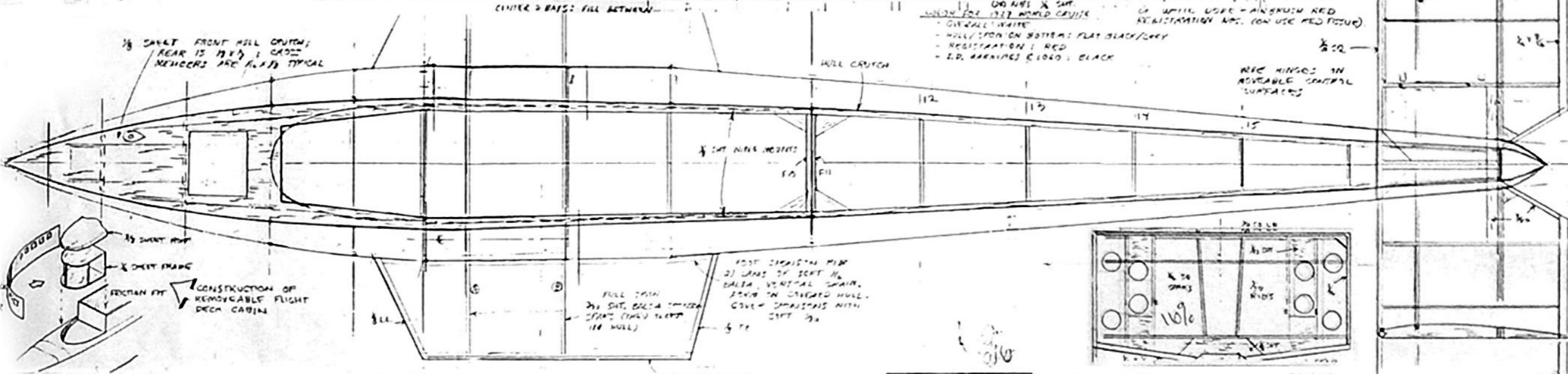
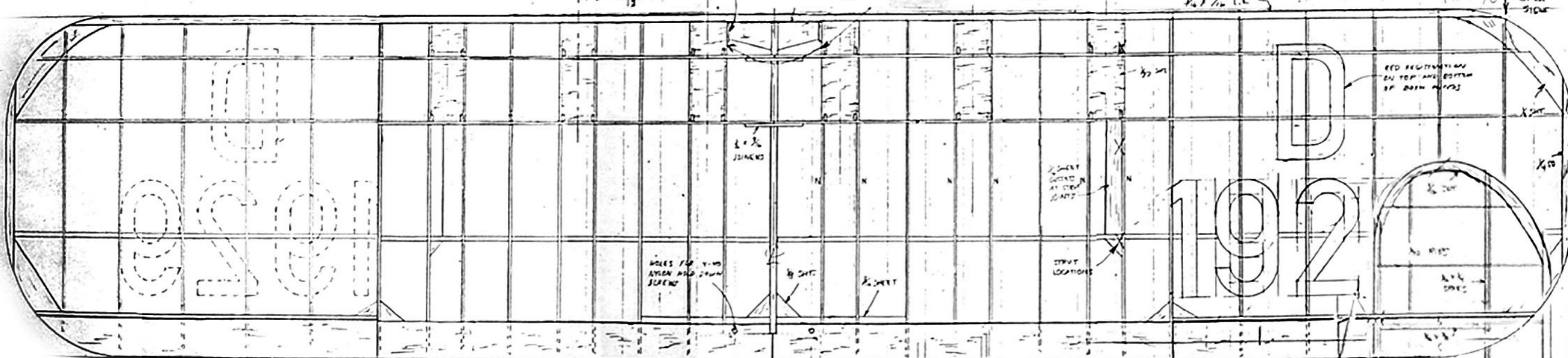


My 27" rubber version is loosely based on this 42" electric plan of the German DO-X by Don Srull.  
 Much of the structure was altered and lightened for rubber power. Italian pylons and nacelles were added.



THRUST SETTING: OUT BOARD RIGHT NACELLE IS BUILT WITH 3° DOWNCAST, THE NEXT WITH 2° DOWN, NEXT 1° DOWN. OUTBOARD LEFT NACELLE HAS 2° UP THRUST, NEXT 2° UP, NEXT 1° UP. THIS THROUSTING DIFFERENTIAL WILL CORRECT THE STRONG LEFT TURN INDUCED BY THE PROPULSION.

NACELLES ARE 32" IN LENGTH & STAGGERED 1/2" HERE AND 1/2" (FOR THE FULL TALE DOX). ALTERNATIVE PONES ARE ATTACHED WITH 1/2" MORE STAGGER FOR A TOTAL OF 3/4" BETWEEN ALTERNATE 4" DIA. PLASTIC FRONTS.

REMOVABLE FLIGHT DECK CABIN

10FT WALSA FLOOR NOSE TOP TO F-4

WHITE DECK FROM 104 INCHES FORWARD

3/16" SHEET KEEL TO F12

1/2" HULL CONSTRUCTION

ON PROTOTYPE MODEL, THE BOTTOM OF HULL FROM F11 FORWARD WAS COVERED WITH ULTRA-LIGHT FIBERGLASS CLOTH (6 MIL THICK), GLUED ON WITH THIN EPoxy.

REAR ELEVATION

REAR ELEVATION

REAR ELEVATION

REAR ELEVATION

REAR ELEVATION

REAR ELEVATION

REAR ELEVATION

REAR ELEVATION

REAR ELEVATION

REAR ELEVATION

**DORNIER Do X**  
 FOR ELECTRIC POWER FREE-FLIGHT  
 42" SPAN 365 IN. AREA  
 POWER - 6 HILLING LTD. MOTOR  
 ALL-UP WT. 20 GR.  
 DESIGNED BY DON SRULL 1977

REFERENCES  
 ① GROSSFLUGSCHIFF DORNIER DOX 1912 FROM DONALD MANNING  
 ② "AIR ENTHUSIAST" 413 1970

SHEET 1 OF