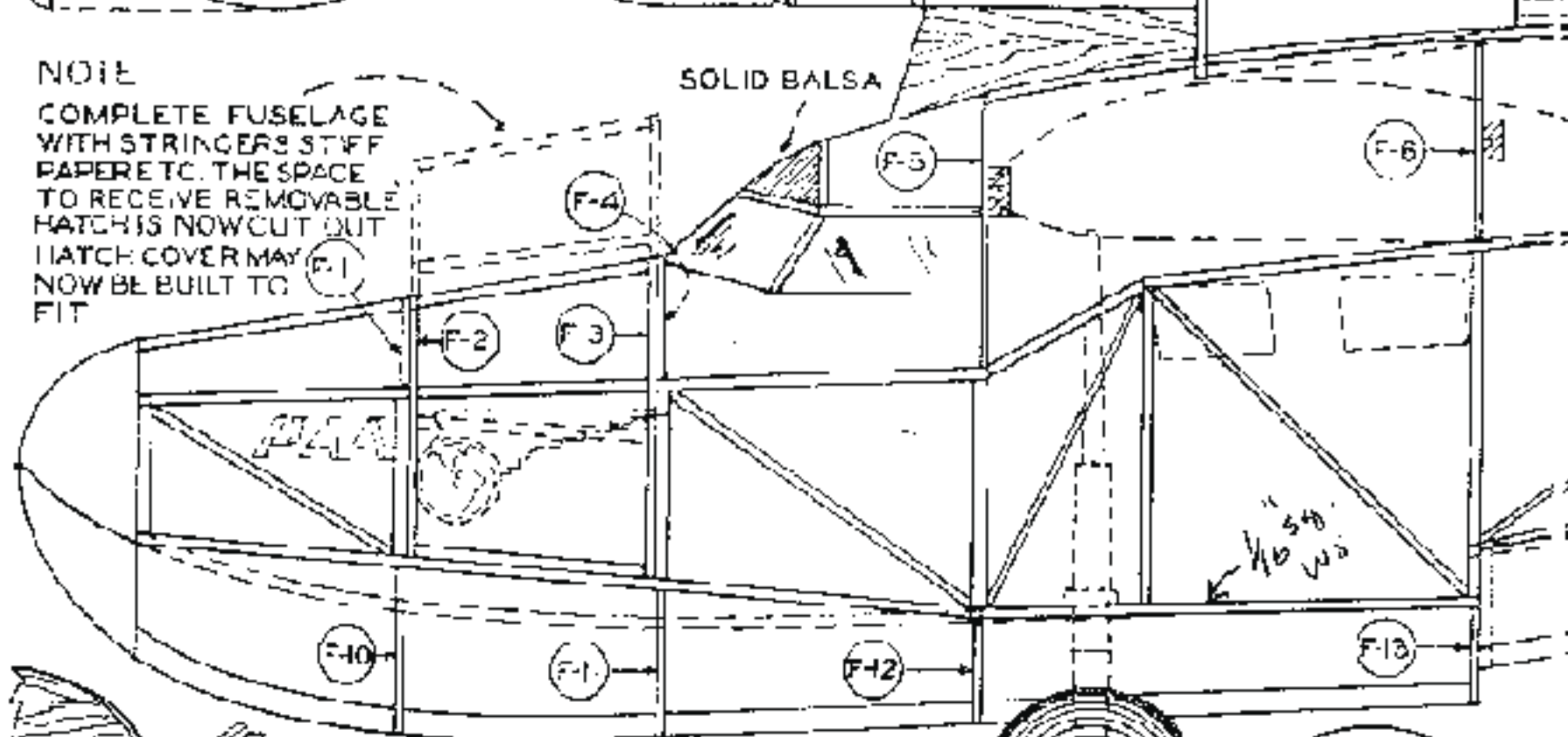
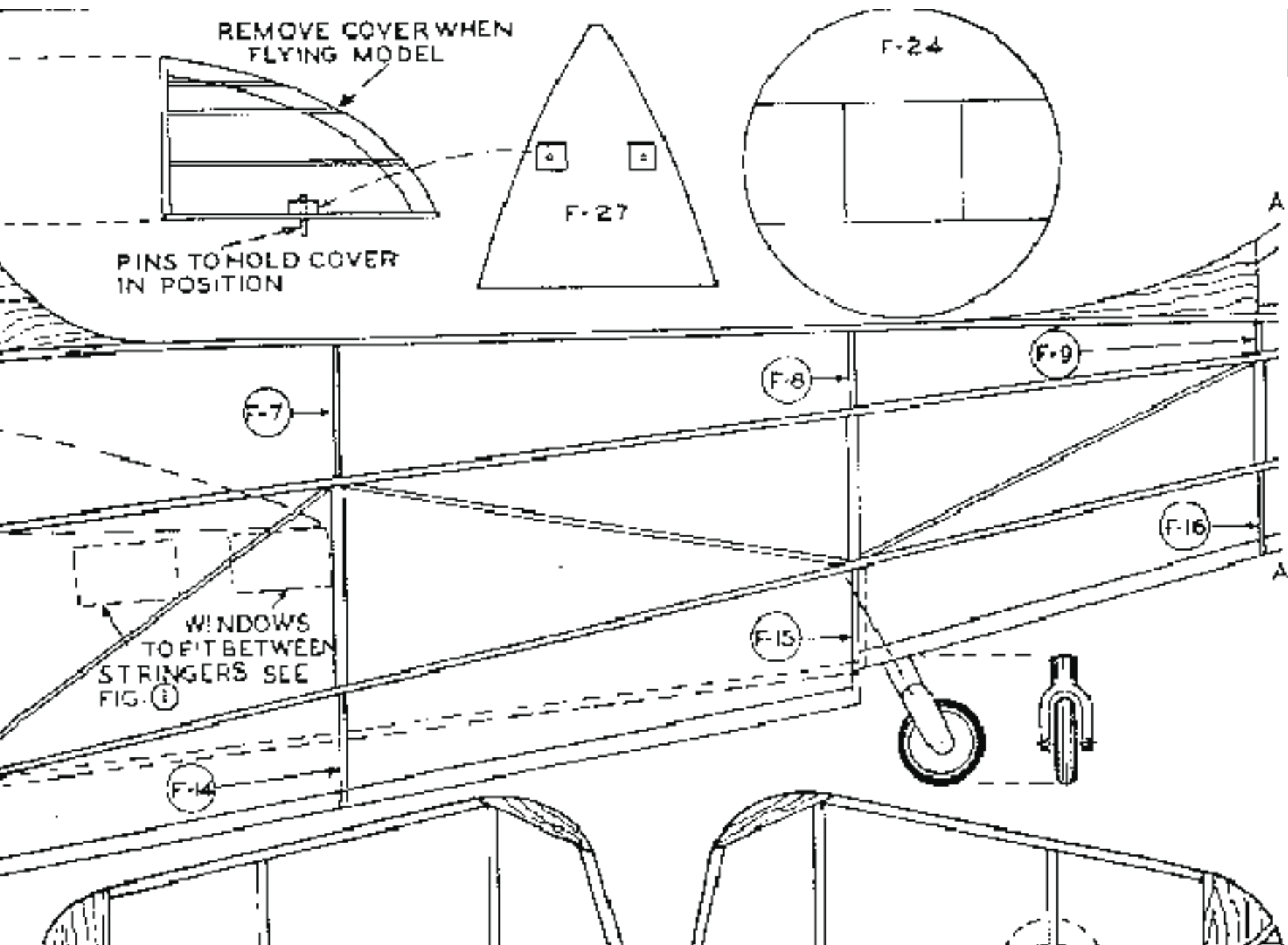


NOTE

COMPLETE FUSELAGE
WITH STRINGERS STIFF
PAPER ETC. THE SPACE
TO RECEIVE REMOVABLE
HATCH IS NOW CUT OUT
HATCH COVER MAY
NOW BE BUILT TO
FIT

SOLID BALSA





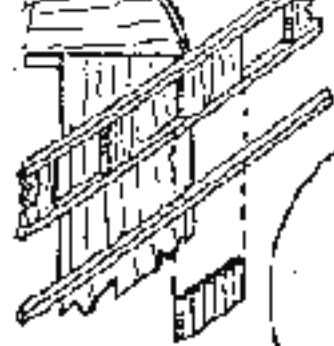
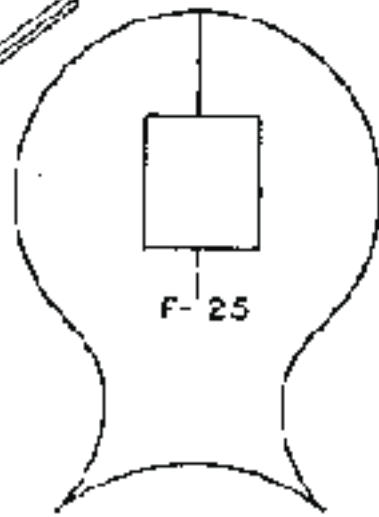
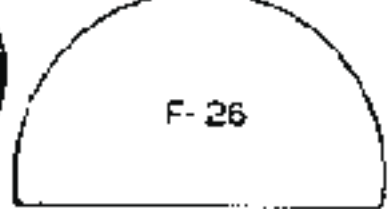


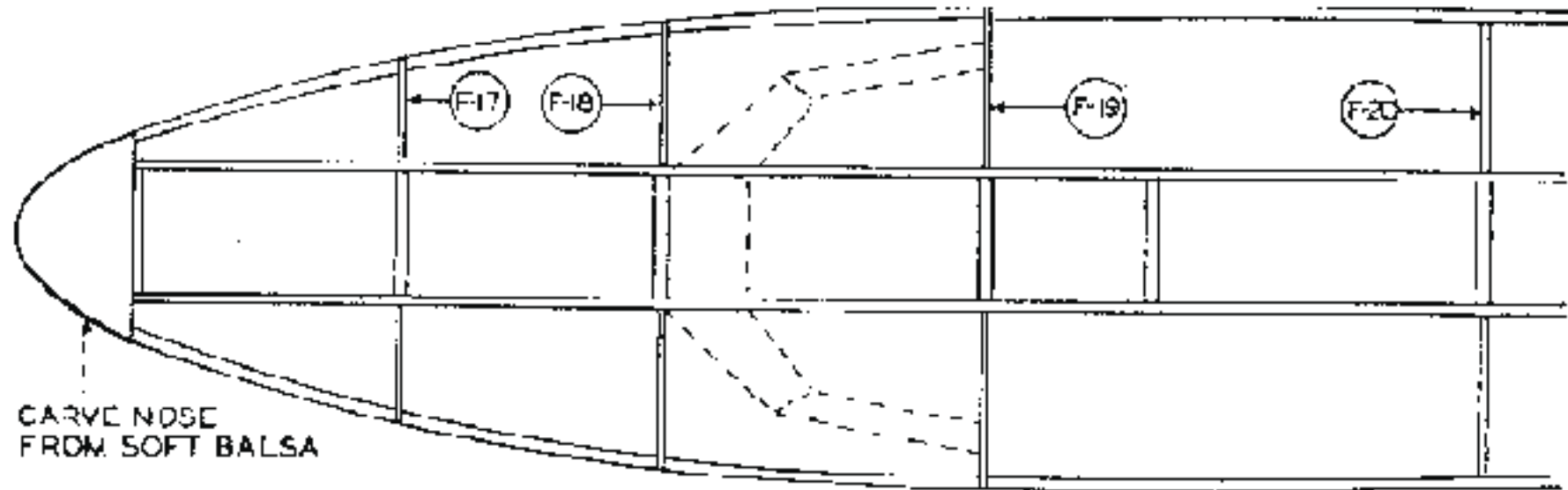
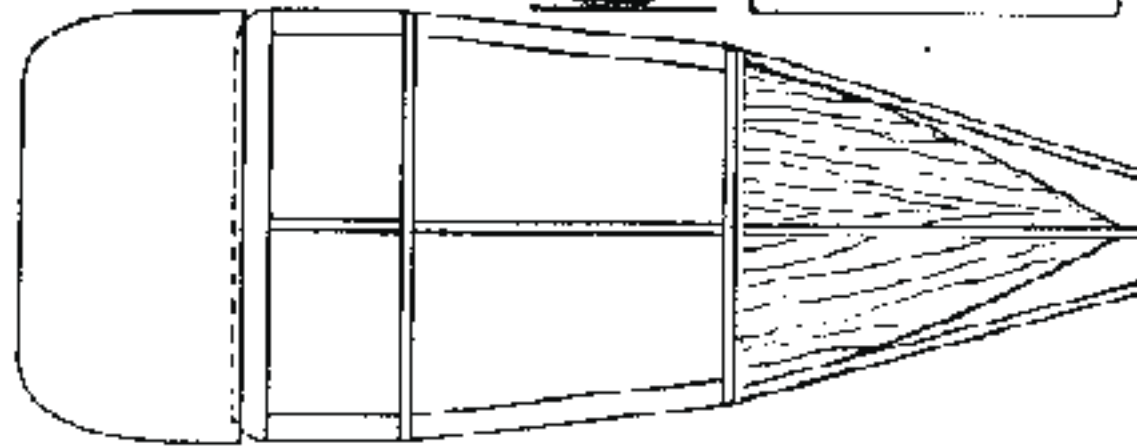
FIG. 1

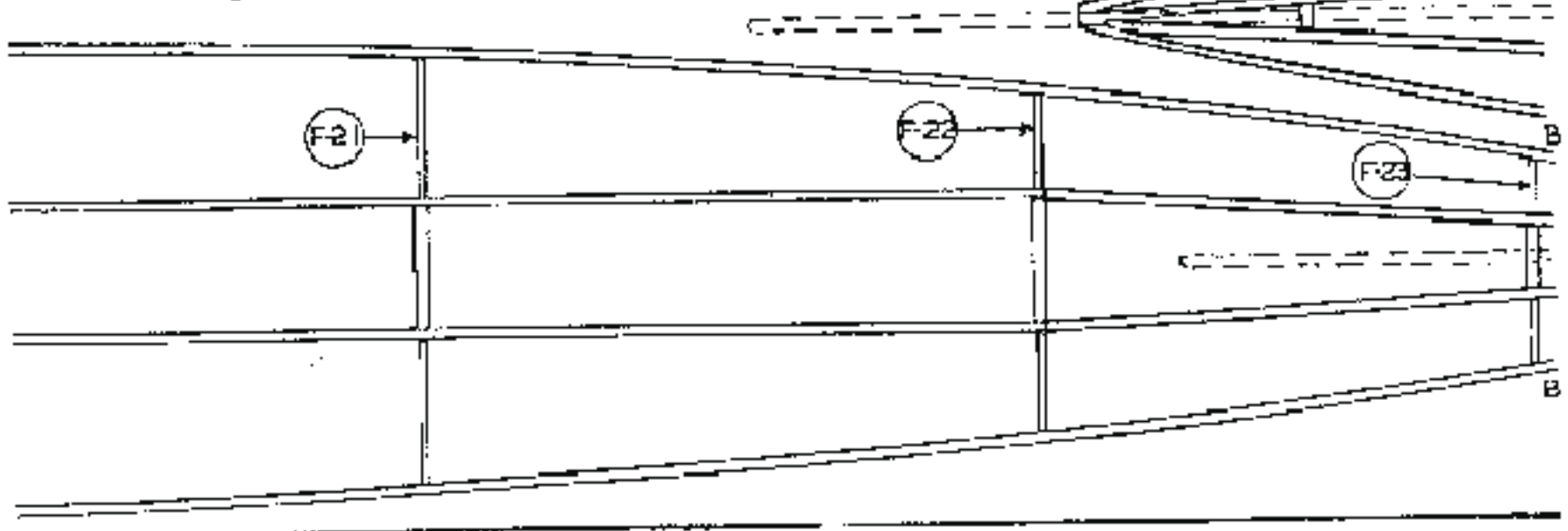
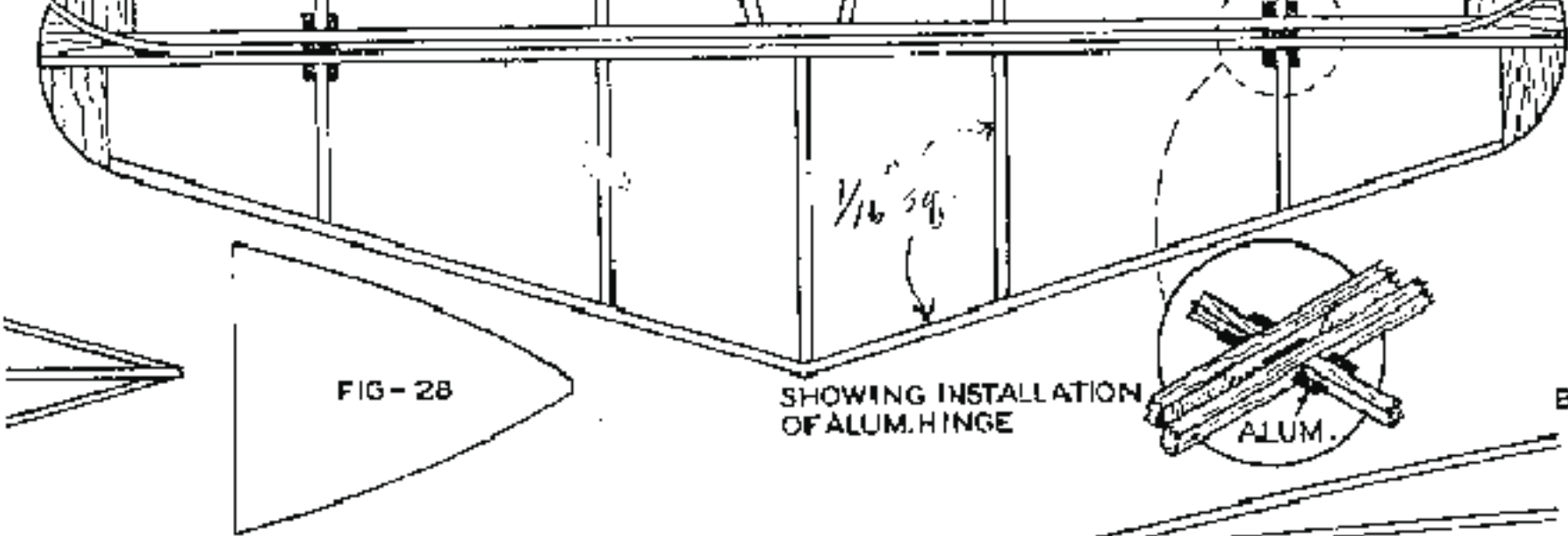


F-25



F-26

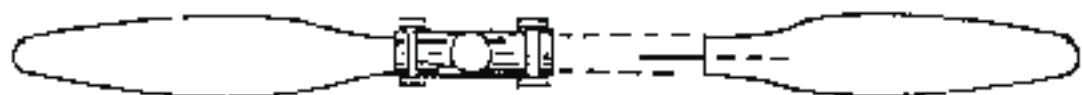




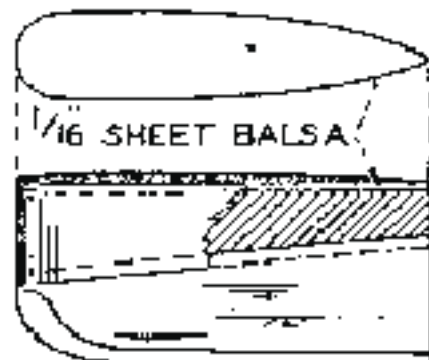
SCALE PROP

PIN

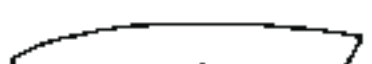
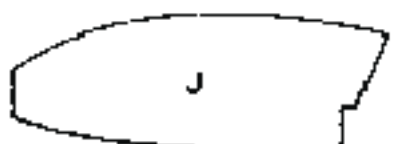
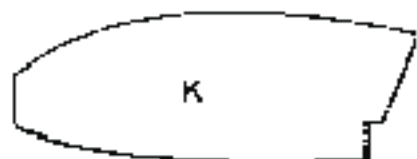
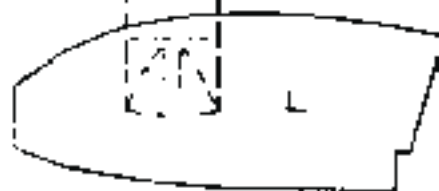
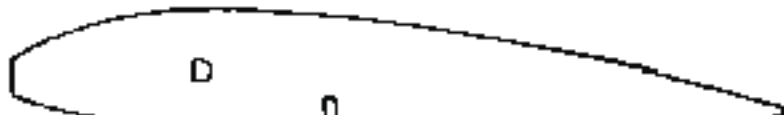
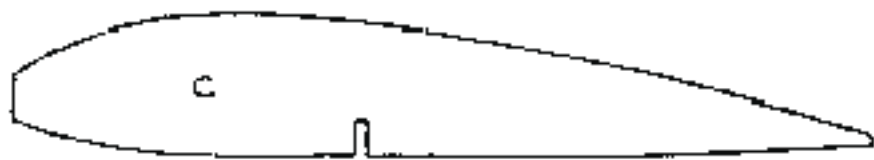
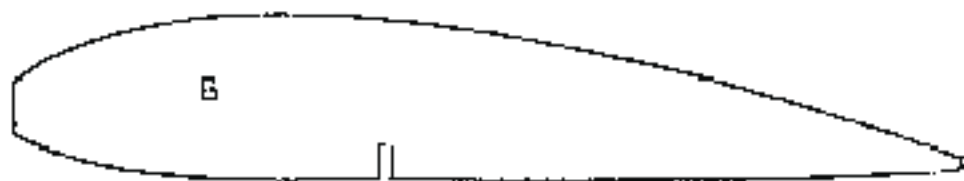
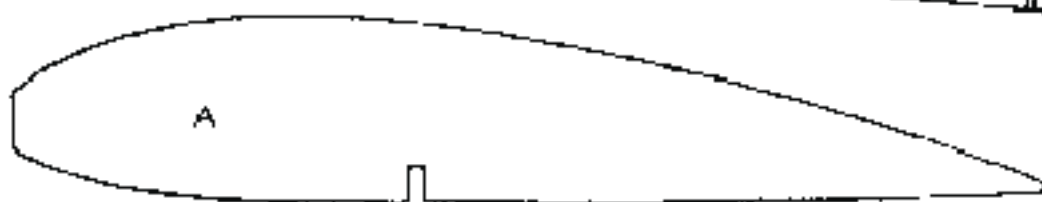
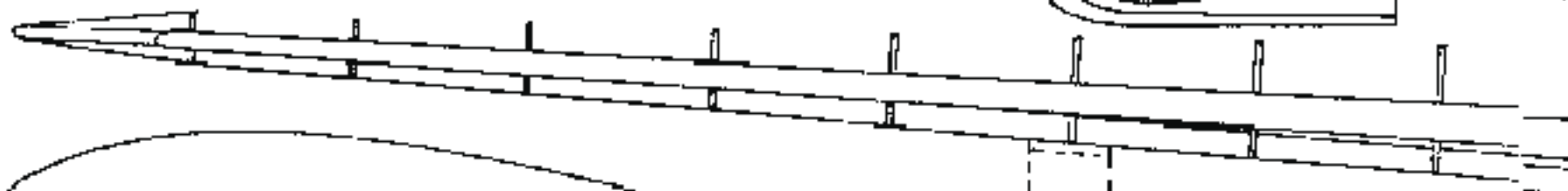
CONSTRUCTION OF WING FLOAT



NOTE
BUILD SCALE PROP
IN SEPERATE PIECES
AS SHOWN

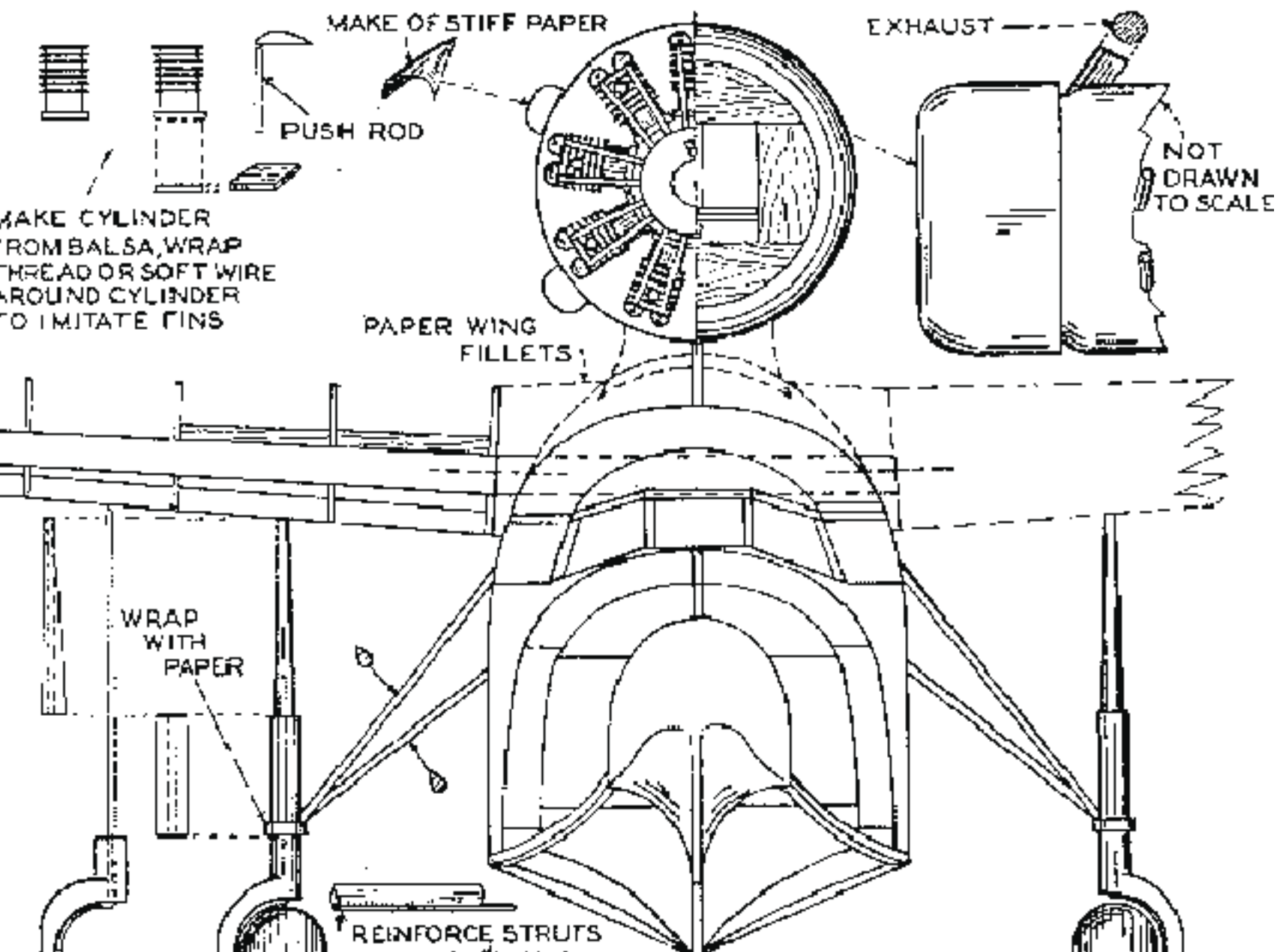


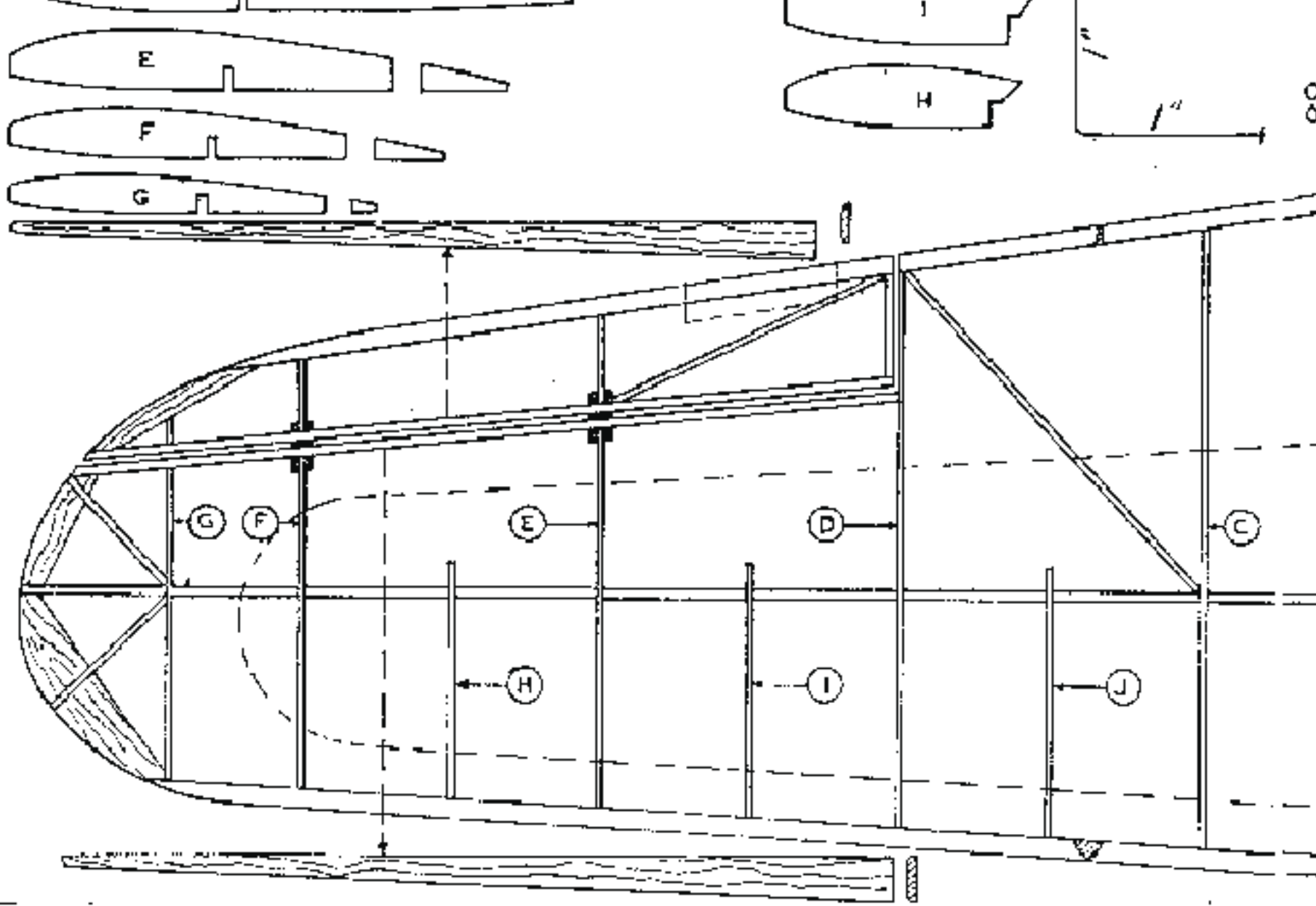
STIFF PAPER



All ribs:
1/32" sheet
balsa

N
F
T
A
T





WITH .026 PIANO

ONE PIECE AXLE
026 PIAN

