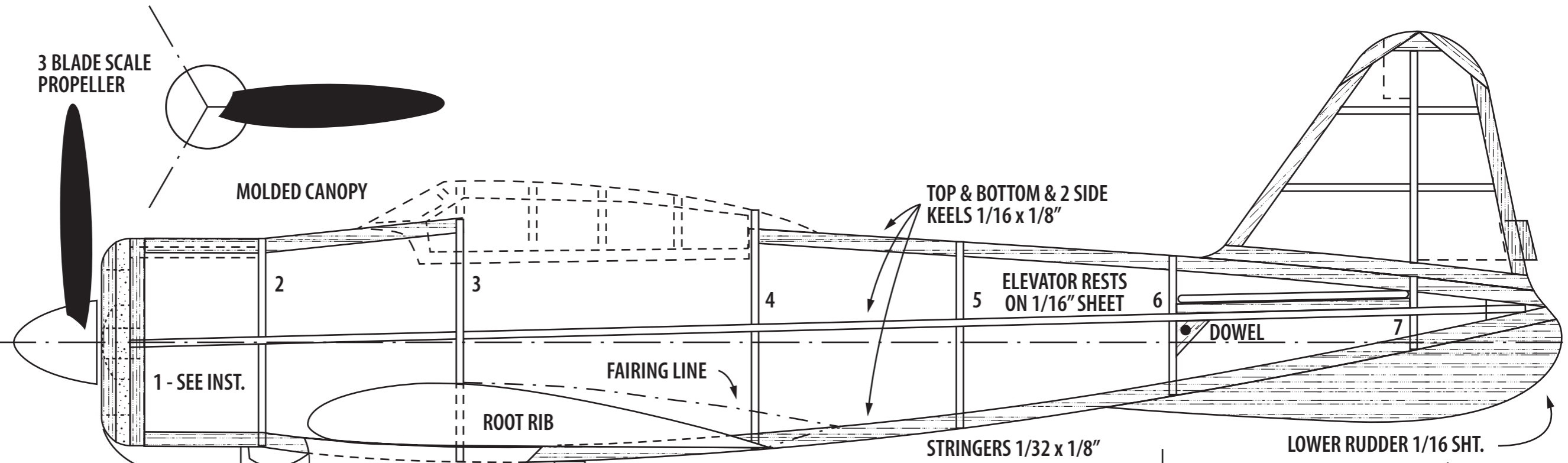


Mitsubishi S-00
 also know as
 Nakajima A6M2-N (RUFE)
 by Joseph H. Wherry

Published in Model
 Airplane News – July 1948,
 redrawn in 2019.

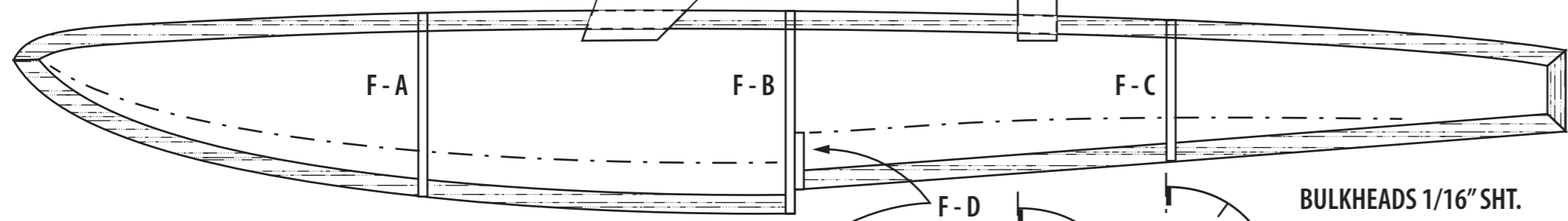
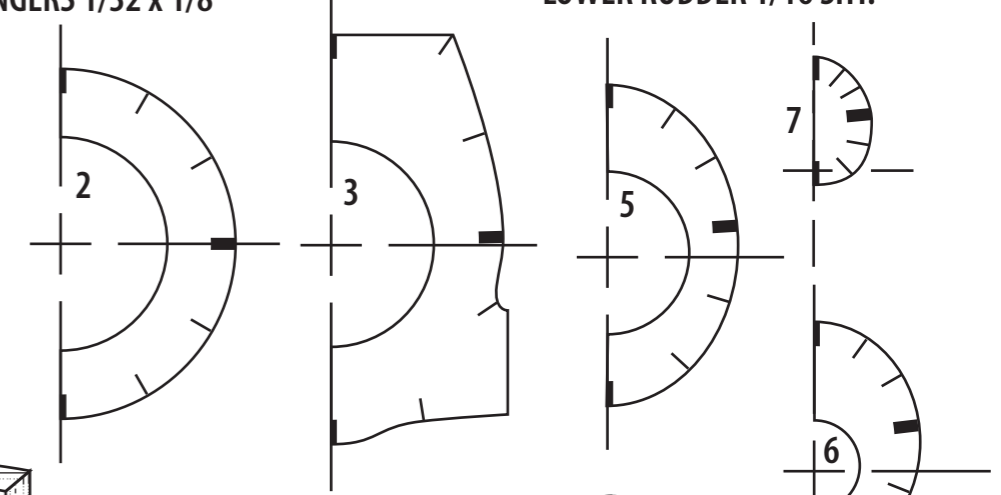
Page 1 of 2
 (fits in A3 size paper)

Metric conversion
 1/32" - 0.8mm
 1/16" - 1.6mm
 1/8" - 3.2mm
 1/4" - 6.3mm

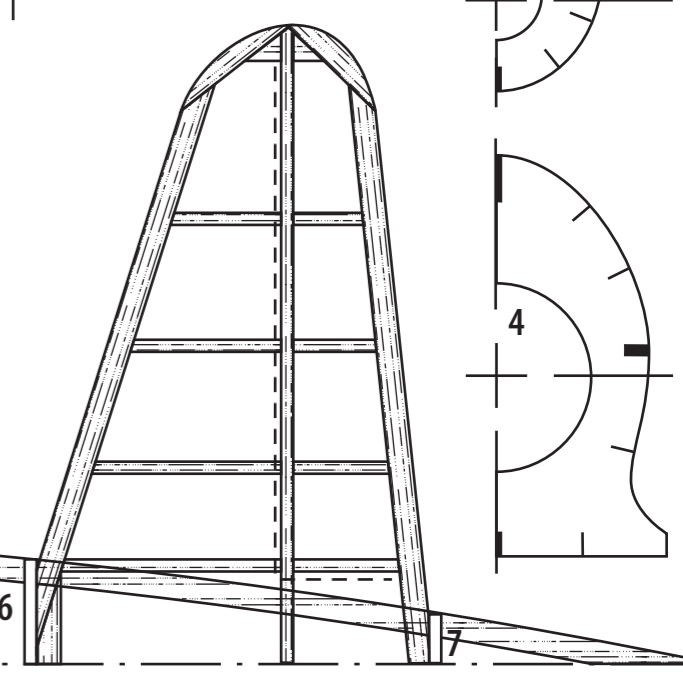
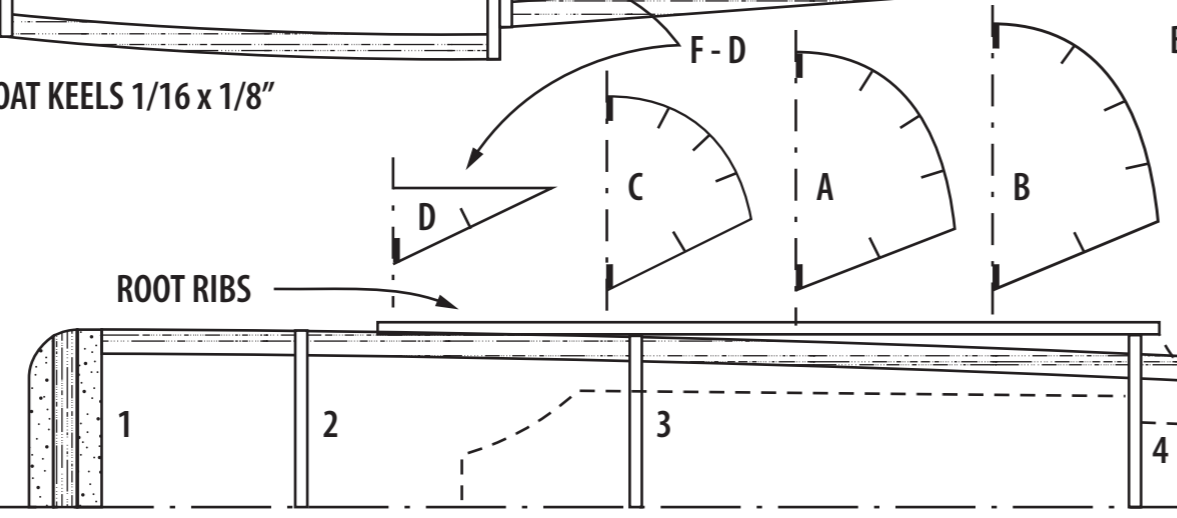


MAIN FLOAT, SEE INST.

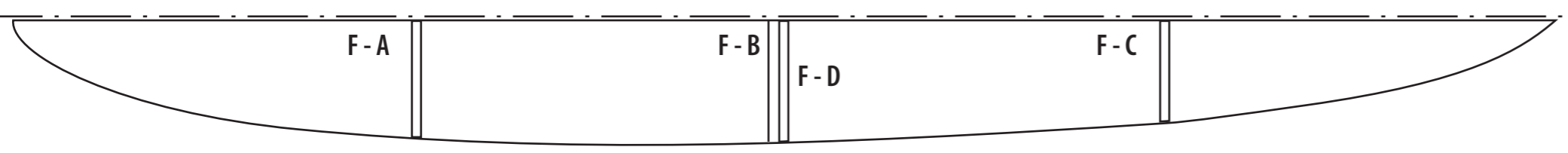
ACCURATE SCALE:
 Shorten the distance between the bottom of fuselage and top of float to 1-1/4" (or 32mm). The same for the sponson struts. Use a 3-blade propeller and a spinner.

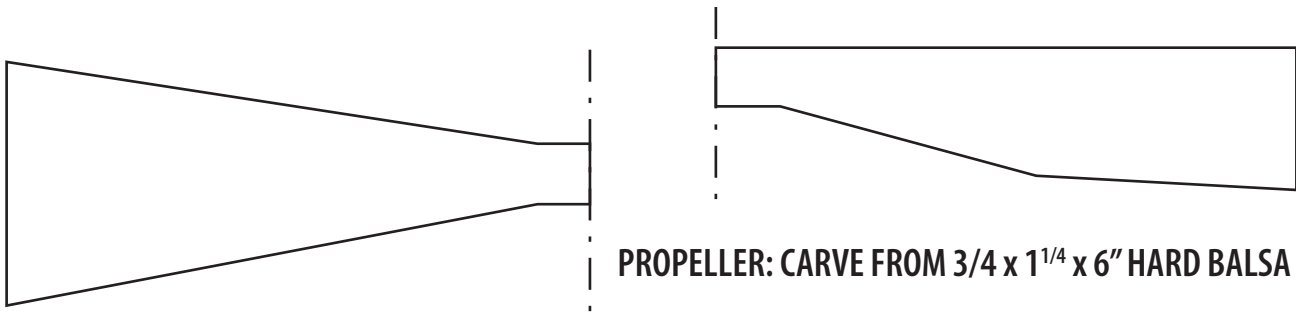


TOP & BOTTOM FLOAT KEELS 1/16 x 1/8"

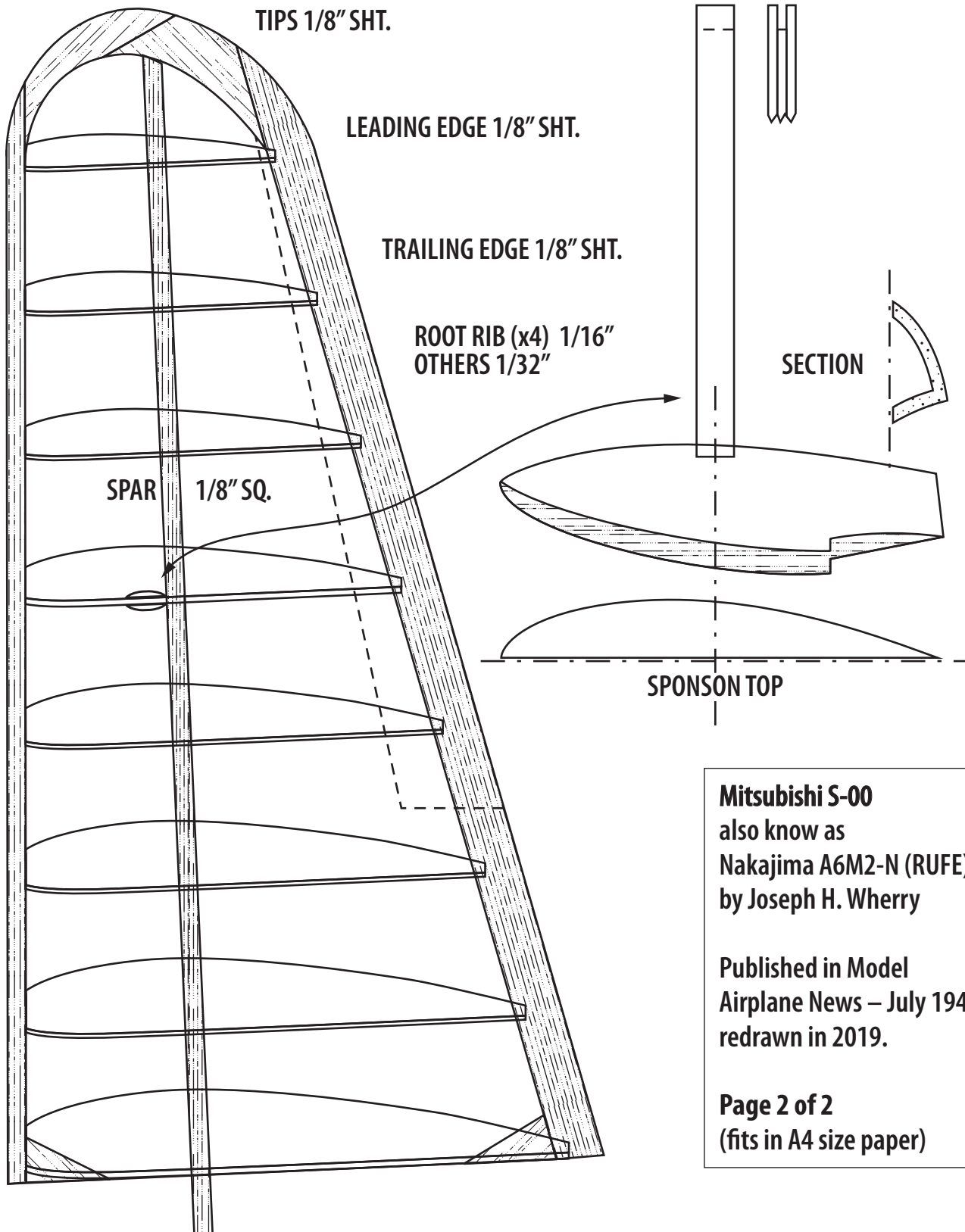


LEFT 1/2 TOP OF FLOAT





PROPELLER: CARVE FROM 3/4 x 1^{1/4} x 6" HARD BALSA



TIPS 1/8" SHT.

LEADING EDGE 1/8" SHT.

TRAILING EDGE 1/8" SHT.

ROOT RIB (x4) 1/16"
OTHERS 1/32"

SPAR 1/8" SQ.

SECTION

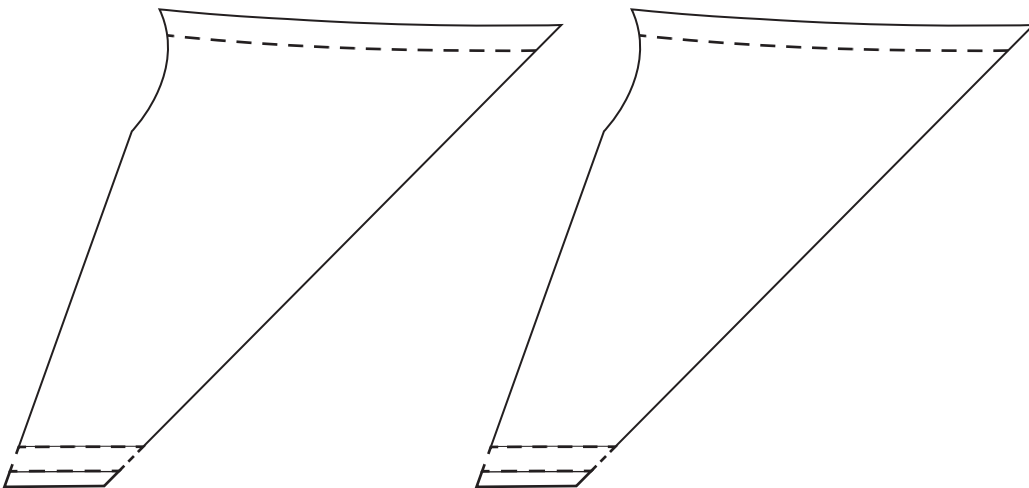
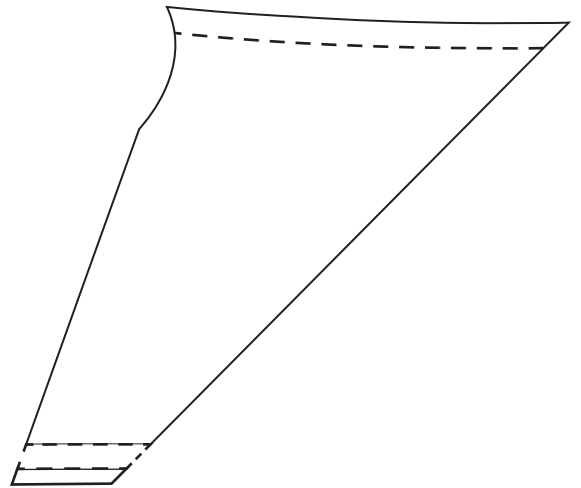
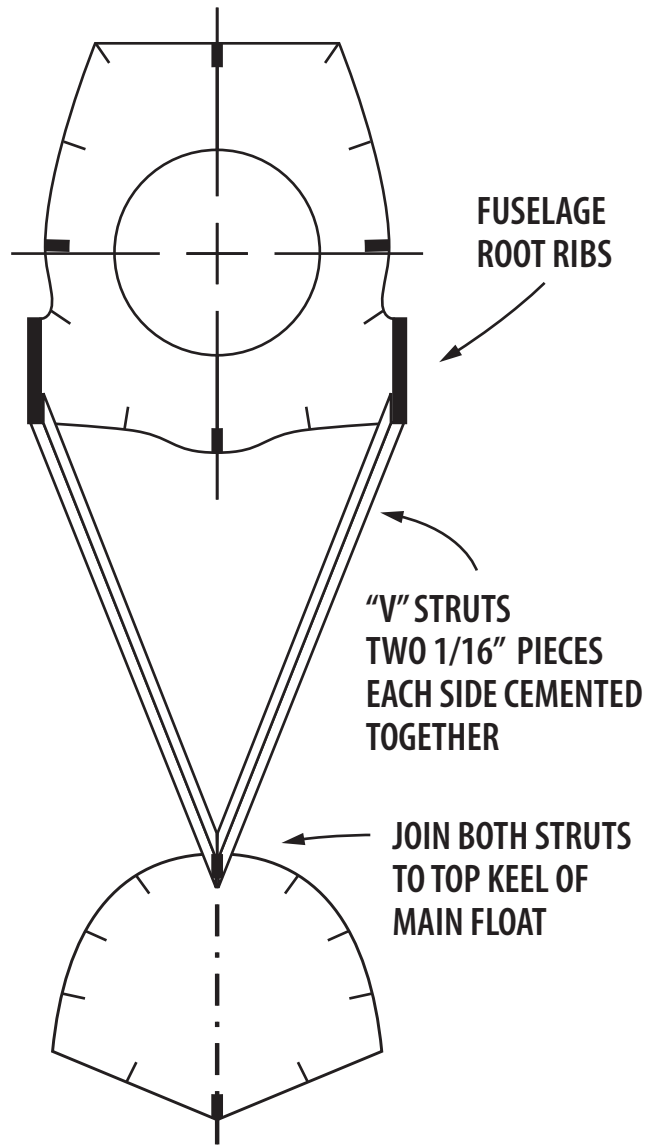
SPONSON TOP

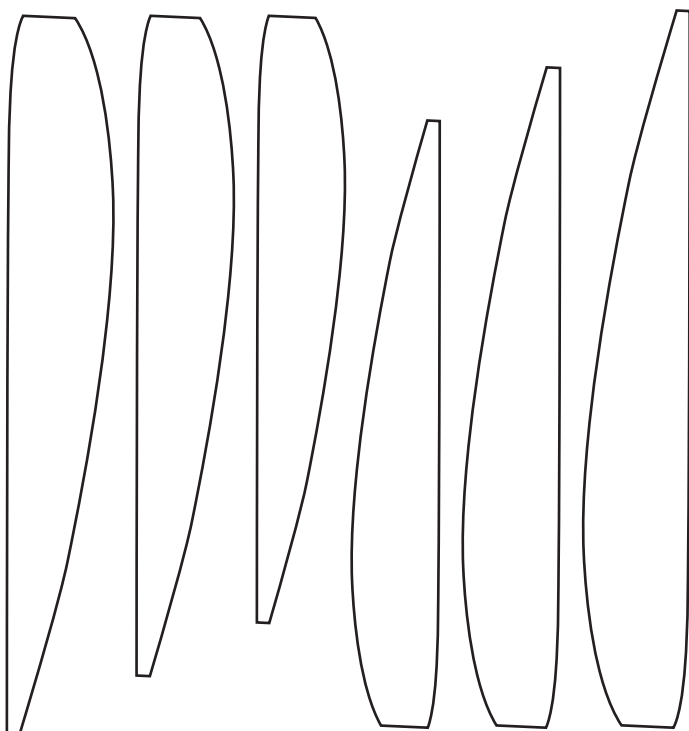
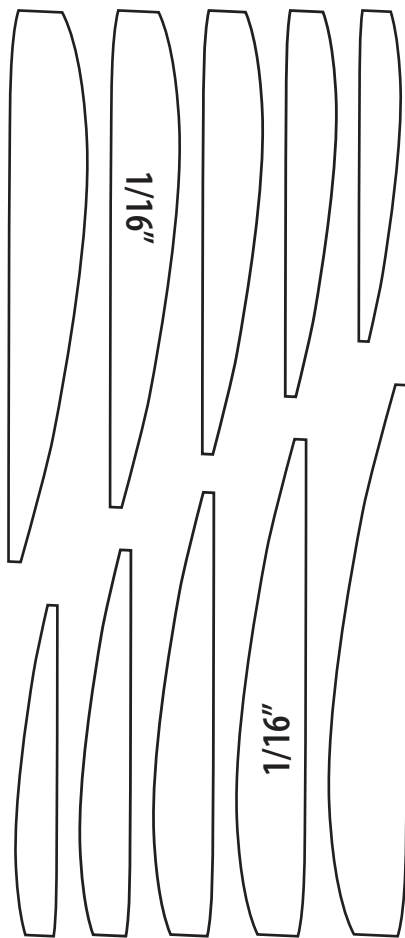
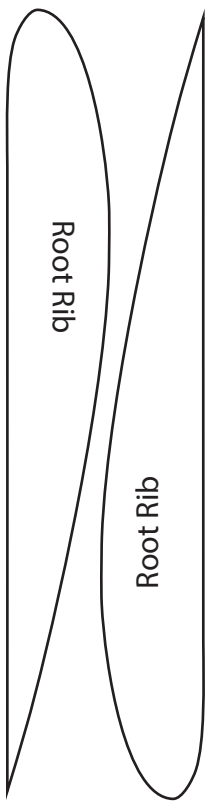
Mitsubishi S-00
also know as
Nakajima A6M2-N (RUFÉ)
by Joseph H. Wherry

Published in Model
Airplane News – July 1948,
redrawn in 2019.

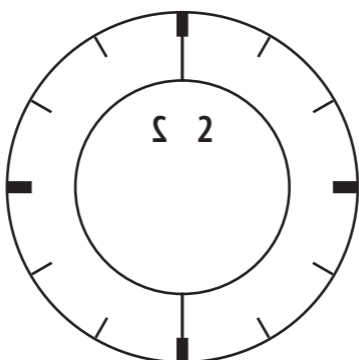
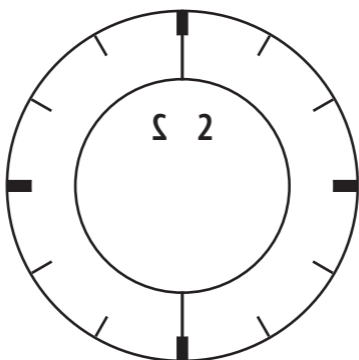
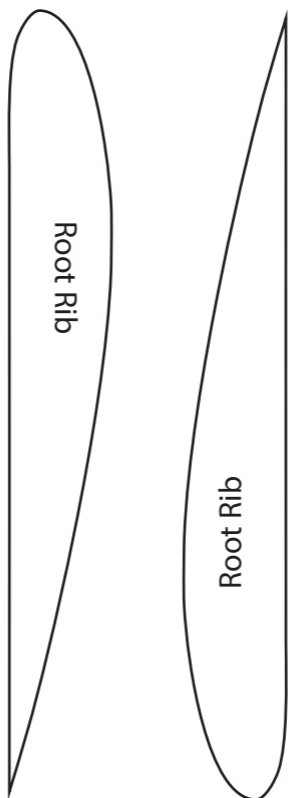
Page 2 of 2
(fits in A4 size paper)

Auxiliary drawings,
not included in the
original version.

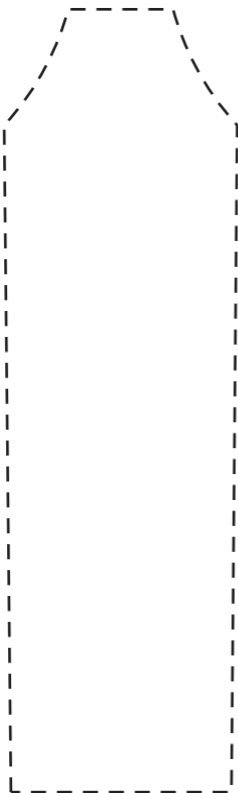
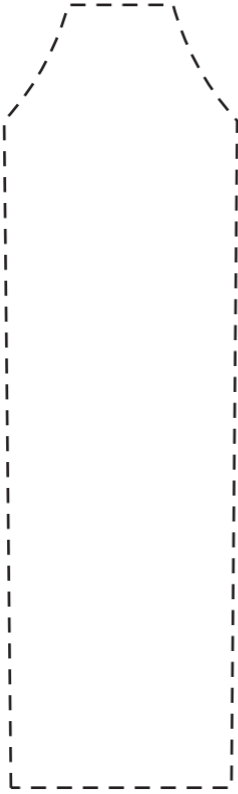




**Auxiliary drawings,
not included in the
original version.**



**Auxiliary drawings,
not included in the
original version.**



**Auxiliary drawings,
not included in the
original version.**