

# Canadair CL - 415

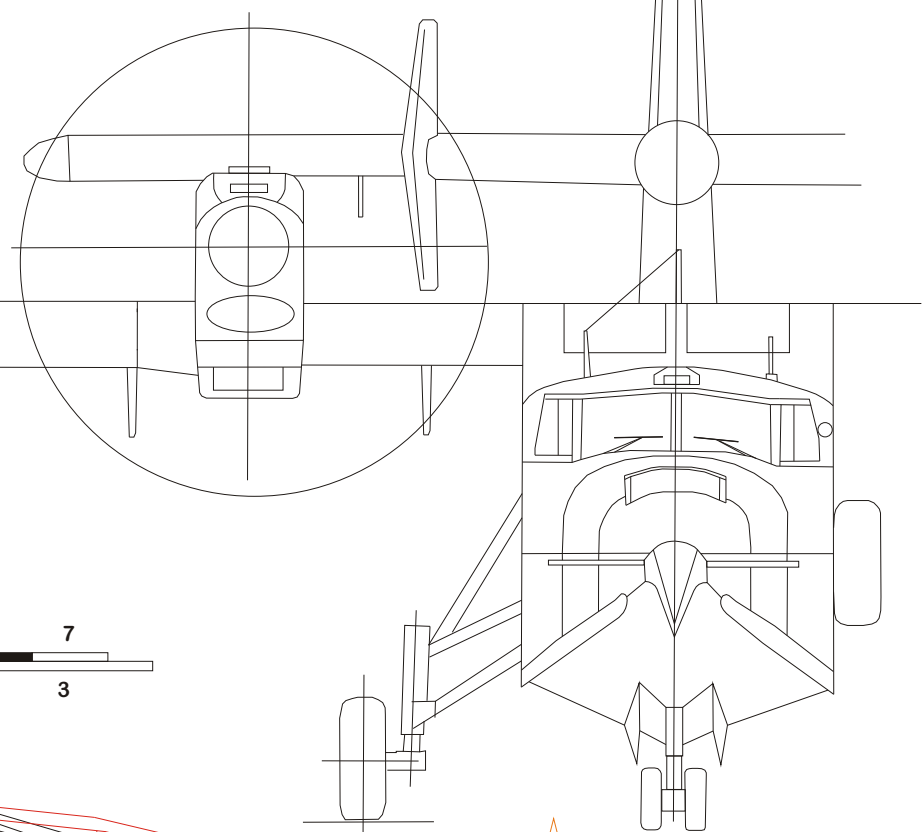
Span with 44.5cm (17.5")

Planversion 1.0

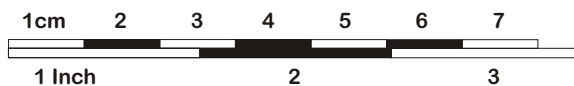
Jan 2011

R.Gröner

## Sheet 1/2



Scale reference for printing



3 (1x)

4 (1x)

2 (1x)

5 (3x)

1 (1x)

Sand to fit into the paper tube in the fuselage

Magnets to hold wing in Position

Rudder / fuselage Assembly

Front / back view

Nose is removable for multiple trimm settings.

Dowel to attach clay

Front landing gear

Laminate two 0.6mm cross grain layers

Stab / rudder Assembly

Incidence 3 degrees

Vertical Grain direction

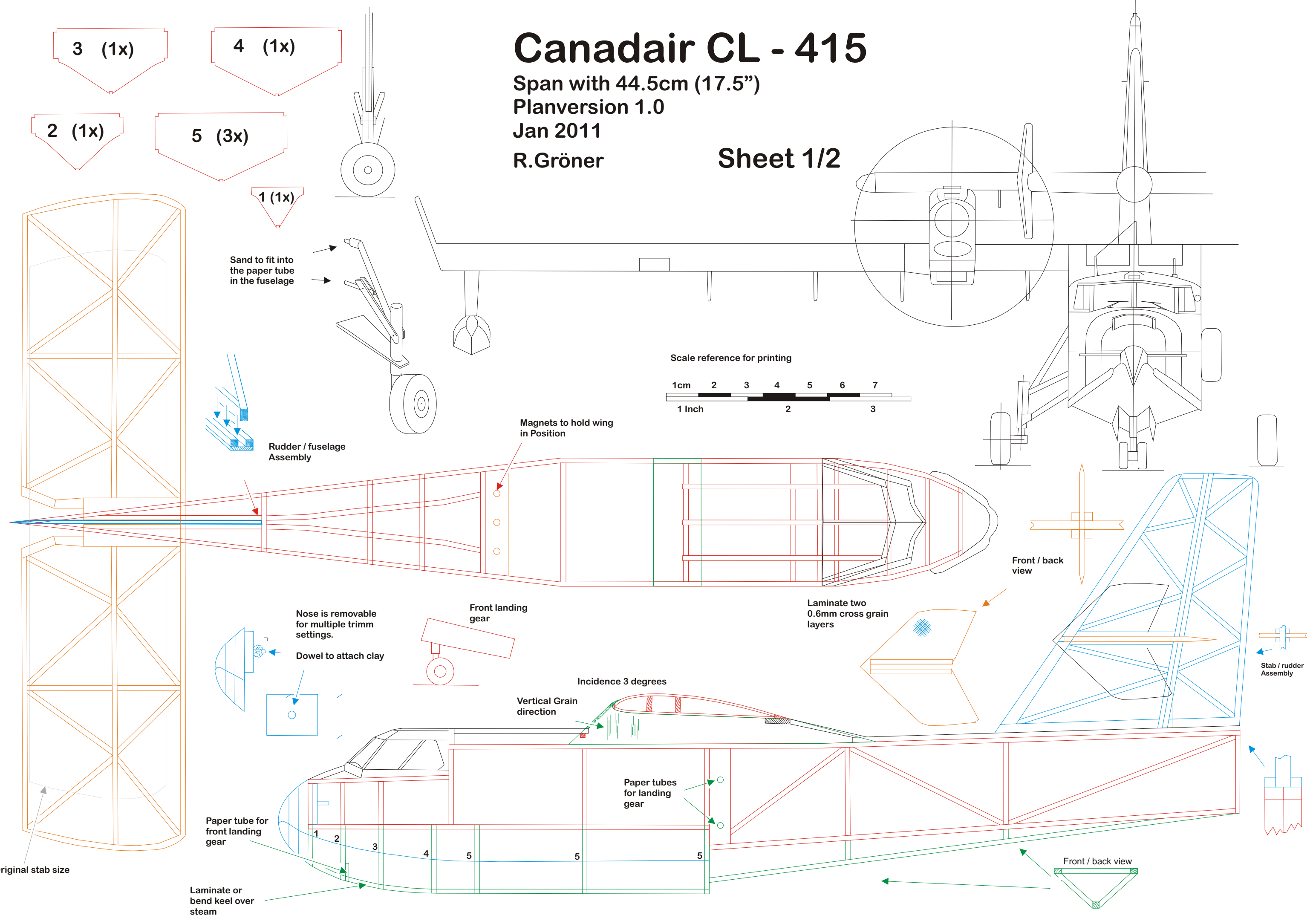
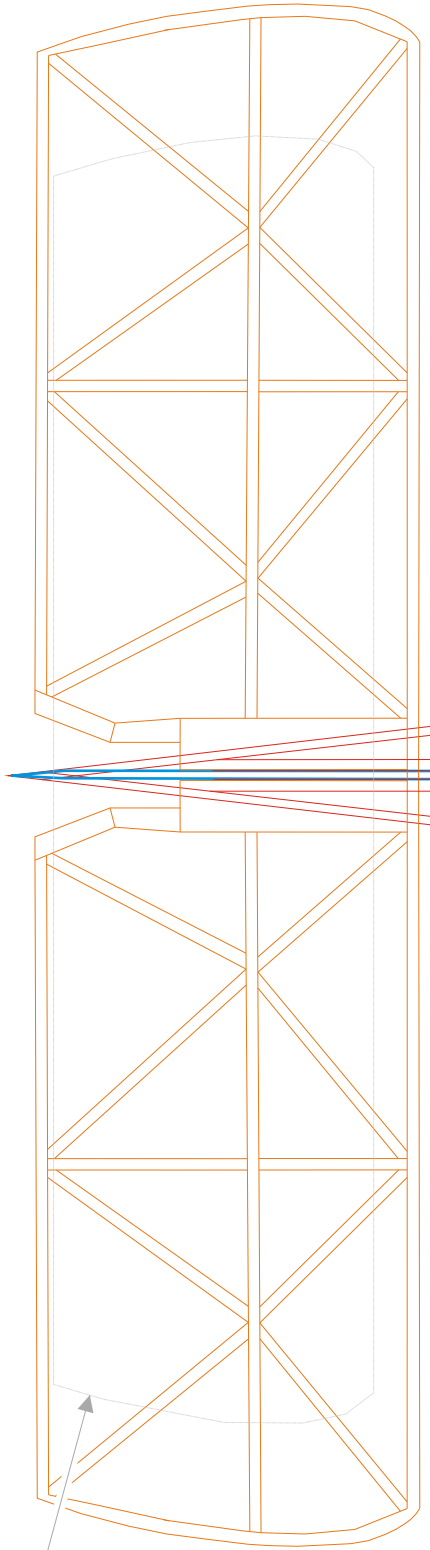
Paper tubes for landing gear

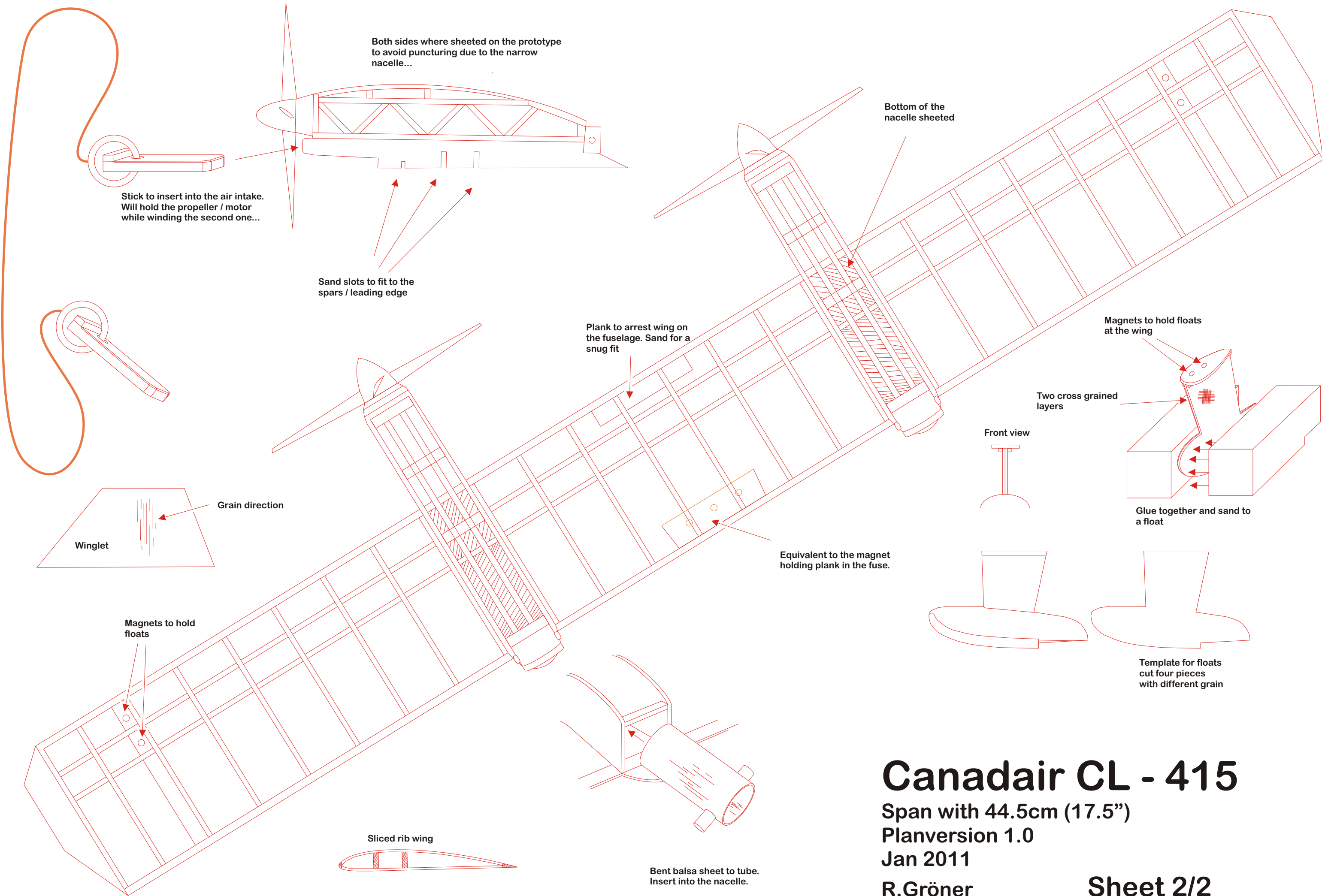
Paper tube for front landing gear

Front / back view

Laminate or bend keel over steam

Original stab size





Both sides where sheeted on the prototype to avoid puncturing due to the narrow nacelle...

Stick to insert into the air intake. Will hold the propeller / motor while winding the second one...

Sand slots to fit to the spars / leading edge

Plank to arrest wing on the fuselage. Sand for a snug fit

Bottom of the nacelle sheeted

Magnets to hold floats at the wing

Two cross grained layers

Front view

Glue together and sand to a float

Equivalent to the magnet holding plank in the fuse.

Magnets to hold floats

Grain direction

Winglet

Template for floats cut four pieces with different grain

Sliced rib wing

Bent balsa sheet to tube. Insert into the nacelle.

# Canadair CL - 415

Span with 44.5cm (17.5")

Planversion 1.0

Jan 2011

R.Gröner

Sheet 2/2