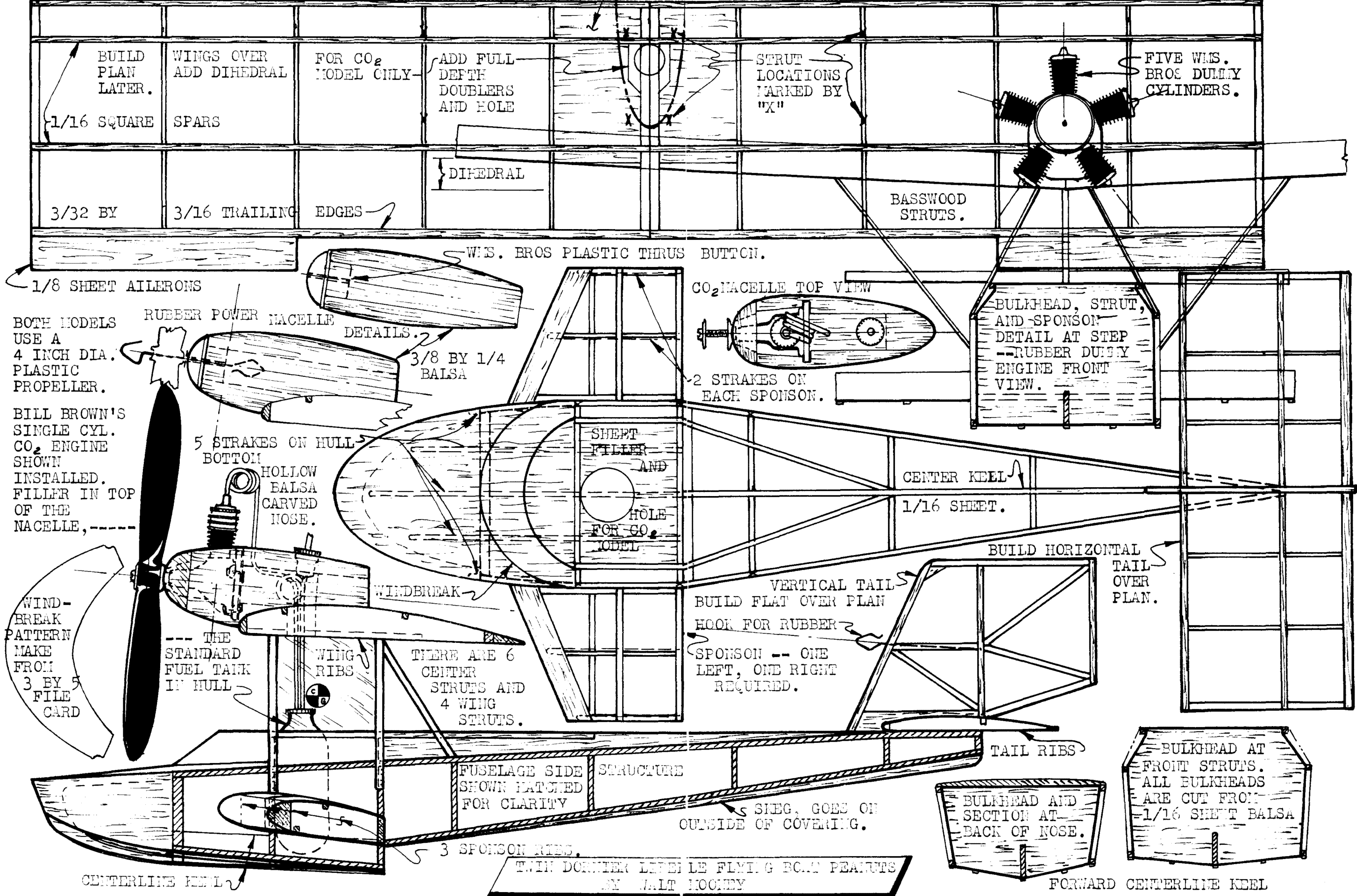


1/16 BY 1/4 LEADING EDGES 1/32 SHEET FILLER BETWEEN ROOT RIBS ON BOTTOM OF WING PANELS. ROOT AND TIP RIBS ARE 3/32 SHEET.



BUILD PLAN LATER.

WINGS OVER ADD DIHEDRAL SPARS

FOR CO₂ MODEL ONLY

ADD FULL DEPTH DOUBLERS AND HOLE

STRUT LOCATIONS MARKED BY "X"

FIVE WIS. BROE DUMMY CYLINDERS.

1/16 SQUARE

DIHEDRAL

3/32 BY

3/16 TRAILING EDGES

BASSWOOD STRUTS.

WIS. BROE PLASTIC THRU BUTTON.

1/8 SHEET AILERONS

CO₂ NACELLE TOP VIEW

BOTH MODELS USE A 4 INCH DIA. PLASTIC PROPELLER.

RUBBER POWER NACELLE

DETAILS

3/8 BY 1/4 Balsa

BULKHEAD, STRUT, AND SPONSON DETAIL AT STEP -- RUBBER DUMMY ENGINE FRONT VIEW.

BILL BROWN'S SINGLE CYL. CO₂ ENGINE SHOWN INSTALLED. FILLER IN TOP OF THE NACELLE, ---

5 STRAKES ON HULL BOTTOM

HOLLOW Balsa CARVED NOSE.

SHEET FILLER AND

HOLE FOR CO₂ MODEL

CENTER KEEL

1/16 SHEET.

WIND-BREAK PATTERN MAKE FROM 3 BY 5 FILE CARD

--- THE STANDARD FUEL TANK IN HULL

WING RIBS

THERE ARE 6 CENTER STRUTS AND 4 WING STRUTS.

VERTICAL TAIL BUILD FLAT OVER PLAN HOOK FOR RUBBER

SPONSON -- ONE LEFT, ONE RIGHT REQUIRED.

BUILD HORIZONTAL TAIL OVER PLAN.

TAIL RIBS

FUSELAGE SIDE STRUCTURE SHOWN HATCHED FOR CLARITY

SNEG. GOES ON OUTSIDE OF COVERING.

BULKHEAD AND SECTION AT BACK OF NOSE.

BULKHEAD AT FRONT STRUTS. ALL BULKHEADS ARE CUT FROM 1/16 SHEET Balsa

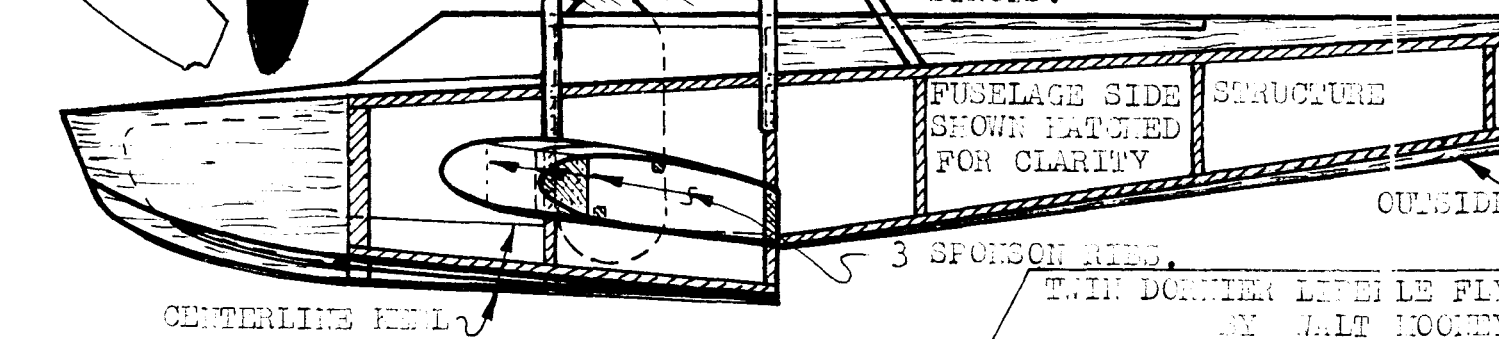
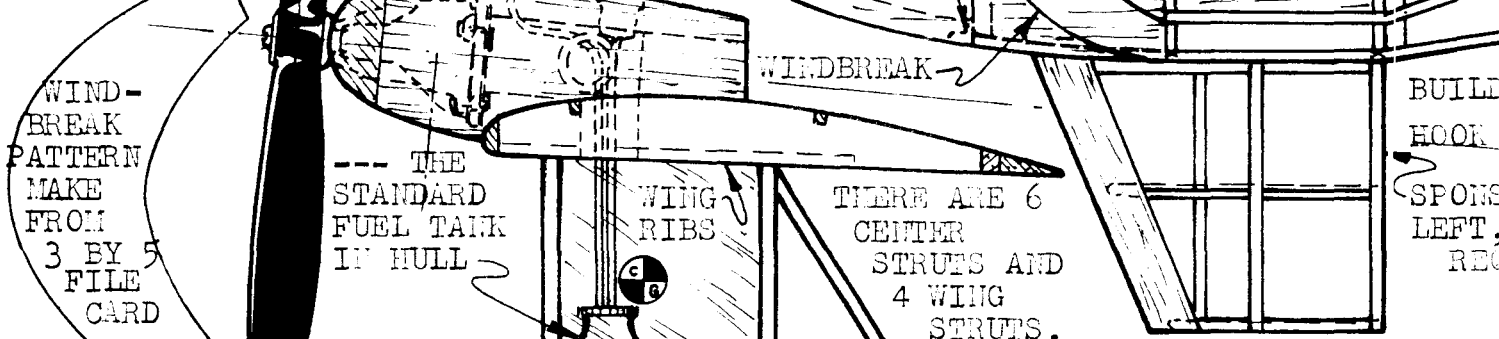
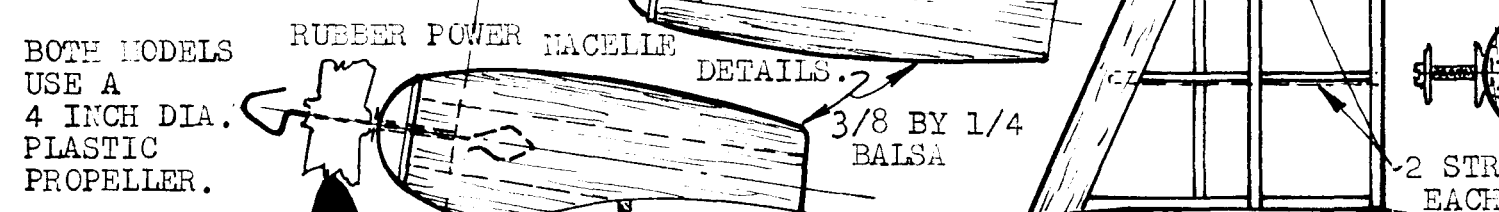
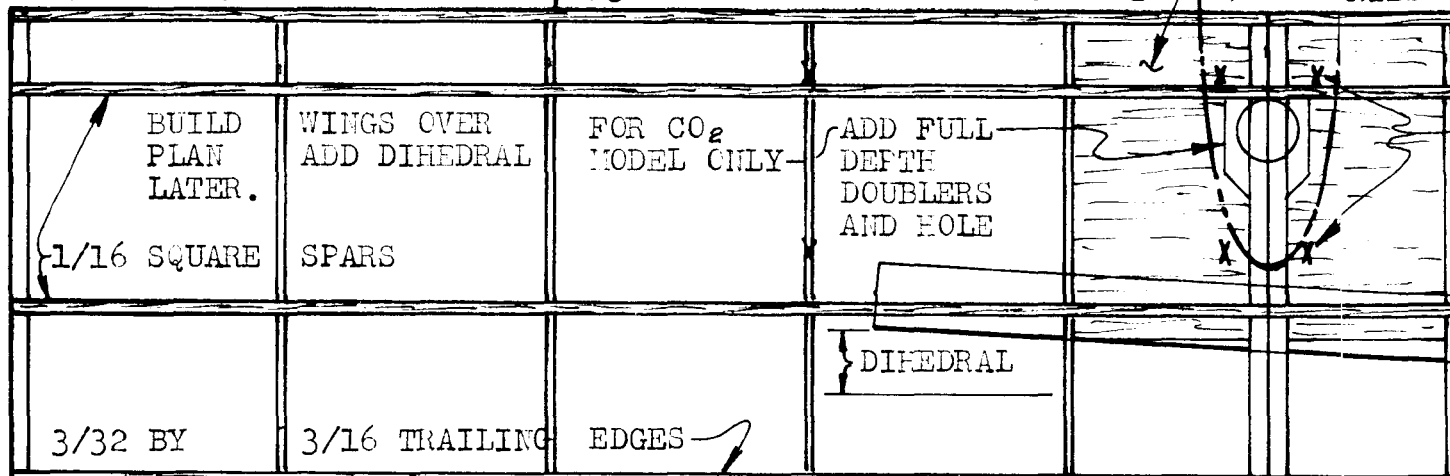
CENTERLINE KEEL

3 SPONSON RIBS.

TWIN DORNIER LEVEL FLYING BOAT PEANUTS BY WALT HOONEY

FORWARD CENTERLINE KEEL

1/16 BY 1/4 LEADING EDGES 1/32 SHEET FILLER BETWEEN ROOT RIBS



TWIN DORNIER LEFEL LE FLY BY WALT HOEY

RIBS ON BOTTOM OF WING PANELS. ROOT AND TIP RIBS ARE 3/32 SHEET.

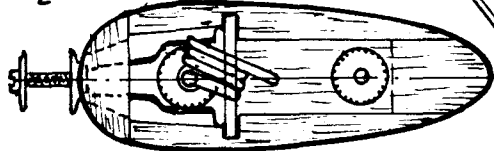
STRUT LOCATIONS MARKED BY "X"

FIVE WMS. BRO'S DUMBY CYLINDERS.

BASSWOOD STRUTS.

RUS BUTTN.

CO₂ NACELLE TOP VIEW



2 STRAKES ON EACH SPONSON.

BULKHEAD, STRUT, AND SPONSON DETAIL AT STEP -- RUBBER DUMBY ENGINE FRONT VIEW.

CENTER KEEL

1/16 SHEET.

BUILD HORIZONTAL TAIL OVER PLAN.

VERTICAL TAIL BUILD FLAT OVER PLAN HOOR FOR RUBBER

SPONSON -- ONE LEFT, ONE RIGHT REQUIRED.

TAIL RIBS

SIEG. GOES ON OUTSIDE OF COVERING.

BULKHEAD AND SECTION AT BACK OF NOSE.

BULKHEAD AT FRONT STRUTS. ALL BULKHEADS ARE CUT FROM 1/16 SHEET Balsa

LE FLYING BOAT PEANUTS LT HOCHNY

FORWARD CENTERLINE KEEL