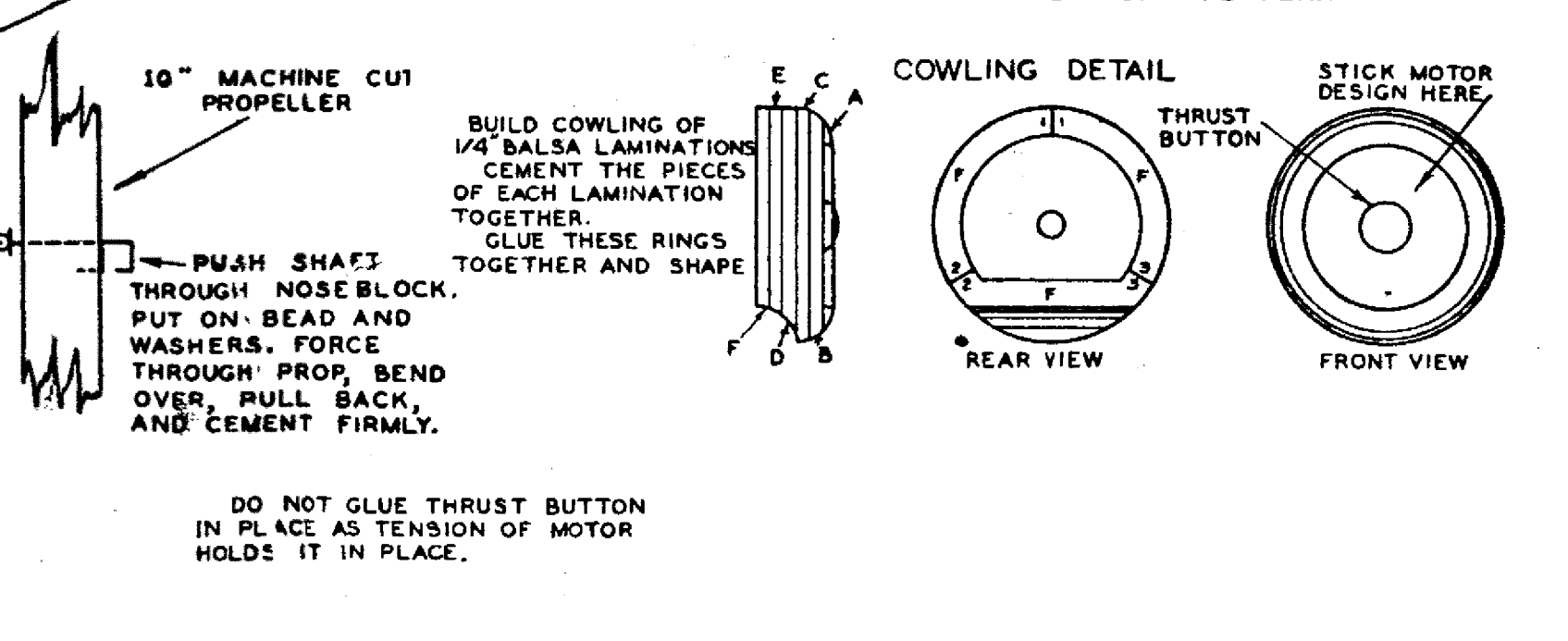
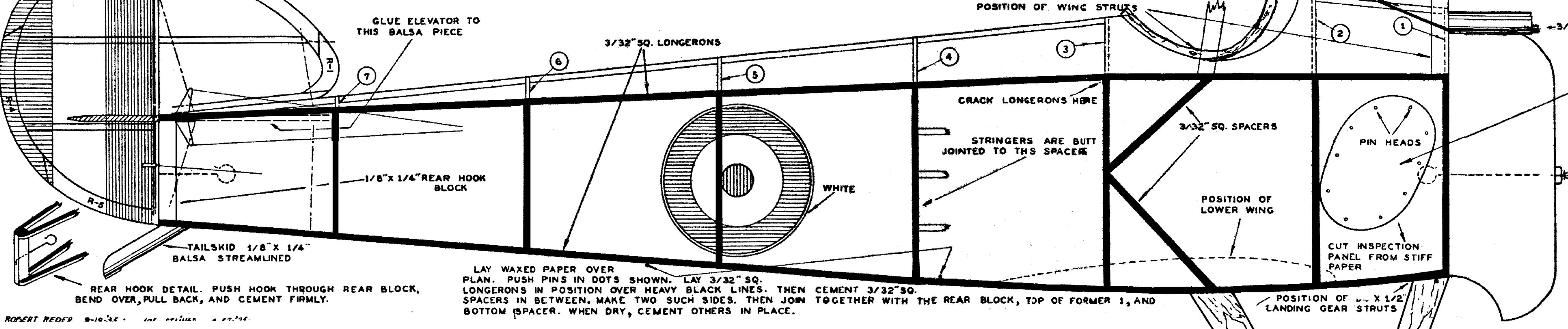
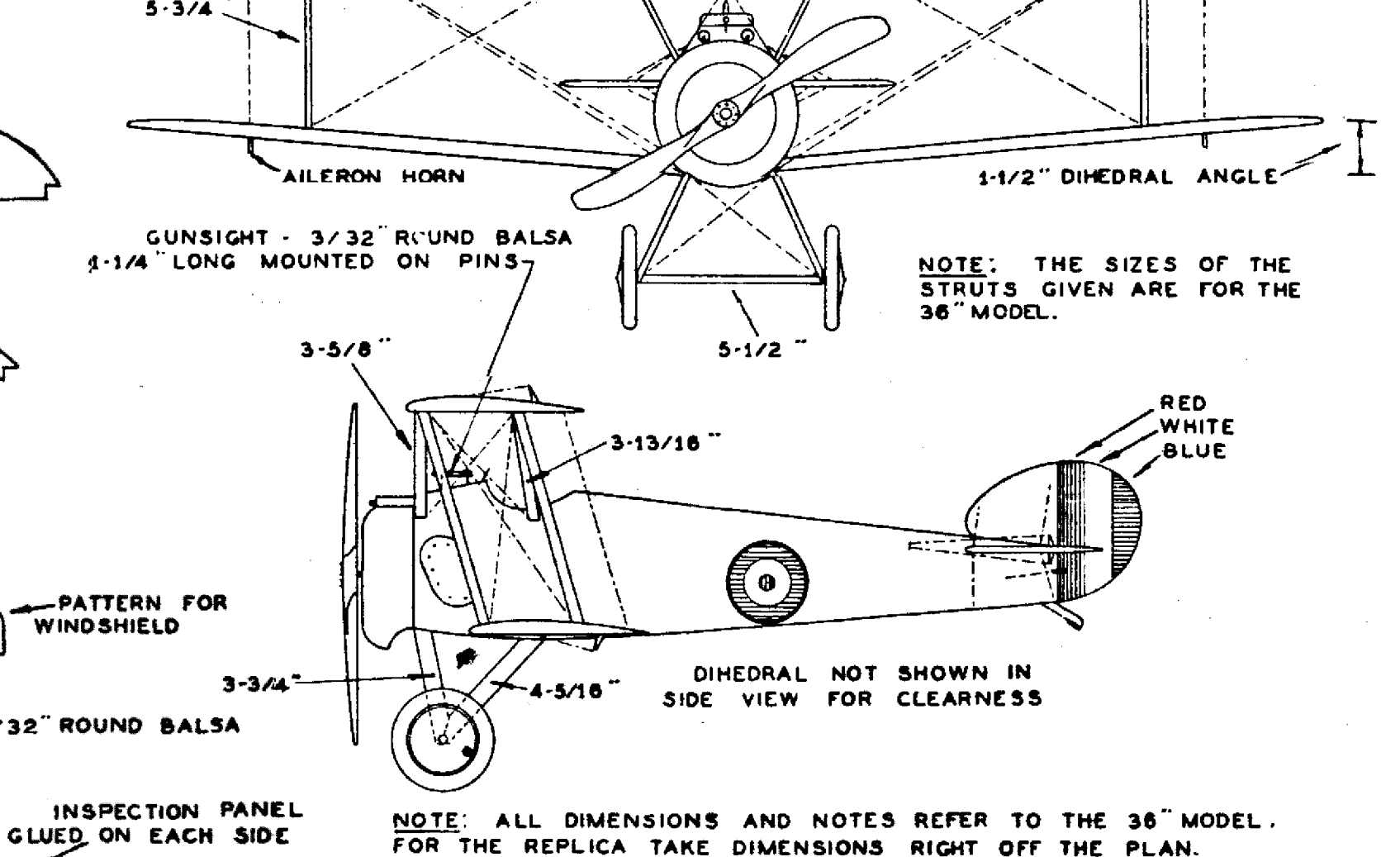
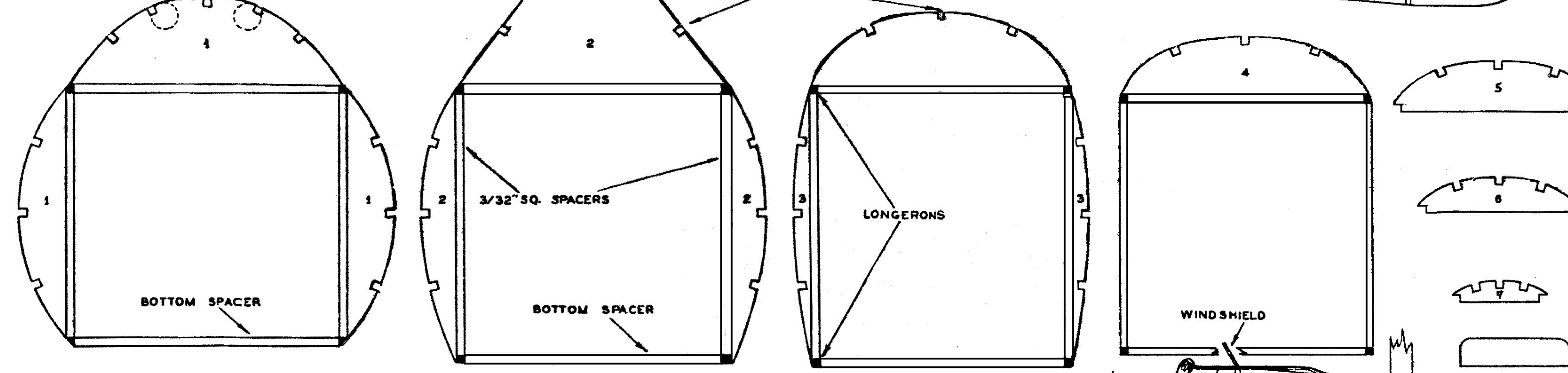
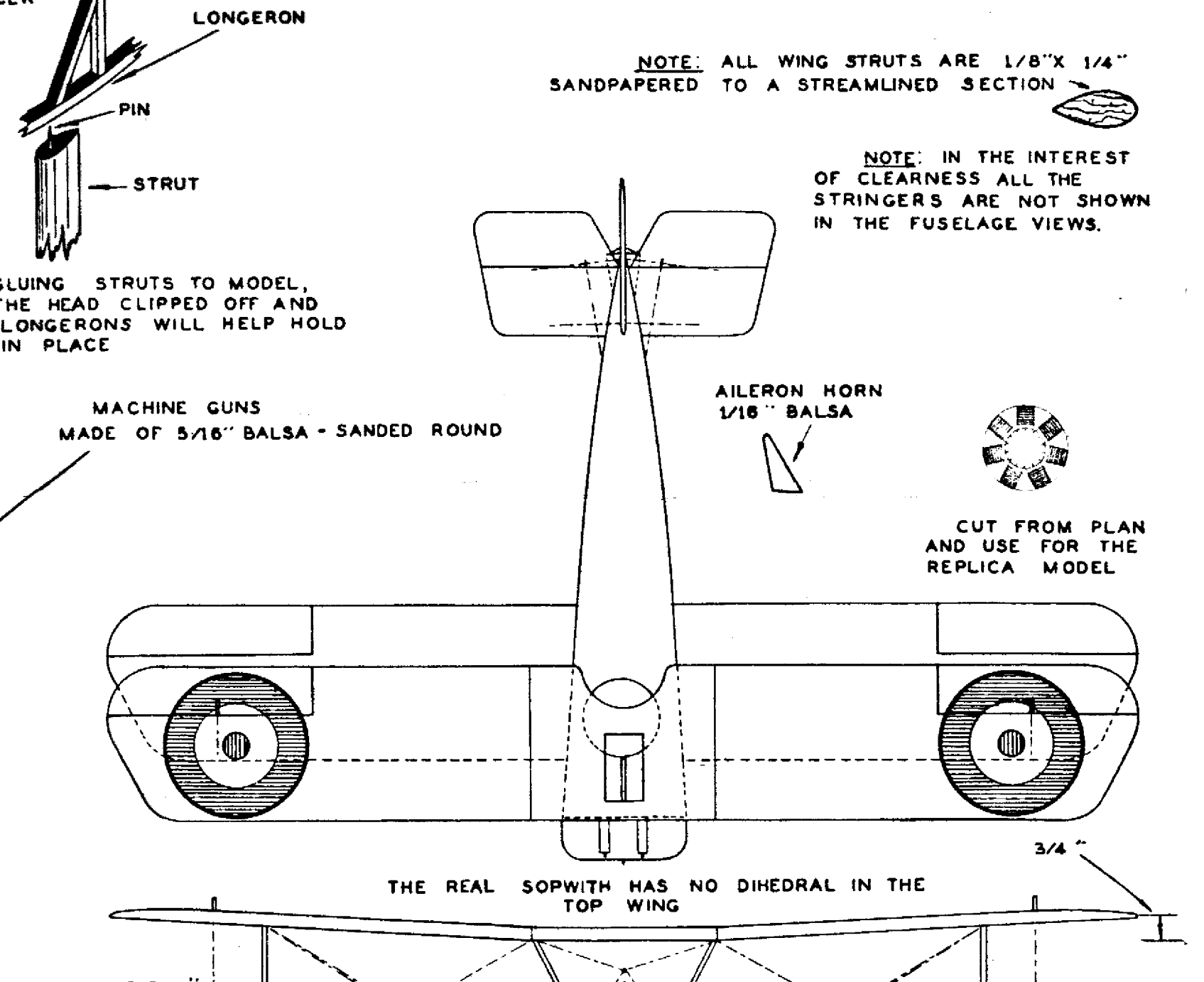
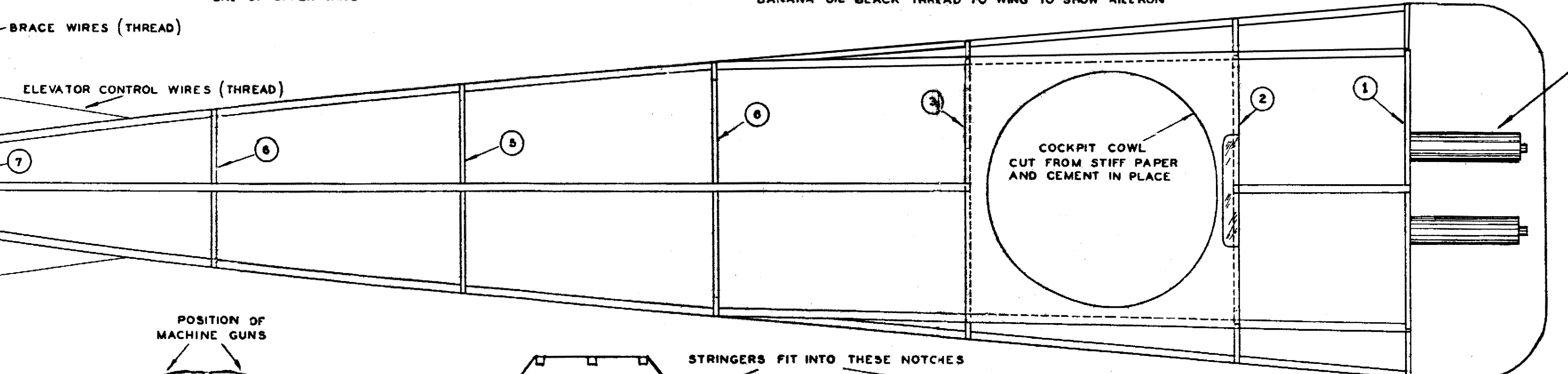
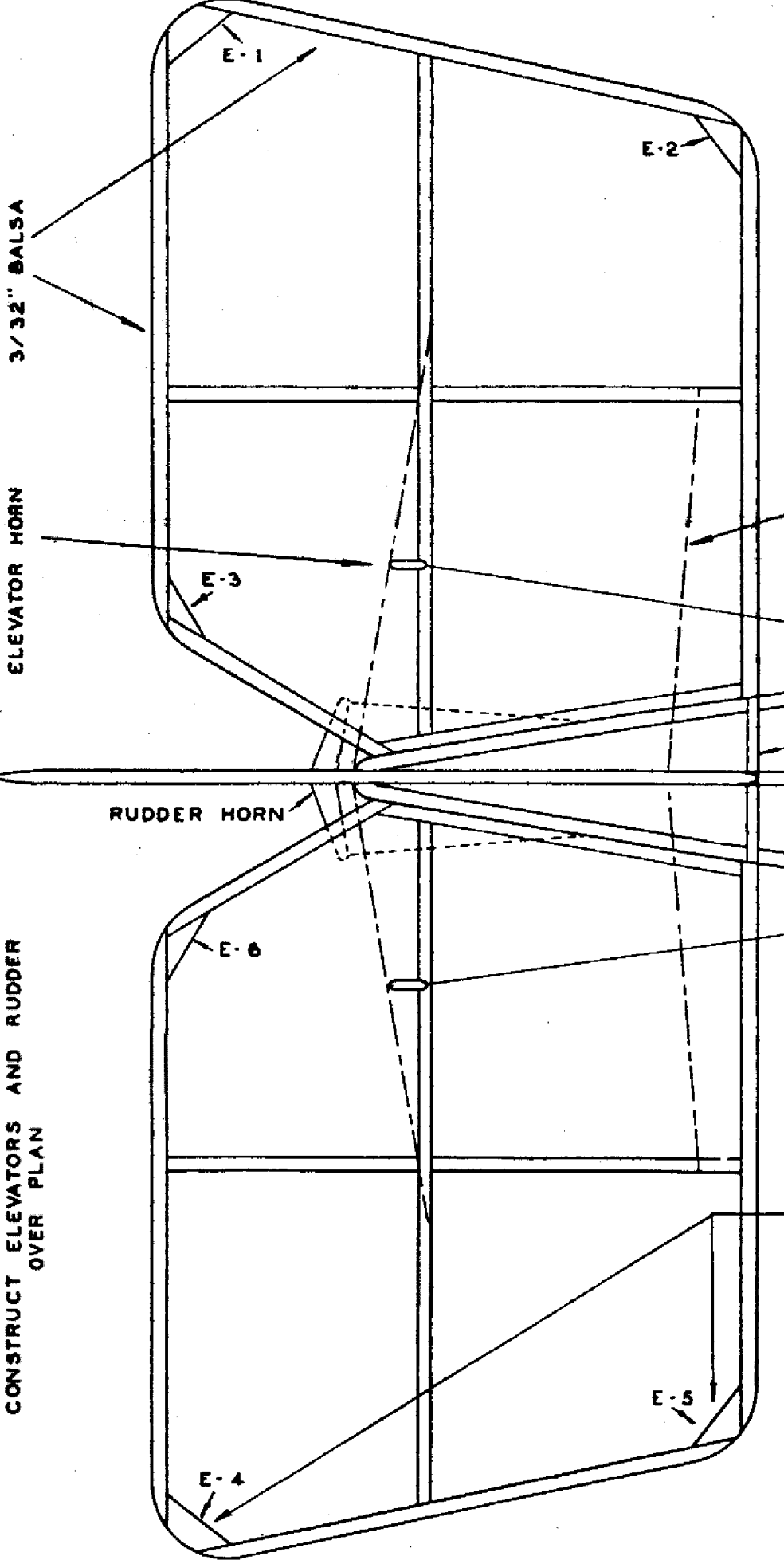
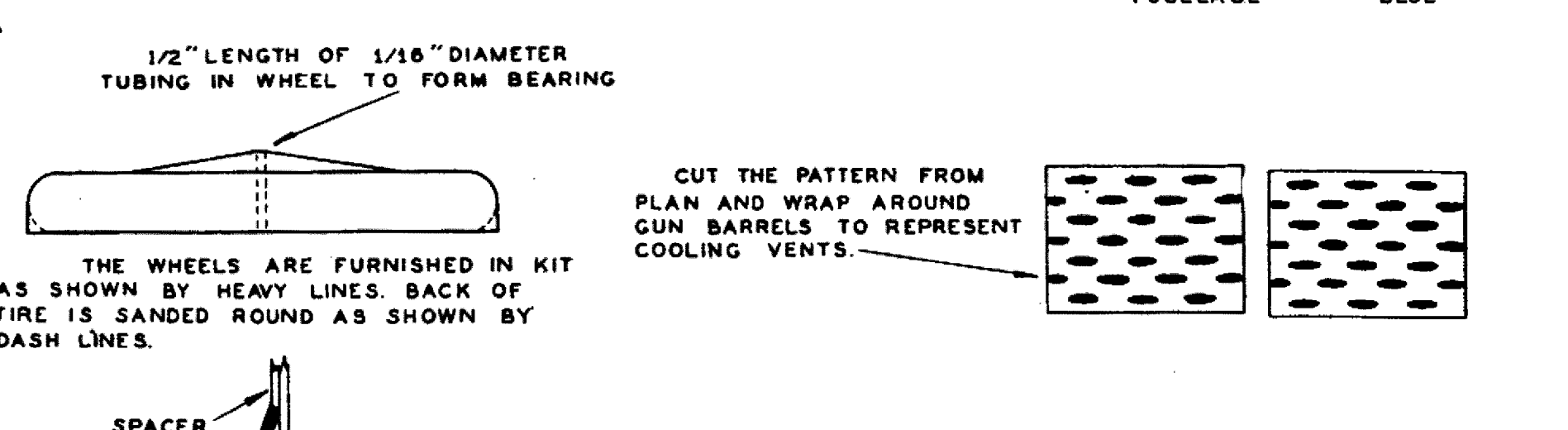
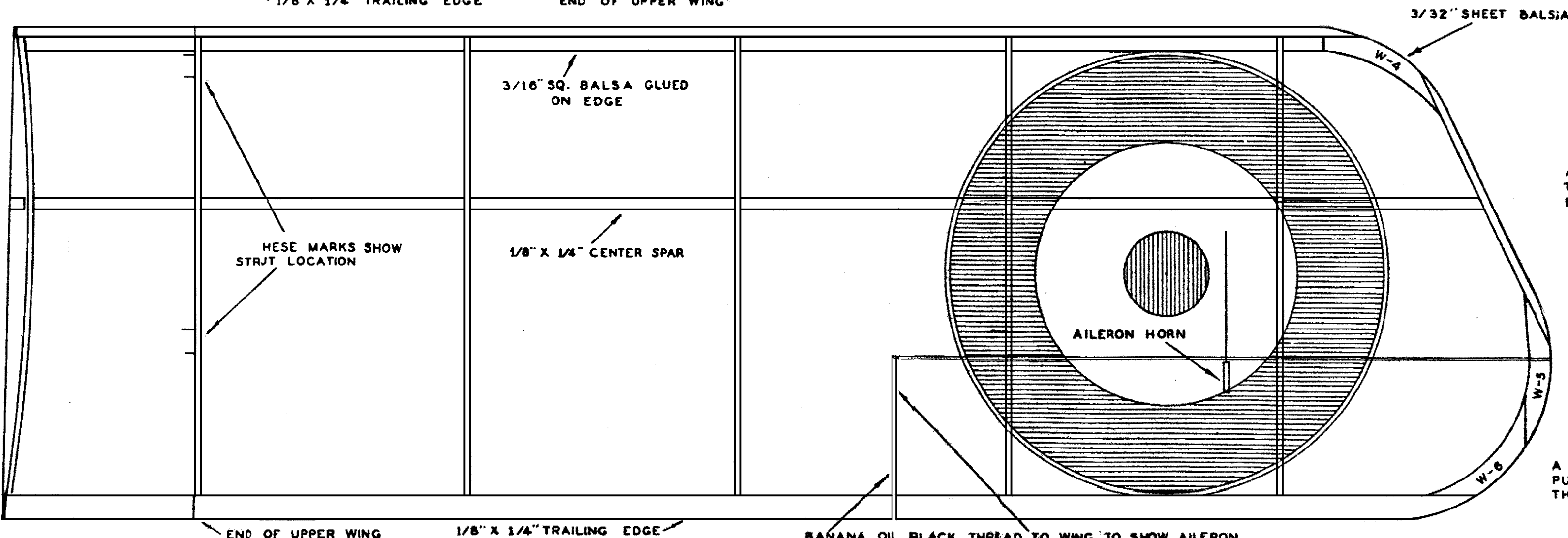
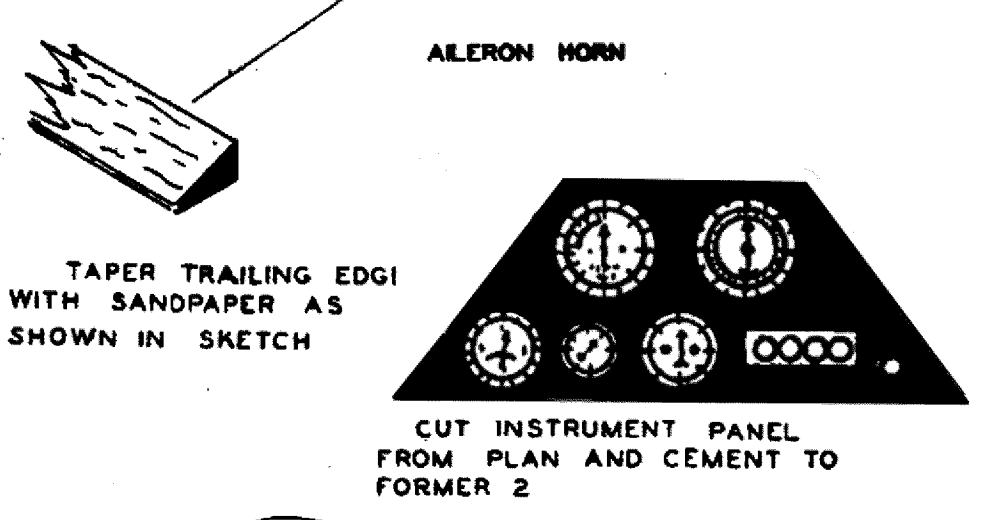
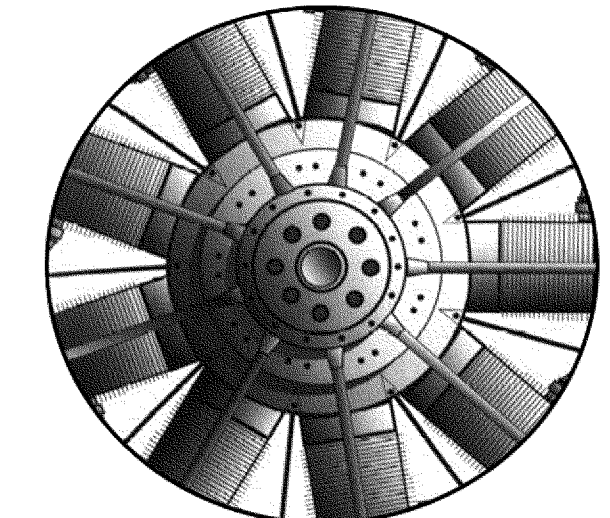


WING CONSTRUCTION NOTES
CUT ALL THE RIBS FROM THE PRINTED SHEET. THE WINGS ARE BUILT DIRECTLY OVER THE PLAN. FOR THE LOWER WINGS, BUILD OVER THE COMPLETE RIGHT AND LEFT PANELS. FOR THE TOP WING, BUILD THE CENTER SECTION SHOWN AT LEFT, AND THE SIDE PANELS ONE RIB SHORTER AS SHOWN BY THE LINE S ACROSS THE LEADING AND TRAILING EDGES. THE CENTER SPAR AND TRAILING EDGES ARE PINNED IN PLACE WHILE ASSEMBLING THE WINGS.

-FLYING HINT-
MODEL MAY HAVE A TENDENCY TO STALL BECAUSE OF THE EXTREME FORWARD POSITION OF THE WINGS. PLACE WEIGHT, SUCH AS NAILS OR WOOD SCREWS INTO BOTTOM OF COWL BLOCK TO OVERCOME THIS TENDENCY.



ROBERT REEDER

LAY WAXED PAPER OVER PLAN. PUSH PINS IN DOTS SHOWN. LAY 3/32" SQ. LONGERONS IN POSITION OVER HEAVY BLACK LINES. THEN CEMENT 3/32" SQ. SPACERS IN BETWEEN. MAKE TWO SUCH SIDES. THEN JOIN TOGETHER WITH THE REAR BLOCK, TOP OF FORMER 1, AND BOTTOM SPACER. WHEN DRY, CEMENT OTHERS IN PLACE.

SOPWITH CAMEL
WINGSPAN 36" LENGTH 23"
KIT NO. 10A-123 SERIES ONE STAR
DRAWN BY [Signature] LETTERED BY [Signature]
COMET MODEL AIRPLANE AND SUPPLY CO. INC.
SCANNED AND RESTORED FEB., 2011 PD1