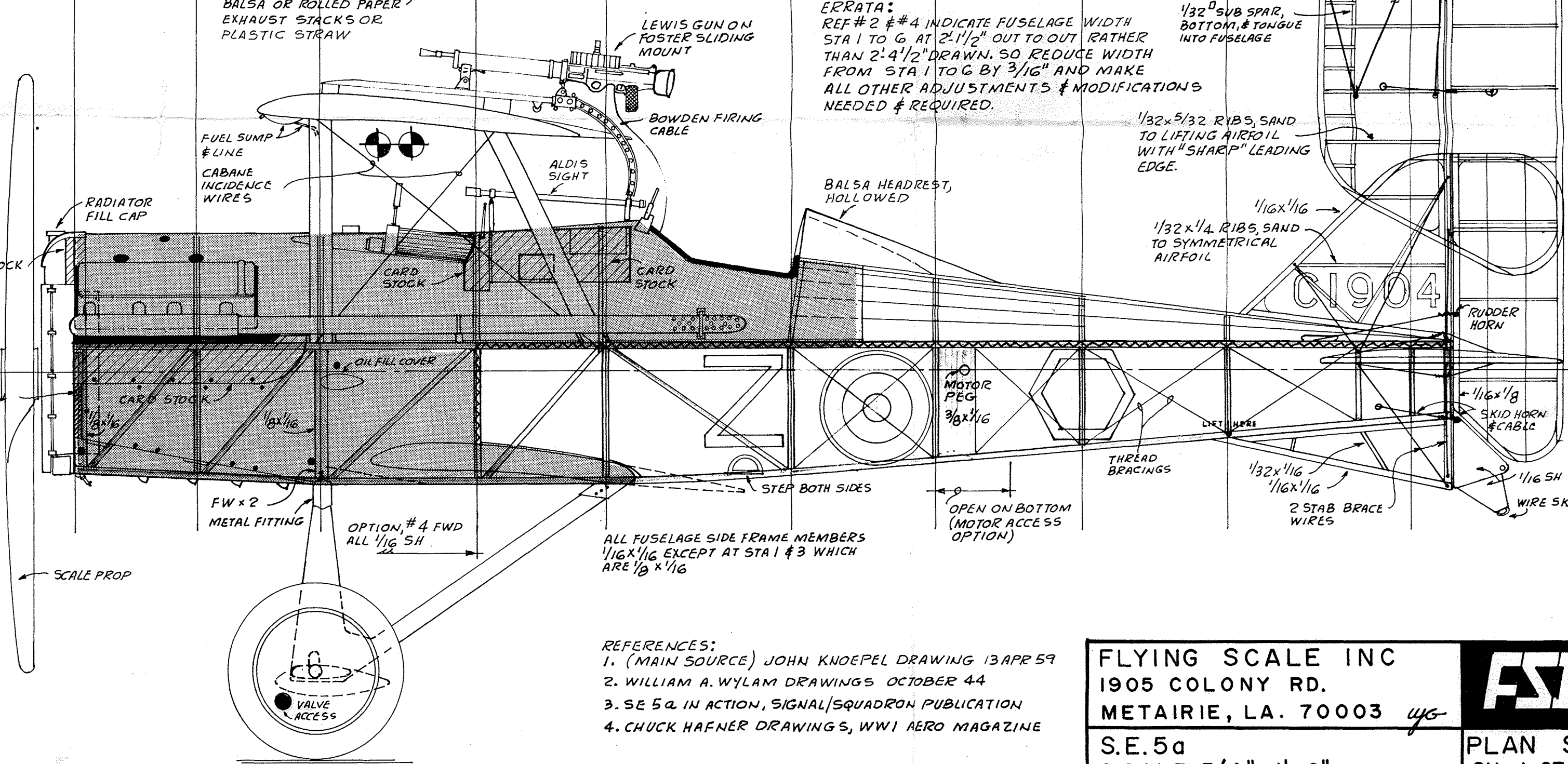
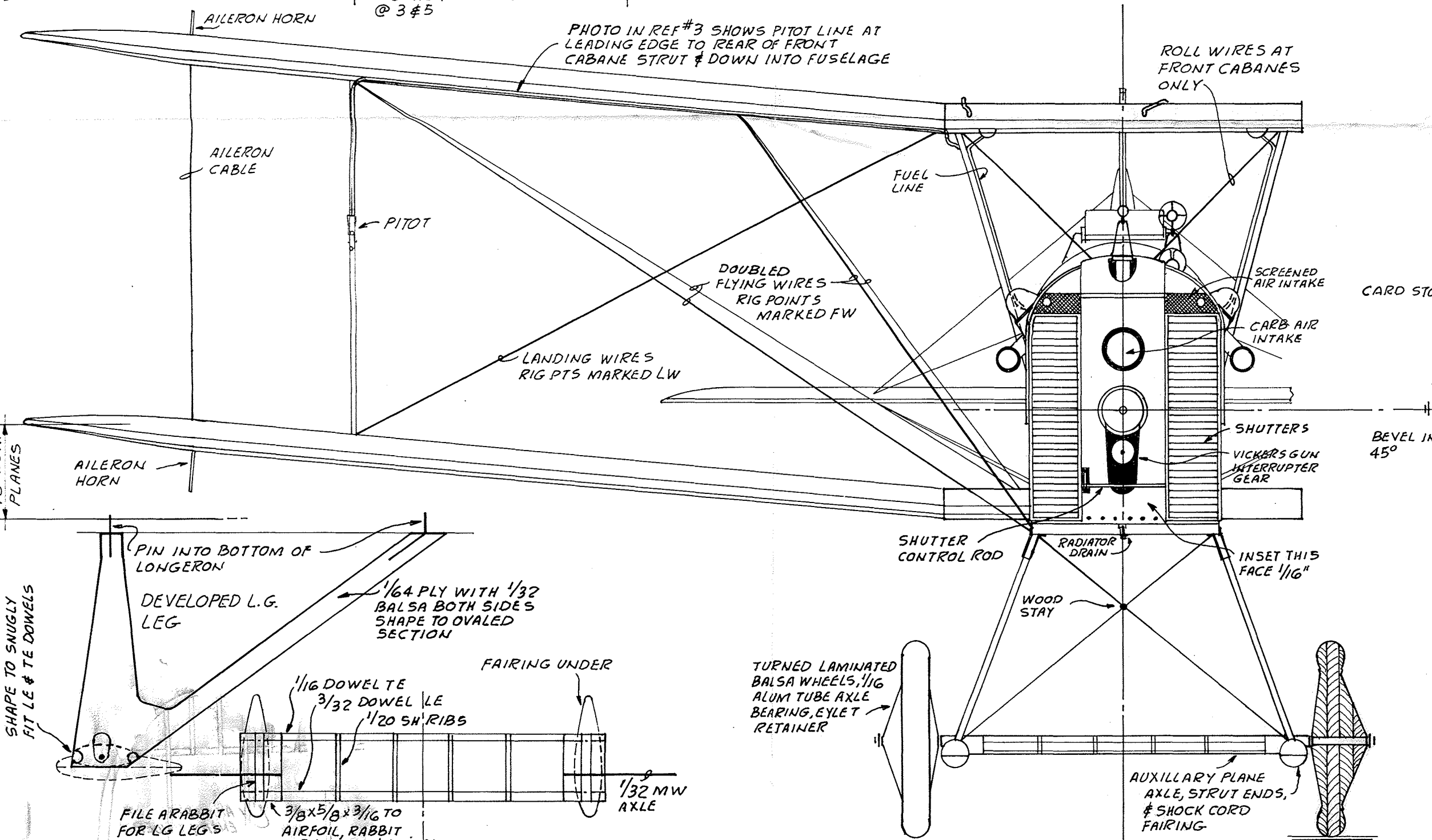
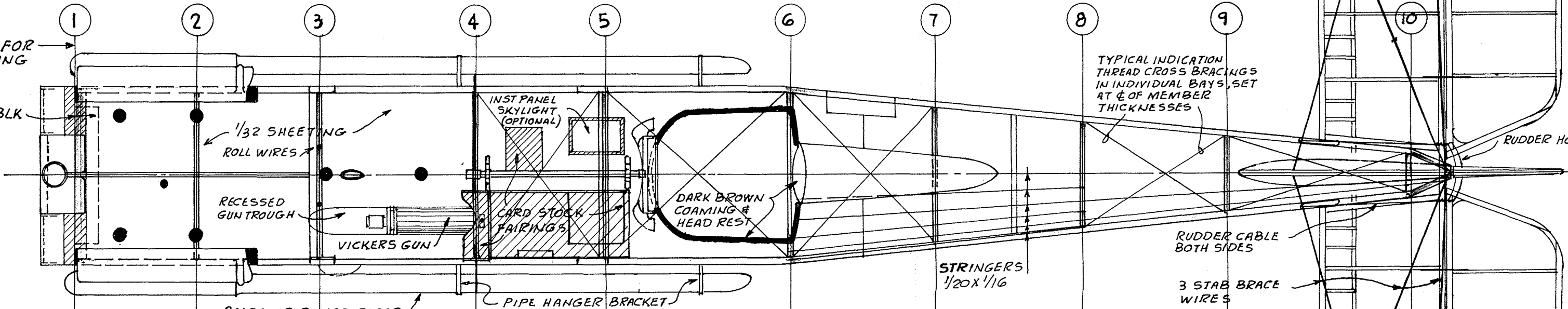
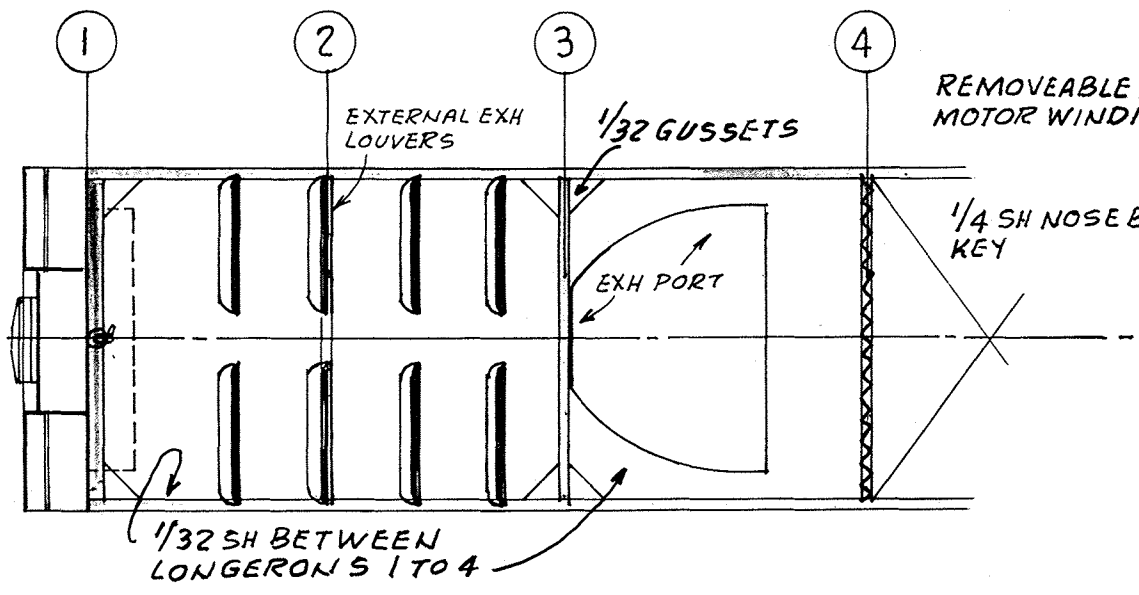
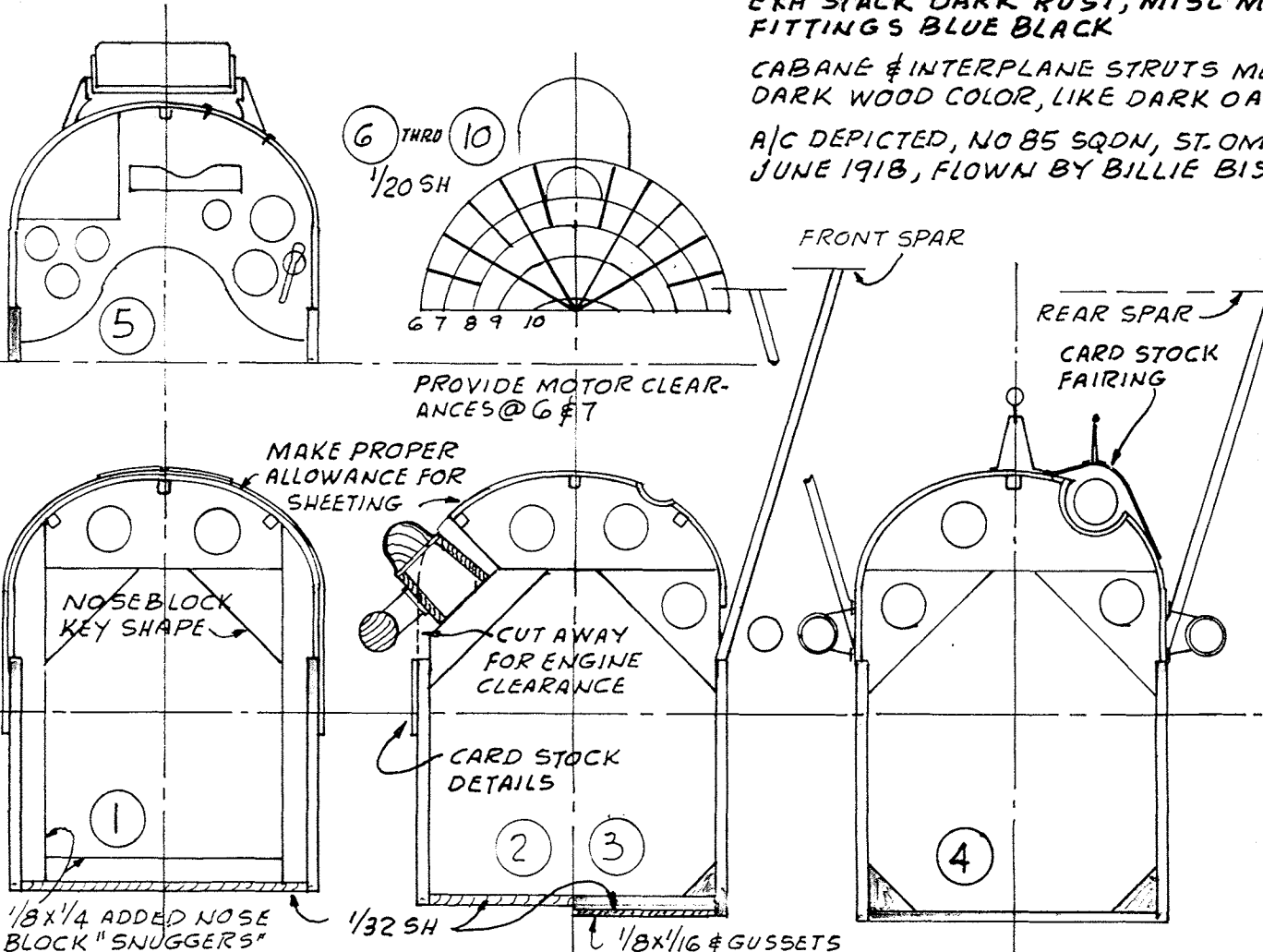
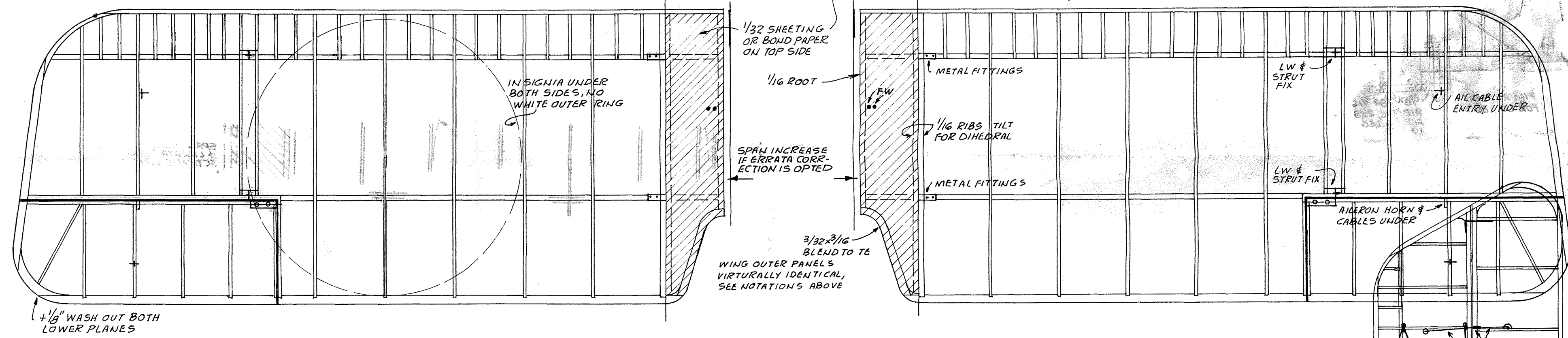
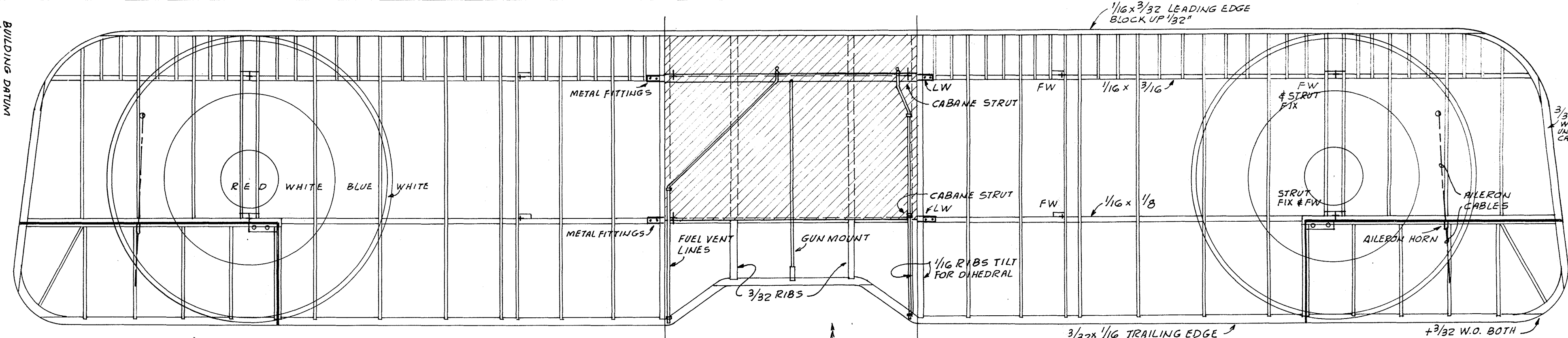


CUT PROP BLADES FROM PLASTIC BOTTLE WITH TIPS TILTED ABOUT 18° LEFT OF HUBS. CAREFULLY EPOXY INTO SLOTTED WOOD HUB & BLEND HUB INTO BLADES, BALANCE ASSEMBLY AND PAINT ALIGHT WOOD COLOR.

SUGGESTED MOTOR:
12/14 STRANDS OF 1/8 OR 8/10 STRANDS OF 3/16 TO FORM 6/7 OR 4/5 LOOPS 16" LONG. BRAID/PLAIT TO FINAL LENGTH OF 8 3/4 TO 9 1/4"

COLOR SCHEME:
UNDER SURFACES OF BOTH WINGS, HORIZ TAIL, L.G. RUX PLANE & FUSELAGE NATURAL LINEN, REMAINDER OF A/C OLIVE BROWN.
Z, O & C1904 WHITE
EXH STACK DARK RUST, MISC METAL FITTINGS BLUE BLACK
CABANE & INTERPLANE STRUTS MEDIUM DARK WOOD COLOR, LIKE DARK OAK.
A/C DEPICTED, NO 85 SQDN, ST OMER DURING JUNE 1918, FLOWN BY BILLIE BISHOP



ERRATA:
REF # 2 & # 4 INDICATE FUSELAGE WIDTH STA 1 TO 6, AT 2' 1 1/2" OUT TO OUT RATHER THAN 2' 4 1/2" DRAWN, SO REDUCE WIDTH FROM STA 1 TO 6 BY 3/16" AND MAKE ALL OTHER ADJUSTMENTS & MODIFICATIONS NEEDED & REQUIRED.

- REFERENCES:
1. (MAIN SOURCE) JOHN KNOEPEL DRAWING 13 APR 59
2. WILLIAM A. WYLAM DRAWINGS OCTOBER 44
3. SE 5a IN ACTION, SIGNAL SQUADRON PUBLICATION
4. CHUCK HAFNER DRAWINGS, WWI AERO MAGAZINE

FLYING SCALE INC
1905 COLONY RD.
METAIRIE, LA. 70003
S.E. 5a
S SCALE 3/4" = 1'-0"

FSI

PLAN S6
SH 1 OF 1