

KEEP ALL UP WEIGHT OF FLYING MODEL NOT MORE THAN 2 1/2 OZ, PREFERABLY 1 3/4 OZ OR LESS
 MOTOR 8 TO 12 STRANDS 1/8 TO FORM 4 TO 6 LOOPS 18" LONG, PLAIT/BRAID TO FINAL LENGTH OF 10" TO 12", TRY 500 TO 600 TURNS

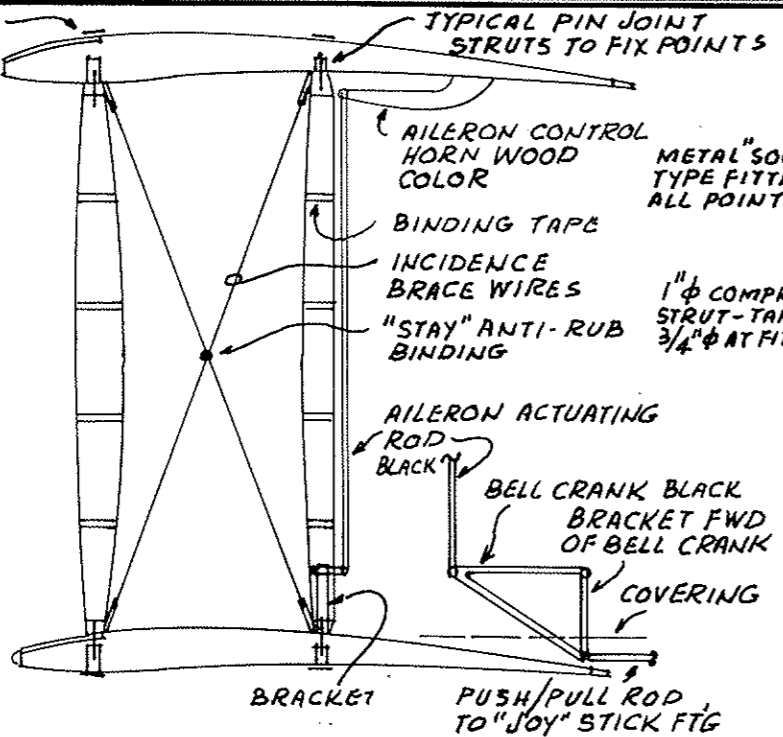
- 1
- 2
- 3
- 4
- 5
- 6
- 7
- 8
- 9
- 10
- 11

EXH STACKS SILVER

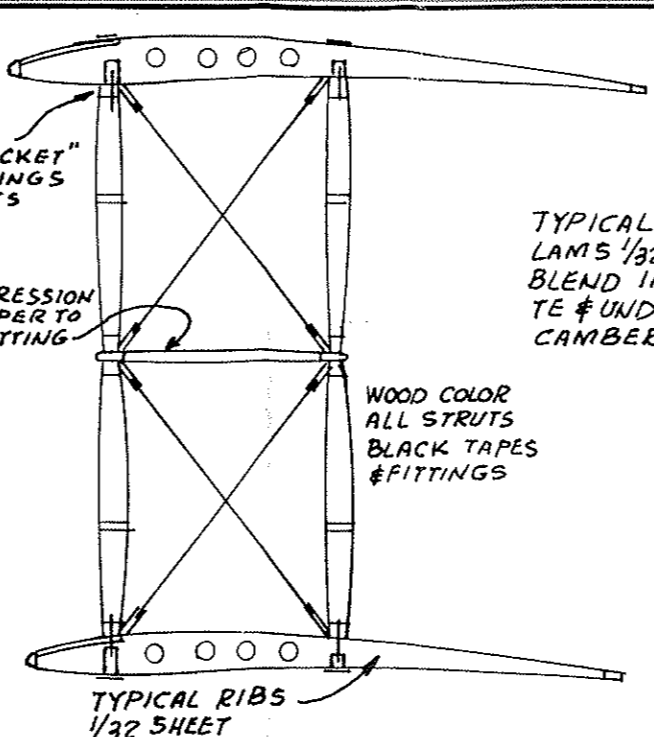
BLACK EXH PIPE

SILVER

APPROX 3" STRUT FITTINGS THRU & ATOP SURFACE OF COVERING - TYPICAL

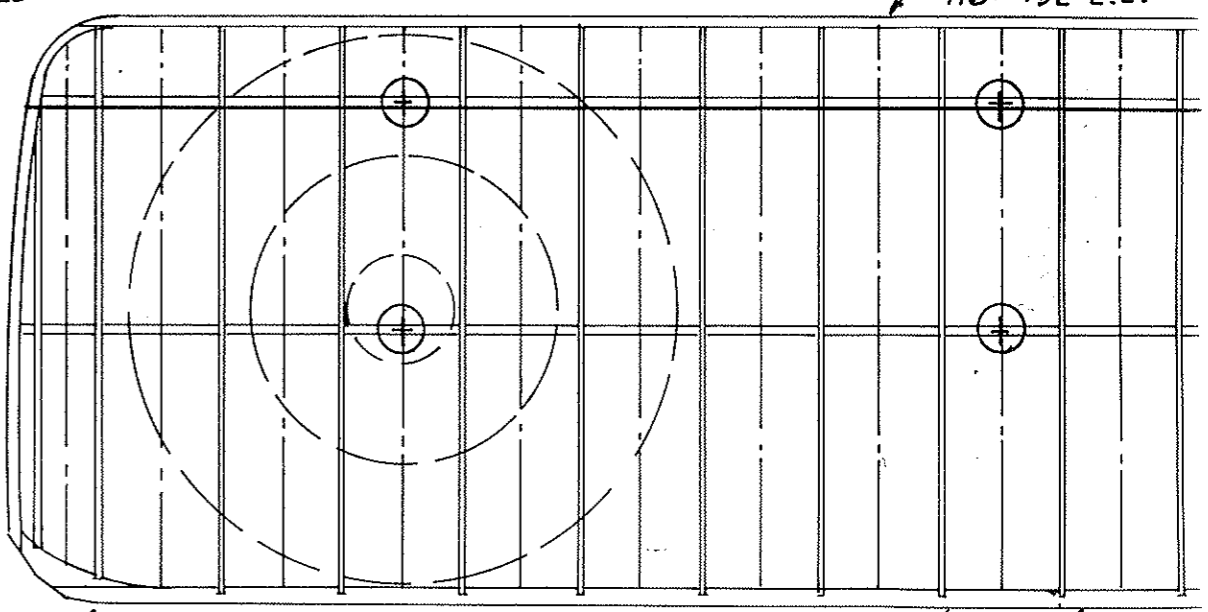
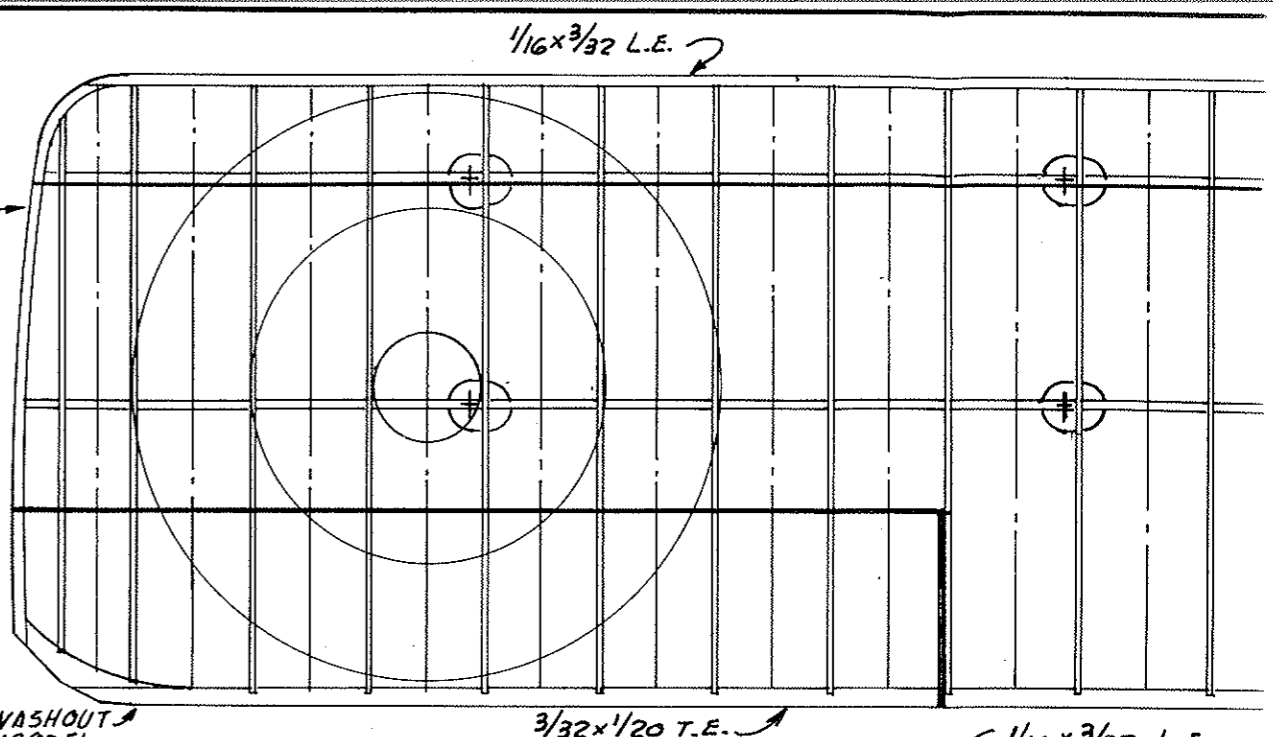


OUTBOARD INTERPLANE STRUTS



INBOARD INTERPLANE STRUTS

TYPICAL 2 LAMS 1/32 x 3/32 BLEND INTO TE & UNDER-CAMBER

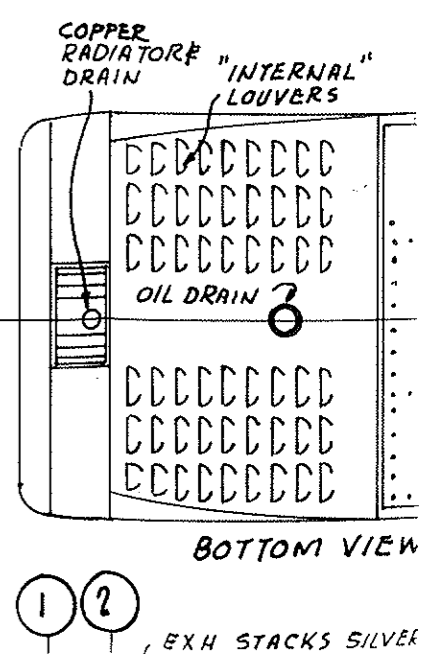
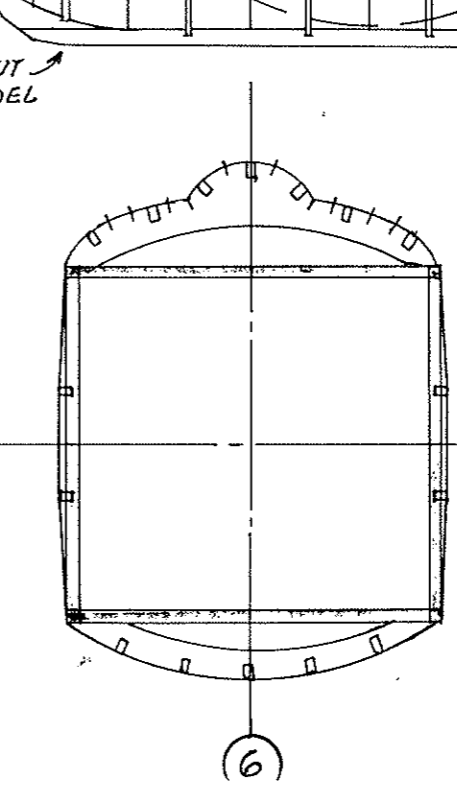
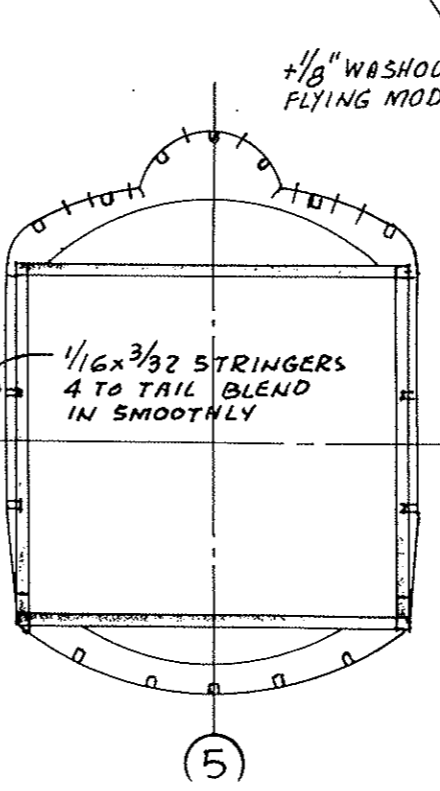
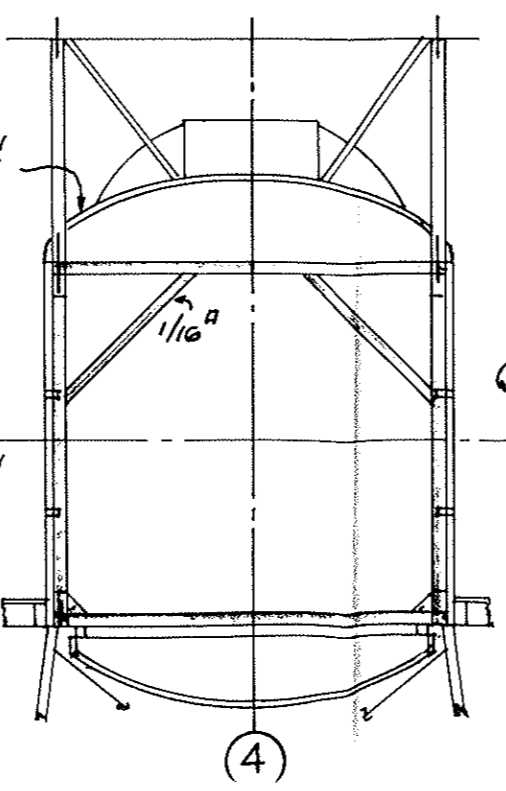
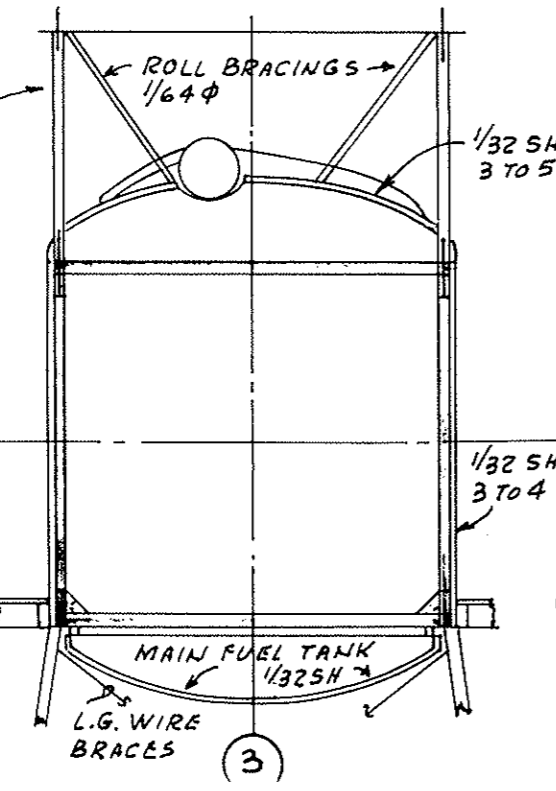
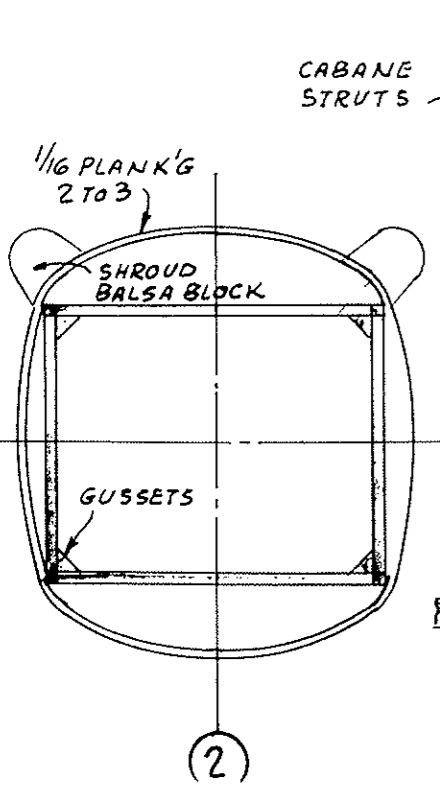


ADDENDUM - COLORING & MARKINGS

REF #4: "THE WORLD OF AVIATION", CHRIS ELLIS, HAMLYN PUBLISHING GROUP LTD, LONDON, NEW YORK, SYDNEY, TORONTO, CC 1977, ON PG 54 IS A COLOR PAINTING OF SPAD VII S OF ESCADRILLE SPA 3 "LES CICOGNE S" FEATURING GUYNEMER'S A/C. DIFFERENCES FROM THOSE ITEMS SHOWN ON THIS DRAWING:

- 1- LANDING GEAR STRUTS, SPREADER BARS & WHEEL COVER - DEEPENED YELLOWISH COLOR
- 2- SQD'N INSIGNIA - WINGS MORE VERTICAL & HARNOWER CHORD
- 3- #2 SLIGHTLY DIFFERENT SHAPE, MORE LIKE 2
- 4- RUDDER # S 245

WHICHEVER YOU OPT, BE CERTAIN MODEL AGREES FULLY WITH YOUR PRESENTATION FOR STATIC JUDGING. MAR 1991 UG



BOTTOM VIEW