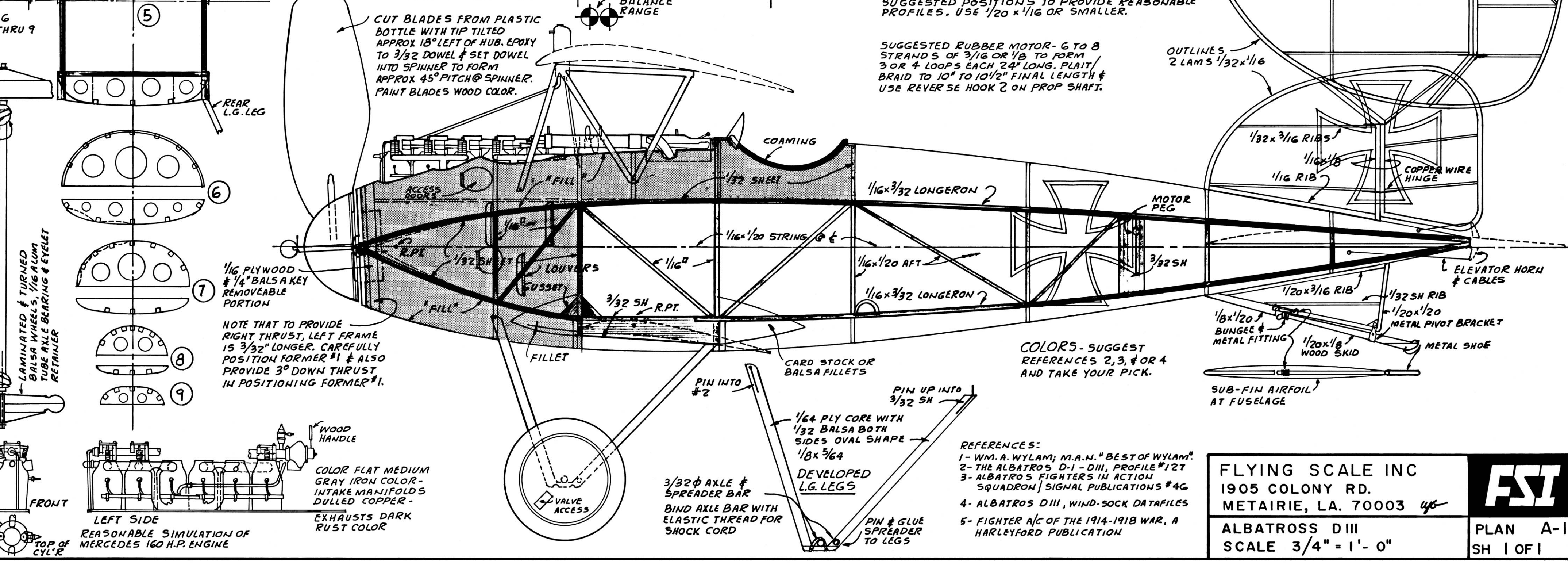
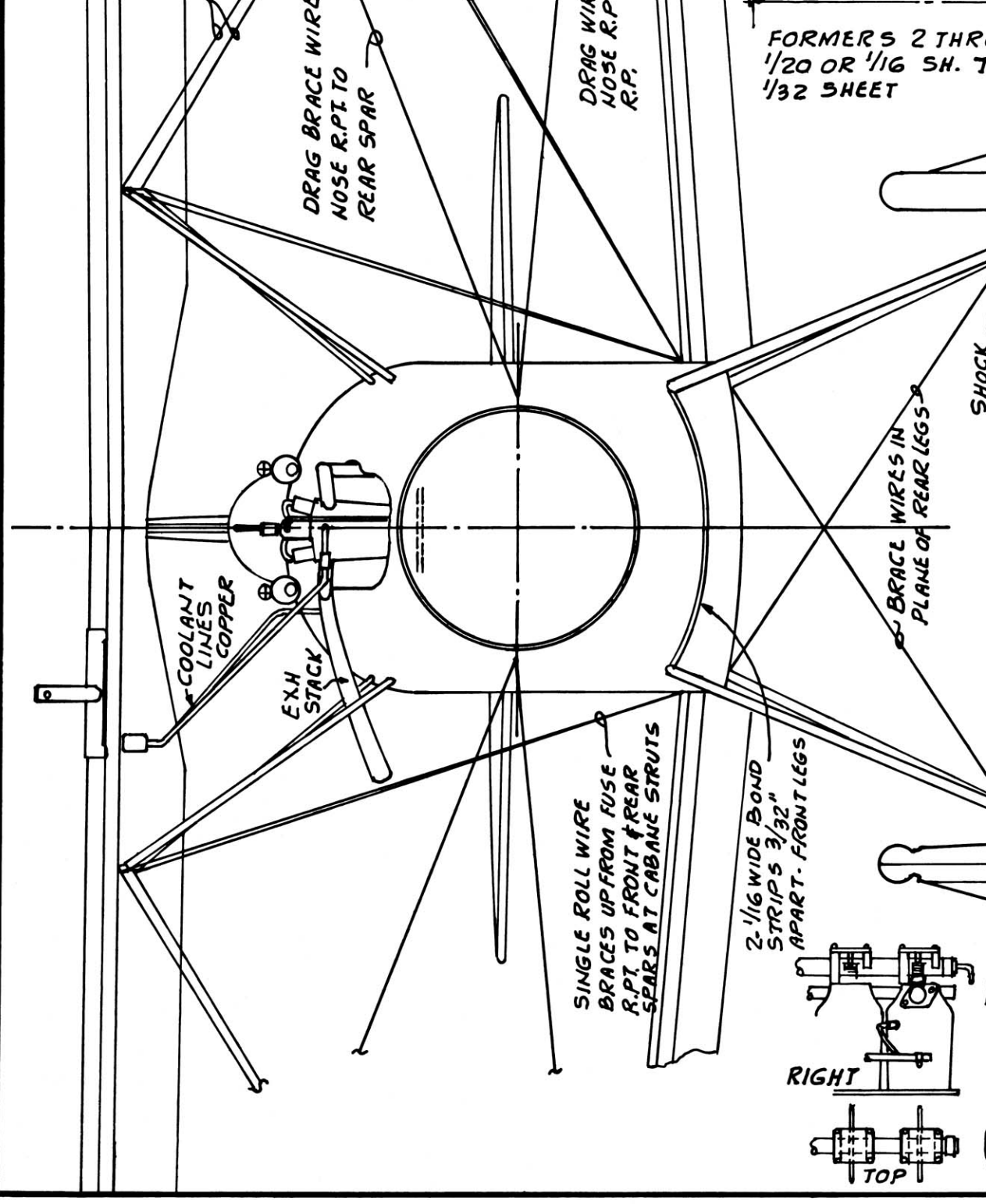
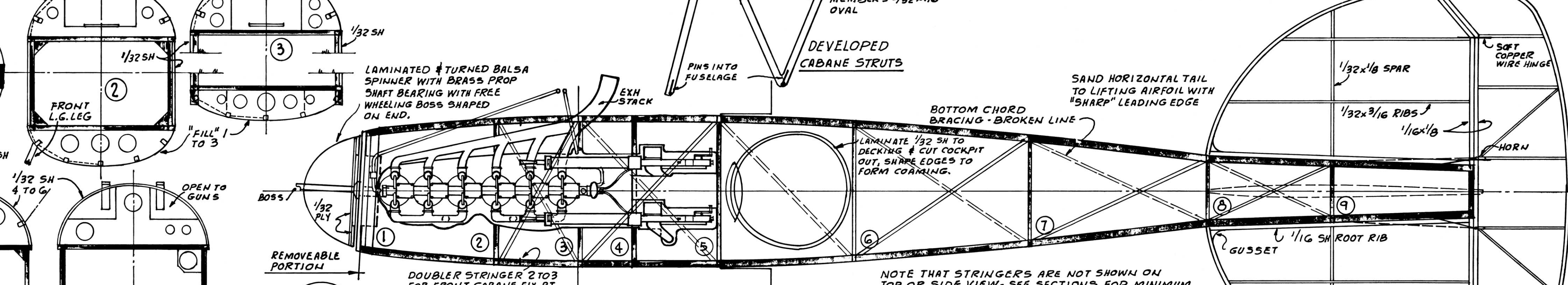
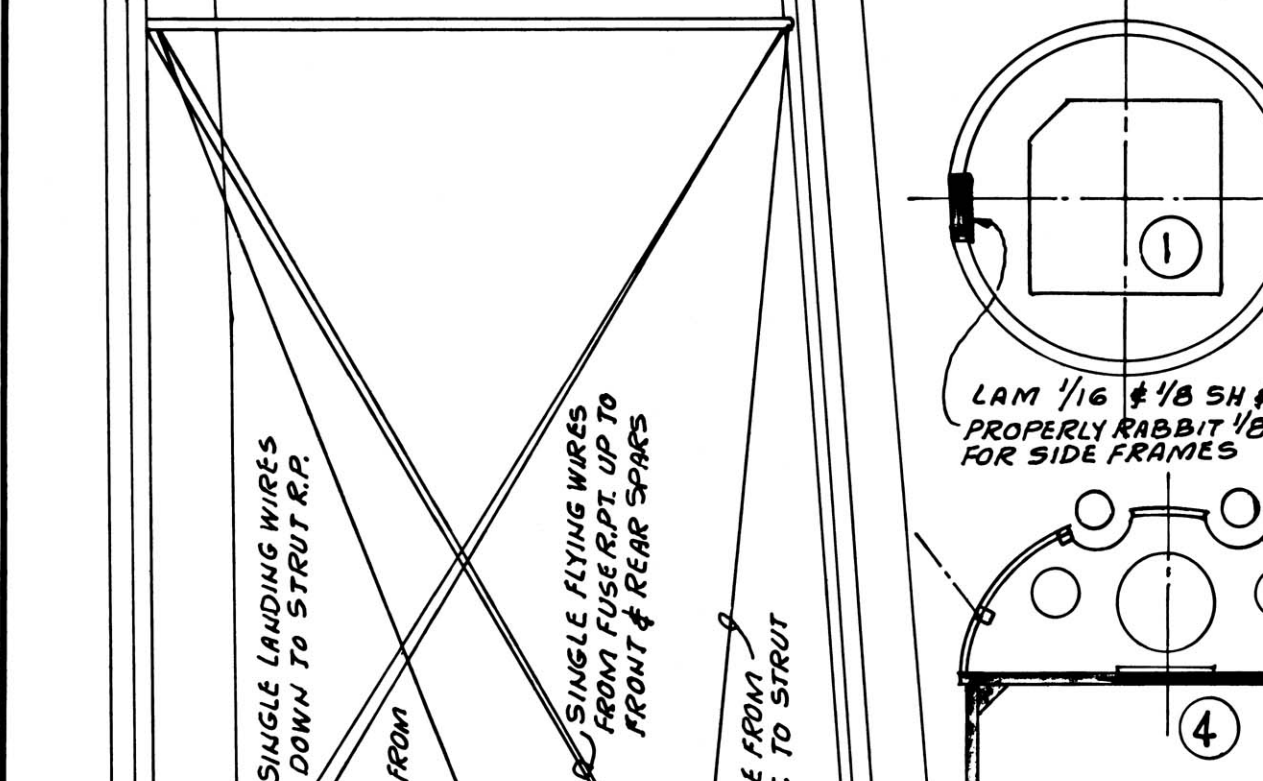
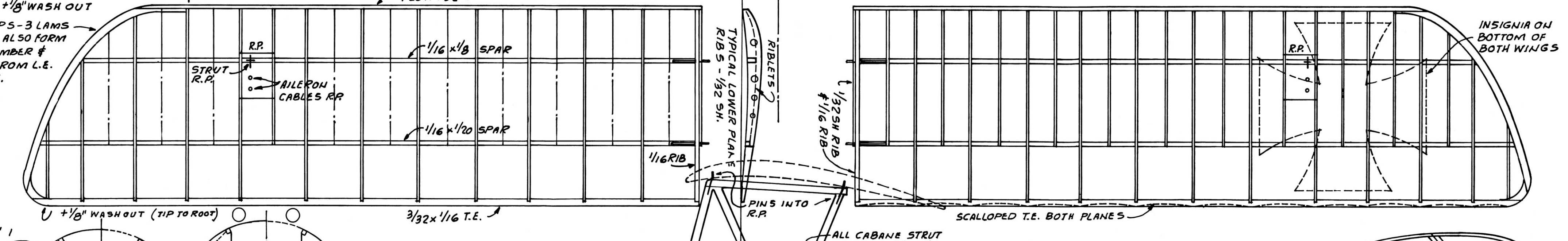
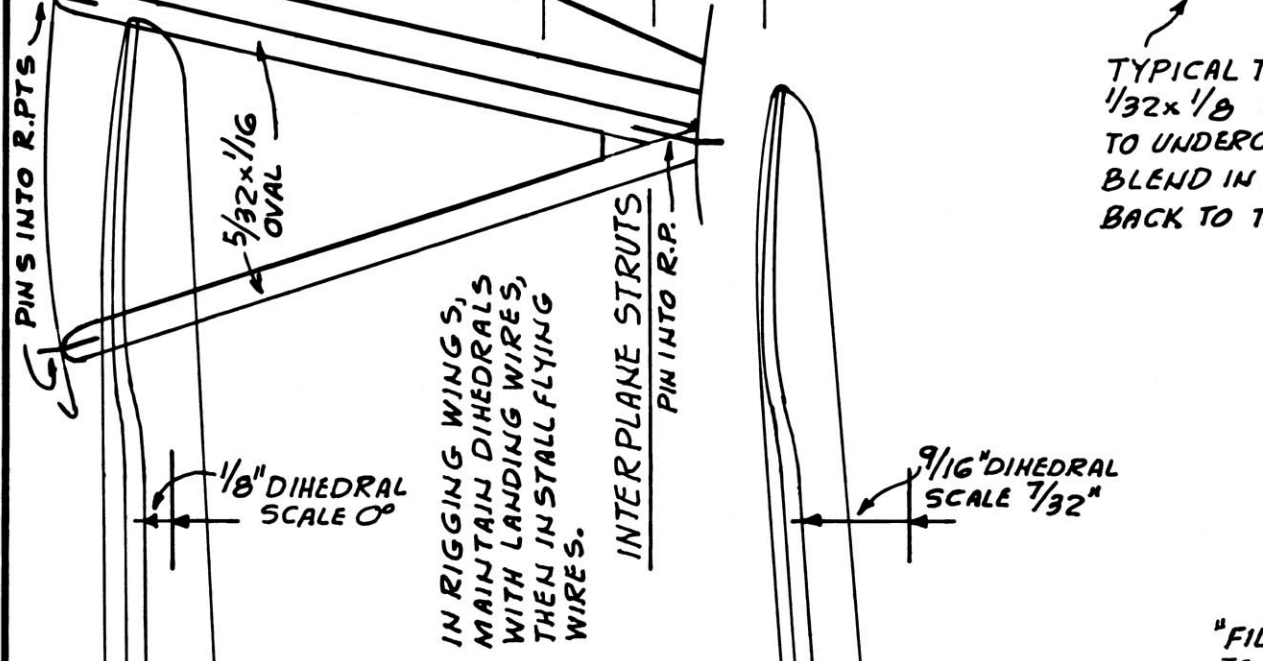
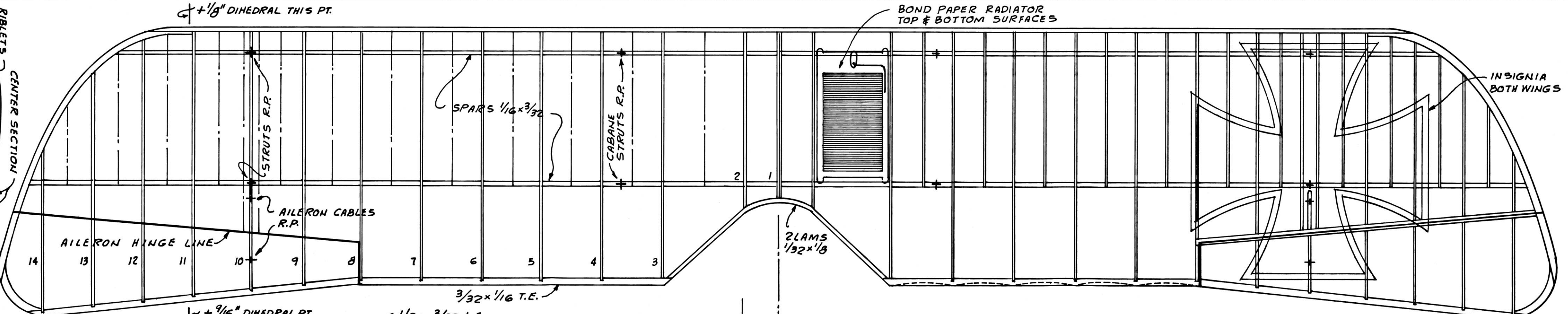
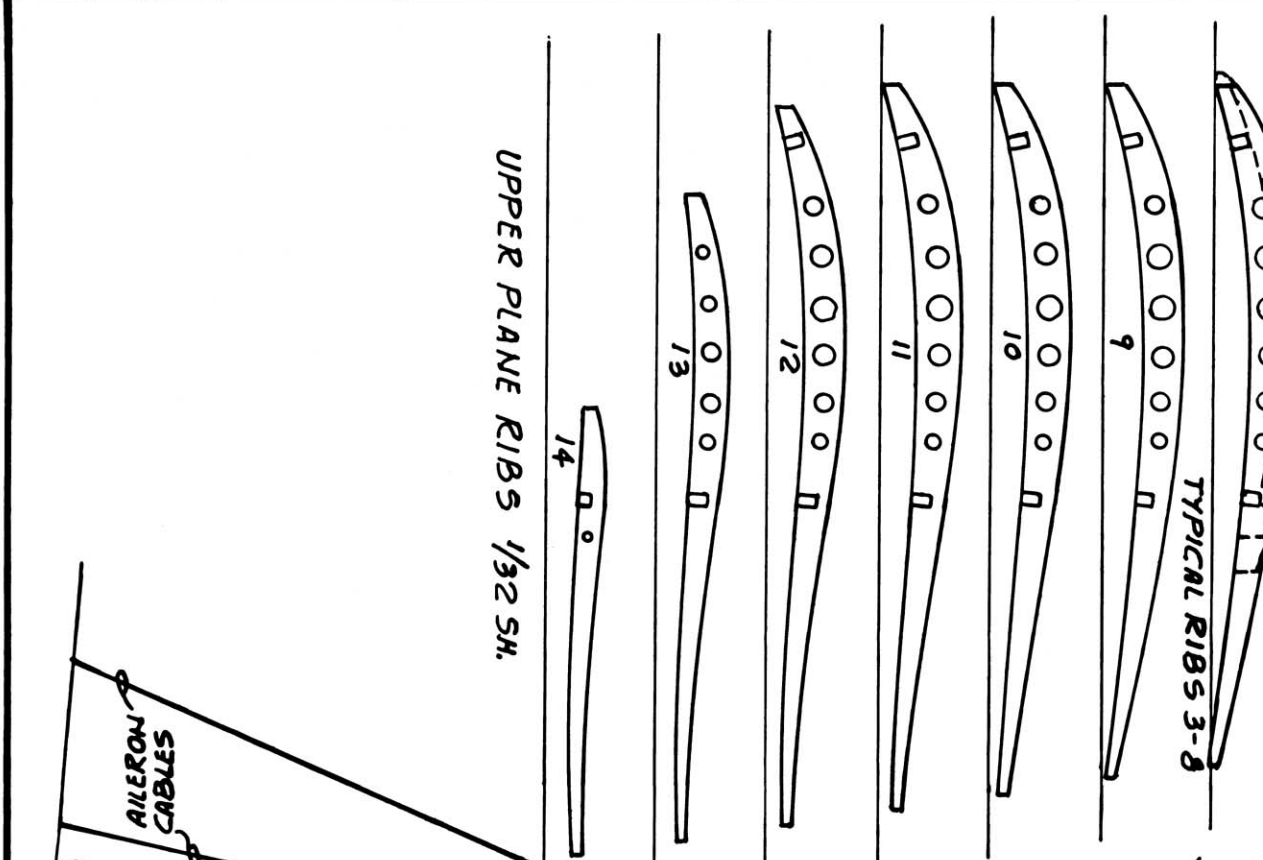


$\pm 1/8$ " DIHEDRAL THIS PT.

BOND PAPER RADIATOR TOP & BOTTOM SURFACES

INSIGNIA BOTH WINGS

INSIGNIA ON BOTTOM OF BOTH WINGS



NOTE THAT STRINGERS ARE NOT SHOWN ON TOP OR SIDE VIEW - SEE SECTIONS FOR MINIMUM SUGGESTED POSITIONS TO PROVIDE REASONABLE PROFILES. USE 1/20 x 1/16 OR SMALLER.

SUGGESTED RUBBER MOTOR - 6 TO 8 STRANDS OF 3/16 OR 1/8 TO FORM 3 OR 4 LOOPS EACH 2 1/2" LONG. PLAIT/BRAID TO 10° TO 10 1/2° FINAL LENGTH & USE REVERSE HOOK 2 ON PROP SHAFT.

NOTE THAT TO PROVIDE RIGHT THRUST, LEFT FRAME IS 3/32" LONGER. CAREFULLY POSITION FORMER #1 & ALSO PROVIDE 3° DOWN THRUST IN POSITIONING FORMER #1.

COLORS - SUGGEST REFERENCES 2, 3, & 4 AND TAKE YOUR PICK.

- REFERENCES:
- 1 - WM. A. WYLAND, M.A.N. "BEST OF WYLAND"
  - 2 - THE ALBATROSS D-1 - DIII, PROFILE #127
  - 3 - ALBATROSS FIGHTERS IN ACTION SQUADRON SIGNAL PUBLICATIONS #46
  - 4 - ALBATROSS DIII, WIND-SOCK DATAFILES
  - 5 - FIGHTER A/C OF THE 1914-1918 WAR, A HARLEYFORD PUBLICATION

**FLYING SCALE INC**  
 1905 COLONY RD.  
 METAIRIE, LA. 70003 46

**ALBATROSS DIII**  
 SCALE 3/4" = 1'-0"

**FSI**  
 PLAN A-1  
 SH 1 OF 1