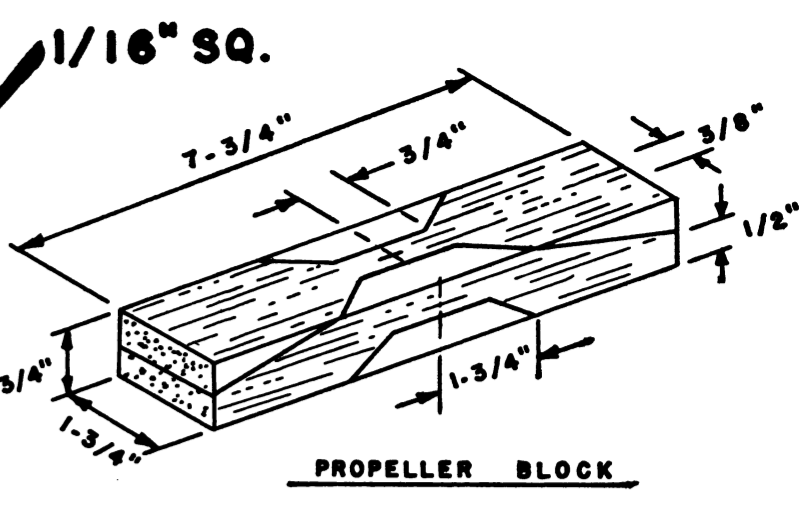


1/16" PLYWOOD DISC

3/8" SQUARE
1/16" SQUARE JOINER



TISSUE COVERING

CANOPY

NOTCH T.E. FOR RIB

"CHEEK" COWL FROM PLASTIC BUBBLE

AILERON OUTLINE

BALANCE LINE
1/16" SQUARE STRINGERS

PLASTIC BUBBLE CANOPY

KENDALL OIL INSIGNIA

SOFT BALS A SPINNER

RATCHET FREE WHEELING DEVICE "JASCO" OR EQUAL

SOFT BALS A BLOCK, HOLLOW TO THE LINE INDICATED

+ 2° INCIDENCE

.032" WIRE LANDING GEAR

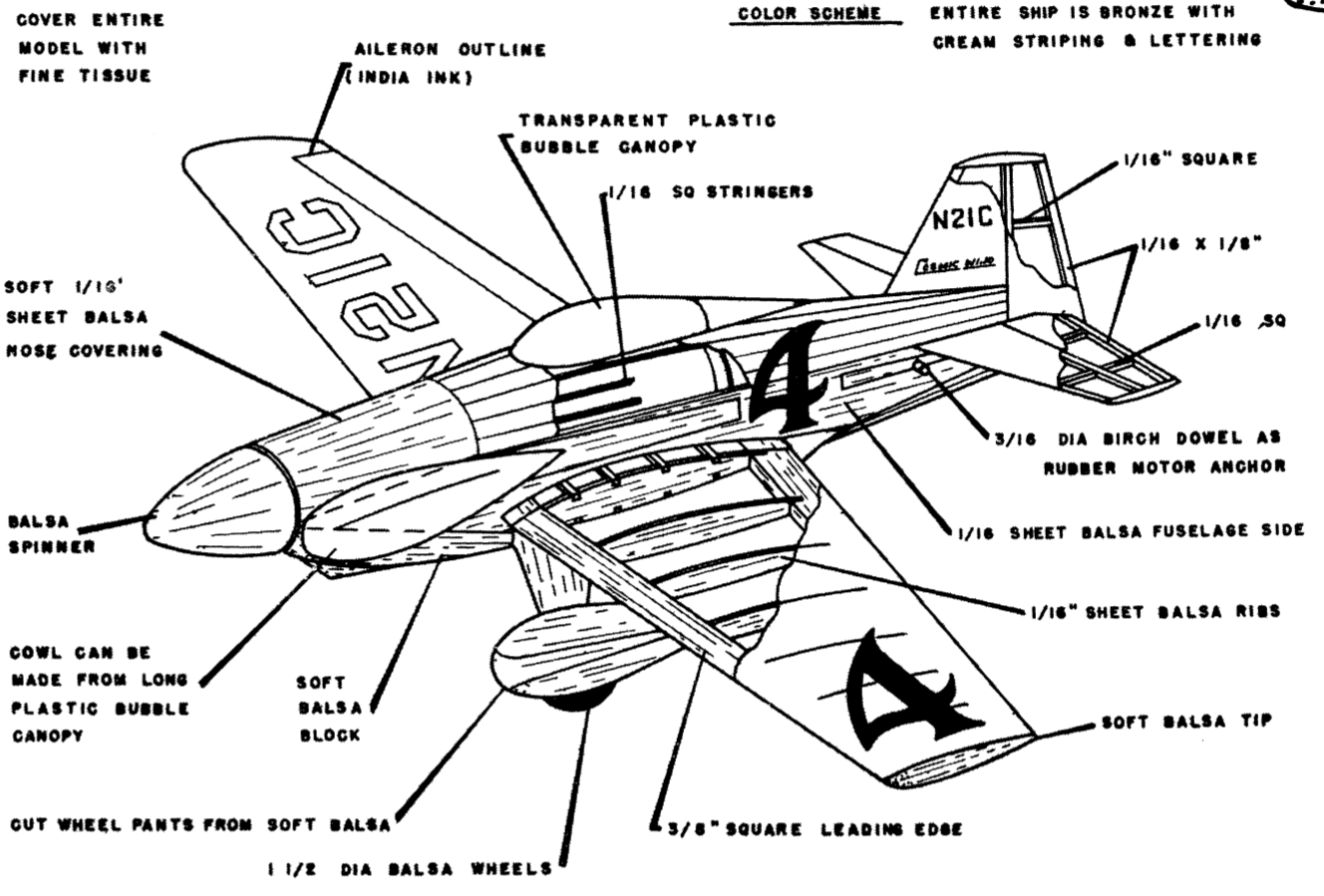
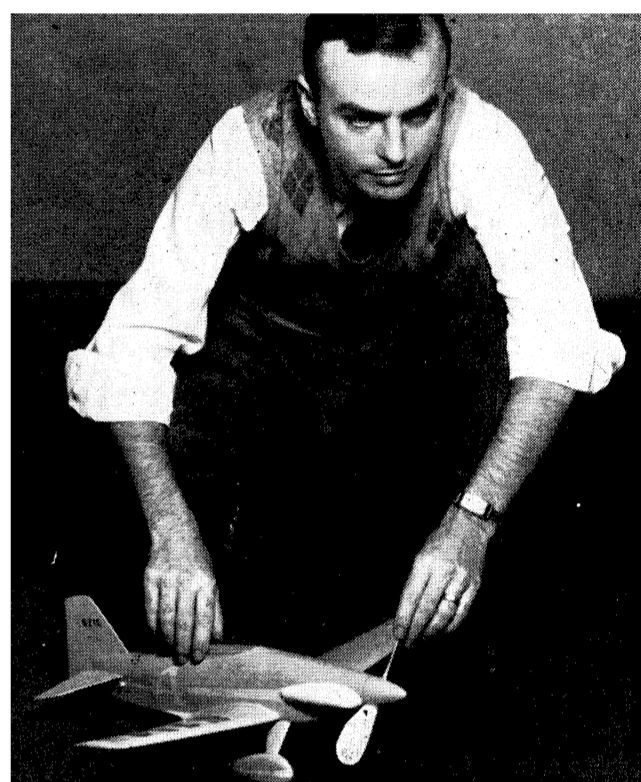
SOFT BALS A PANTS & STRUT

1-1/2" BALS A WHEEL

1/16" SHEET FUSELAGE SIDE

1/8" SHEET REINFORCEMENT (INSIDE)

OSMIC WIND
WALTER A. MUSCIANO



COLOR SCHEME ENTIRE SHIP IS BRONZE WITH CREAM STRIPING & LETTERING

1-1/4" DIHEDRAL

3/8" SHEET CORE

1/8" SHEET FACE

1/16" X 1/8"

1/16" SQUARE

TAIL SKID .032" WIRE