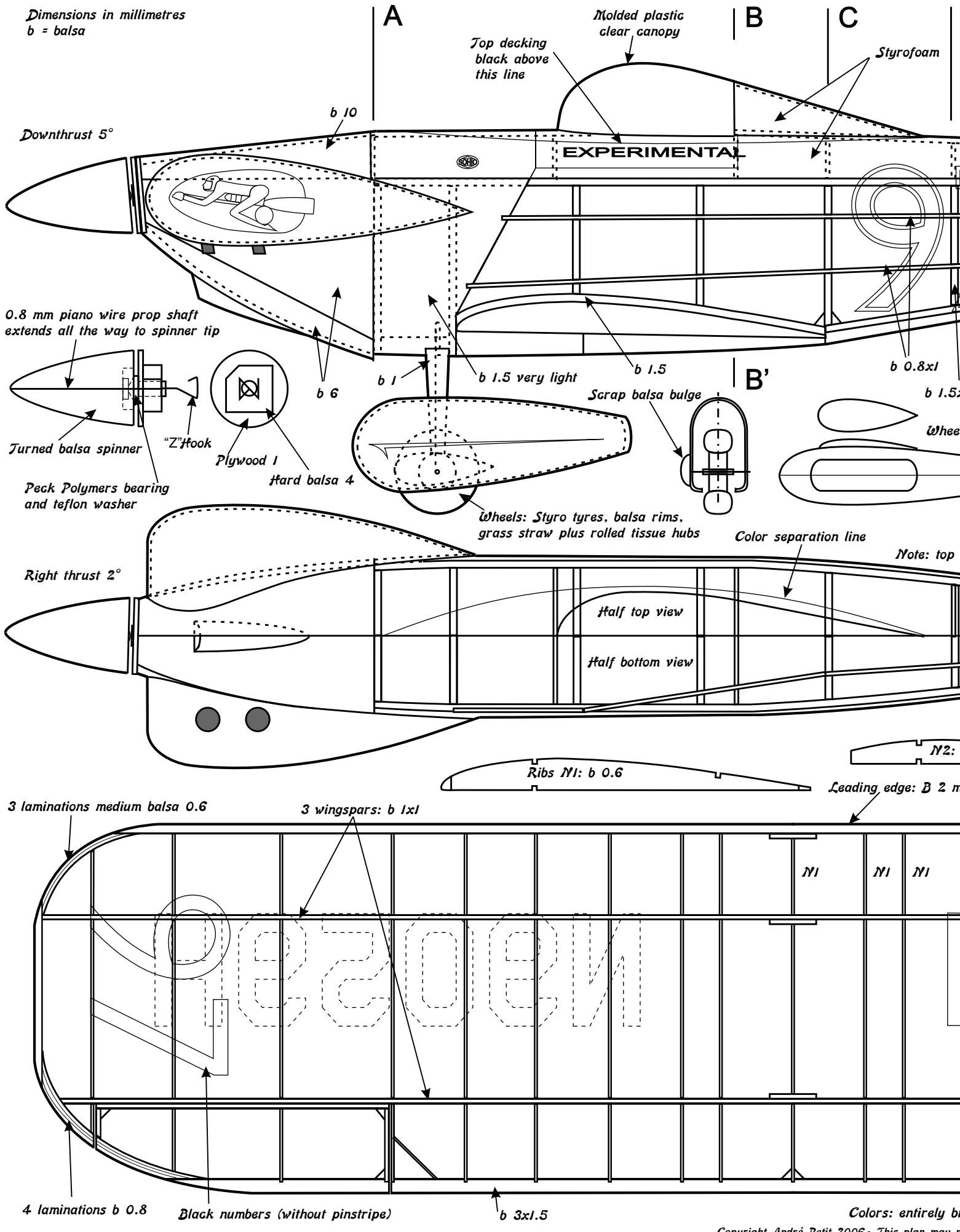


Bart Denight's DDT

A peanut scale model designed by André Petit

Dimensions in millimetres
b = balsa



Downthrust 5°

b 10

Molded plastic clear canopy
Top decking black above this line

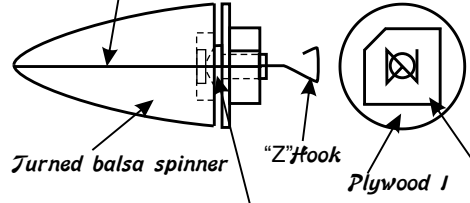
B

C

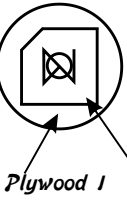
Styrofoam

EXPERIMENTAL

0.8 mm piano wire prop shaft extends all the way to spinner tip



Turned balsa spinner
"Z"hook
Peck Polymers bearing and teflon washer



Plywood 1
Hard balsa 4

b 6

b 1

b 1.5 very light

Scrap balsa bulge

b 1.5

B'

b 0.8x1

b 1.5

Wheels

Wheels: Styro tyres, balsa rims, grass straw plus rolled tissue hubs

Color separation line

Note: top

Right thrust 2°

Half top view

Half bottom view

Ribs N1: b 0.6

N2:

Leading edge: B 2 m

3 laminations medium balsa 0.6

3 wingspars: b 1x1

N1

N1

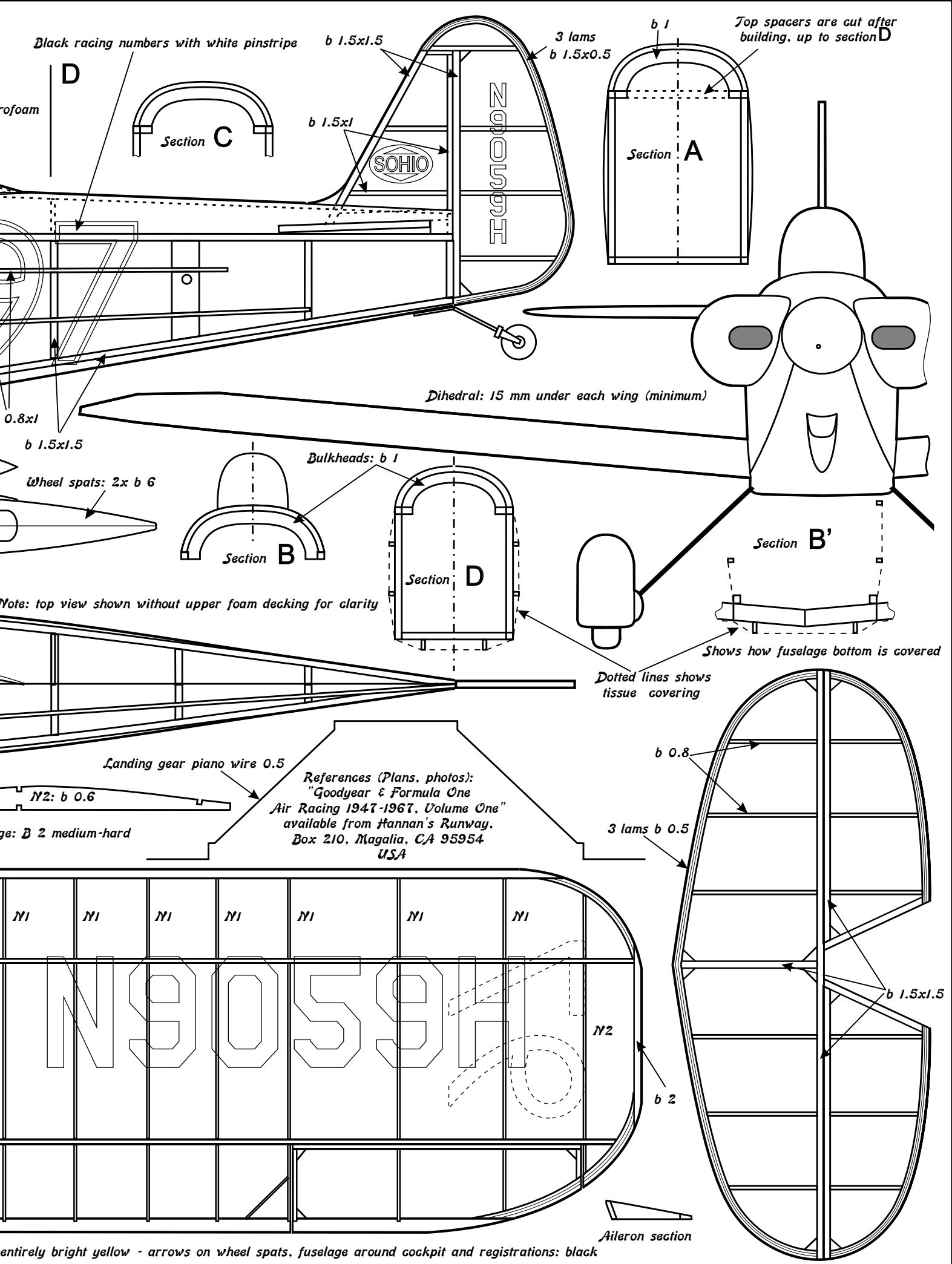
N1

4 laminations b 0.8

Black numbers (without pinstripe)

b 3x1.5

Colors: entirely b



Black racing numbers with white pinstripe

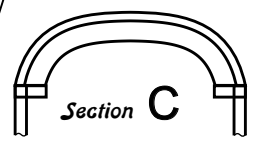
b 1.5x1.5

3 lams
b 1.5x0.5

Top spacers are cut after building, up to section D

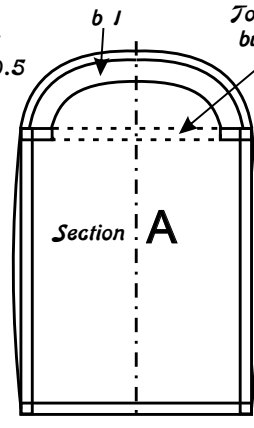
foam

D



Section C

b 1.5x1



Section A

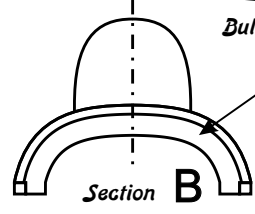
b 1

Dihedral: 15 mm under each wing (minimum)

0.8x1

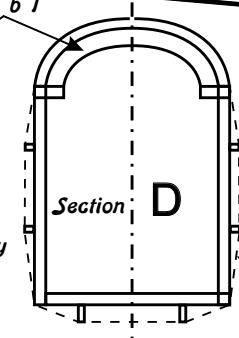
b 1.5x1.5

Wheel spats: 2x b 6



Section B

Bulkheads: b 1



Section D

Note: top view shown without upper foam decking for clarity

Section B'

Shows how fuselage bottom is covered

Dotted lines shows tissue covering

Landing gear piano wire 0.5

N2: b 0.6

ge: B 2 medium-hard

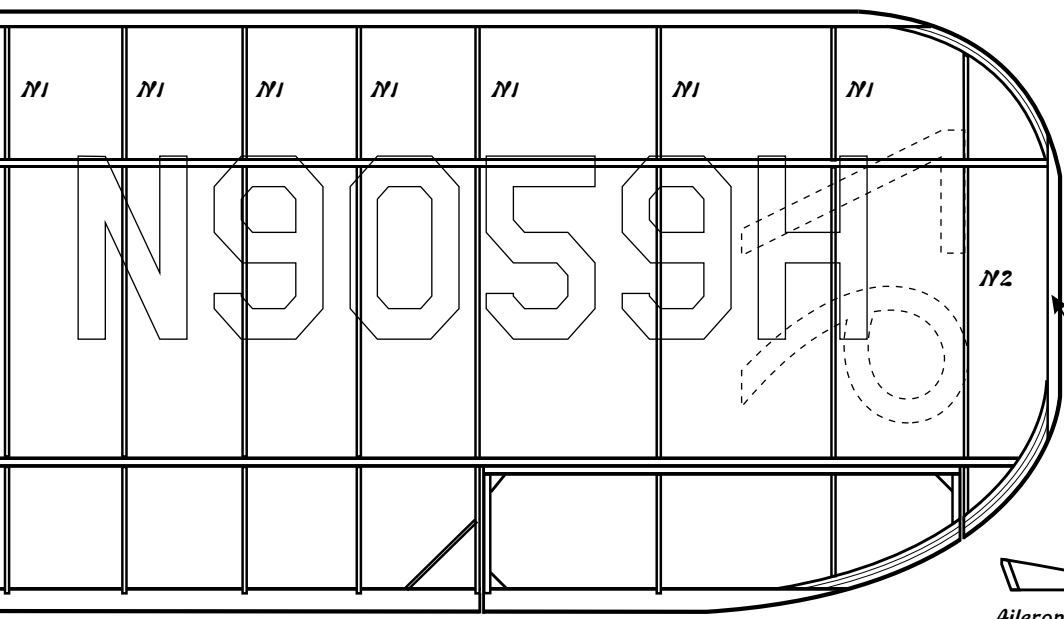
References (Plans, photos):
"Goodyear & Formula One
Air Racing 1947-1967, Volume One"
available from Hannan's Runway,
Box 210, Magalia, CA 95954
USA

b 0.8

3 lams b 0.5

b 1.5x1.5

b 2



N2

Aileron section

entirely bright yellow - arrows on wheel spats, fuselage around cockpit and registrations: black
plan may not be used for commercial purposes