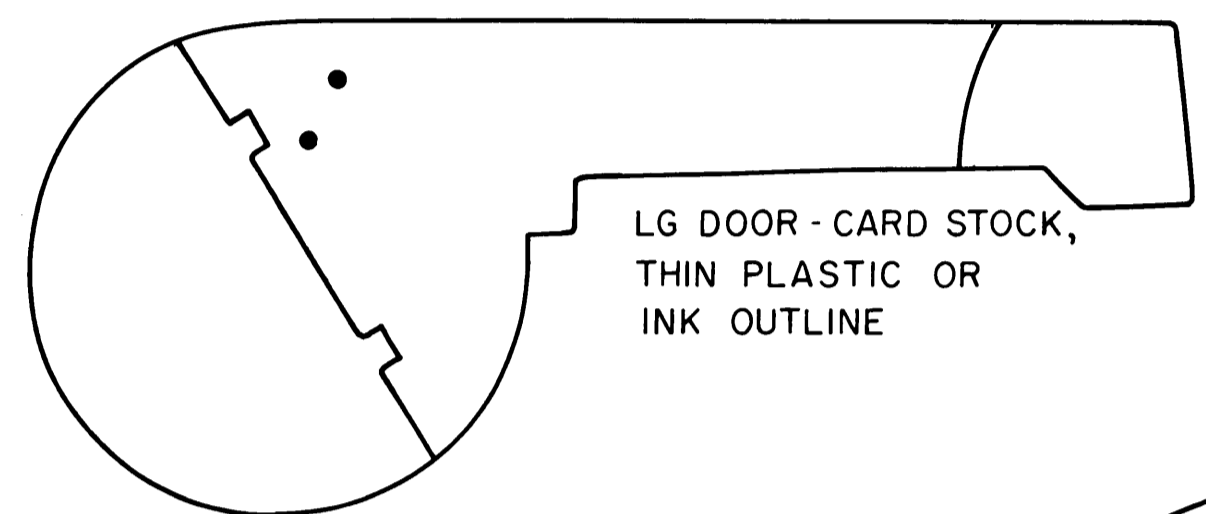
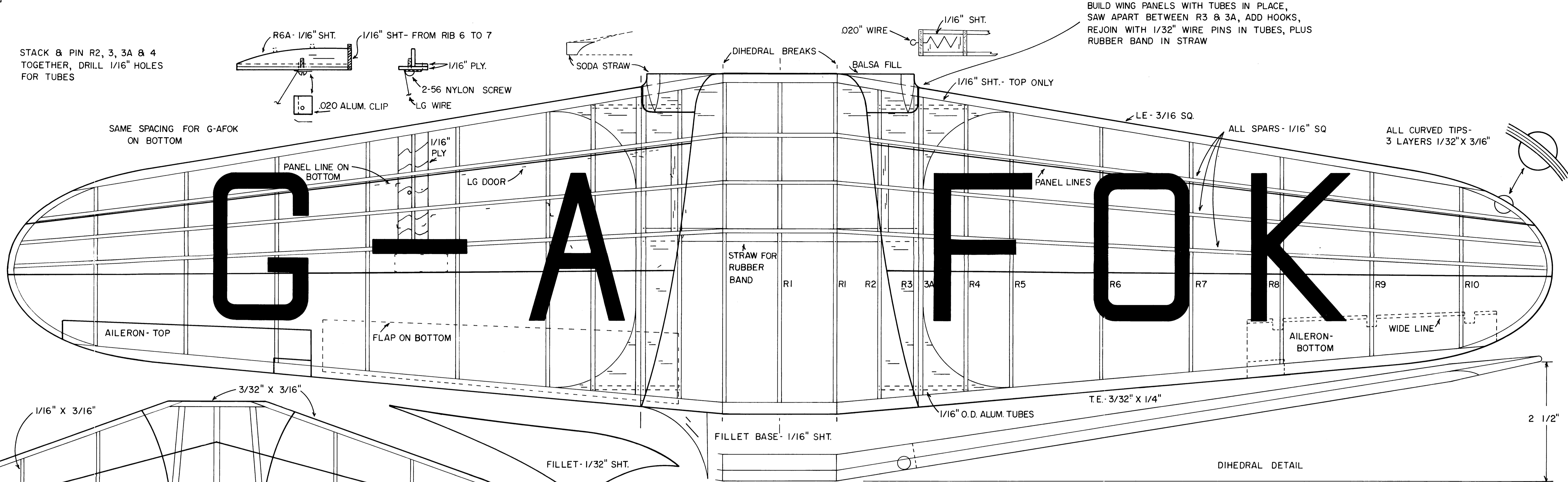


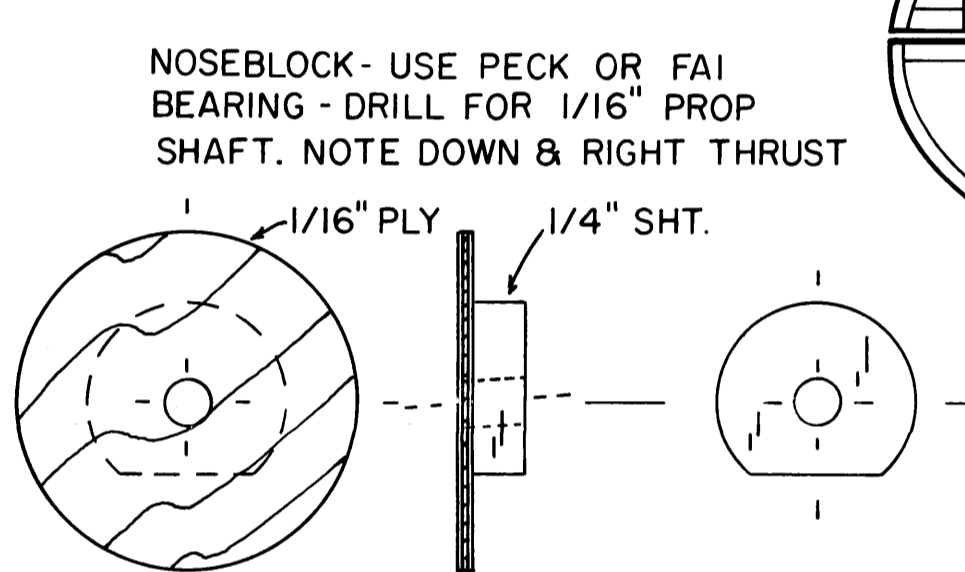
RIBS-1/16" SHT, EXCEPT 3 & 3A
 STACK & PIN R2, 3, 3A & 4 TOGETHER, DRILL 1/16" HOLES FOR TUBES



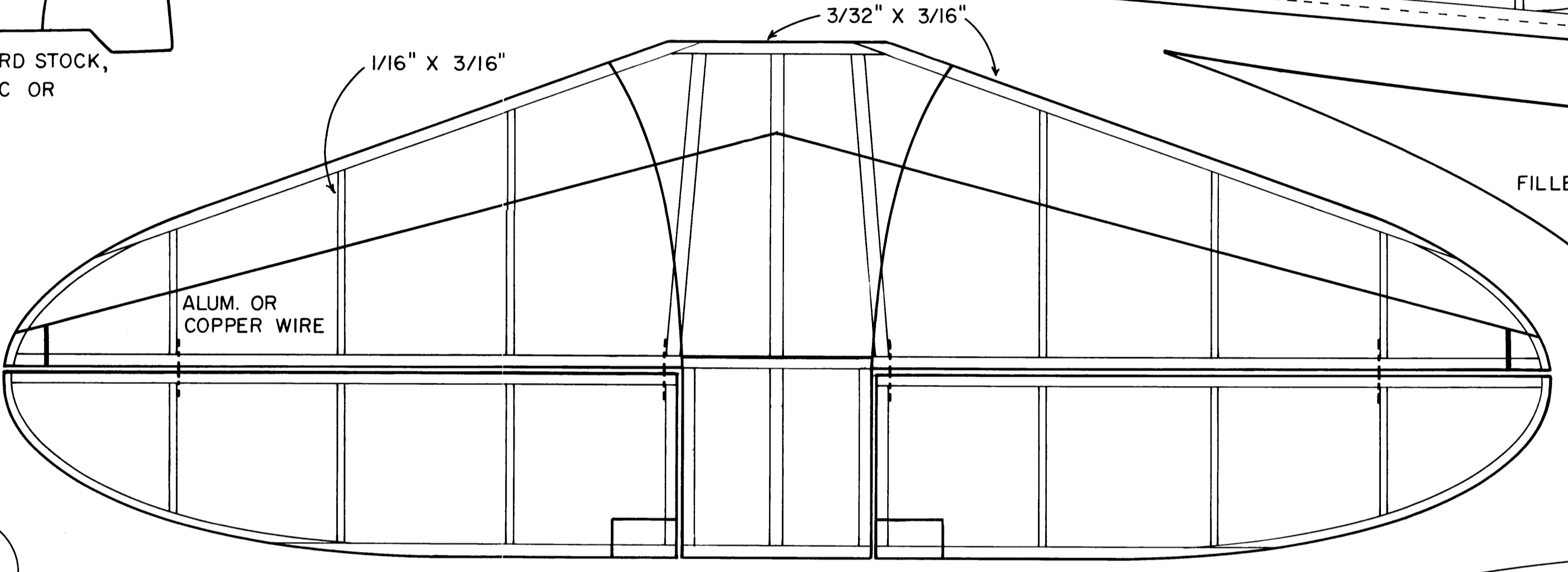
LG DOOR - CARD STOCK, THIN PLASTIC OR INK OUTLINE



BUILD WING PANELS WITH TUBES IN PLACE, SAW APART BETWEEN R3 & 3A, ADD HOOKS, REJOIN WITH 1/32" WIRE PINS IN TUBES, PLUS RUBBER BAND IN STRAW



NOSEBLOCK - USE PECK OR FA1 BEARING - DRILL FOR 1/16" PROP SHAFT. NOTE DOWN & RIGHT THRUST



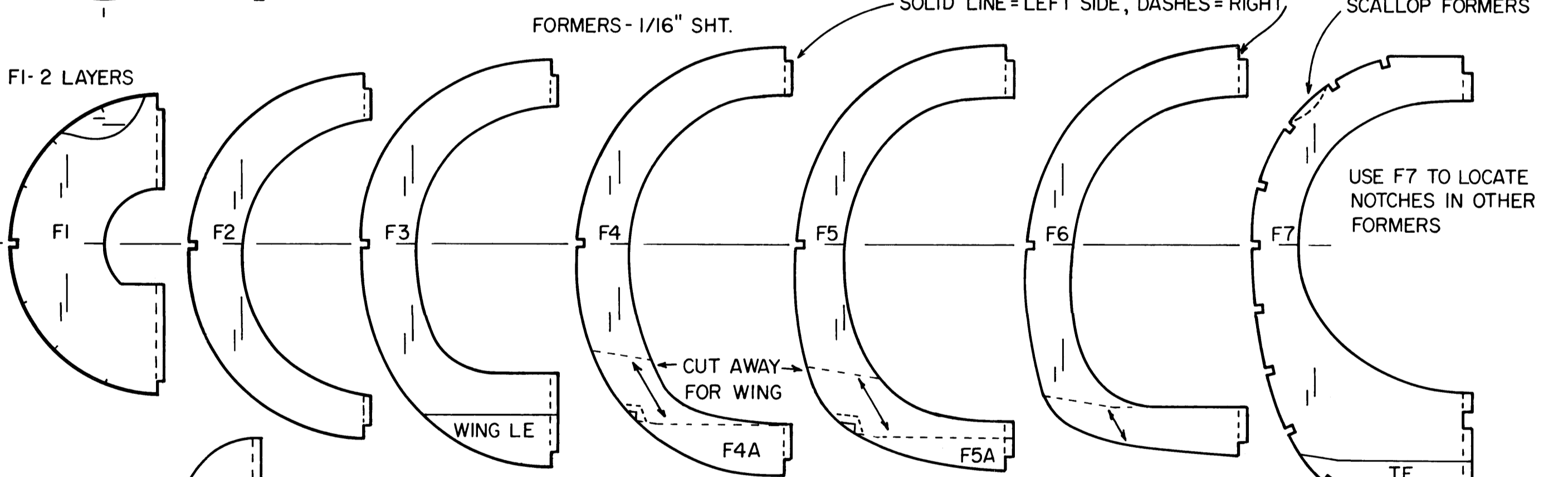
1/16" X 3/16"

3/32" X 3/16"

FILLET - 1/32" SHT.

1940 NAPIER-HESTON JA5 RACER
 1" = 1' RUBBER SCALE
 A. A. LIDBERG
 model plan service
 614 E. FORDHAM
 TEMPE, ARIZONA 85283

COLORS - SILVER DOPE (OR GREY TISSUE)
 - BLACK MARKINGS



F1 - 2 LAYERS

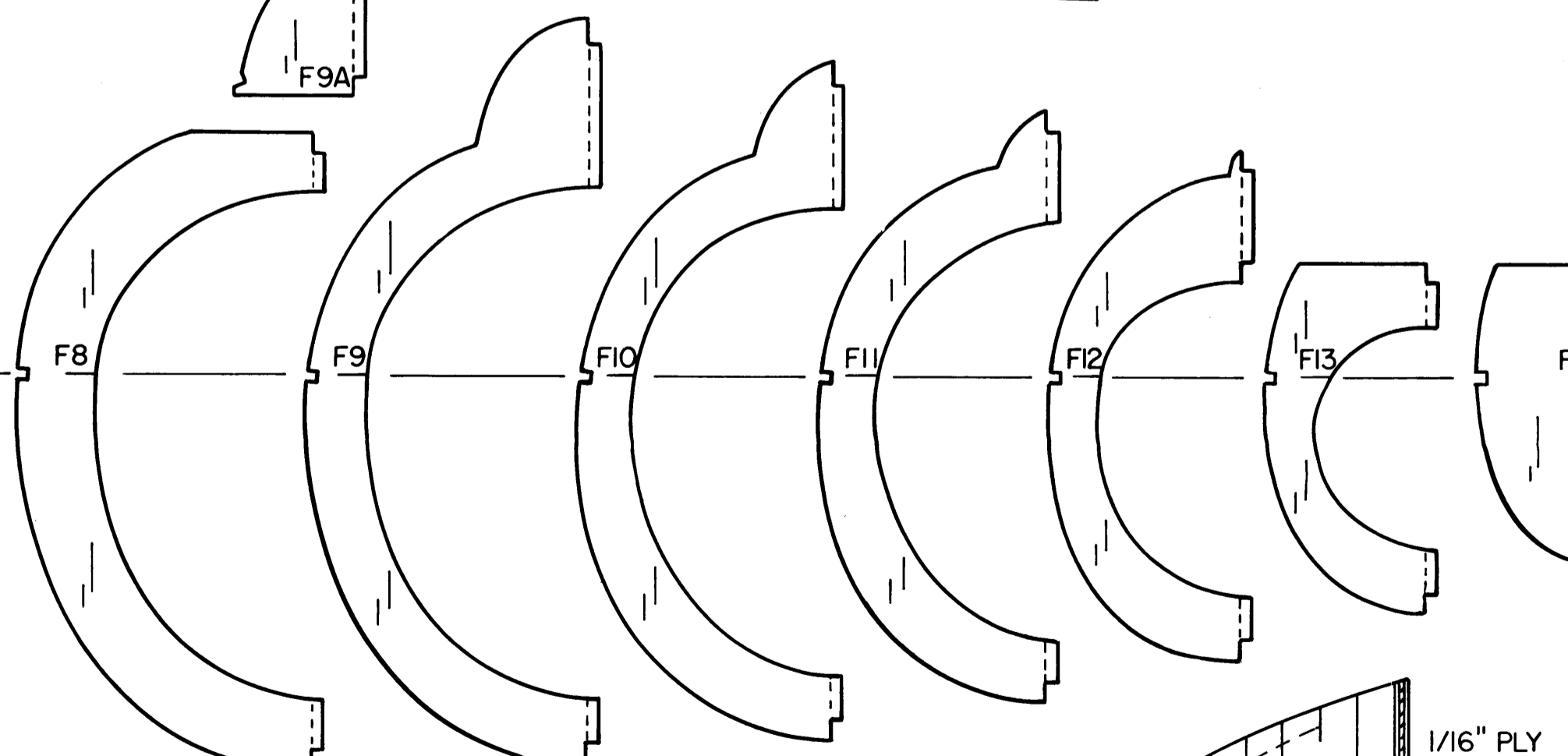
FORMERS - 1/16" SHT.

SOLID LINE = LEFT SIDE, DASHES = RIGHT

SCALLOP FORMERS

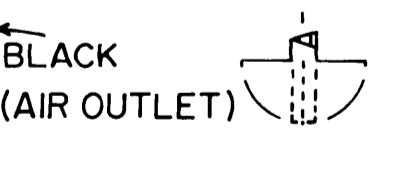
USE F7 TO LOCATE NOTCHES IN OTHER FORMERS

CUT AWAY FOR WING



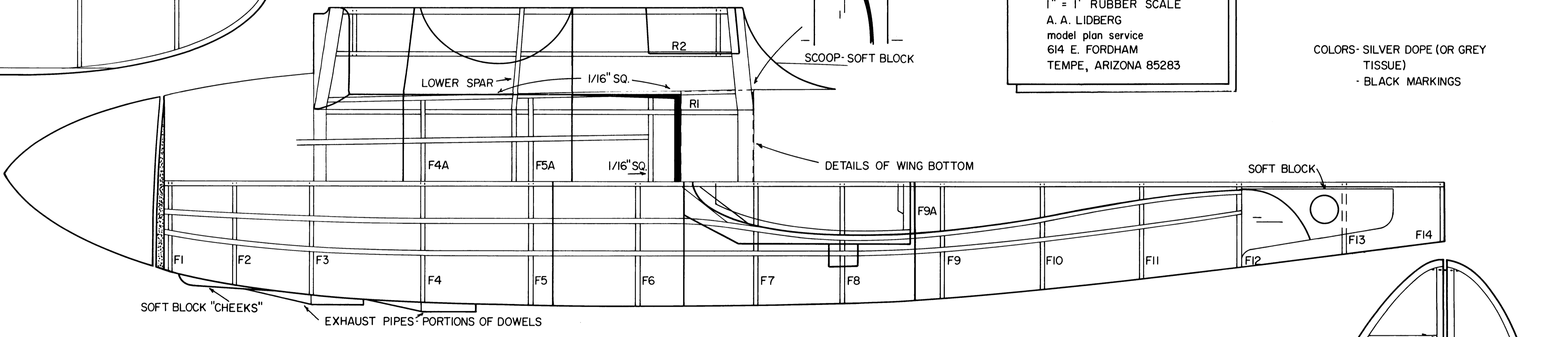
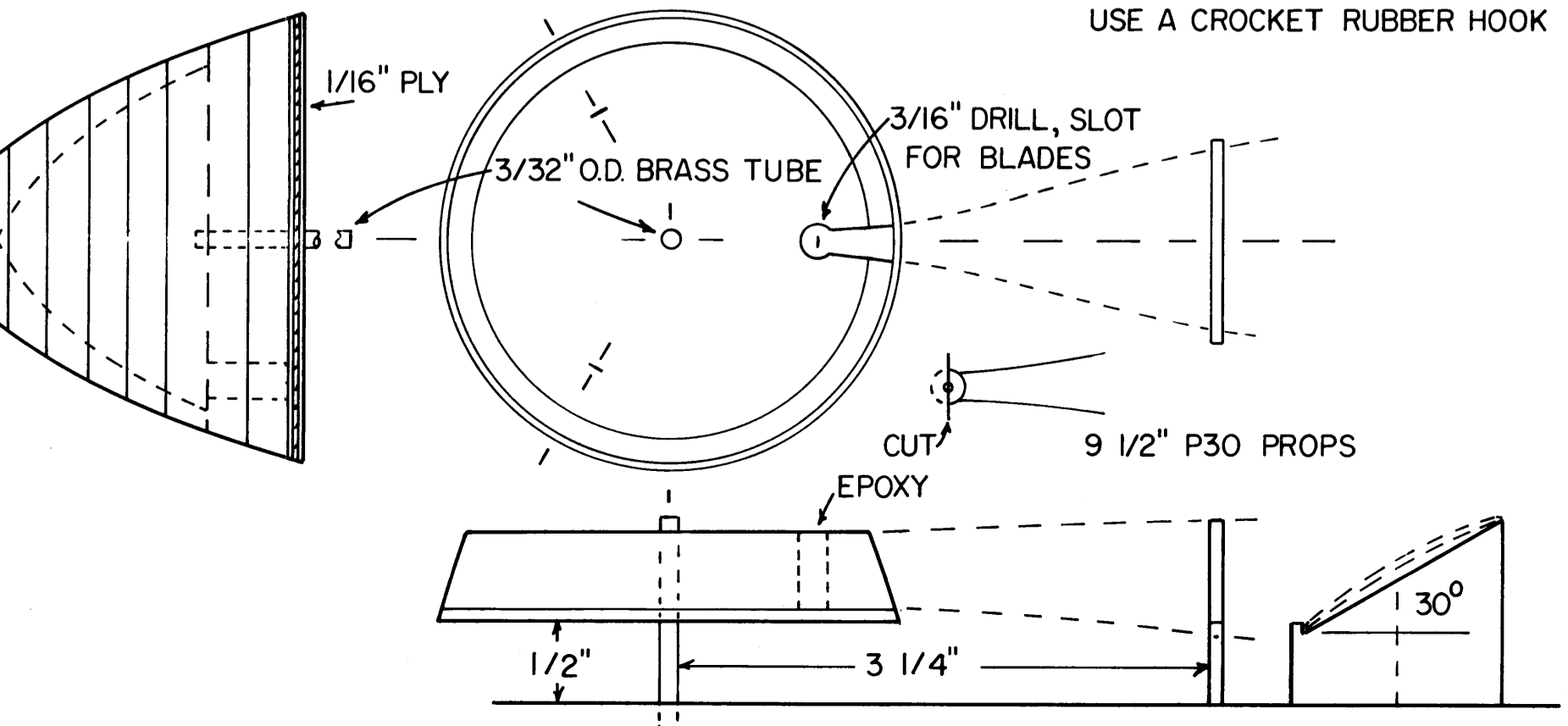
POWER = 4 LOOPS 1/8" FAI 24" LONG
 USE A WINDING TUBE! PROTECT THE FORMERS, STRINGERS, TISSUE, MARKINGS, AND YOUR LABOR.

FREEWHEEL - 1/8" O.D. BRASS TUBE



PROP SHAFT - 1/16" WIRE
 USE A CROCKET RUBBER HOOK

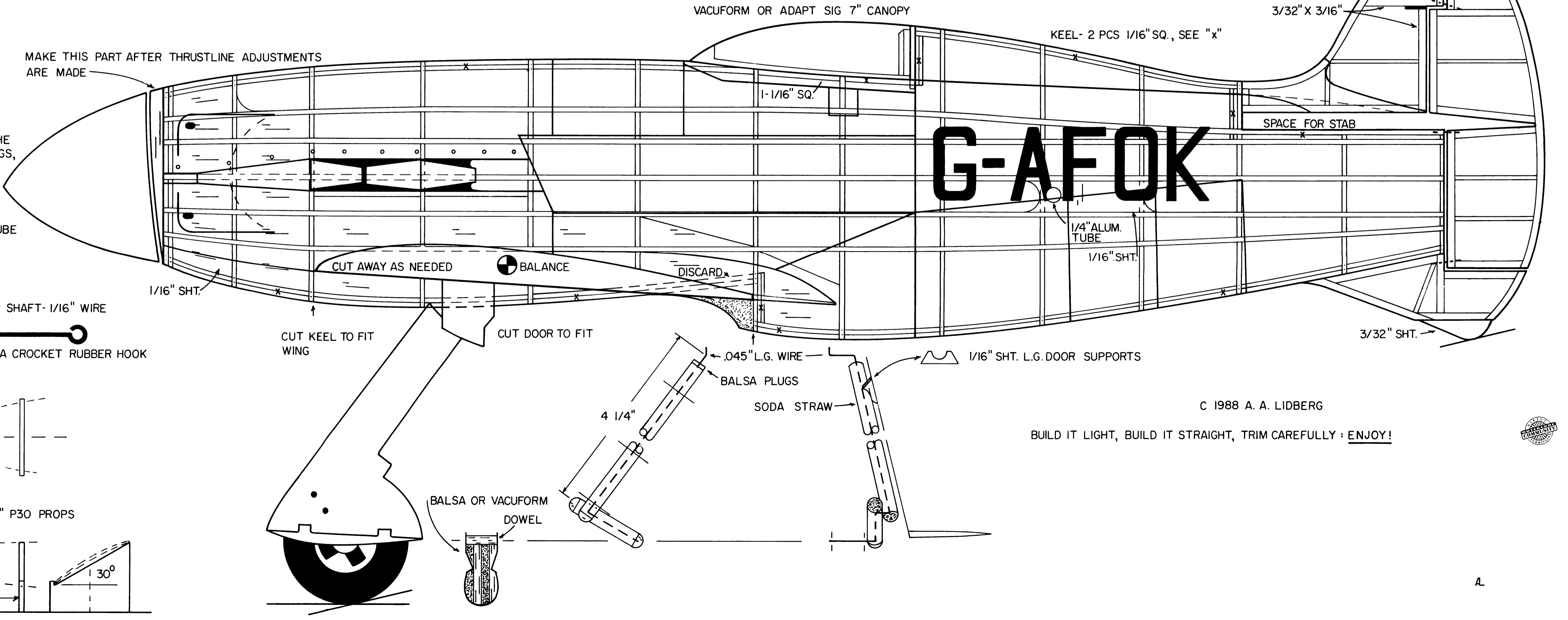
SPINNER - LAMINATE & HOLLOW



SCOOP - SOFT BLOCK

DETAILS OF WING BOTTOM

SOFT BLOCK "CHEEKS"
 EXHAUST PIPES - PORTIONS OF DOWELS



MAKE THIS PART AFTER THRUSTLINE ADJUSTMENTS ARE MADE

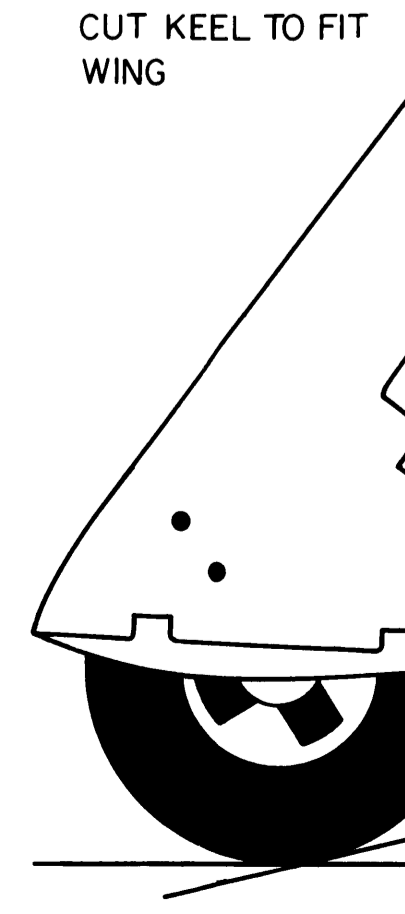
VACUFORM OR ADAPT SIG 7" CANOPY

KEEL - 2 PCS 1/16" SQ., SEE "x"

3/32" X 3/16"

SPACE FOR STAB

G-AFOK



BALSA OR VACUFORM DOWEL

CUT KEEL TO FIT WING

CUT DOOR TO FIT

4 1/4"

BALSA PLUGS

SODA STRAW

1/16" SHT. L.G. DOOR SUPPORTS

C 1988 A. A. LIDBERG
 BUILD IT LIGHT, BUILD IT STRAIGHT, TRIM CAREFULLY - ENJOY!