

LEFT WING

RIGHT WING

FUSELAGE TOP VIEW

FUSELAGE SIDE VIEW

THE "OBSERVER"

"BOSTONIAN" BY RANDY RANDOLPH
 INK TRACING: DON MCGOVERN
 RUBBER POWERED -
 15-7/8" WINGSPAN

SCALE

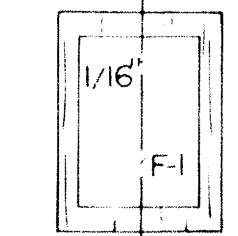
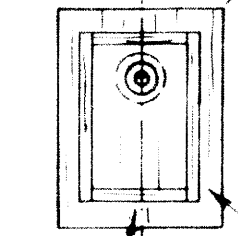


1/32" SHEET TIP CAP
 BLOCK UP TIP RIB 1/2" FOR DIHEDRAL ANGLE.

1/32" SHEET END TIP CAP

COVER WITH JAP TISSUE. SHRINK WITH FINE SPRAY OF WATER, ONE COAT OF THIN DOPE.

NOSE BLOCK



WINDSHIELD IS CLEAR MONOKOTE

PECK THRUST BEARING

1/16" SHEET

6" DIA. PLASTIC PROP

BOND ON ER FAIRING

1/16" SHEET WHEELS WITH GLASS BEAD GLUED TO INSIDE HUB

BUILD 2 FUSELAGE SIDES

.020 DIA. MUSIC WIRE LANDING GEAR

DIHEDRAL BREAK

DIHEDRAL BREAK

1/16" SQ. L.E. SET ON EDGE

BLOCK UP TIP RIB 1/2" FOR DIHEDRAL ANGLE.

LANDING GEAR

AFT CABIN

NOTE 1/16" SQ. DOUBLERS AT THIS AFT CABIN SECTION.

GLUE RUDDER TO TAIL POST ONLY
 STABILIZER
 1/16" SHIM

.015 DIA. MUSIC WIRE SKID

STABILIZER

1/16" SQ. TE

1/16"

1/32" END CAP
 1/2" DIHEDRAL

RUDDER FIN

1/16" SQ.

1/32" x 1/16"

1/16" SQ. LONGERONS

1/16" SHEET Balsa

POWER: 22" LOOP OF .068 RUBBER

FUSELAGE OUTLINE: 1/16" SQ. Balsa

1/16" DIA ALUMINUM TUBING REAR MOTOR ANCHOR

1/16" SQ. LONGERON

1/16" SQ.

1/32" SHEET BOTTOM ONLY

1/16" DIA. ALUMINUM TUBING RUBBER ANCHOR

1/16" SQ.

1/16" SQ. TE

1/16" SQ SPARS

1/32" SHEET RIBS

1/16" RIB

1/16" RIB

1/16" SQ. SPARS