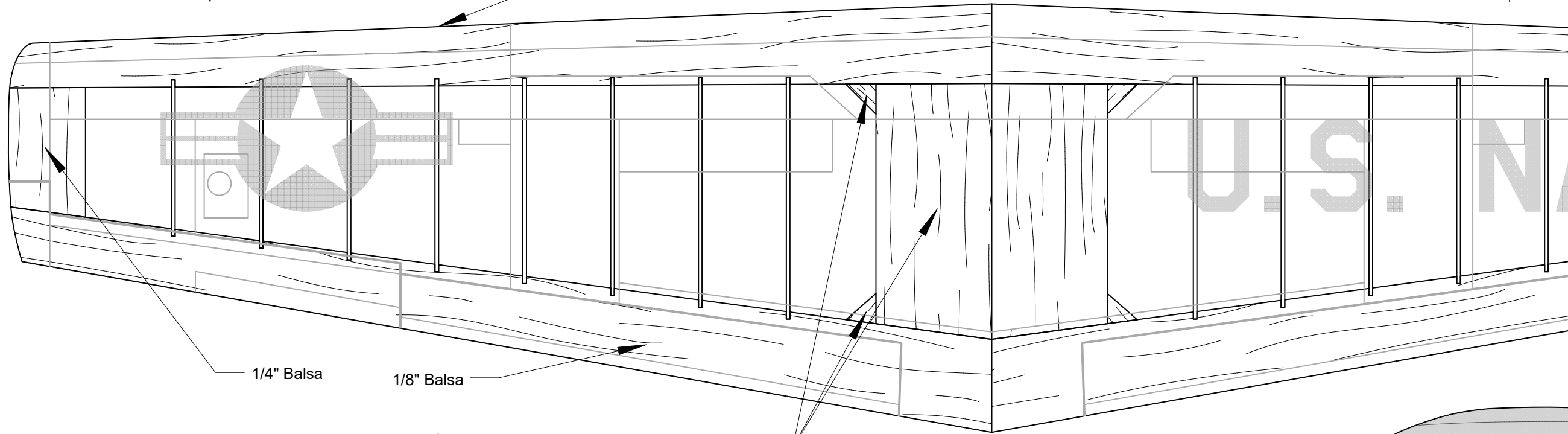


1 1/8" Dihedral under each tip

1/4" Balsa

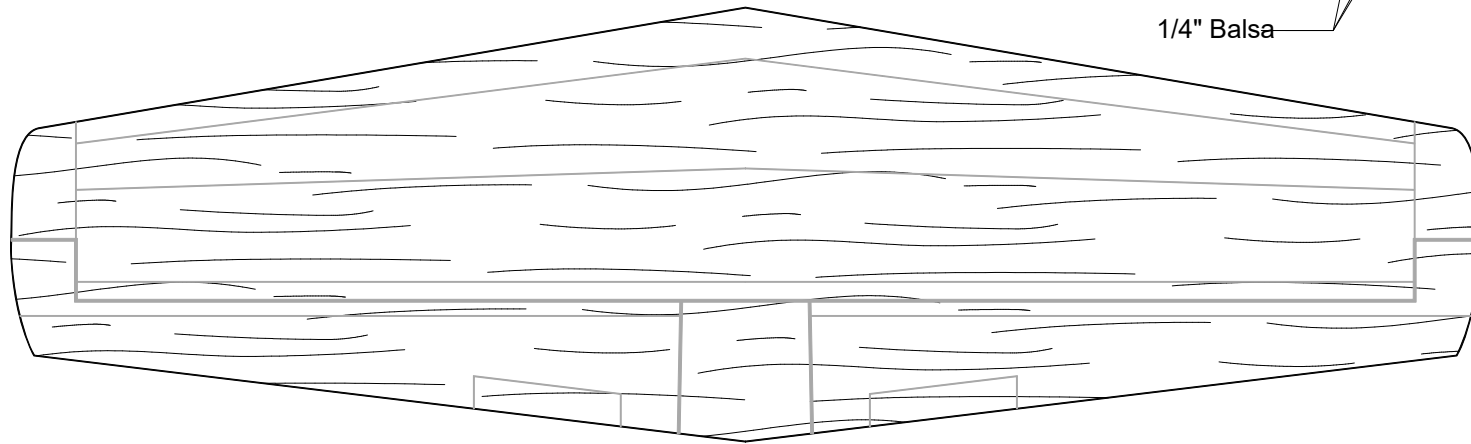


1/4" Balsa

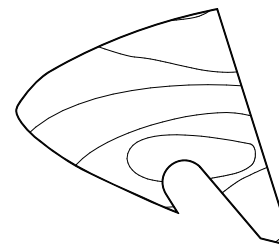
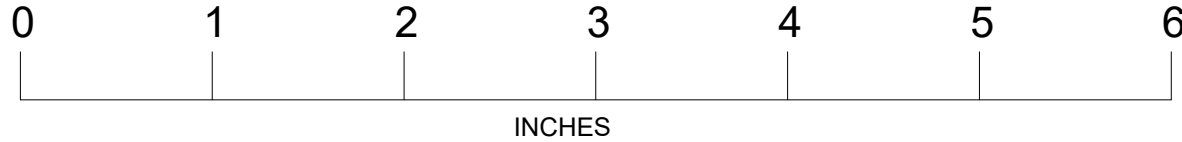
1/8" Balsa

1/4" Balsa

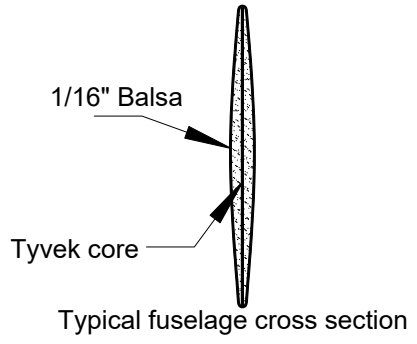
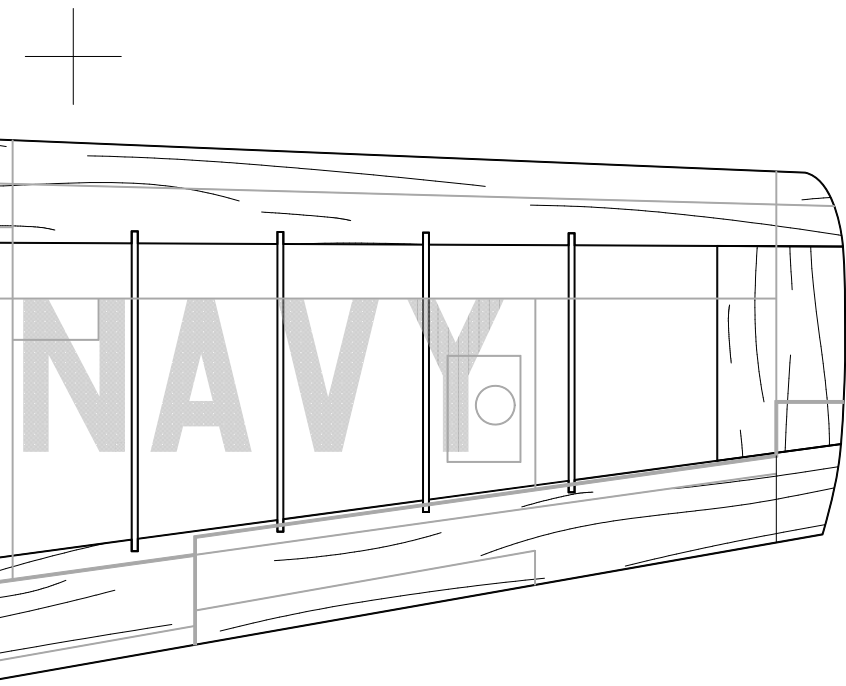
Wing ribs are firm 1/32" balsa



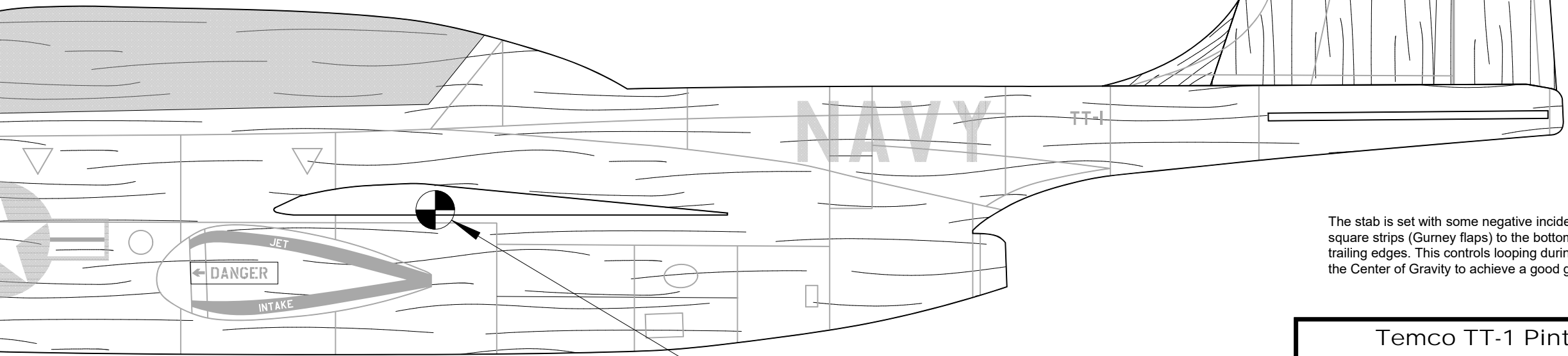
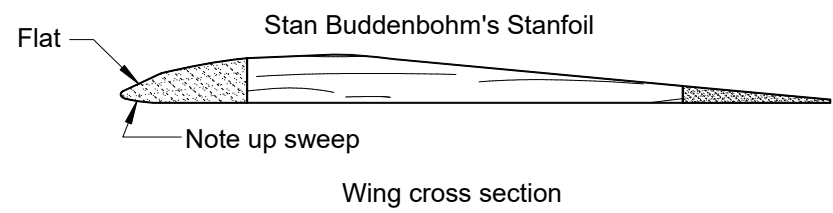
Stab is 1/16" balsa



Make two nose doublers from 1/64" plywood. Glue a doubler to each side of the fuselage nose.



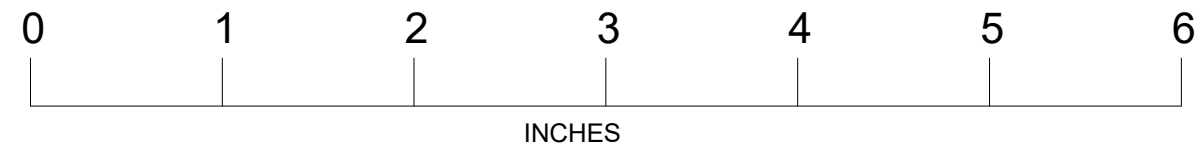
Fin is 1/16" balsa



The stab is set with some negative incidence. Glue 1/16" square strips (Gurney flaps) to the bottom of the elevator trailing edges. This controls looping during the launch. Adjust the Center of Gravity to achieve a good glide.

Fuselage is made from two laminations of 1/16" balsa with a layer of Tyvek between the laminations

CG is 1 5/16" aft of the wing root leading edge



Temco TT-1 Pinto
Jet Cat
17" Wing Span
Designed by Paul Bradley
January 2021

