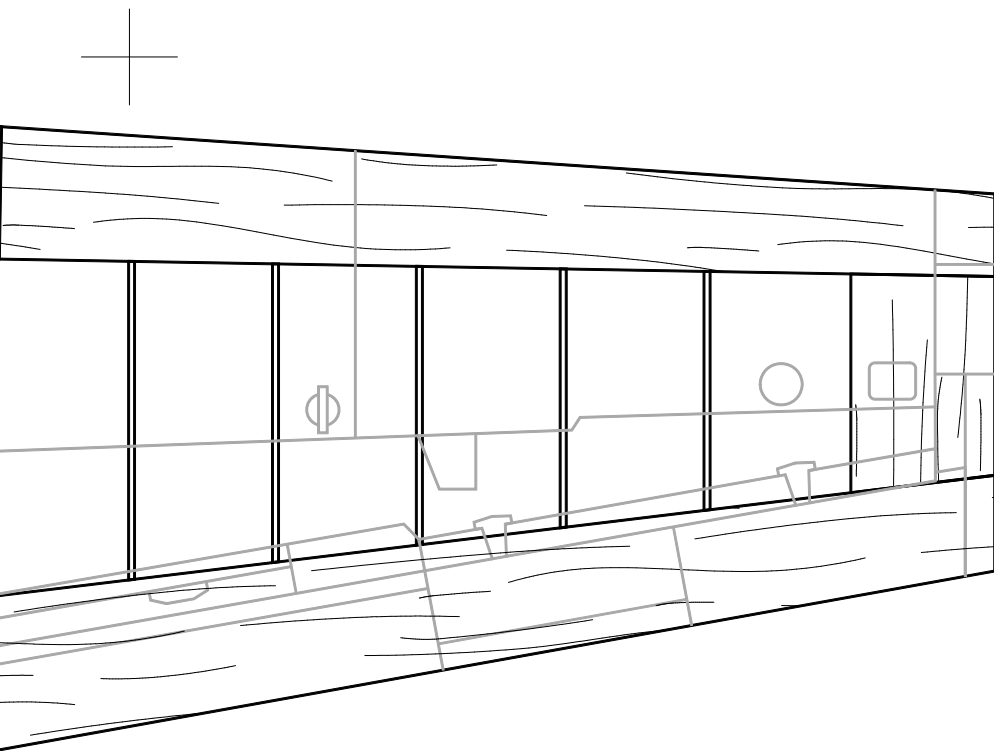
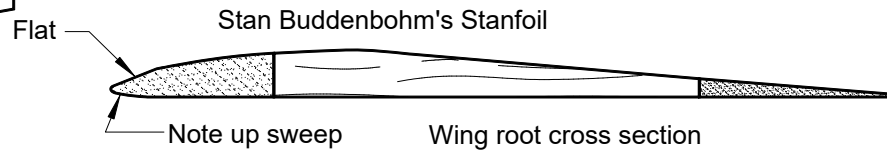
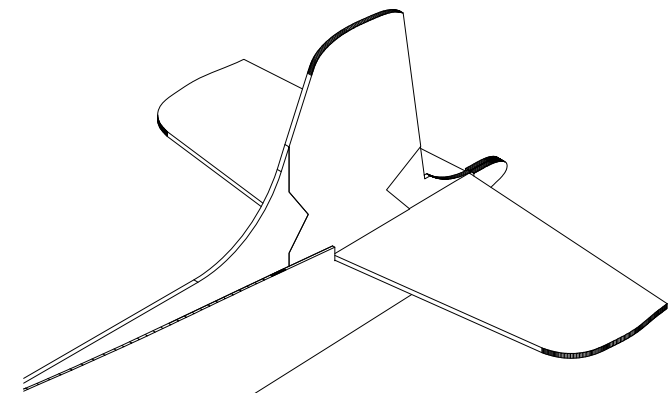
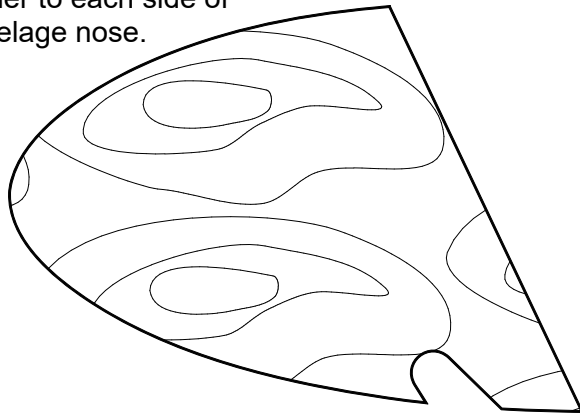


Make two tanks from 2 laminations each of 1/32" balsa with Tyvek in the middle. The lamination facing the fuselage has the wing tip profile cut out.



Make two nose doublers from 1/64" plywood. Glue a doubler to each side of the fuselage nose.



Stan Buddenbohm's Stanfoil

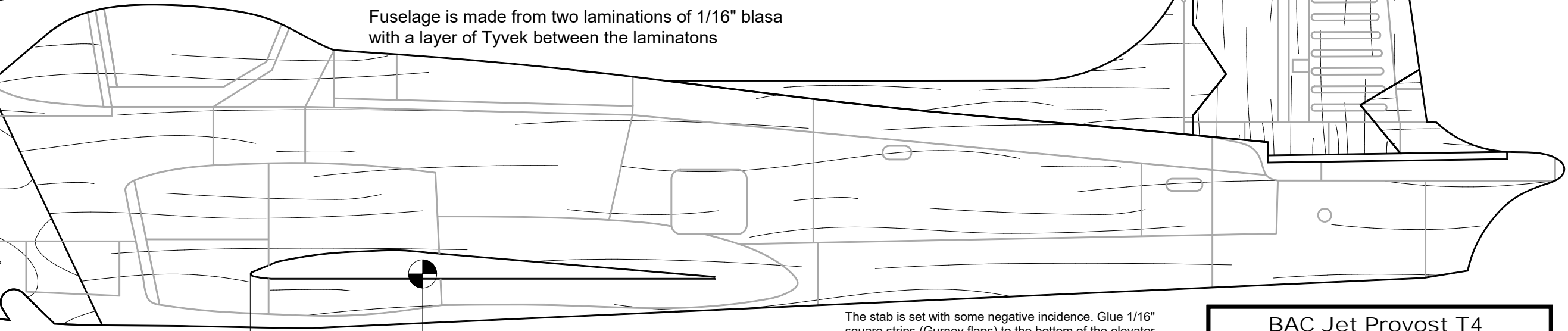
Flat

Note up sweep

Wing root cross section

Fin is 1/16" balsa

Fuselage is made from two laminations of 1/16" balsa with a layer of Tyvek between the laminations



The stab is set with some negative incidence. Glue 1/16" square strips (Gurney flaps) to the bottom of the elevator trailing edges. This controls looping during the launch. Adjust the elevators by bending to achieve a good glide.

1 1/2"

0 1 2 3 4 5 6

INCHES

BAC Jet Provost T4 Jet Cat
17" Wing Span
Designed by Paul Bradley
September 2018