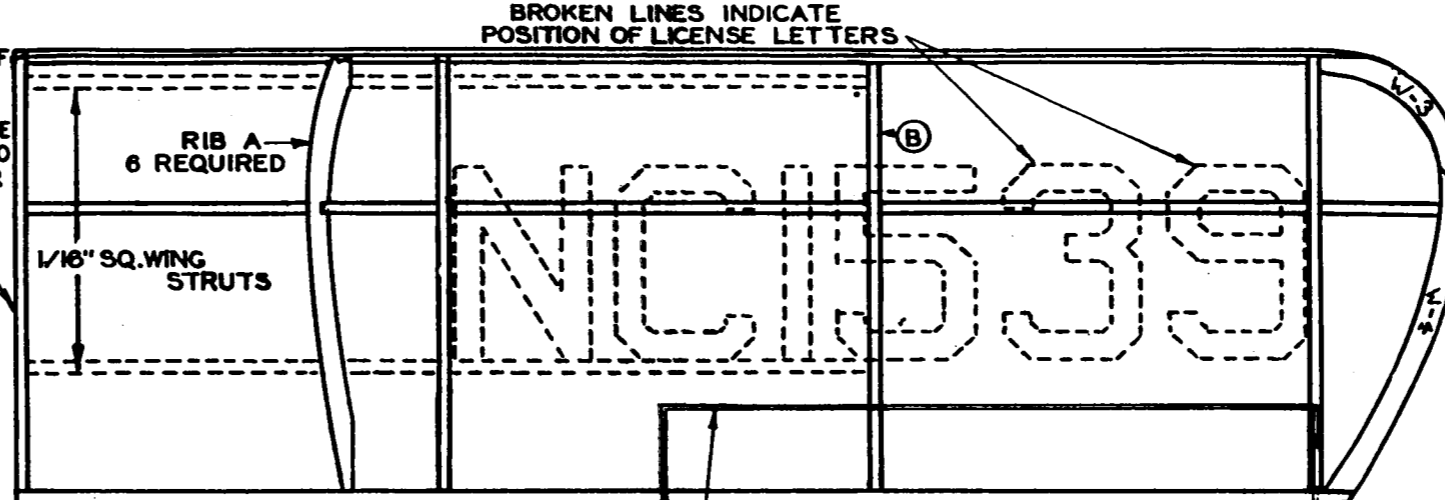


TILT TOP OF END RIB SLIGHTLY TOWARD THE WING TIP TO ALLOW FOR DIHEDRAL



STICK THREAD OR BORDERLINE OF PLAN TO TISSUE TO REPRESENT THE ALERON

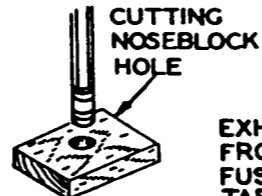
CONSTRUCT ELEVATOR IN ONE PIECE OVER PLAN AND COVER WITH TISSUE. THEN CEMENT IN ELEVATOR SLOT IN FUSELAGE IN POSITION INDICATED BY BROKEN LINES.

COLOR SCHEME

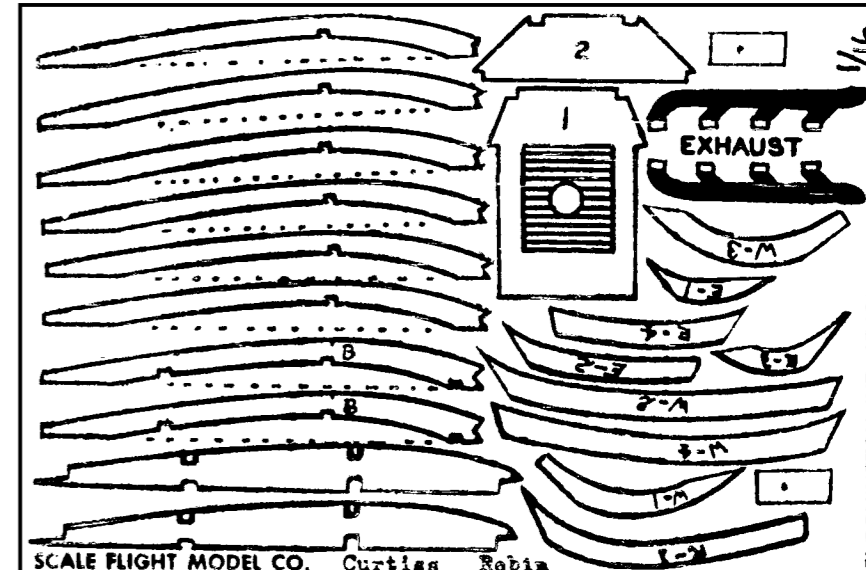
FUSELAGE ----- RED
WINGS & TAIL ASSEMBLY----- ORANGE

A RAZOR BLADE BROKEN TO THE SHAPE SHOWN AT LEFT MAKES A GOOD TOOL FOR CUTTING NOTCHES ETC.

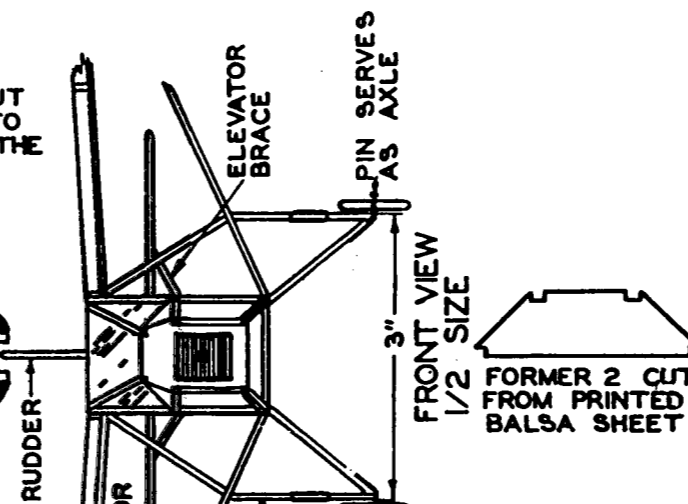
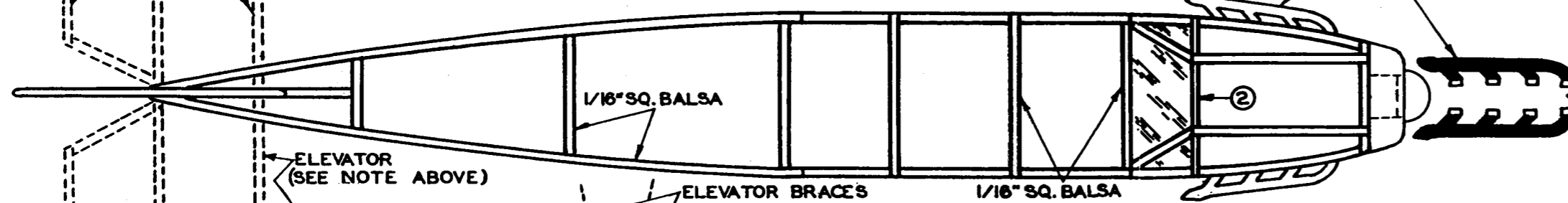
SPRAY FUSELAGE WITH WATER AFTER COVERING IT TO SHRINK THE TISSUE TAUT.



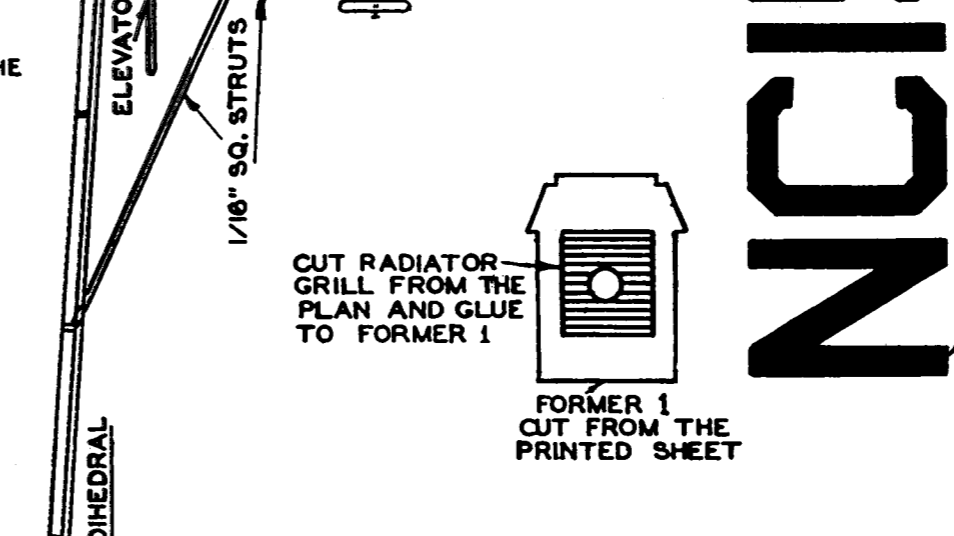
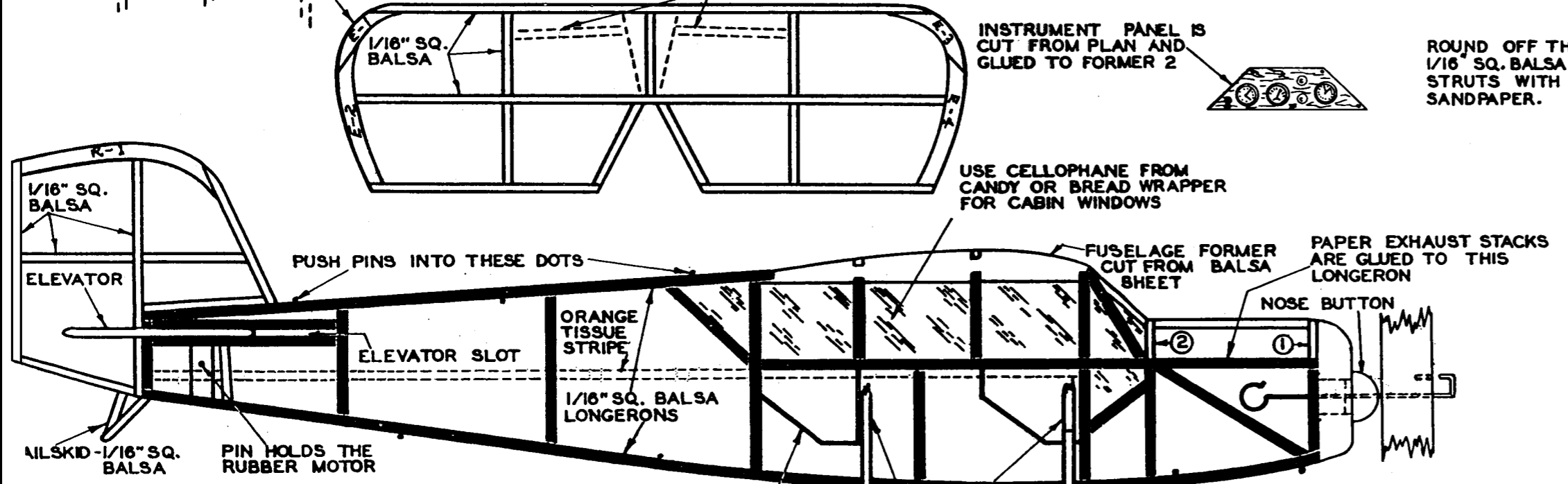
EXHAUST STACKS ARE CUT FROM PLAN AND GLUED TO FUSELAGE BY MEANS OF THE TABS



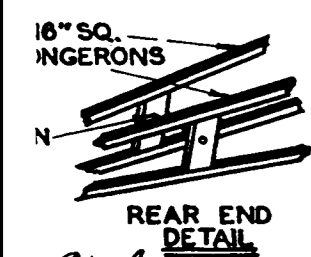
Note: Scale Flight was the early name for Comet Model Company.



NC1539
CUT LICENSE LETTERS FROM PLAN AND STICK TO TOP OF WING



APPLY CEMENT AROUND PROPELLER HUB TO REDUCE FRICTION BETWEEN NOSE BUTTON AND PROPELLER.



SHOCK ABSORBER DETAIL
WRAP PAPER AROUND STRUT AND GLUE AT POINTS OF CONTACT

CURTISS ROBIN
16" WINGSPAN 10-3/16" LENGTH
KIT NO. A24

Hank Petalik