

IL-2 STORMOVIK

17.

WINGSPAN 20 INCHES

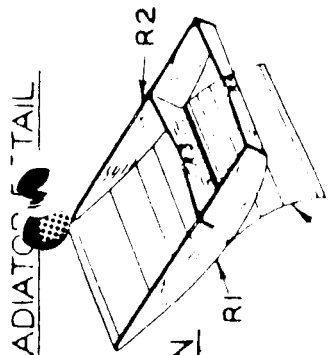
LENGTH 18-15/16 INCHES

KIT NO. L5

DRAWN BY *Pete Kumpf*

Copyright 1943 by CONET MODEL AIRPLANE & SUPPLY CO.

RADIATOR TAIL



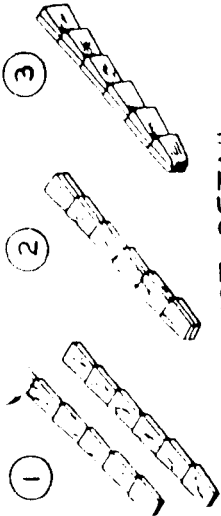
STIFF PAPER



THRUST BUTTON
DETAIL

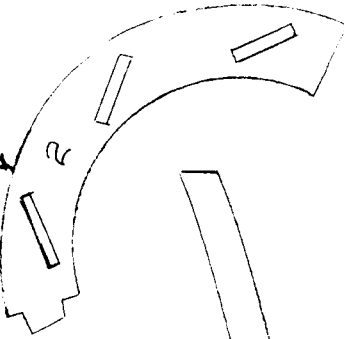


EXHAUST
DETAIL

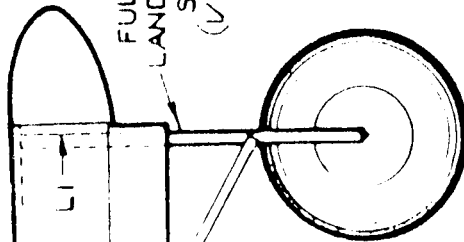


AIR SCOOP
DETAIL

PROP PATCH
FORMER



FULL SIZE
LANDING GEAR
STRUT
(1/16" DIA.)



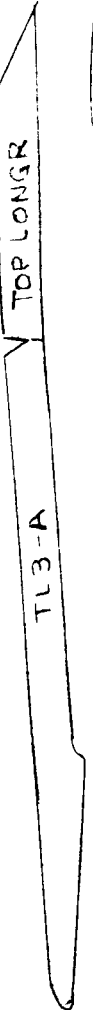
T-TAB

B11-B



TOP LONGR

TL3-A



TOP LONGR

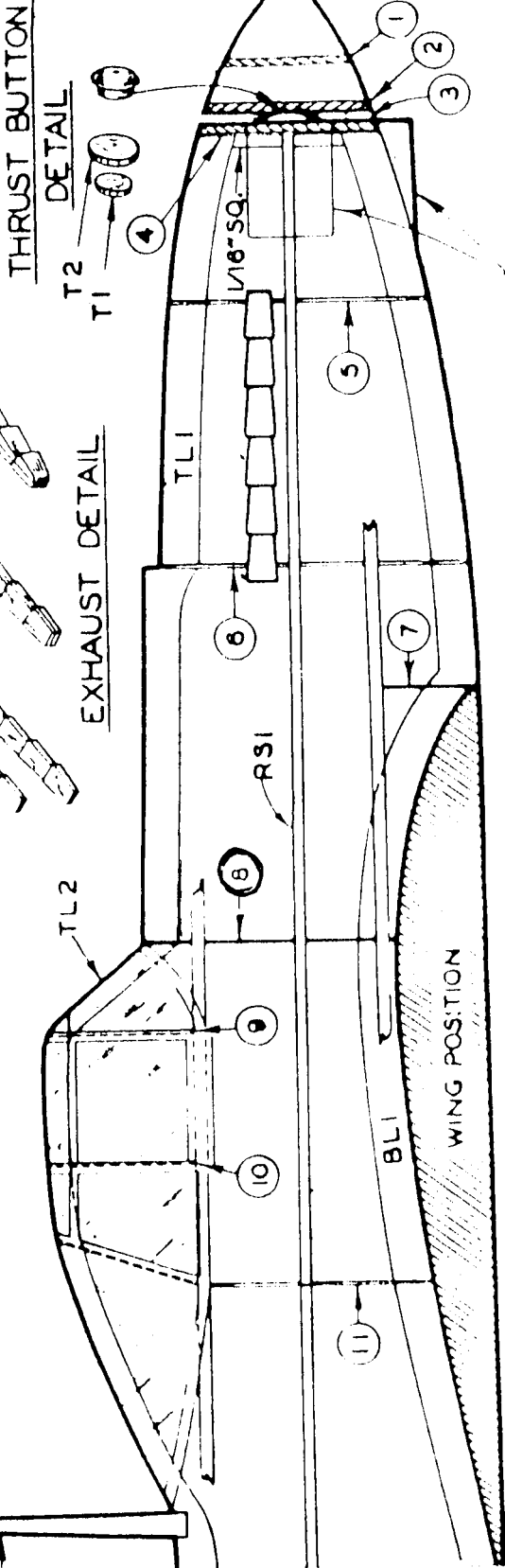
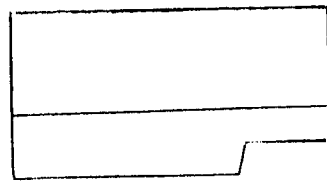
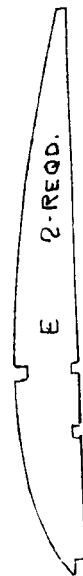
TL3-B

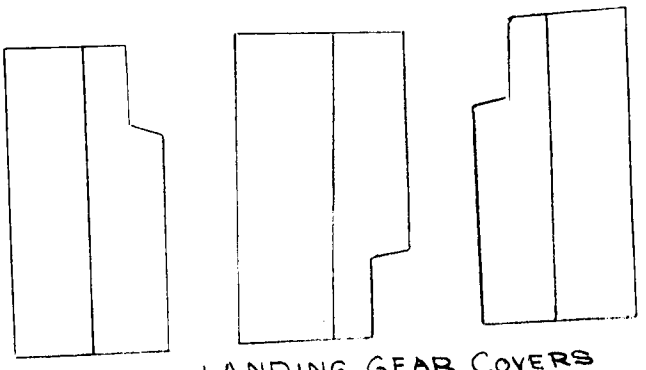
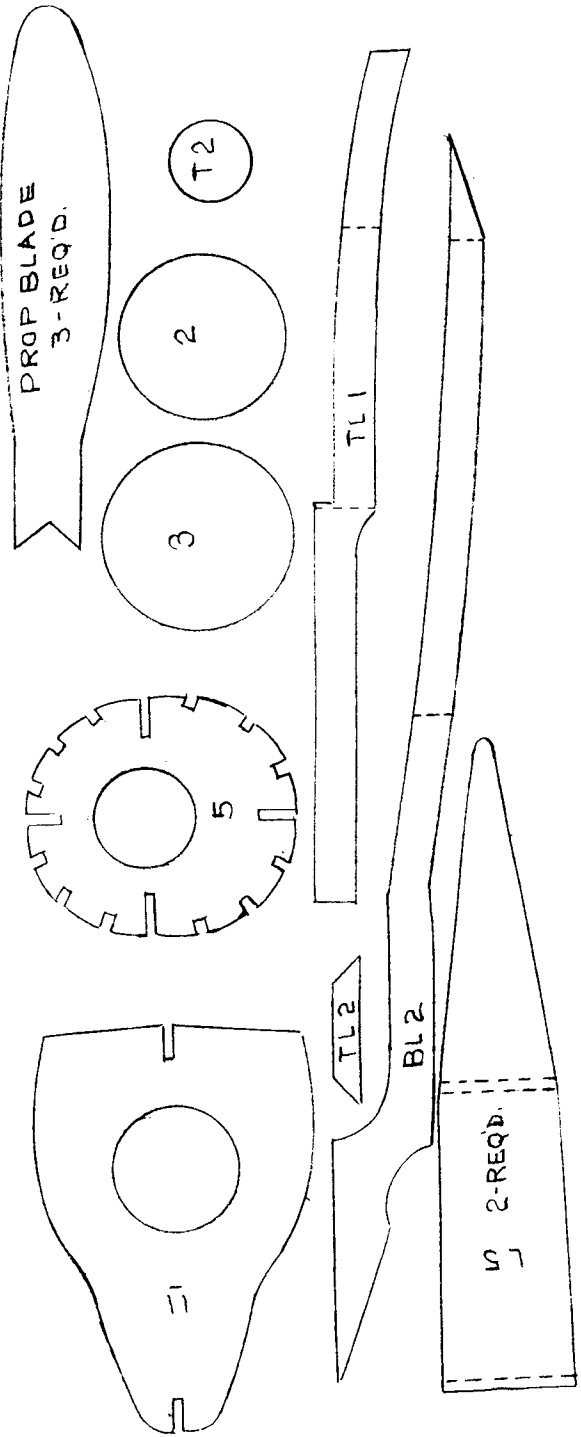
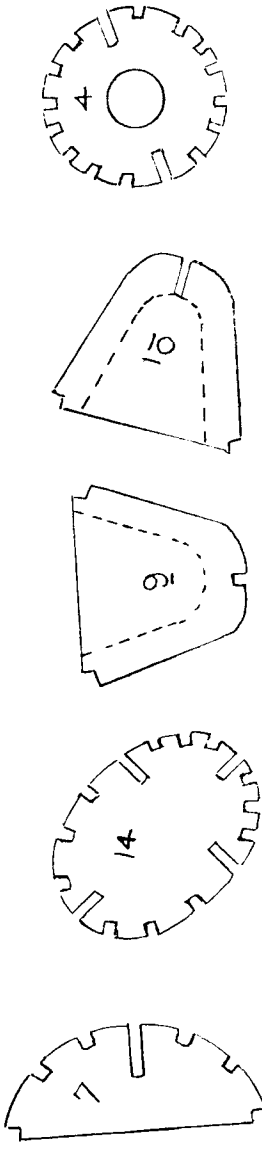
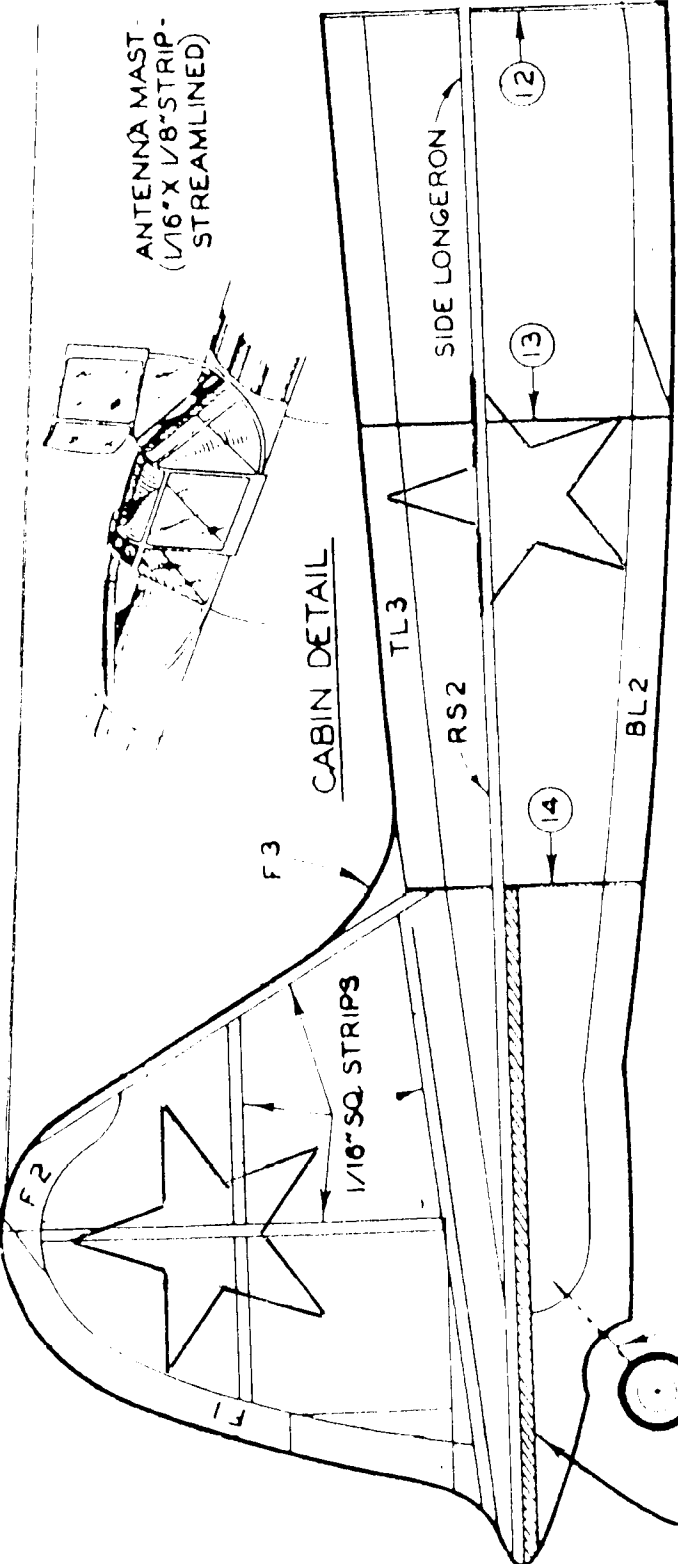
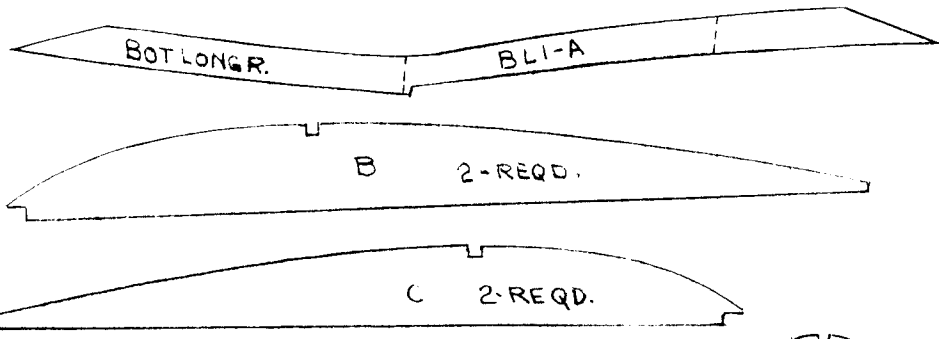


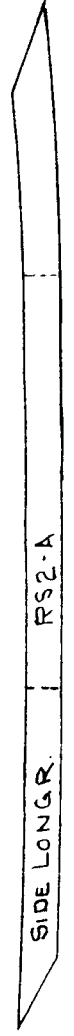
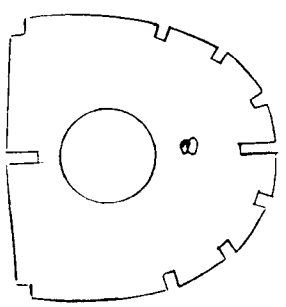
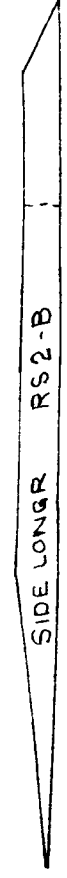
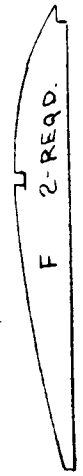
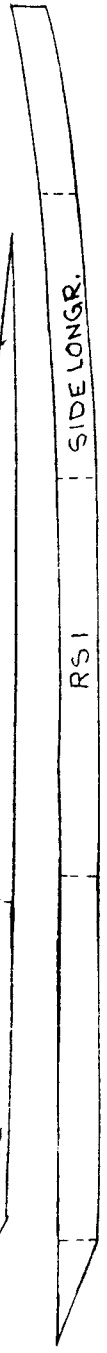
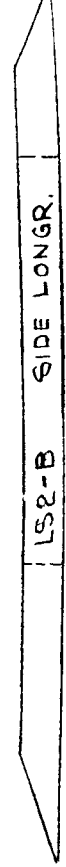
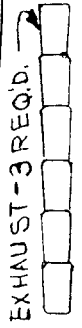
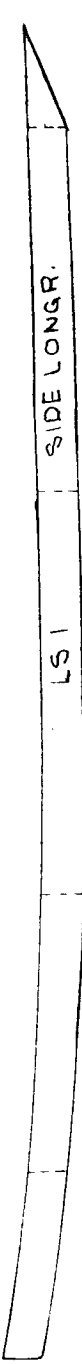
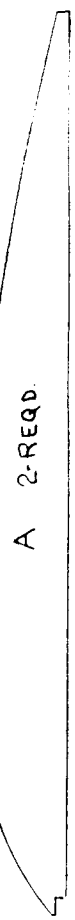
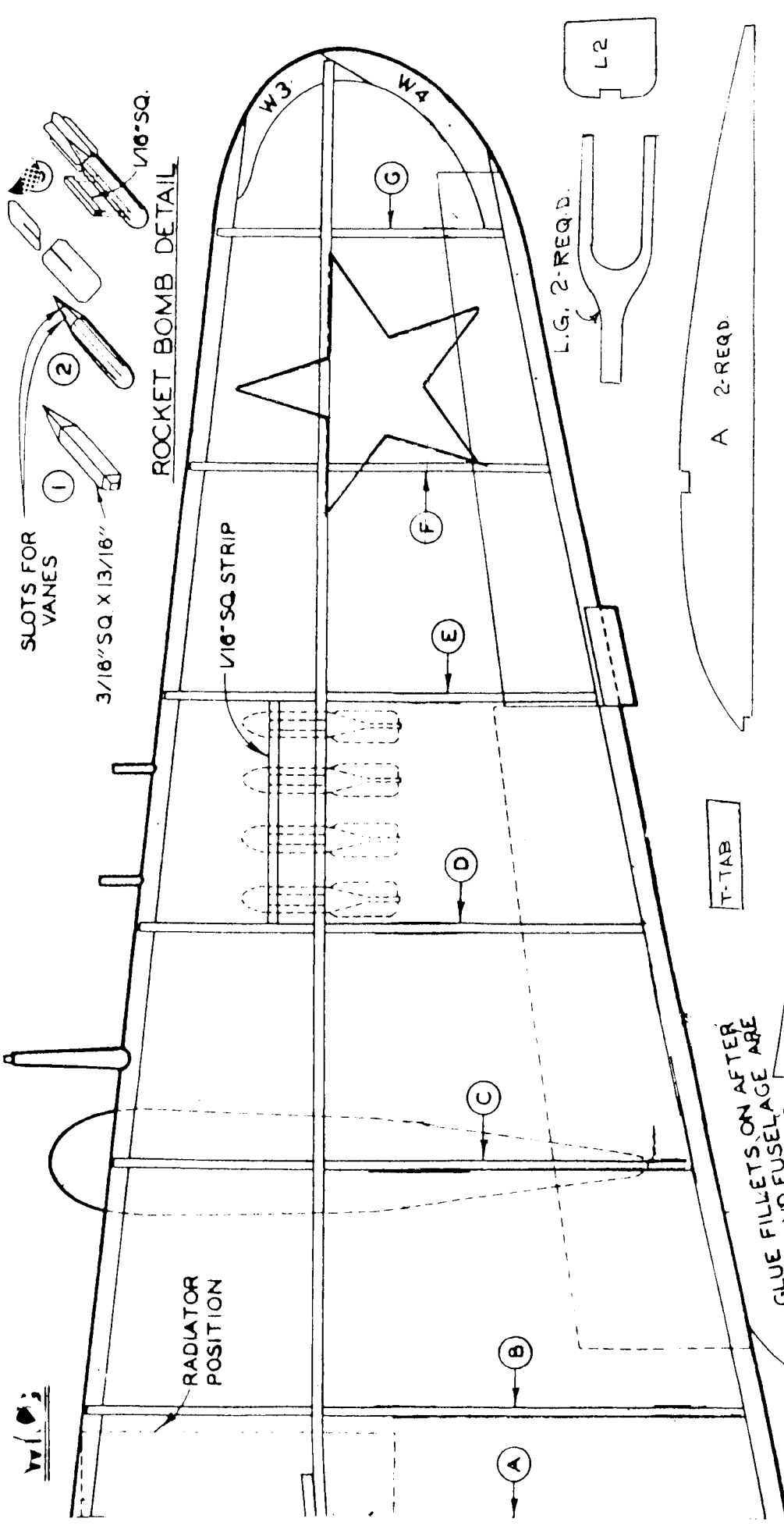
D 2-REQD.

E 2-REQD.

G 2-REQD.







GLUE FILLETS ON AFTER WING AND FUSELAGE ARE COVERED

