



CURTISS SWIFT

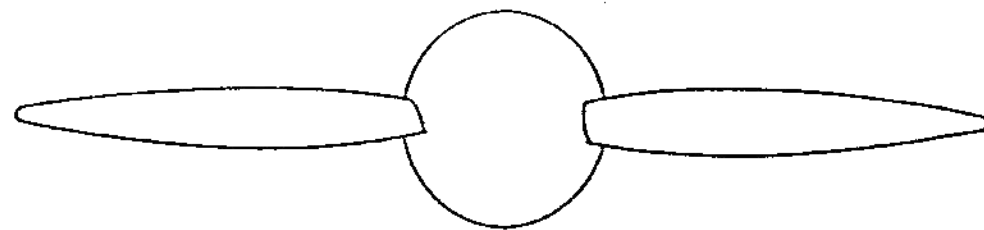
WING SPAN-19" LENGTH-13 3/4" XP-934

SCALE PROP.

WINGS & ELEVATORS ARE YELLOW
FUSELAGE IS KHAKI.
STRUTS, ETC., ARE KHAKI.

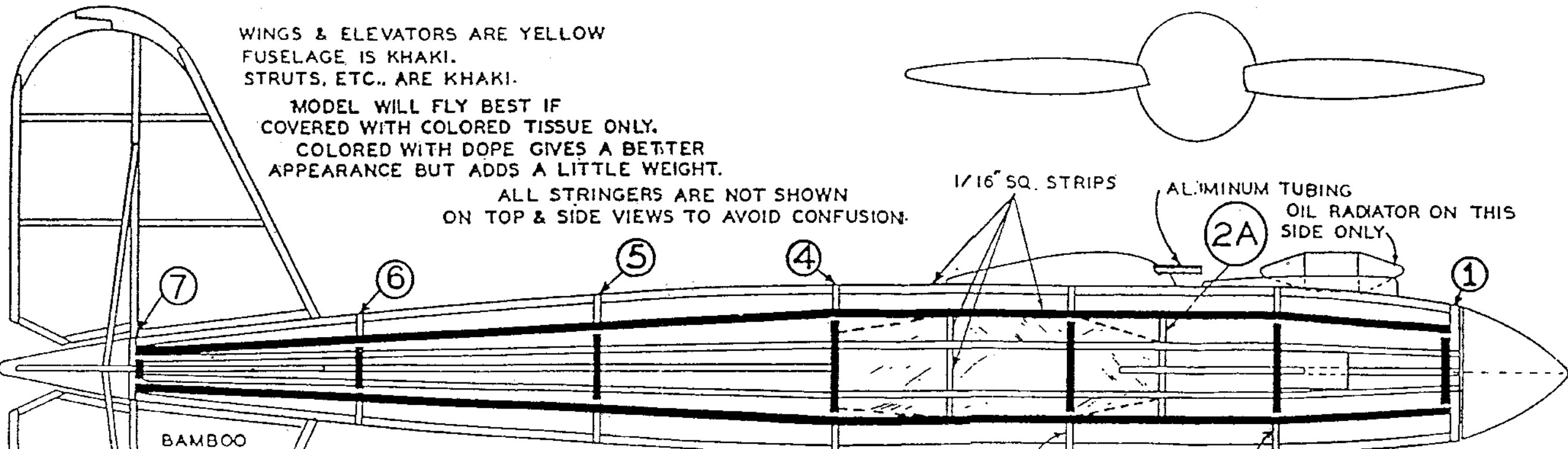
MODEL WILL FLY BEST IF
COVERED WITH COLORED TISSUE ONLY.
COLORED WITH DOPE GIVES A BETTER
APPEARANCE BUT ADDS A LITTLE WEIGHT.

ALL STRINGERS ARE NOT SHOWN
ON TOP & SIDE VIEWS TO AVOID CONFUSION.



7/16" X 7/16" X 15/16" TAILBLOCK

1/16" SQ. BALS



BAMBOO
BRACE

1/16" SQ. STRIPS

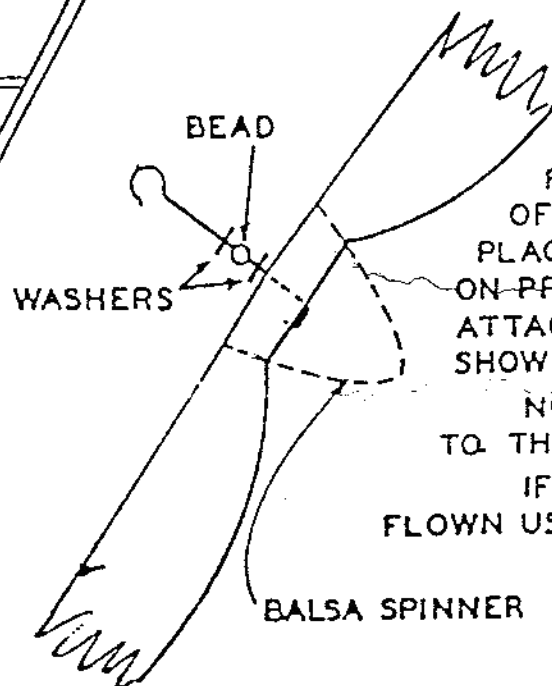
ALUMINUM TUBING

OIL RADIATOR ON THIS
SIDE ONLY

MACHINE GUN AND
FAIRING

ENGINE EXHAUST

MADE FROM A 5/16" X 5/16" X 1-5/8" BLOCK



FLYING PROP.

CUT HUB OF PROP.
DOWN SO THAT IT
FITS INTO GROOVE
OF SPINNER NEXT
PLACE WASHERS & BEAD
ON PROPELLER SHAFT AND
ATTACH PROP. TO IT AS IS
SHOWN AT LEFT

NOW CEMENT THE PROP.
TO THE SPINNER.

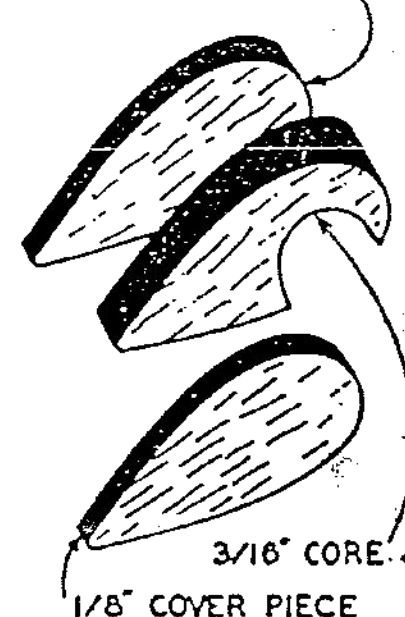
IF MODEL WILL NOT BE
FLOWN USE ONLY ONE WASHER.

BALS A SPINNER

CUT THE COVER
PIECES FROM THE BALS A
PRINTED SHEET FOUND
IN KIT. NEXT CEMENT
THESE TO THE CORE.

FINISH BY CUTTING
TO SHAPE AND SANDING
SMOOTH. PLACE WHEEL
IN POSITION & STICK A
PIN THROUGH TO ACT
AS AN AXLE.

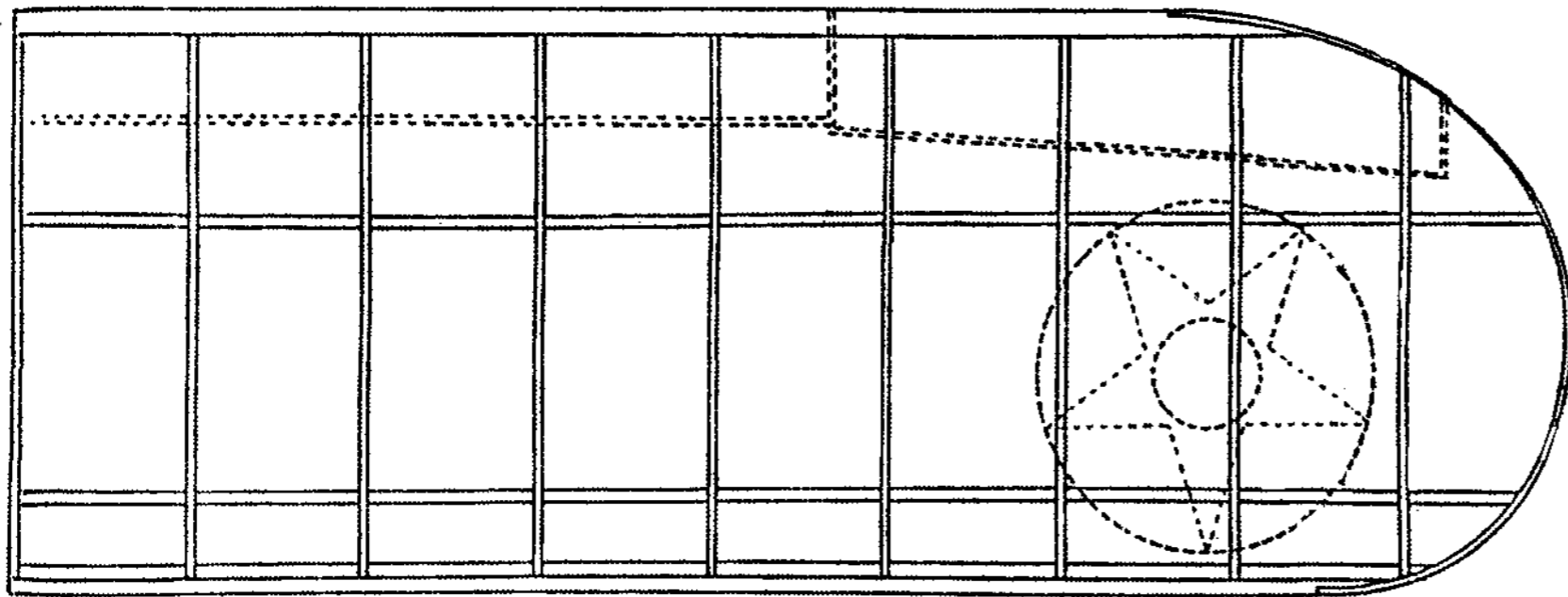
1/8" COVER PIECE



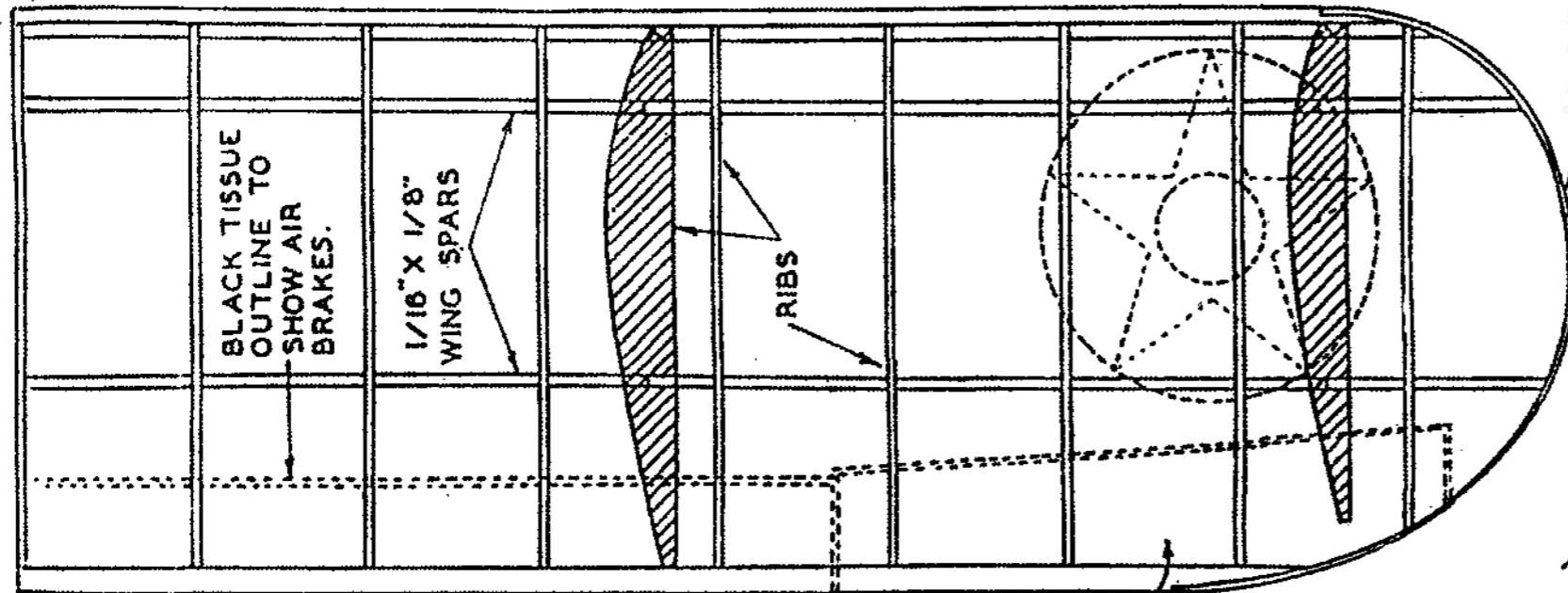
3/16" CORE

1/8" COVER PIECE

1/16" X 1/8" TRAILING EDGE

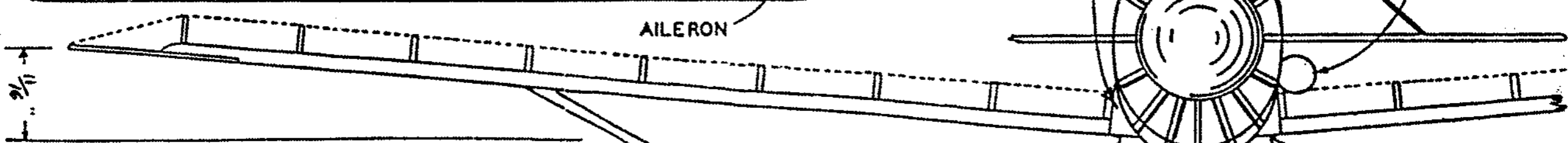


3/32" X 3/32" LEADING EDGE



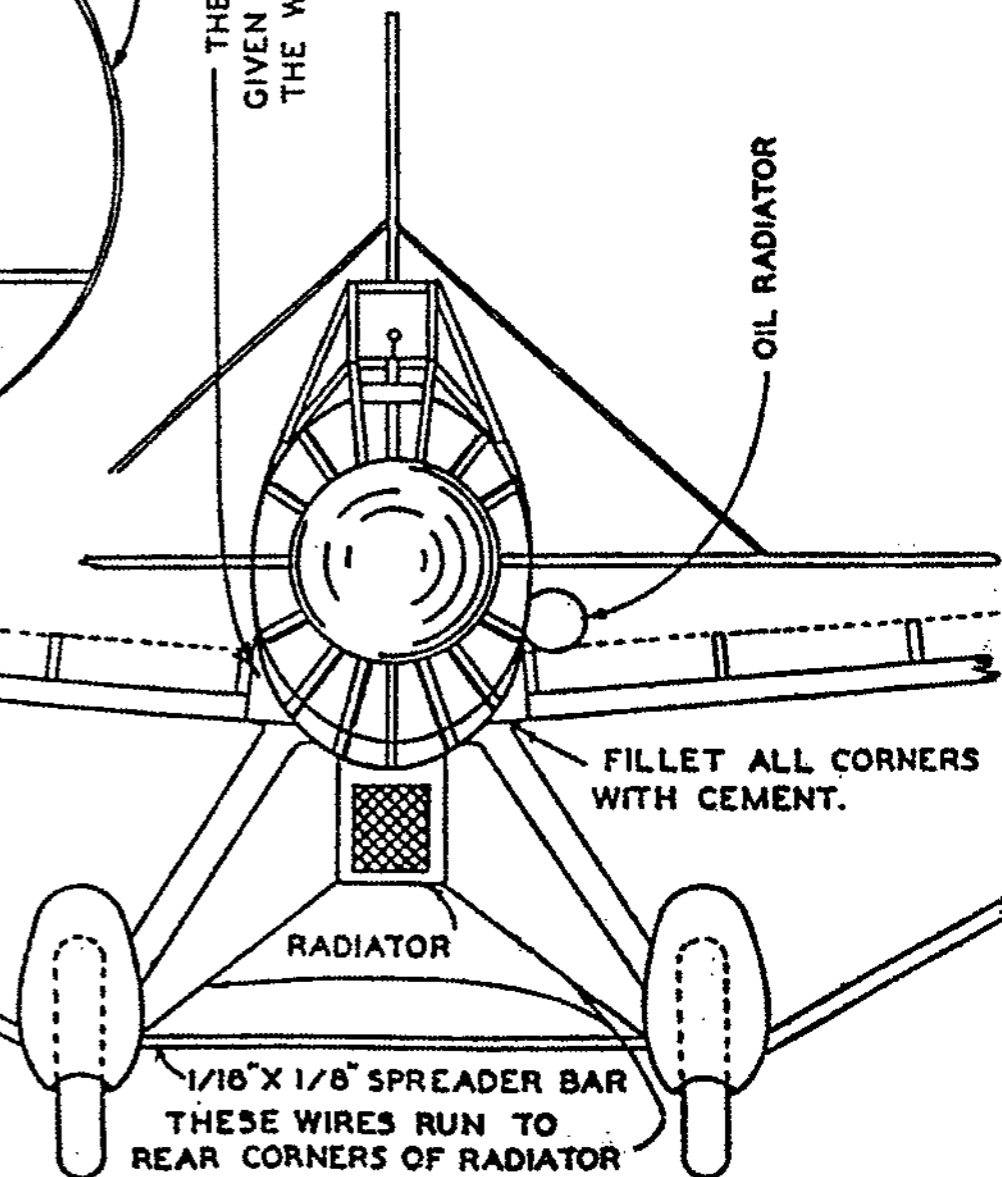
BAMBOO WING TIP

THE TRIANGULAR BLOCKS GIVEN IN KITS ARE USED FOR THE WING BUTTS



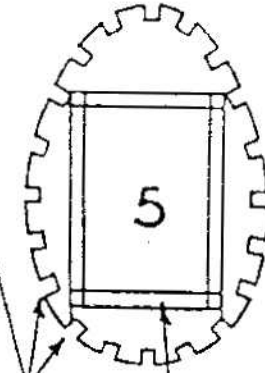
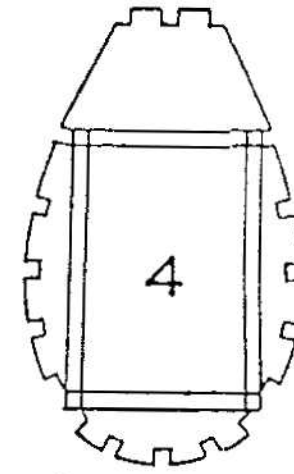
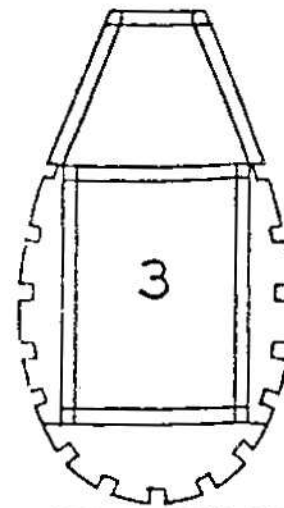
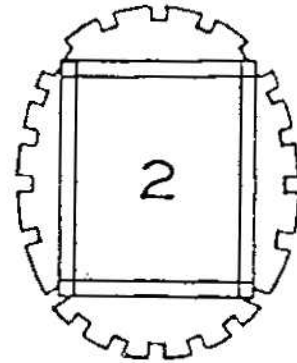
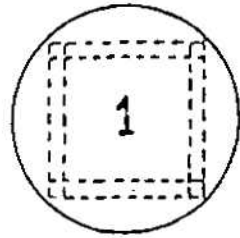
ASCERTAIN LENGTH OF STRUTS BY CUT AND TRY METHOD

3/32" X 3/16" Balsa WING STRUTS



STEP TWO

ATTACH THE TWO SIDES TOGETHER TO CONFORM TO OUTLINE SHOWN BY DARK HEAVY LINES IN VIEW ABOVE.

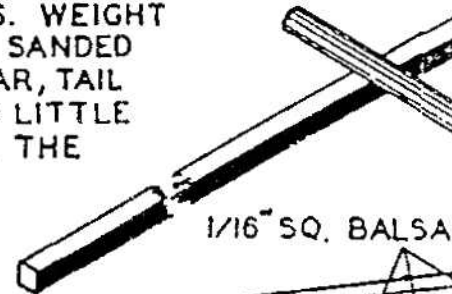


NOTE: STRINGERS ARE BUTTED AGAINST INSIDE OF FORMERS 1 AND 7. NO NOTCHES ARE REQUIRED FOR THESE TWO.

STEP THREE

CUT FORMERS OUT FROM THE PRINTED Balsa SHEET AND CEMENT THEM TO PRIMARY STRUCTURE. NEXT CEMENT THE STRINGERS INTO THE NOTCHES OF FORMERS. WEIGHT OF MODEL WILL BE REDUCED IF STRINGERS ARE SANDED DOWN A LITTLE THINNER. WINGS, LANDING GEAR, TAIL ASSEMBLY, ETC. ARE NEXT. THESE PARTS NEED LITTLE EXPLANATION. IT IS A GOOD IDEA TO COVER THE PARTS BEFORE PUTTING TOGETHER.

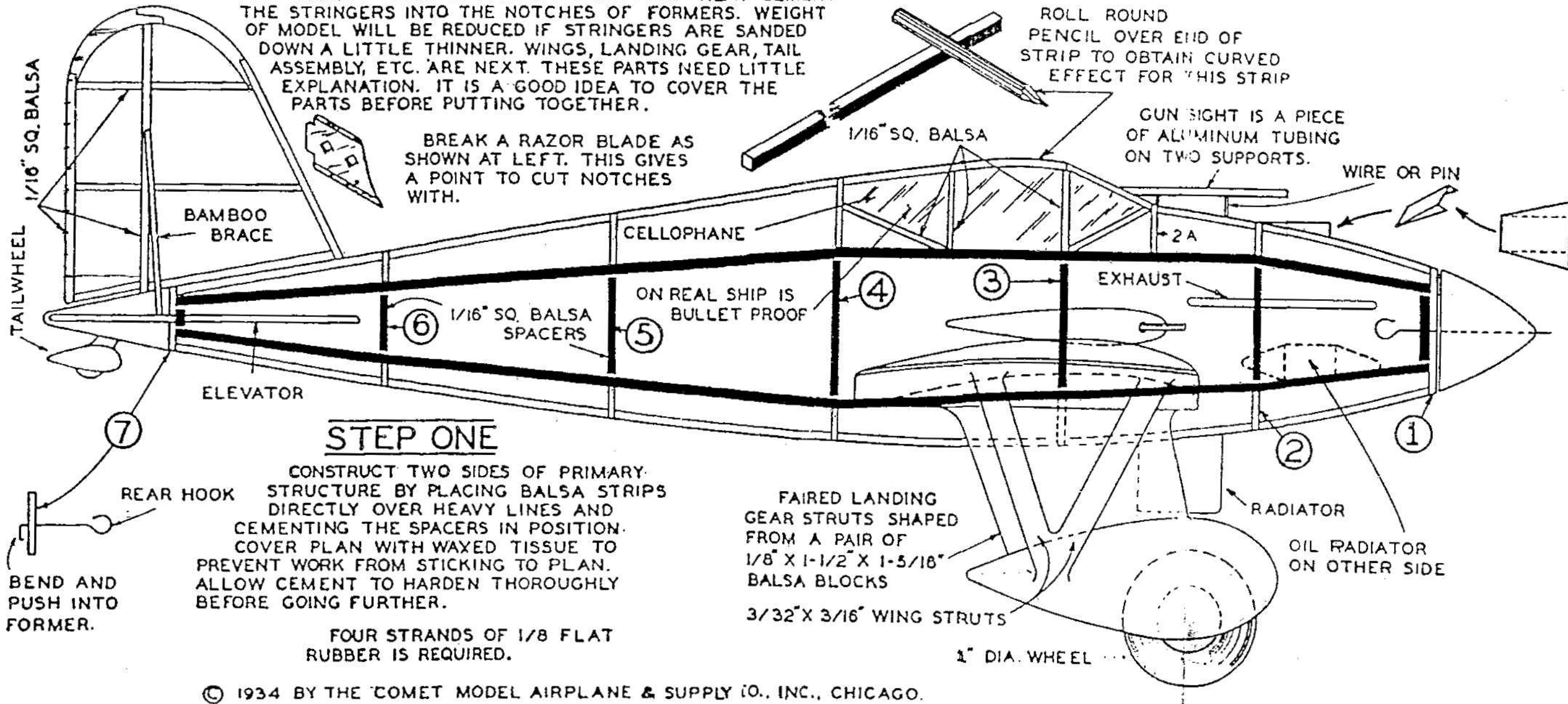
BREAK A RAZOR BLADE AS SHOWN AT LEFT. THIS GIVES A POINT TO CUT NOTCHES WITH.



ROLL ROUND PENCIL OVER END OF STRIP TO OBTAIN CURVED EFFECT FOR THIS STRIP

GUN SIGHT IS A PIECE OF ALUMINUM TUBING ON TWO SUPPORTS.

WIRE OR PIN



STEP ONE

CONSTRUCT TWO SIDES OF PRIMARY STRUCTURE BY PLACING Balsa STRIPS DIRECTLY OVER HEAVY LINES AND CEMENTING THE SPACERS IN POSITION. COVER PLAN WITH WAXED TISSUE TO PREVENT WORK FROM STICKING TO PLAN. ALLOW CEMENT TO HARDEN THOROUGHLY BEFORE GOING FURTHER.

FOUR STRANDS OF 1/8 FLAT RUBBER IS REQUIRED.

FAIRED LANDING GEAR STRUTS SHAPED FROM A PAIR OF 1/8" X 1-1/2" X 1-5/16" Balsa BLOCKS

3/32" X 3/16" WING STRUTS

1" DIA. WHEEL

OIL RADIATOR ON OTHER SIDE