

FUSELAGE BULKHEADS
A. TO I. 1/16" SHEET
2 EACH REQUIRED

BALSA CONSTRUCTION
RECOMMENDED BUT PINE
MAY BE SUBSTITUTED



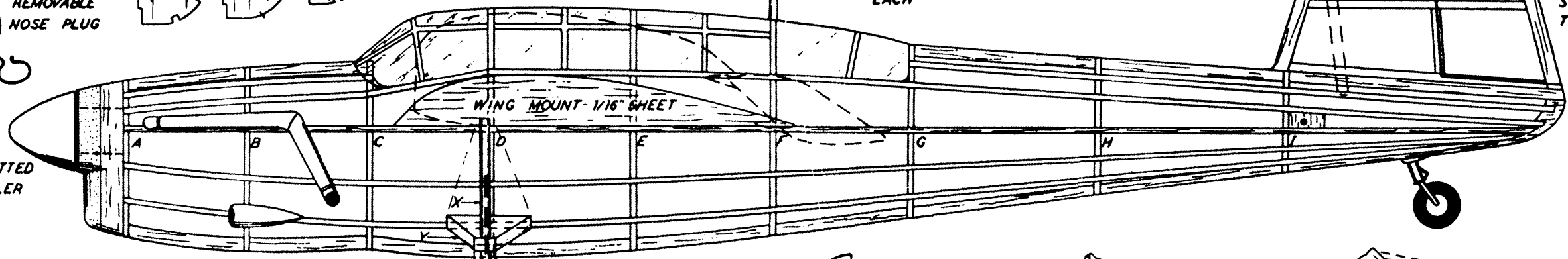
REMOVABLE
NOSE PLUG

SPINNER FITTED
TO PROPELLER

WING SHOWN IN BROKEN
LINES - TIPS RAISED TO
FORM 1-1/4" DIHEDRAL UNDER
EACH

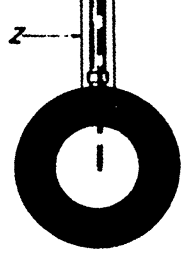
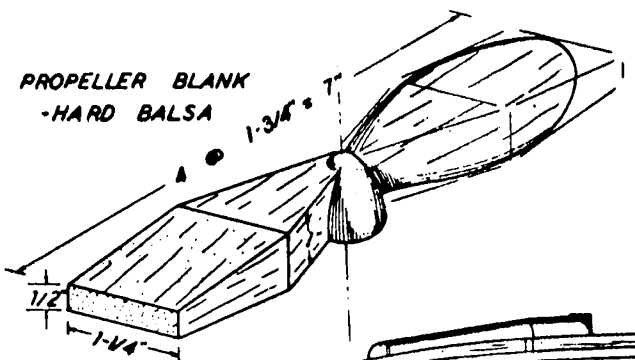
STABILIZER
POSITION

ENTIRE RUDDER
STRUCTURE 3/32
THICK STOCK

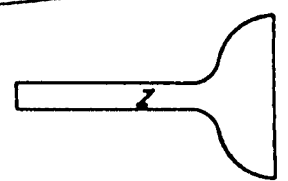


WING MOUNT - 1/16" SHEET

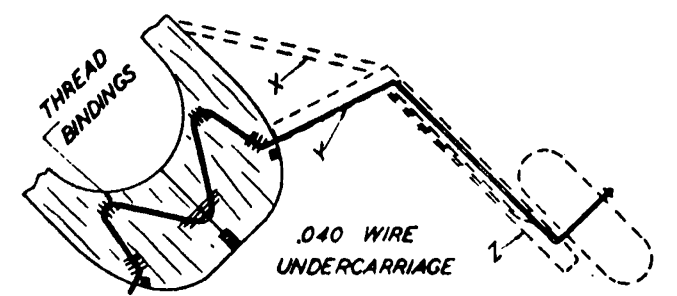
PROPELLER BLANK
- HARD BALS



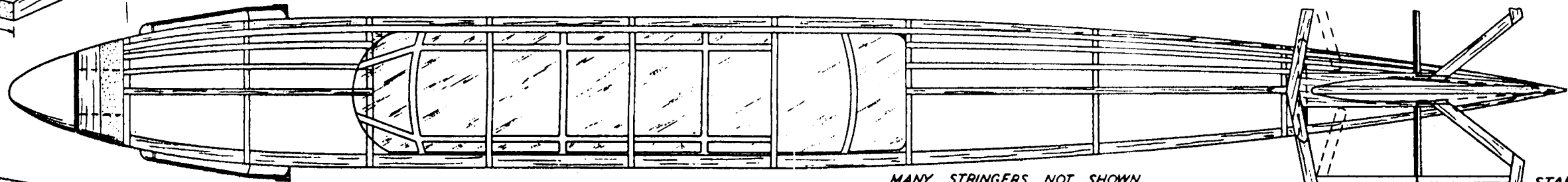
COCKPIT ENCLOSURE IS
THIN CELLULOID - FRAME
OUTLINES BLACK TISSUE
STRIPS



LANDING GEAR
ATTACHMENT

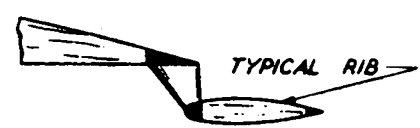


.040 WIRE
UNDERCARRIAGE

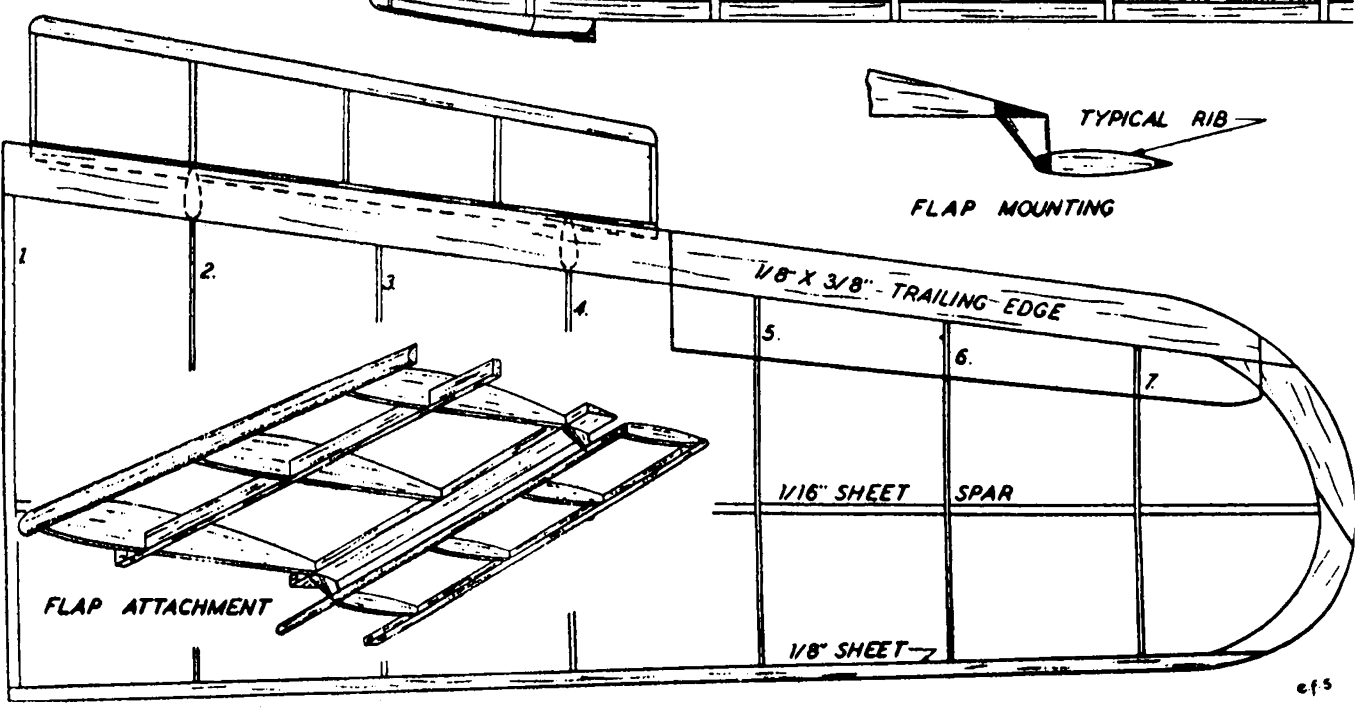


MANY STRINGERS NOT SHOWN
ON FUSELAGE PLAN TO REVEAL
THE 1/16" SHEET KEELS

STABILIZER MADE
IN ONE PIECE FROM
1/16" THICK STOCK



TYPICAL RIB
FLAP MOUNTING

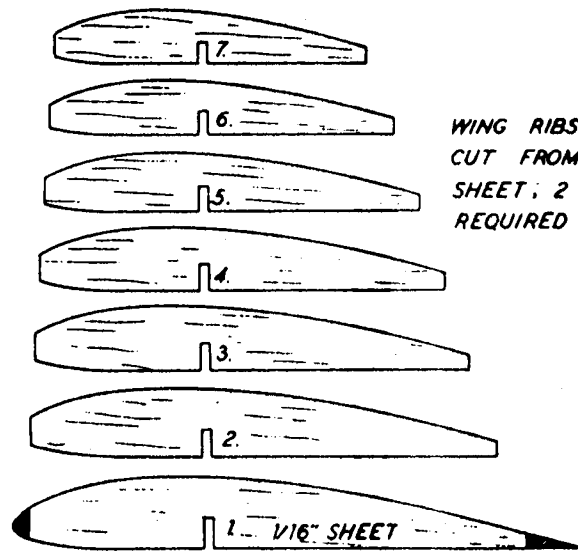


1/8" X 3/8" - TRAILING EDGE

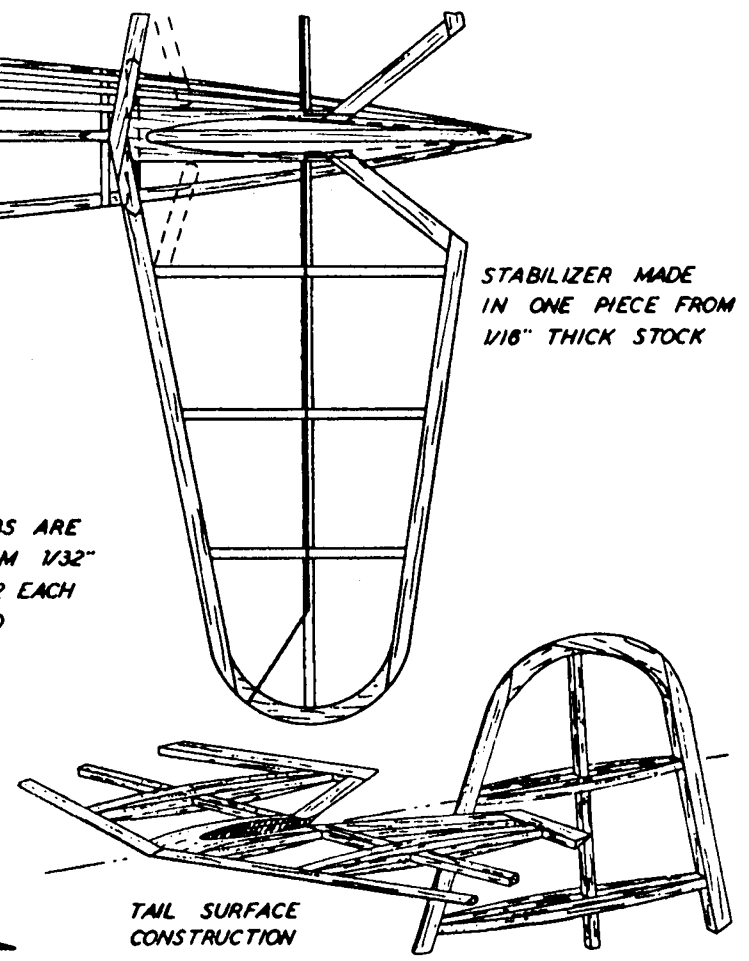
1/16" SHEET SPAR

1/8" SHEET

FLAP ATTACHMENT



WING RIBS ARE
CUT FROM 1/32"
SHEET; 2 EACH
REQUIRED



TAIL SURFACE
CONSTRUCTION

efs