

-REFERENCE DATA-

3 VIEW FROM WORLD ENCYCLOPEDIA OF CIVIL AIRCRAFT BY ANGELUCCI PG. 115.  
 PHOTO IN DORNIER BY B. OGDEN, FLYPAST REFERENCE LIBRARY PG. 20.  
 ENTIRE AIRFRAME COVERED WITH WHITE PLYSPAN TISSUE.  
 BRUSH (NOT SPRAY) ONE COAT OF AERO GLOSS CLEAR DOPE.  
 SPRAY SEVERAL COATS OF AERO GLOSS 64-1 SWIFT WHITE DOPE ABOVE W/L,  
 AERO GLOSS 63-1 JET BLACK BELOW W/L.  
 DO NOT CUT WINDOWS IN TISSUE AREAS UNTIL PAINTING IS COMPLETED. CUT  
 OPENINGS WITH #11 EXACTO BLADE. CUT MATCHING OPENINGS IN MONOCOAT  
 WHITE ADHESIVE BACKED TRIM SHEET. STICK TO ACETATE, THEN SCISSOR  
 OUTLINES. ADHERE TO FUSELAGE USING AMBROID GLUE. DISPENSE FROM HYPO.  
 PROTOTYPE WEIGHT: 6 OZ. INCLUDING 4 x 200 mAh BATTERY PACK.  
 CAUTION: MAX. CHARGE 6 MIN AT 2 AMPS. DO NOT EXCEED!  
 RECOMMENDED BATTERY PACK: 4 x 150mAh. MAX CHARGE 4.5 MIN AT 2 AMPS.

RED LIGHT  
 INK LINES

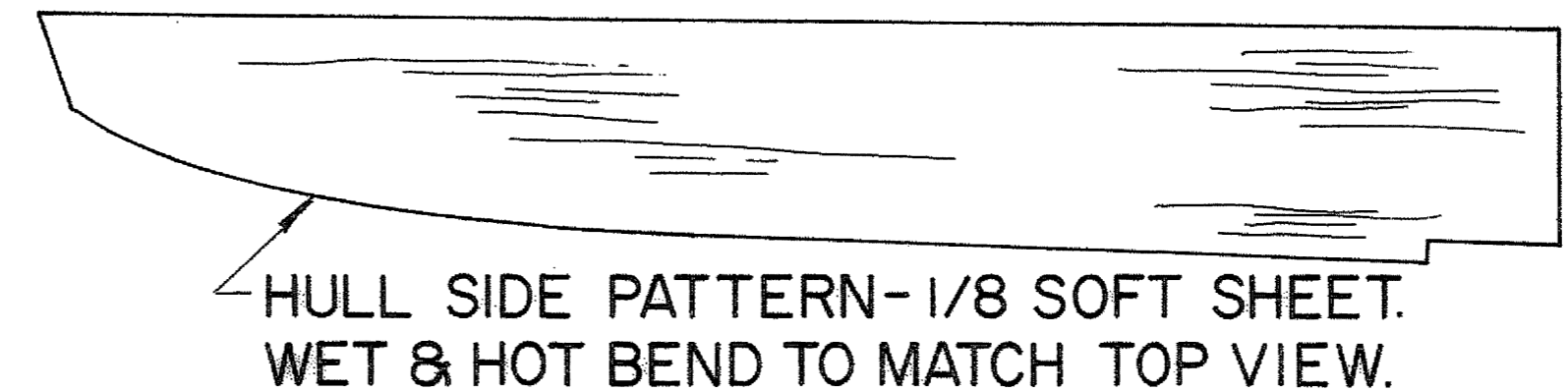
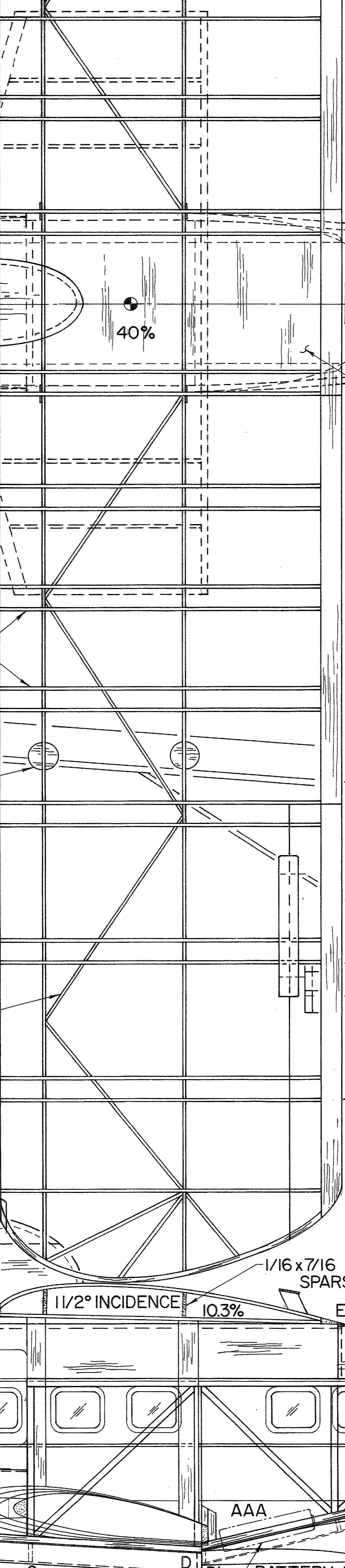
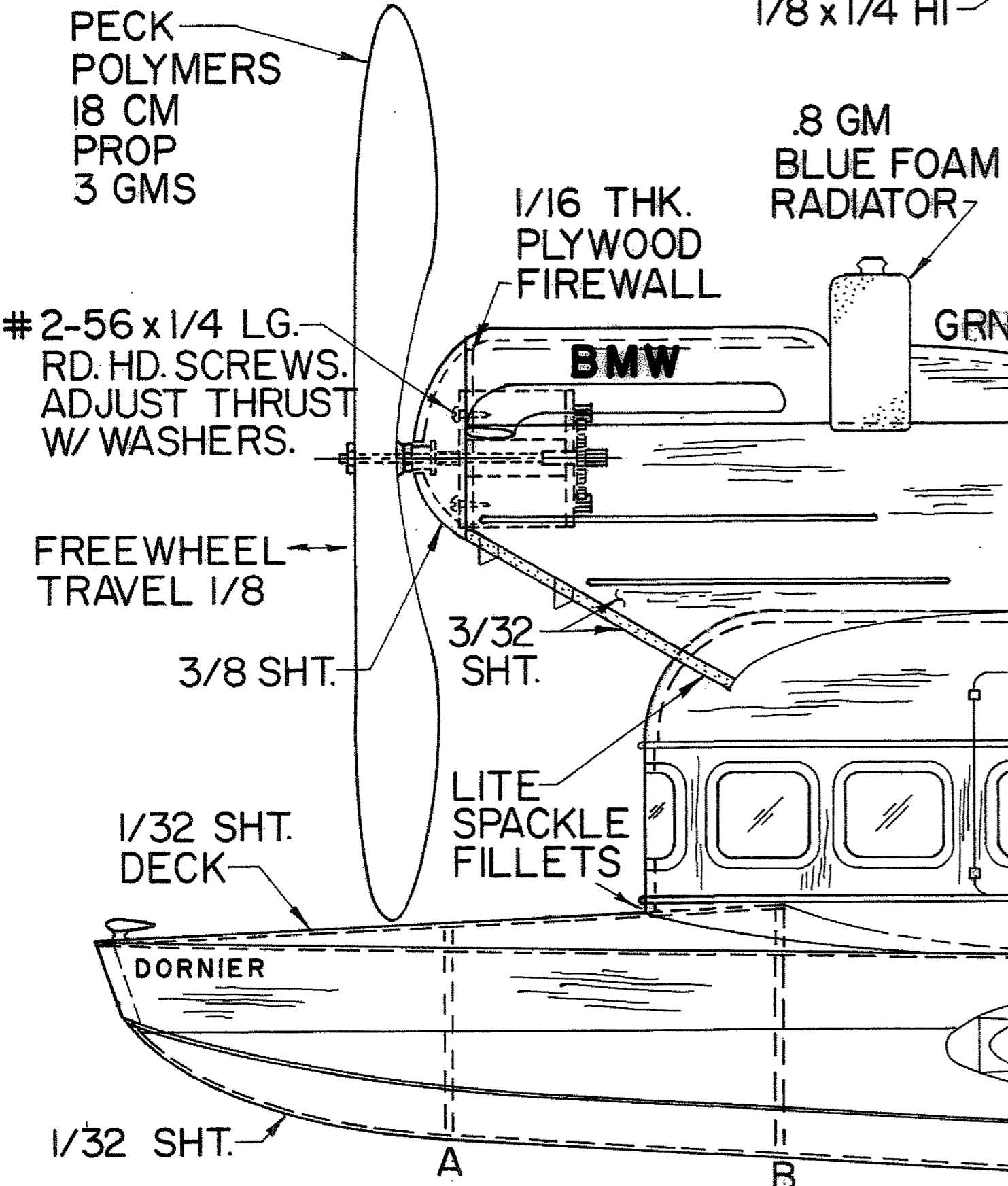
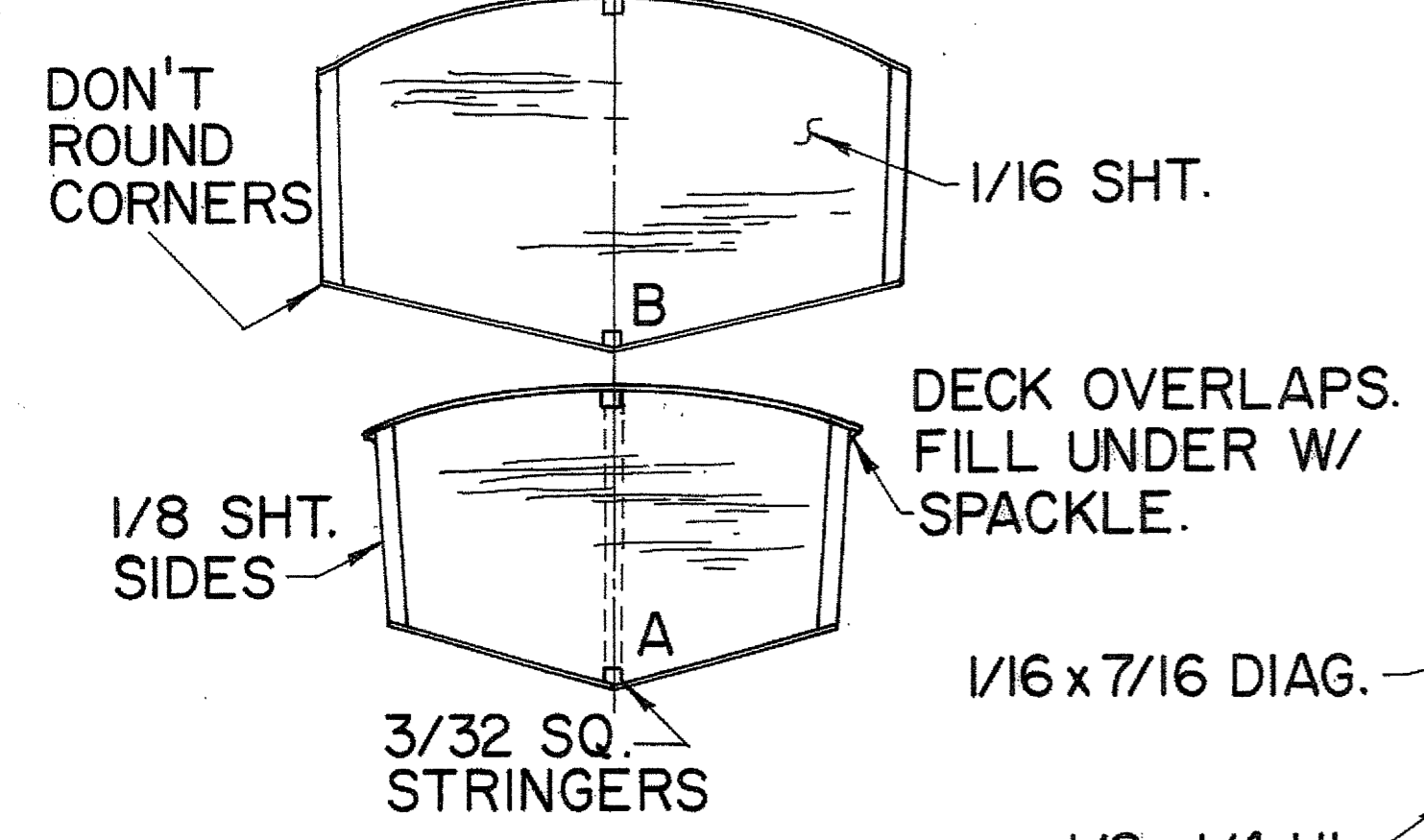
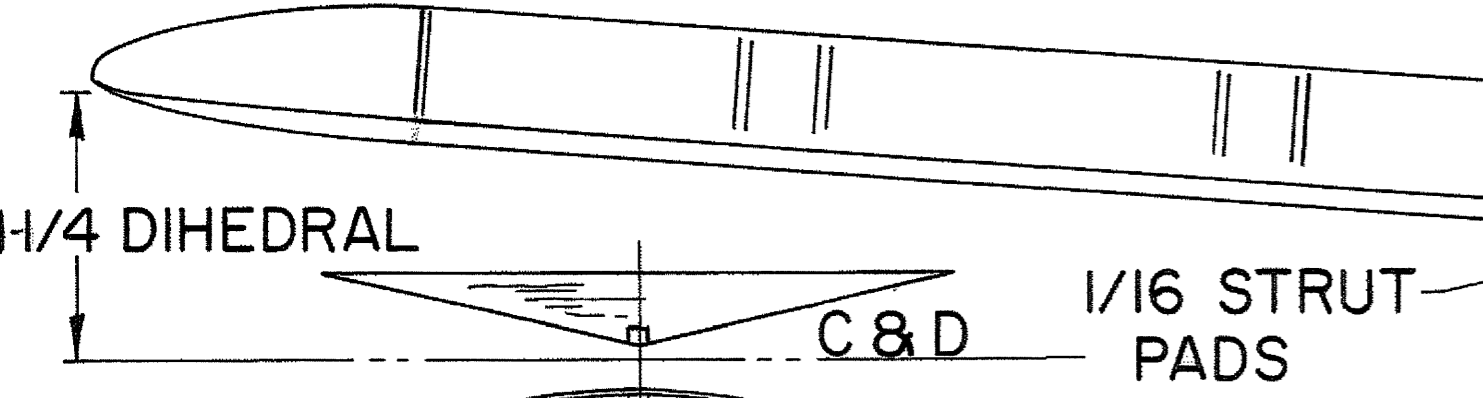
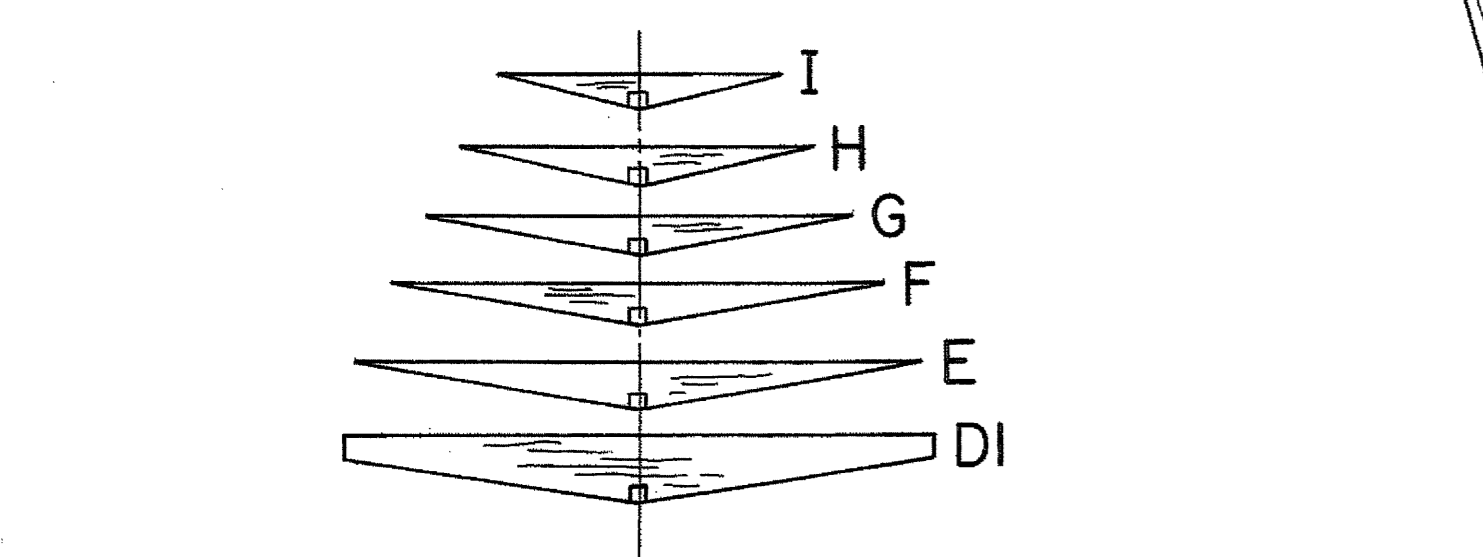
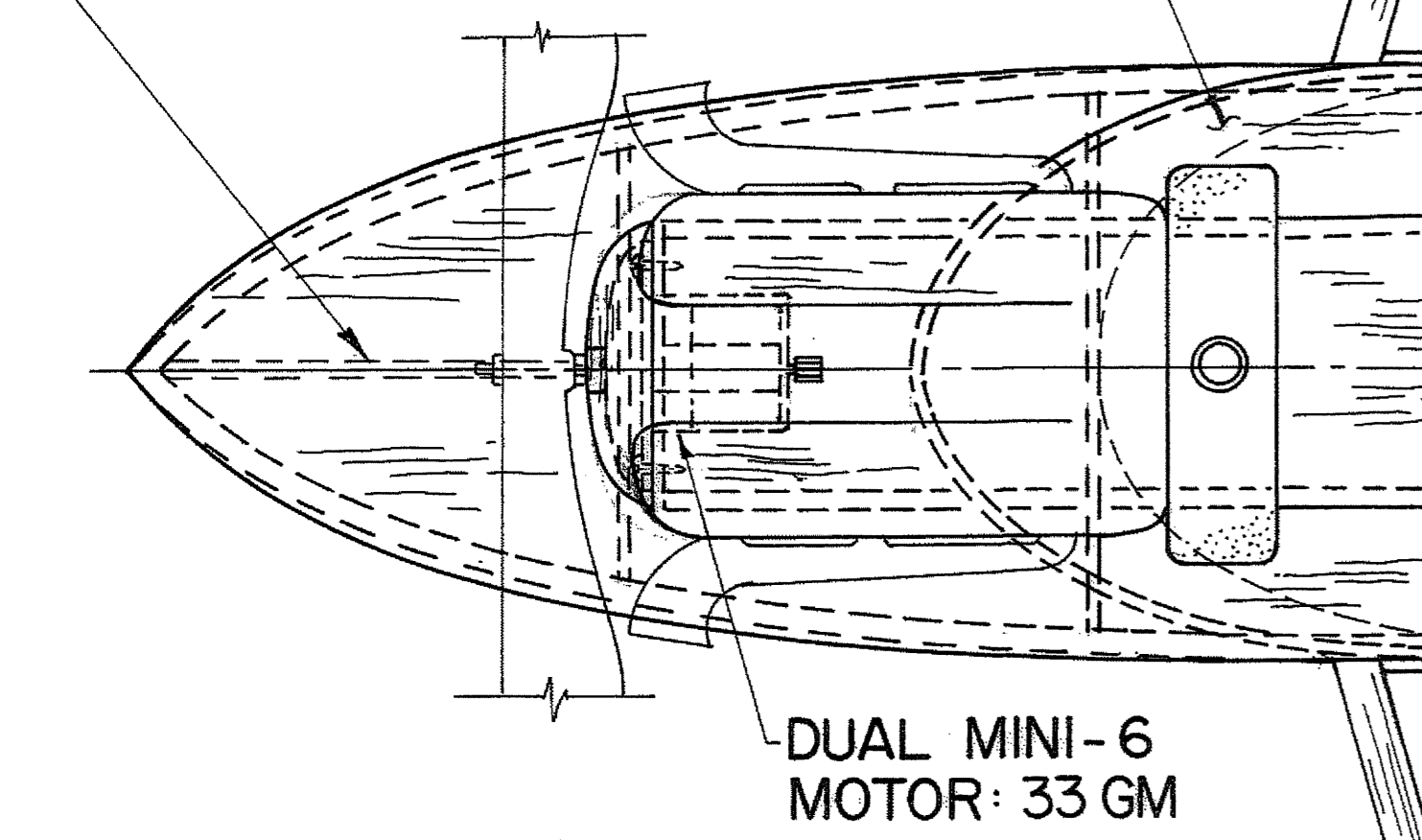
1/32 SHT. FLYING  
 AILERONS

STAB WEIGHTS:  
 2.2 GM FRAME  
 3.5 GM COVERED

WING WEIGHTS:  
 15 GM FRAME  
 19 GM COVERED

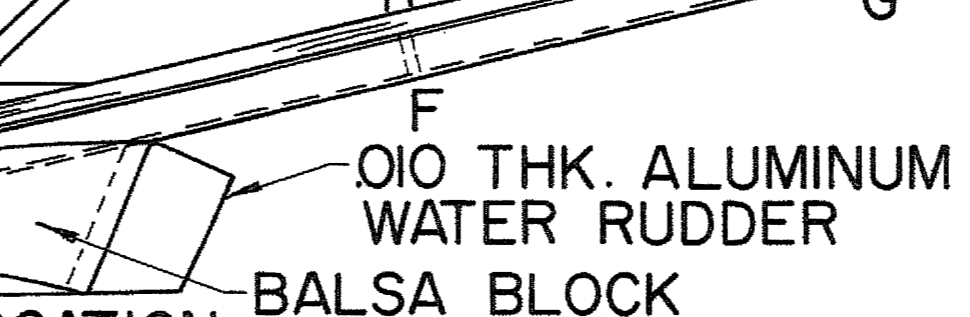
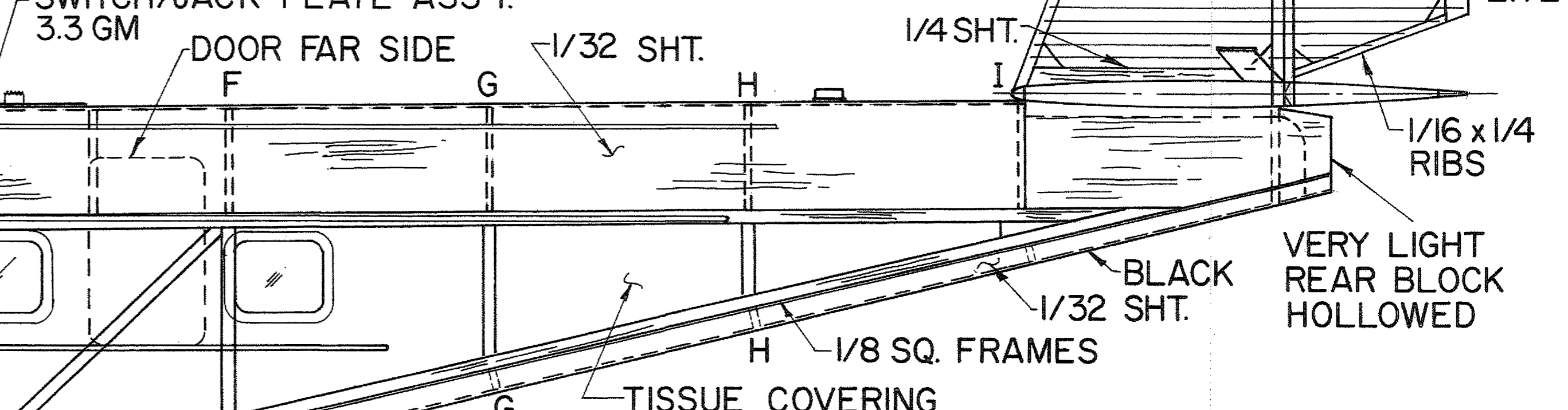
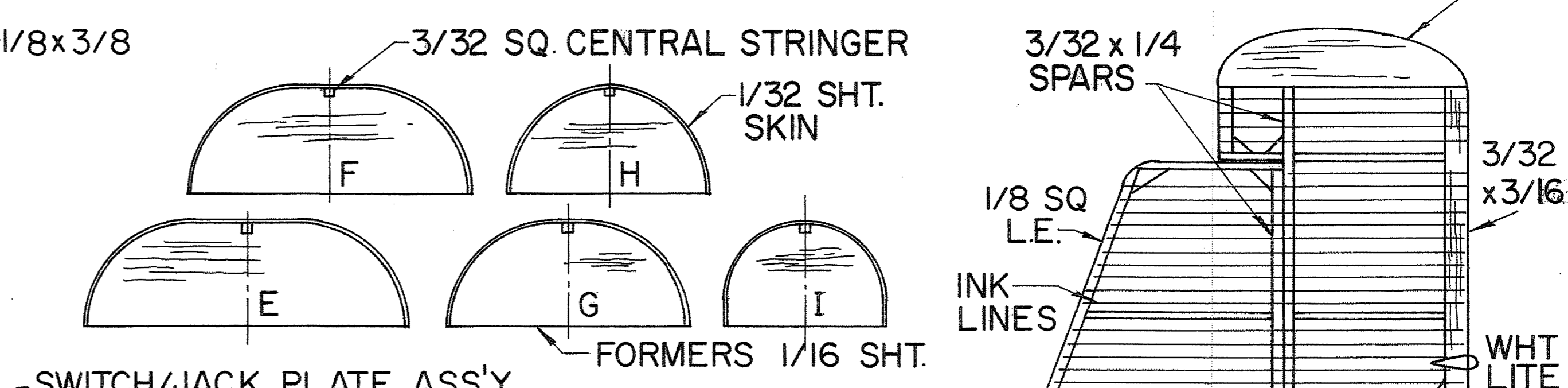
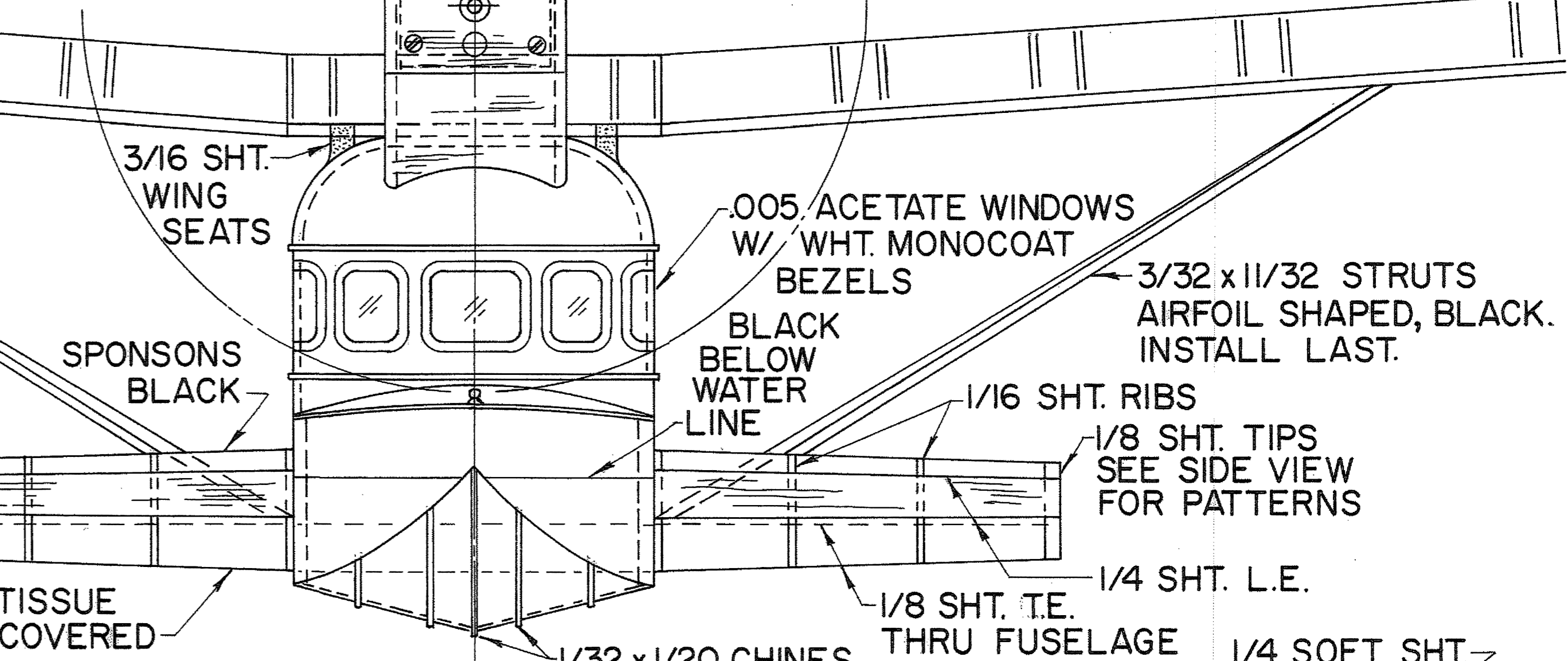
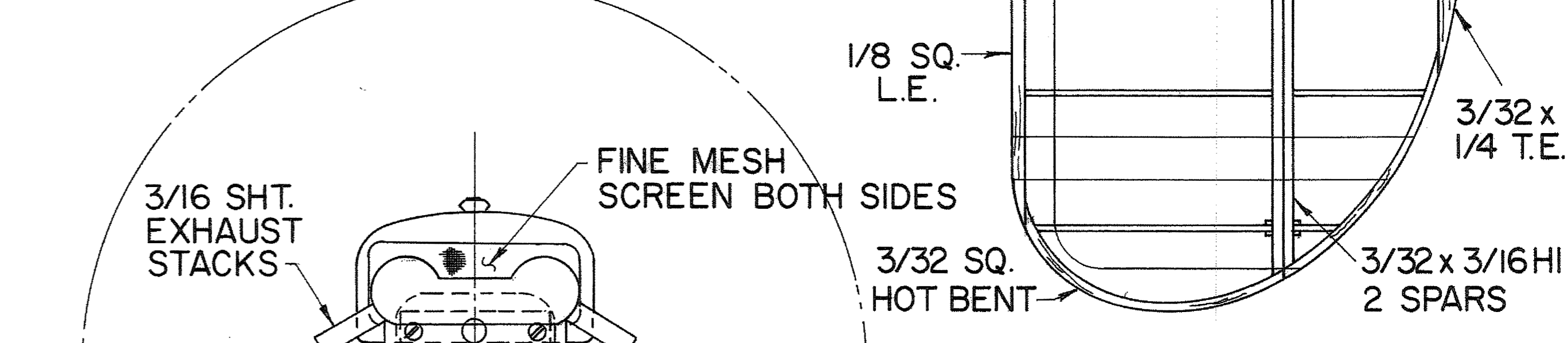
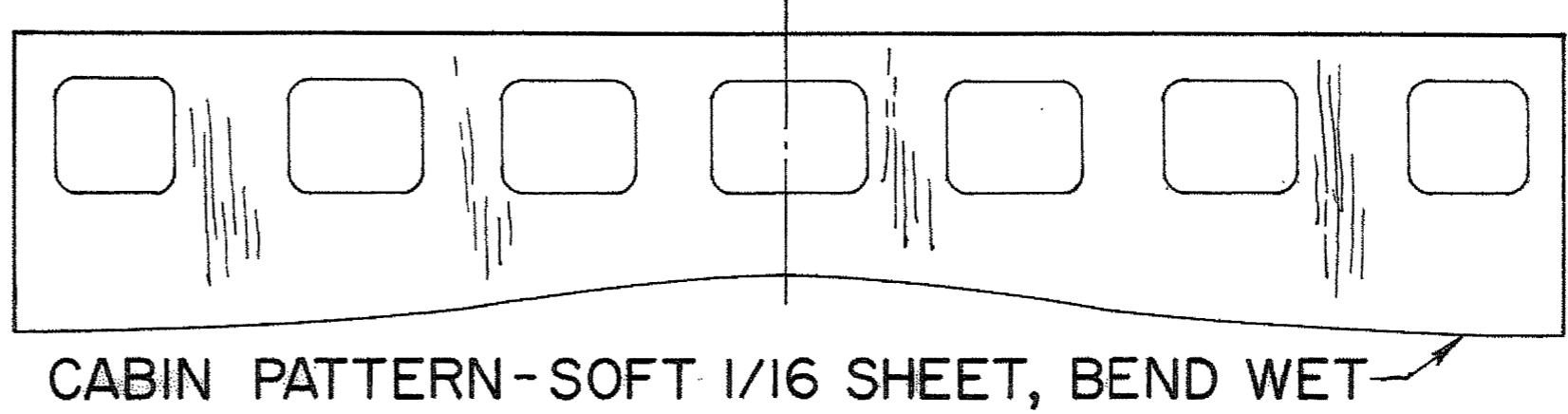
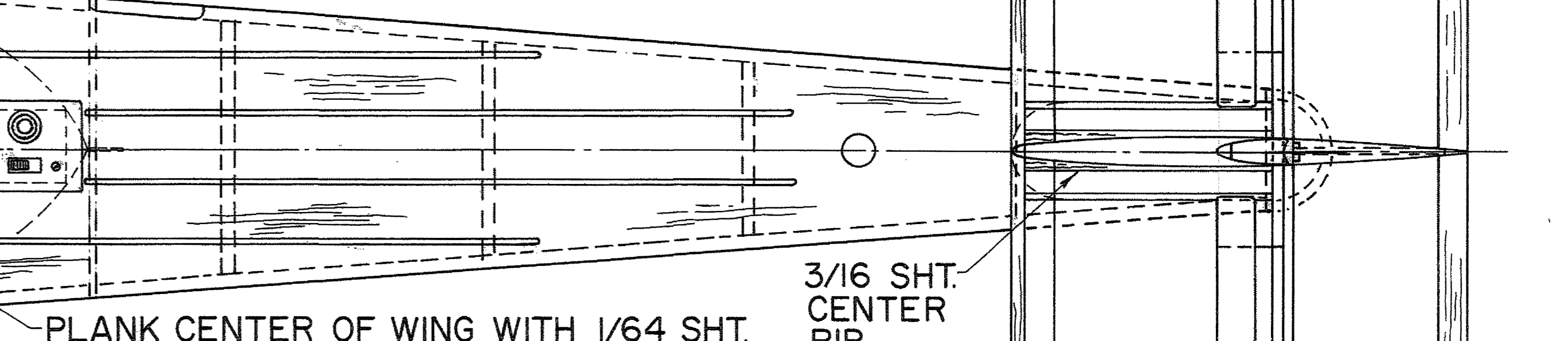
This free plan courtesy of the Rees Family

1 x 4 x 12 Balsa TOP  
 HOLLOW TO 3/32 THK  
 3/32 SHT. FROM PROW  
 TO FIRST BULKHEAD



FUSELAGE FRAME WEIGHT  
 29 GM LESS MOTOR POD

RUDDER WEIGHTS:  
 .8 GM FRAME  
 1.1 GM COVERED



**1928 DORNIER Do L3 DELPHIN III**  
 SPAN: 36", WING AREA: 220 SQ. IN., FOR DUAL MINI 6  
 PL16 BY DAVE REES JULY 92