

This free plan courtesy of the Rees Family

-REFERENCE DATA-

NO 3 VIEW AVAILABLE FOR THIS VERSION. GOOD COLOR PIX IN SPORT AVIATION NOV '68 PAGES 18 & 19. M-10 3 VIEW IN SPORT FLYING PAGES 10 & 11. CONTACT E.A.A OSHKOSH FOR BOTH.

COVER ENTIRE AIRFRAME W/MICRO-X WHITE JAP TISSUE. AIRBRUSH 1 COAT OF AEROGLOSS SWIFT WHITE 64-1. STRIPES & NUMBERS RAILROAD COLORS 110450 S00 LINE RED.

3x110 CELLS GIVE ABOUT 1 MINUTE AIRTIME ON FULL CHARGE (6.6 AMP MINUTES). 3x150 CELLS ABOUT 1.5 MINS. (9 AMP MINUTES).

PROTOTYPE WEIGHT: 100 GMS (3.5 OZ.)

TO MAINTAIN DOWEL ALIGNMENT, STACK 4 MOTOR POD SIDES ON NOSE-BLOCK BEFORE SHAPING AND DRILL 4 HOLES WITH DRILL PRESS THRU ALL AT ONCE.

HILINE MICRO-4 TWIN MOTOR SYSTEM

M6 09

.006 TO .008 THK. WHITE PAPER

NO. 7903 4 MIDWEST 1/16x12" BIRCH DOWELS .078 DIA. 1.6 GMS

3/16 Balsa CYL. HEADS

3 1/2Dx3 1/2P R&L HAND PROPS PO 04 1 GM EACH

4 WMS. BROS. 3/4" SCALE CYLINDERS. CUT OFF AT TOP TO FIT. 2 GM/MOTOR
MAKE VW VALVE COVERS BY PRESSING RENOLDS WRAP ALUM. FOIL OVER A Balsa MASTER FORM.

3/16 SQ. L.E.

1/20 x .297 SPAR

1/16 SQ. LOWER RIBS
1/16 SQ. SLICED UPPER RIBS

.006 THK. PAPER RED

MOTOR POD TOP PATTERN

.020 THK. ALUM. MOTOR MOUNT. BEND & GLUE TO MOTOR SIDES W/ CYA.

1/8 SHT. MOTOR BEARERS. SHIM MOTORS FOR THRUST ADJ.

.005 THK. ACETATE

4° DOWN THRUST

RED CRANKCASES

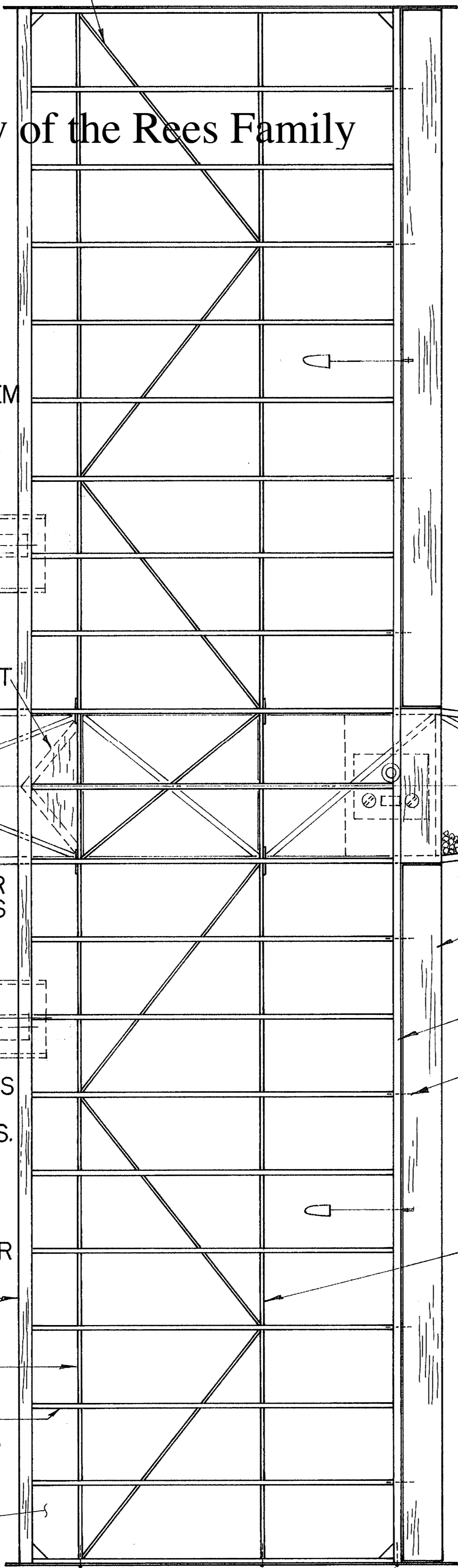
Balsa BLOCK HOLLOWED TO 3/32 WALL

.047 MUSIC WIRE WHITE WIRE INSUL. FAR SIDE

1 1/16 DIA. PLASTIC RACE CAR WHEELS 5 GM/PAIR

DOOR FAR SIDE
DOOR NEAR SIDE

1/32 x 5/16 DIAGONAL BRACES



1/32 BIRCH PLYWOOD TIP PLATES, RED

.010 ALUMINUM CONTROL HORNS

.005 NYLON CABLES

FUSELAGE WEIGHTS:
2 SIDES: 2.5 GM
BOX: 3.1 GM
W/GEAR: 5.4 GM

0° INCIDENCE

9%

C.G.

RED STRIPE

3/32 SQ. TYP.

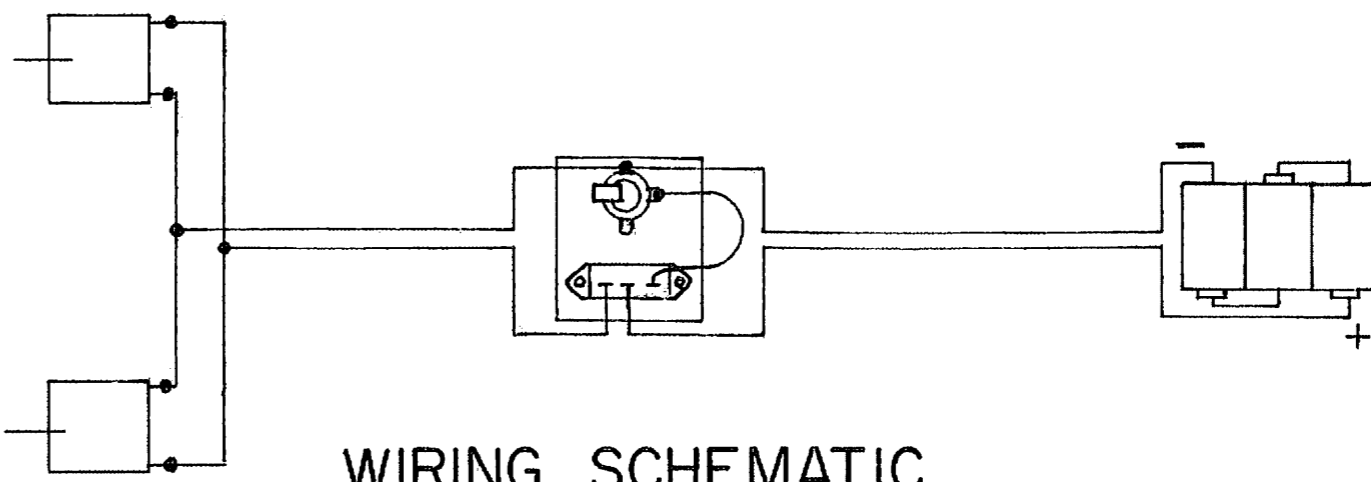
.008 MUSIC WIRE DUAL ANTENNAS

RED LETTERS & STRIPES

.031 MUSIC WIRE

5/16 OD O-RING CEMENT TO TURNED NYLON HUB

ENTIRE FUSE 3/32 SQ. DIAGONALS IN ALL BAYS



WIRING SCHEMATIC

WING WEIGHTS:
FRAME: 6.3 GM
COVERED & PAINTED W/TIPS: 13.5 GM

ENCASE CELLS IN WHITE FOAM & WHITE GLUE TO FRAME.

1/8x1/2 SHT. AILERONS

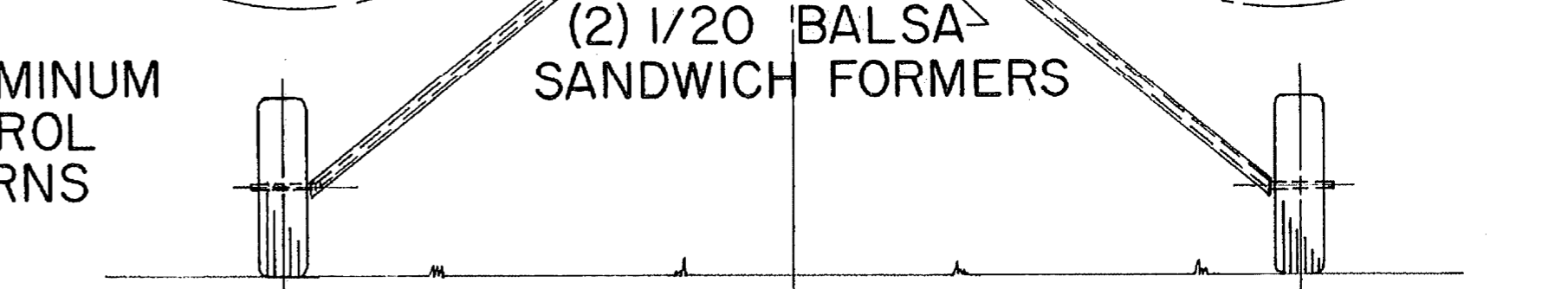
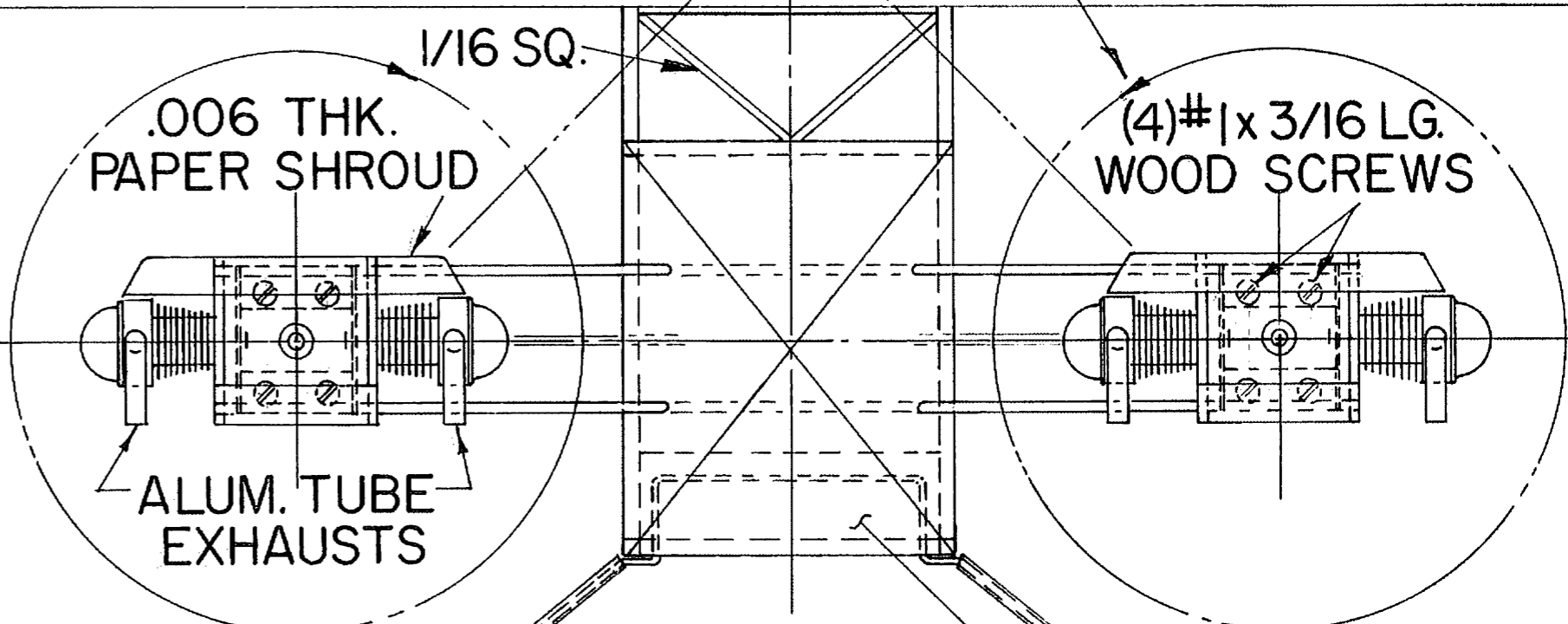
3/32 W x 5/32 HI T.E.

.025 COPPER WIRE HINGES TYP.

1/20 x 5/16 SPAR

.005 NYLON STAB & RUDDER BRACING

NOTE PROP ROTATION DIRECTIONS.



RUDDER WEIGHTS:
FRAME: 4 GM
COVERED: 7 GM

RED STRIPE

3/32 SQ. TYP.

.008 MUSIC WIRE DUAL ANTENNAS

RED LETTERS & STRIPES

.031 MUSIC WIRE

5/16 OD O-RING CEMENT TO TURNED NYLON HUB

SWITCH & JACK PLATE MOUNT ON 3/32 Balsa

3x110 OR 3x150 MAH NICAD BATTERIES 22 GM OR 27 GM

ENTIRE FUSE 3/32 SQ. DIAGONALS IN ALL BAYS

1968 LACY M-10C "TWIN BUG"

20" SPAN, 110 SQ. INS., 1" = 1'-0"
FOR 2 HILINE MICRO-4 MOTORS
BY DAVE REES 26 NOV 94