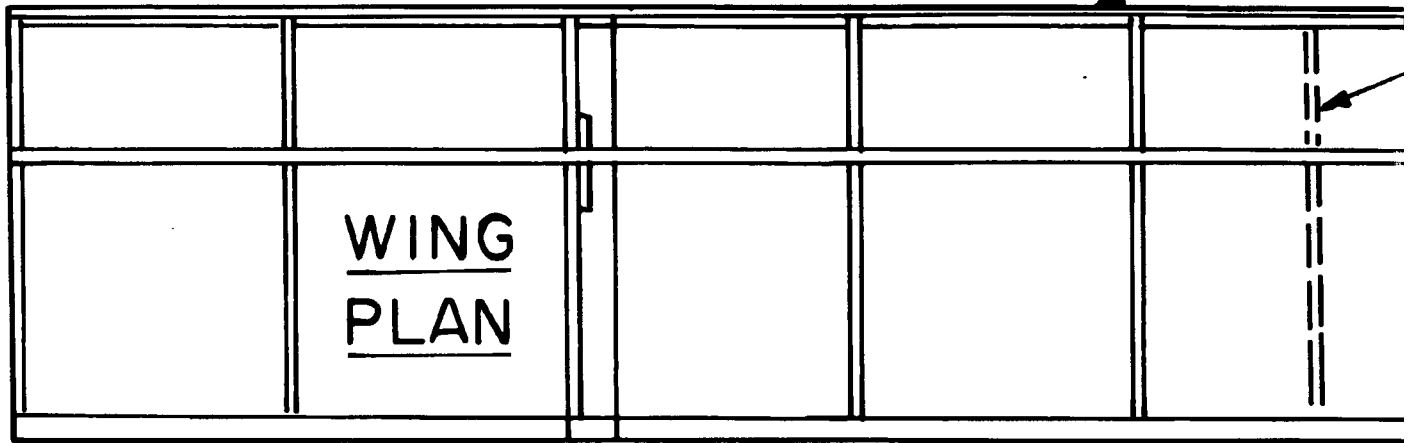


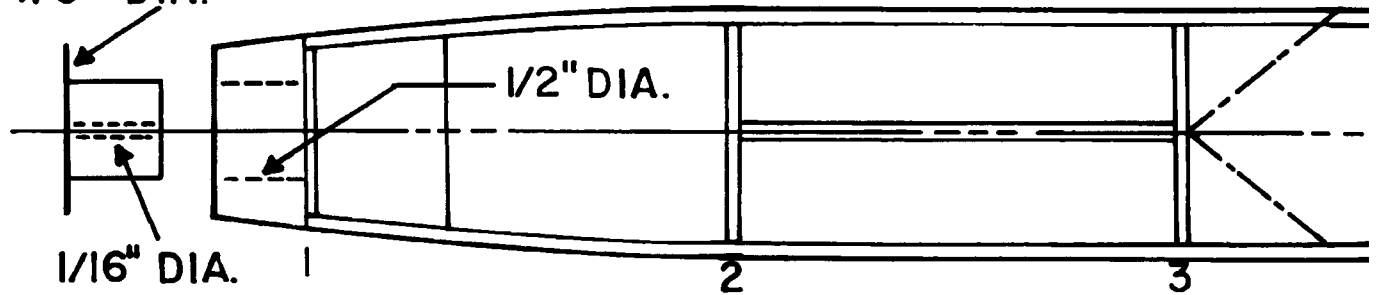
3/32" SQ. BALSA L. E.



1/64" PLY,
7/8" DIA.

1/16" x 1/8" BALSA T. E.

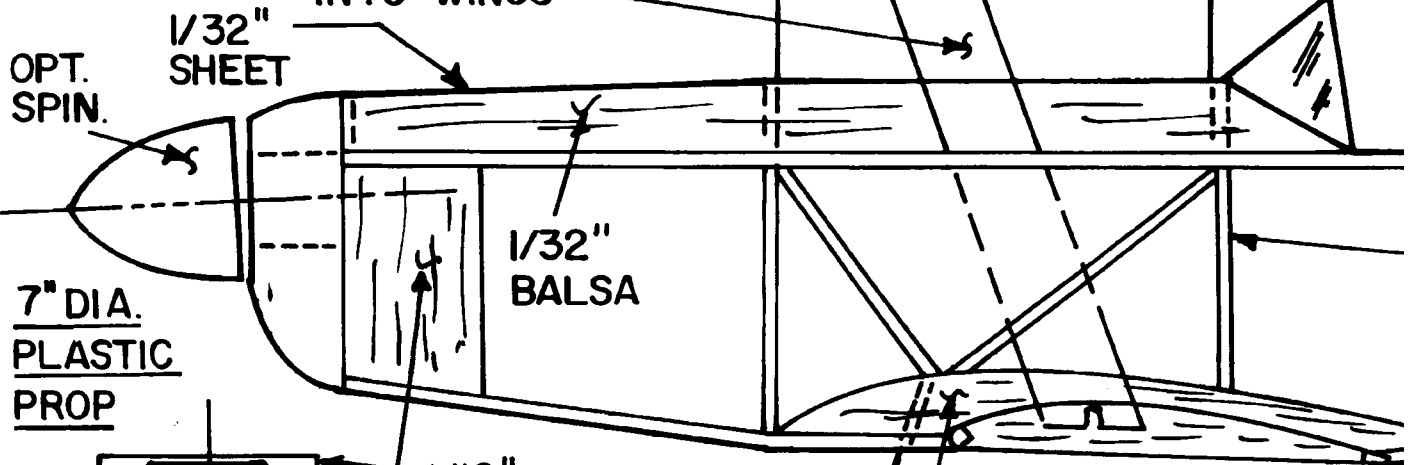
TOP VIEW



1/16" DIA.
BRASS
TUBE

INTERPLANE
STRUTS-EXTEND
INTO WINGS

WING RIB



OPT.
SPIN.

1/32"
SHEET

7" DIA.
PLASTIC
PROP

1/32"
BALSA

1/16"
BALSA

L.G. MOUNT

LANDING GEAR

OPTIONAL
WHEEL PANTS
3/4" DIA.
WHEELS

1/16"
BALSA

PYLON

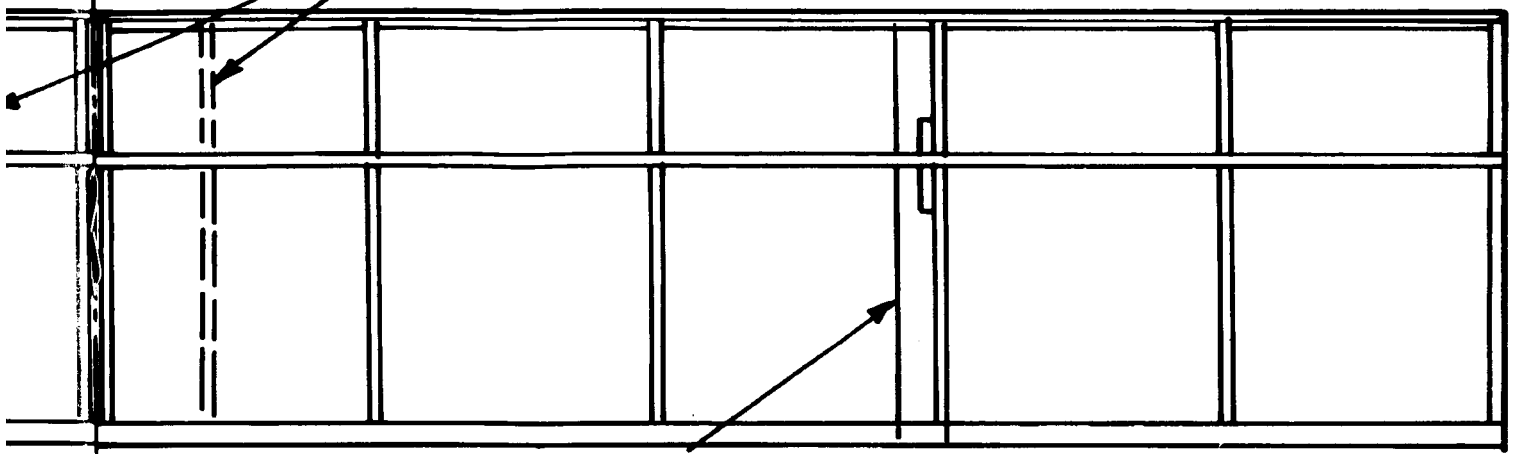
.025" M. W.

A FUN FLYER, MEI
F.A.C. EMBRYO RUL

BY AL BACKSTROM

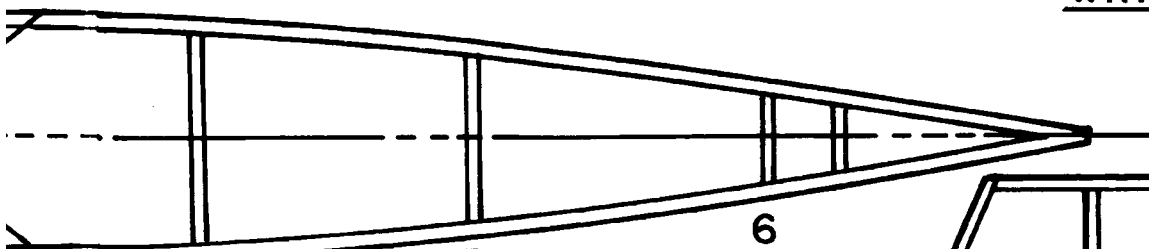
BORN LOSE

LOWER WING RIBS



CARD STOCK, TOP OF LOWER WING
BOTTOM OF UPPER WING

3/4" DIHEDRAL - EACH WING

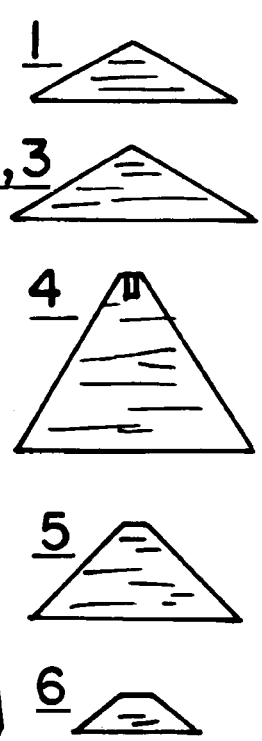


1/16" x 1/8" Balsa

3/32" ALUM. TUBE

FIN

1/16" SQ. Balsa



1/16" Balsa FORMERS

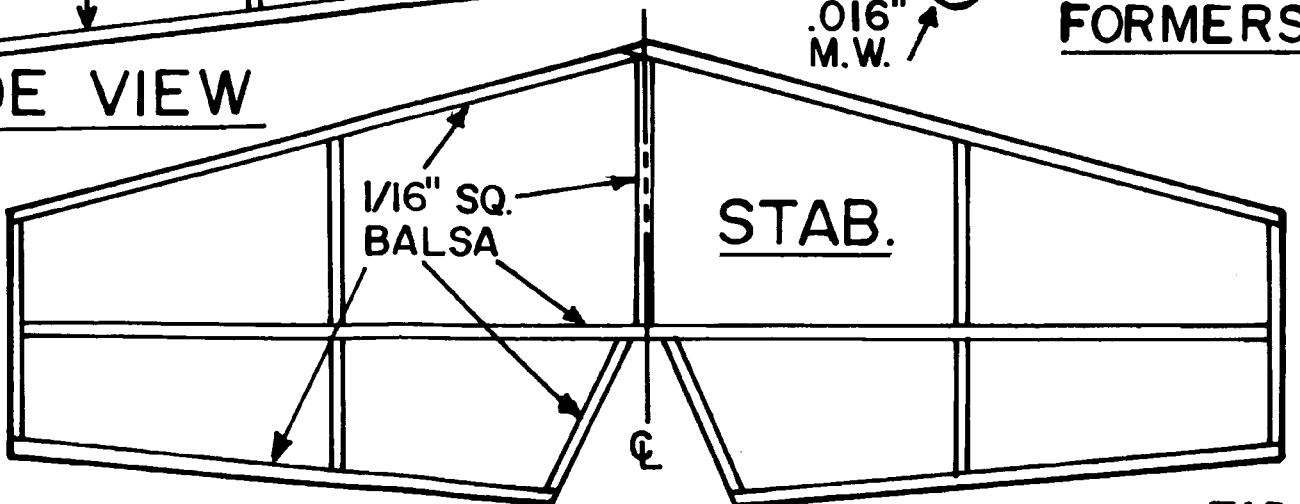
.016" M.W.

SIDE VIEW



MEETS RULES

SER



STAB.

1/16" SQ. Balsa

JAD