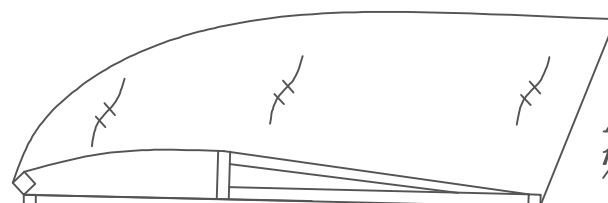
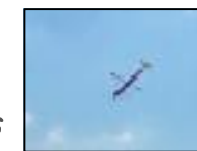


All Fuse Longerons
and Cross Members
 $\frac{3}{32}$ " Square

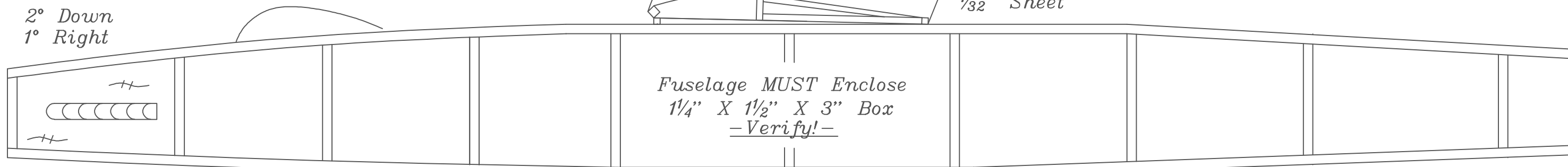


All Tip Plates
 $\frac{1}{32}$ " Sheet



Pop-Up Wing DT
Recommended

2° Down
1° Right



Fuselage MUST Enclose
1/4" X 1/2" X 3" Box
-Verify!-

Designed2spec

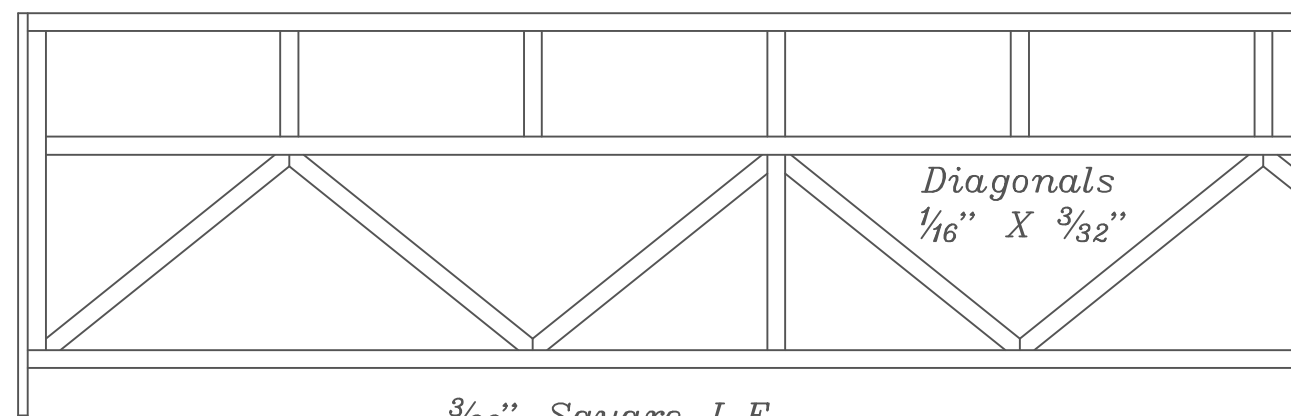
Embryo Endurance

Designed and Drawn by:

Bill Carney Sept 2013

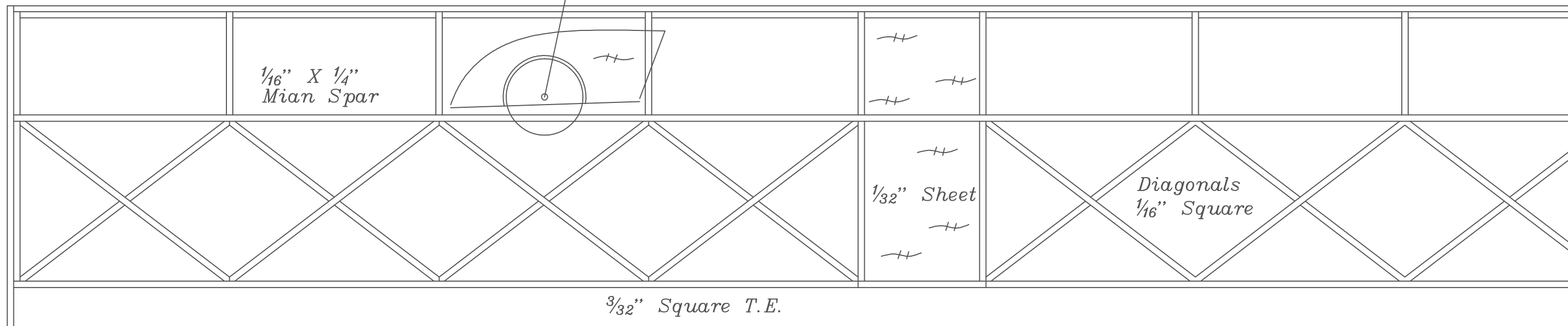
Page 1

Removeable
Landing Gear
.025" Music Wire



Diagonals
 $\frac{1}{16}$ " X $\frac{3}{32}$ "

$\frac{3}{32}$ " Square L.E.

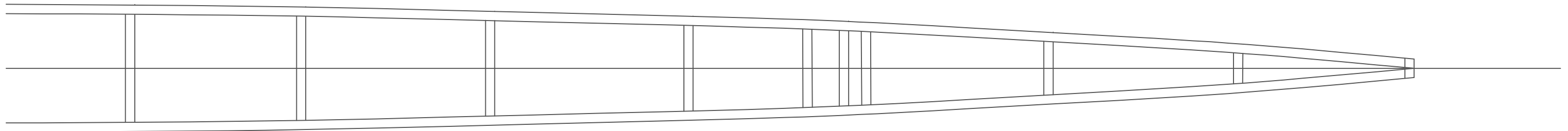


$\frac{1}{16}$ " X $\frac{1}{4}$ "
Main Spar

$\frac{1}{32}$ " Sheet

Diagonals
 $\frac{1}{16}$ " Square

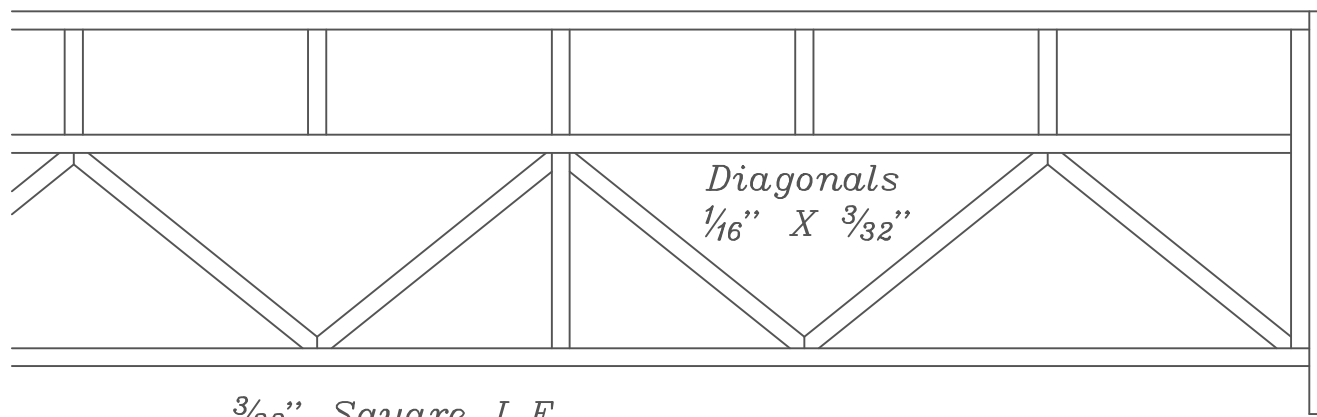
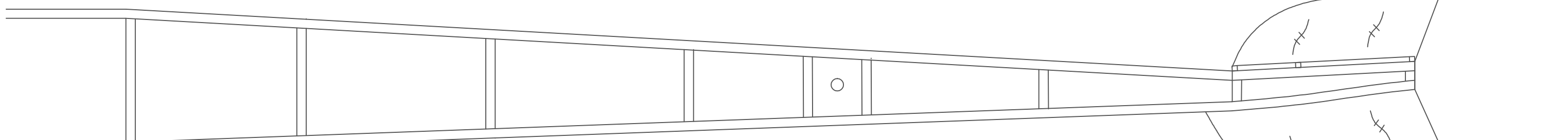
$\frac{3}{32}$ " Square T.E.



Tip Plates
Sheet

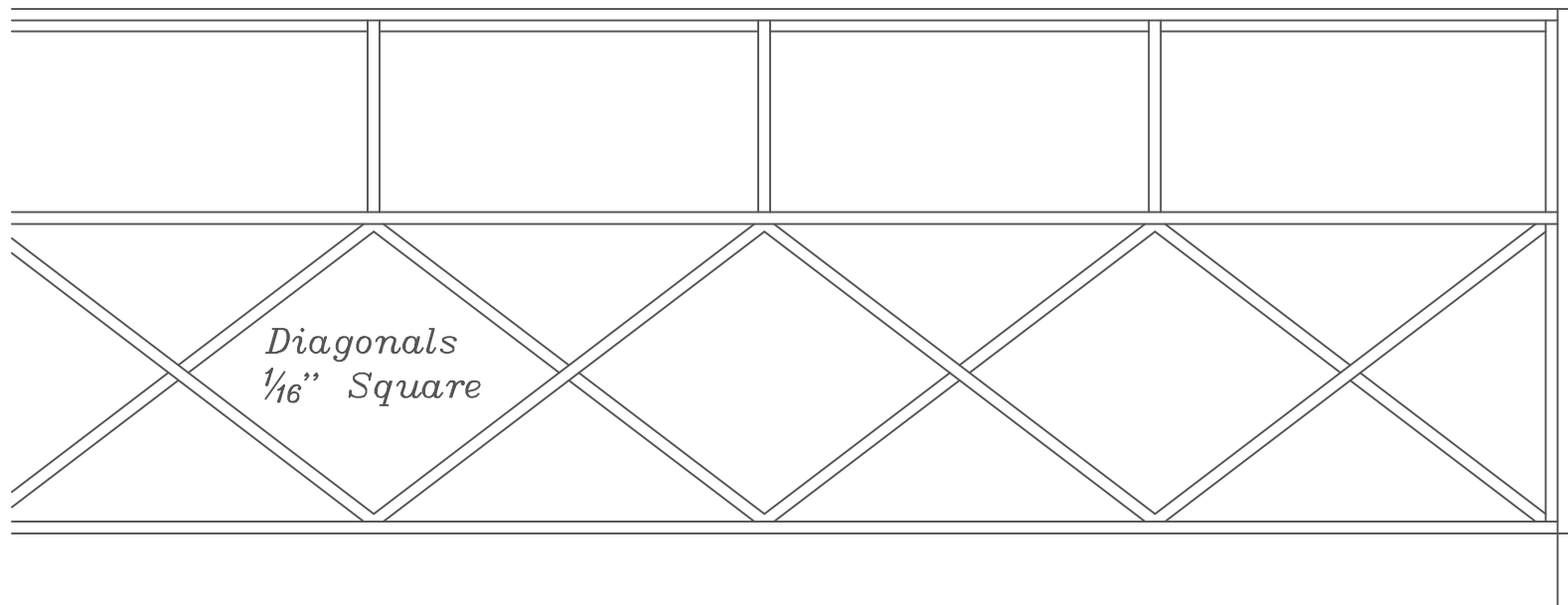


Pop-Up Wing DT
Recommended



Stab $\frac{3}{32}$ " Square
Except where noted

$\frac{3}{32}$ " Square L.E.



Designed2spec

Embryo Endurance

Designed and Drawn by:

Bill Carney Sept 2013

Page 2



*Original Model
Weighs 19 Grams*