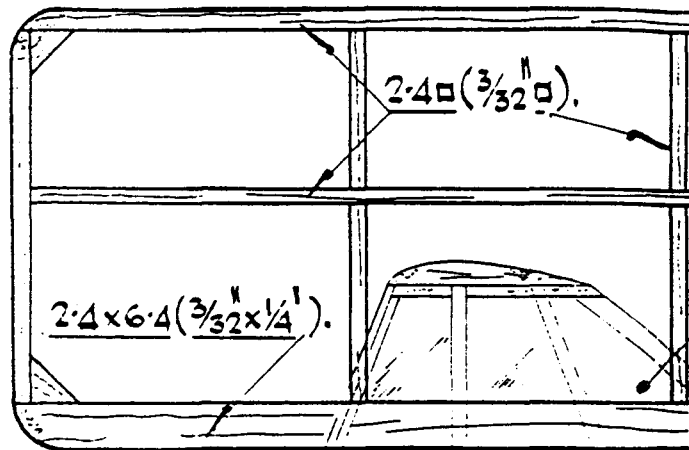
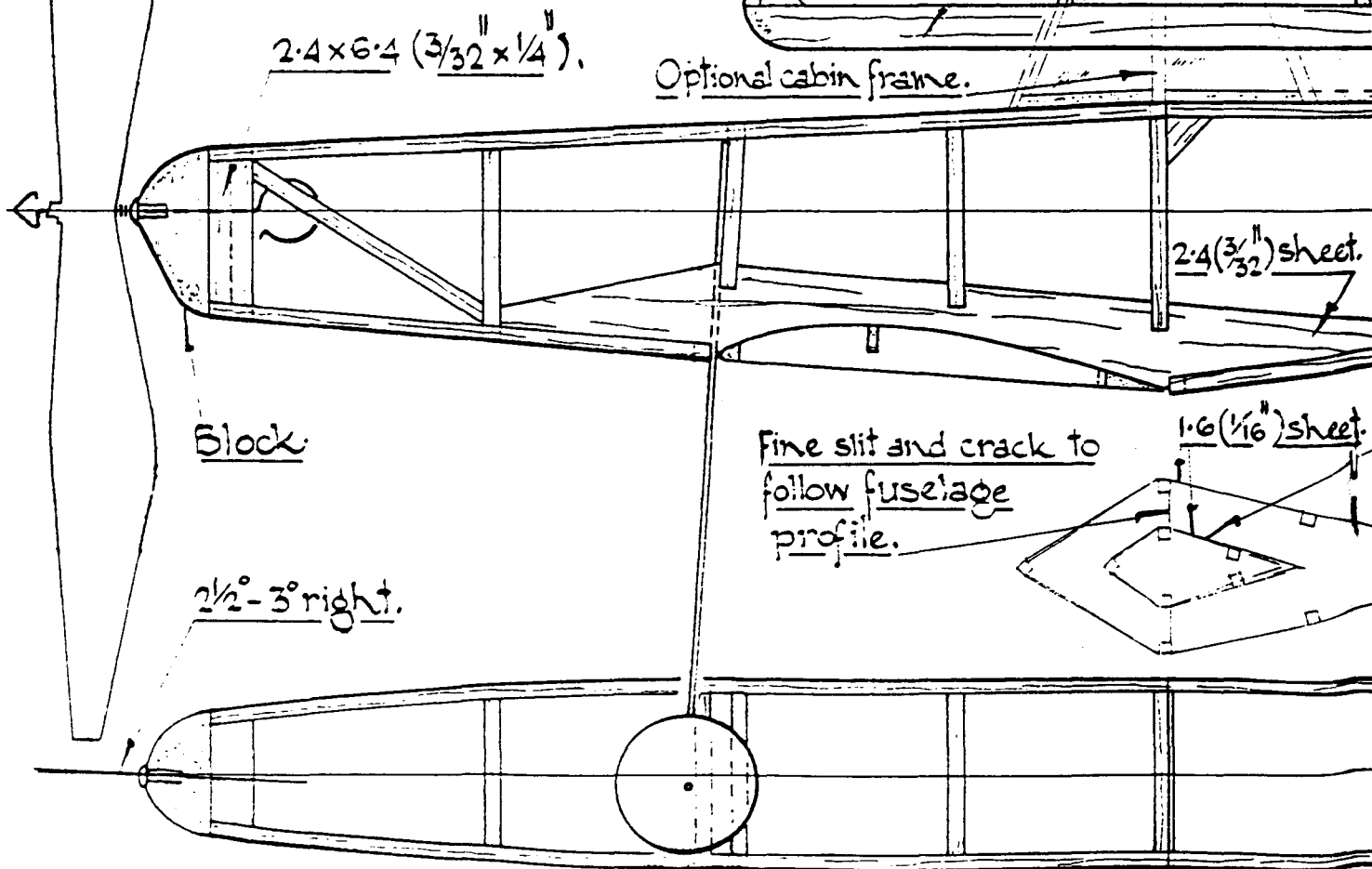
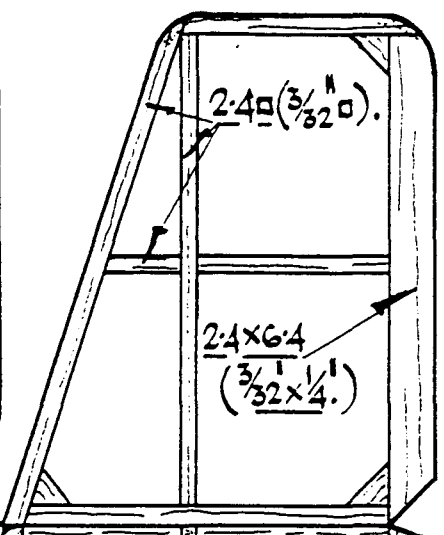
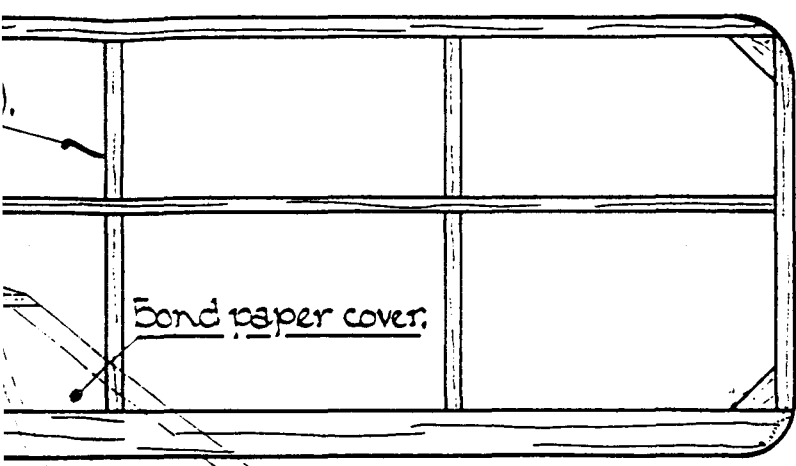
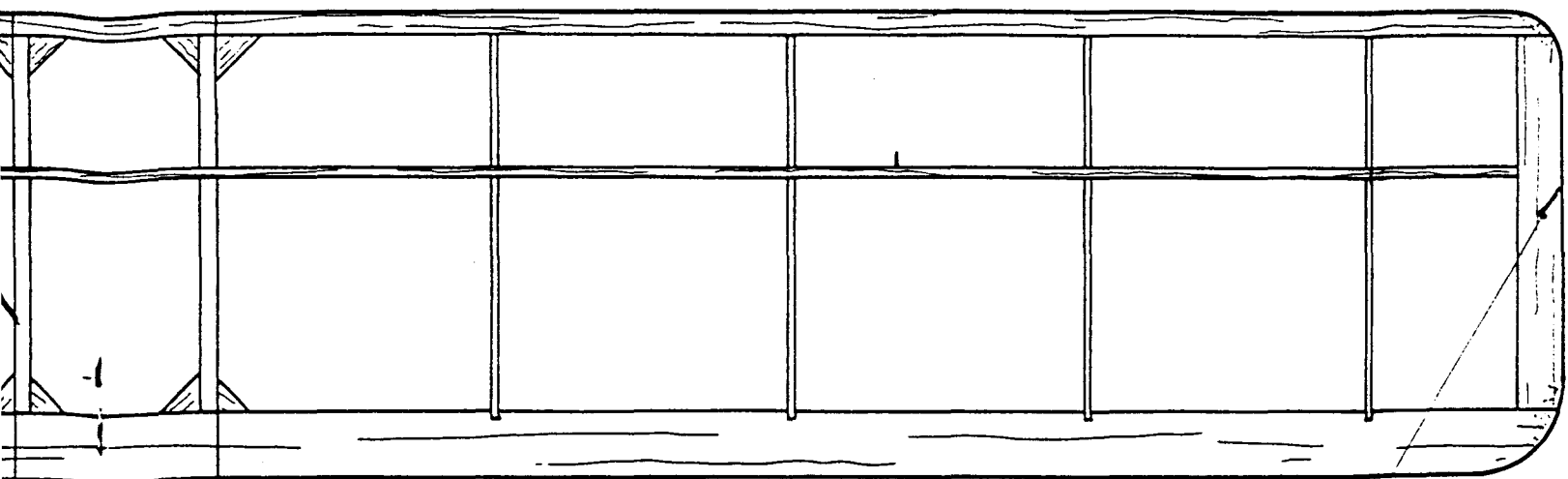


Propeller: preferably 6" TERN.
Power: 1 loop $\frac{3}{16}$ " rubber.
 This is a slow flier, so keep its weight down. Use light tissue and very thin dope.



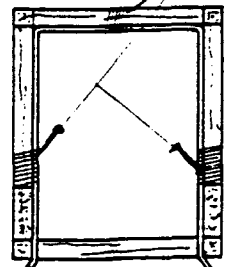
Optional cabin frame.



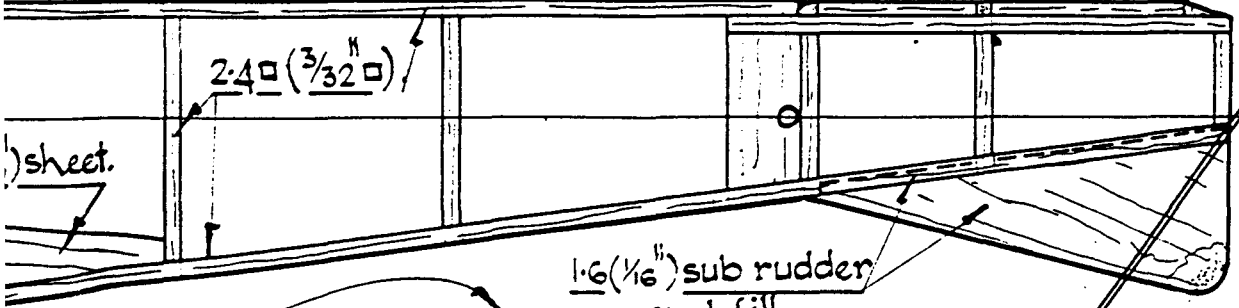


Dihedral: 40 (1 5/8")
per side.

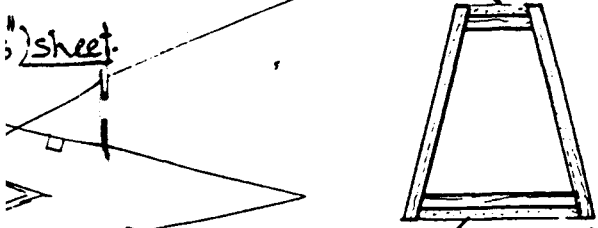
Bind and glue.



u/c pattern.



With flashy tissue
decoration, this is a truly
beautiful model. Let your
creativity run wild!



Main frame of
optional cabin. 1.60 (1/16")

THE MOPOKE

an old fashioned low winger

