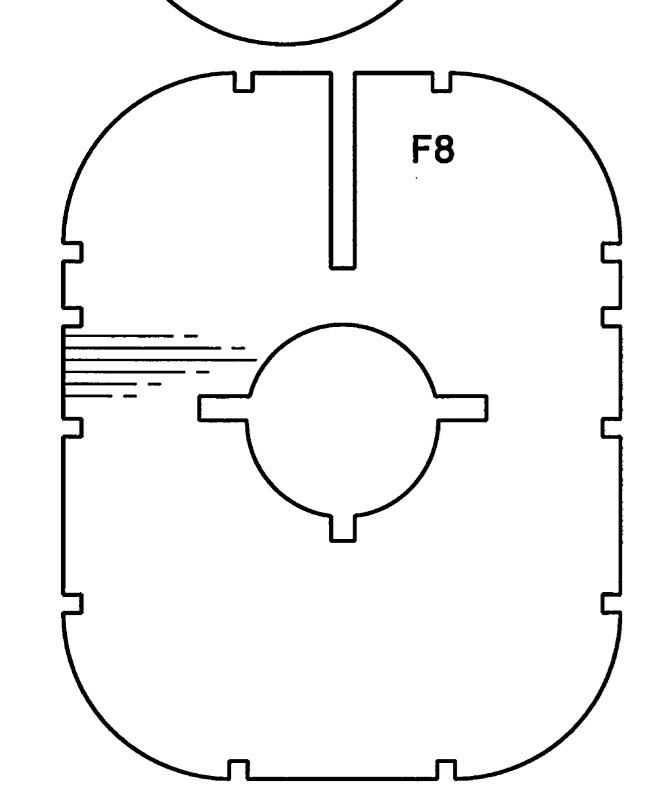
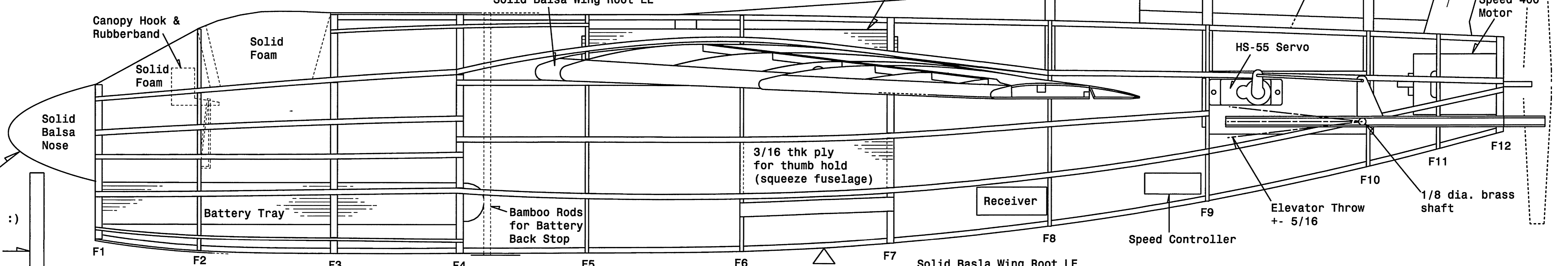
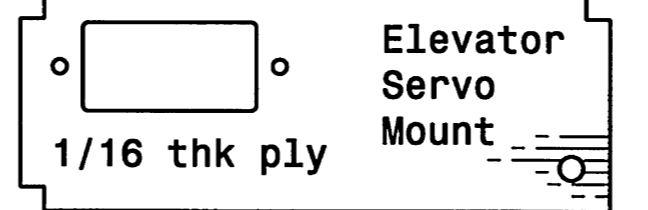
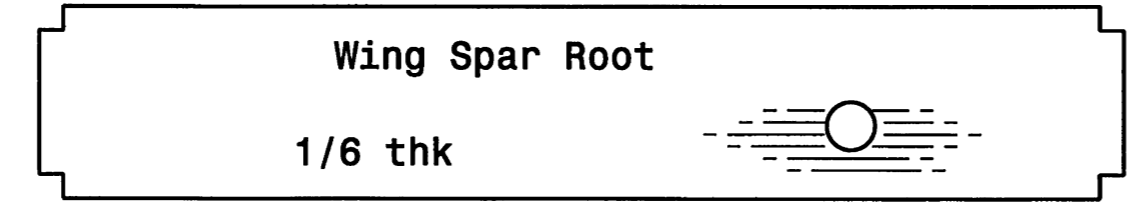


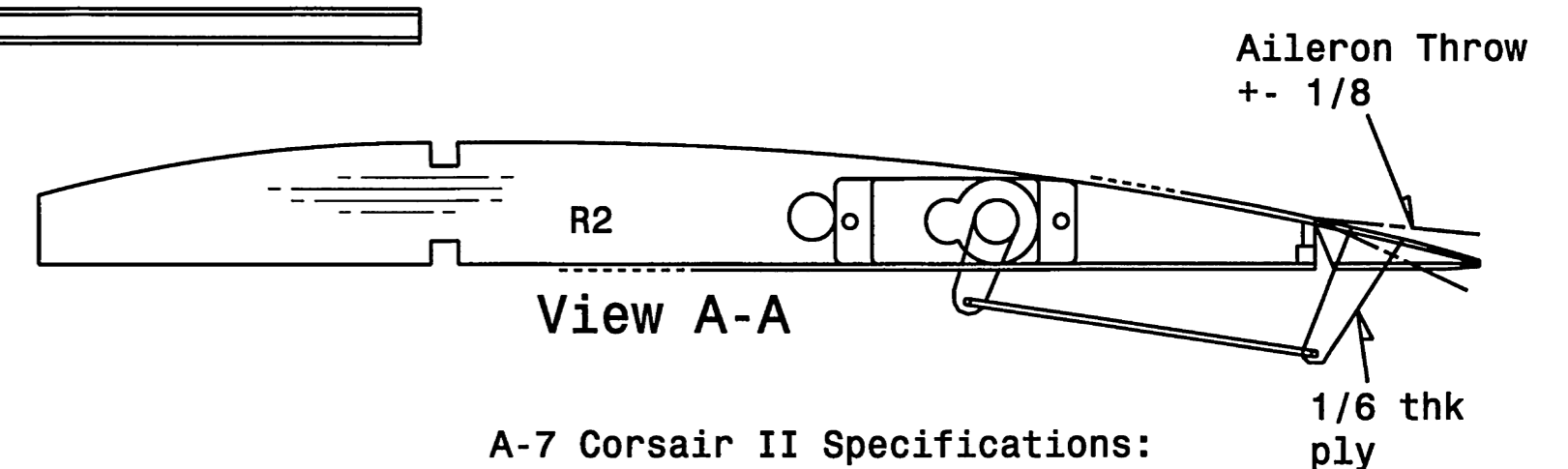
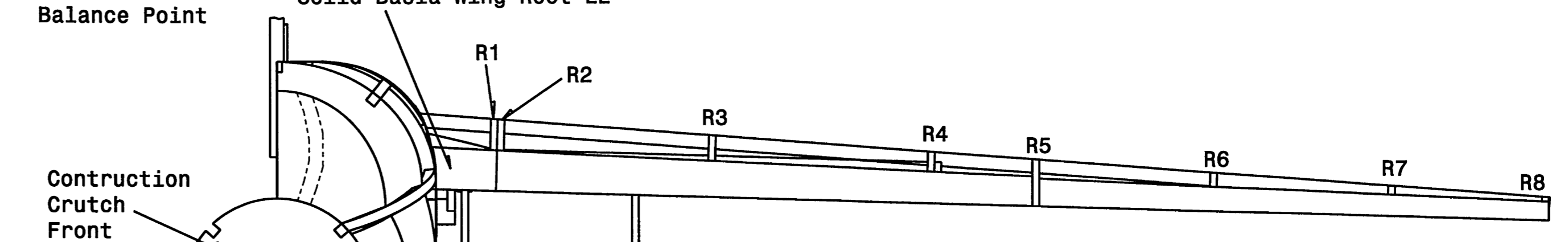
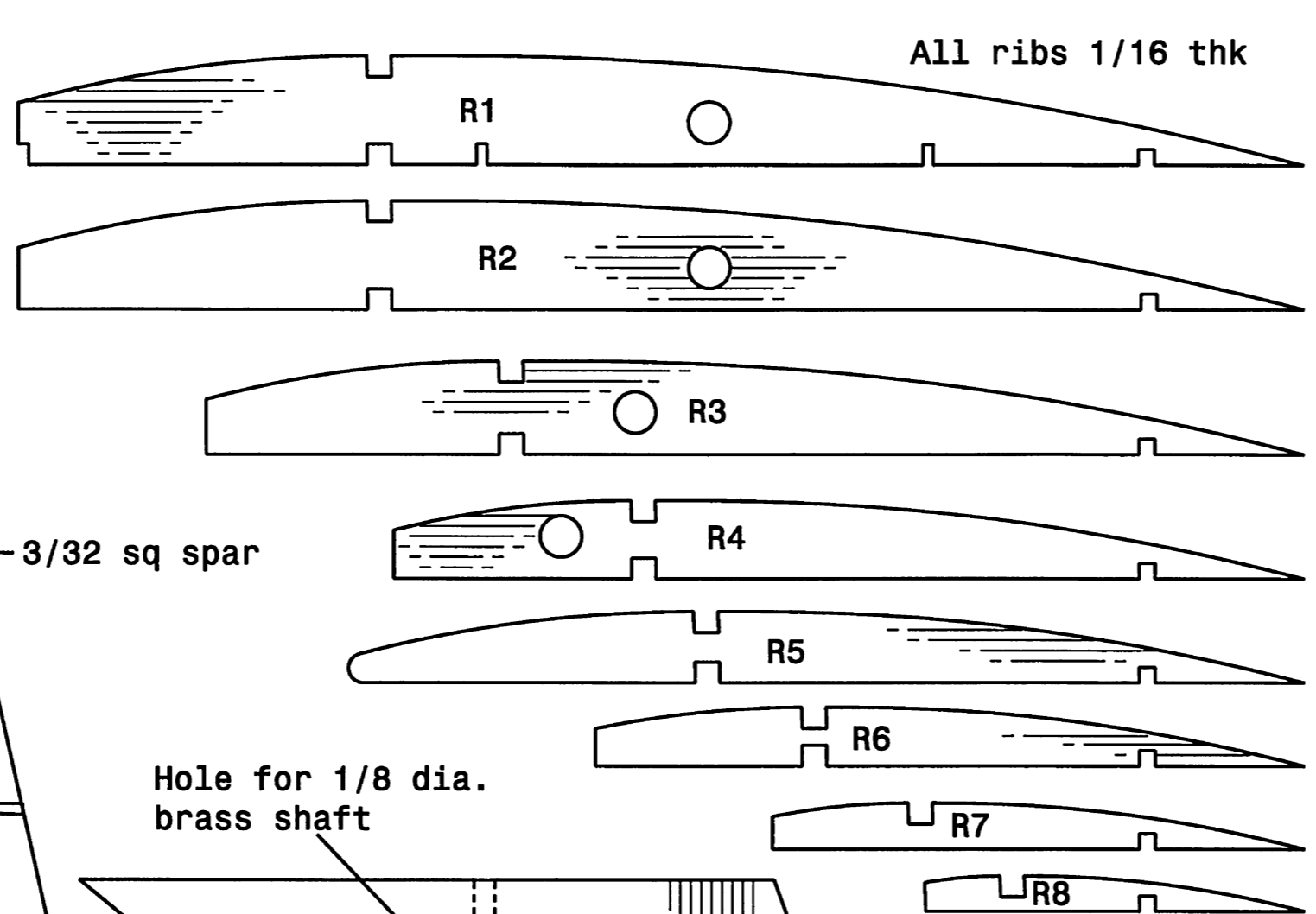
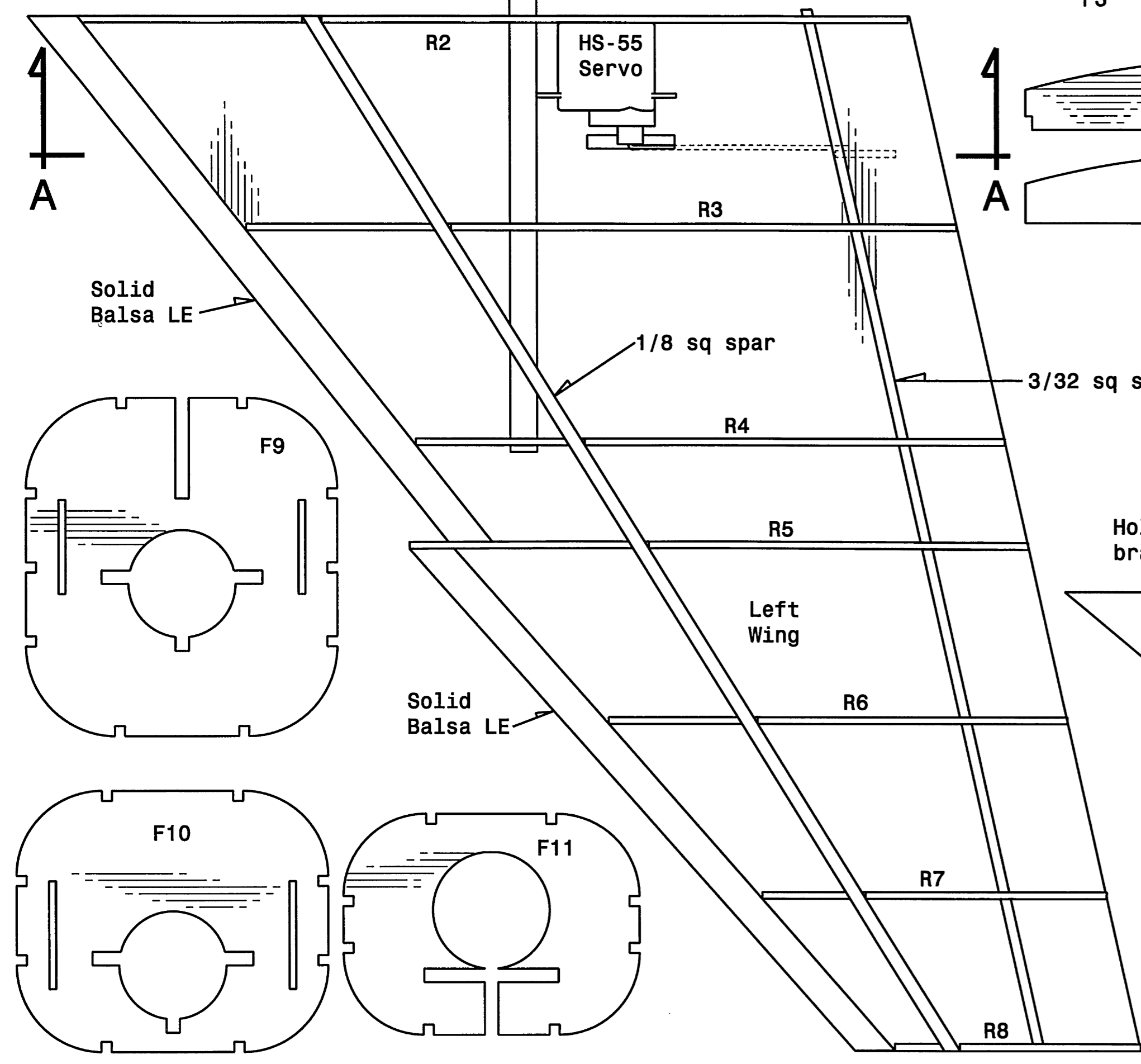
Note: Rudder and Elevators are similar in construction, with 1/8 thk center and 1/32 thk sheeting on both sides



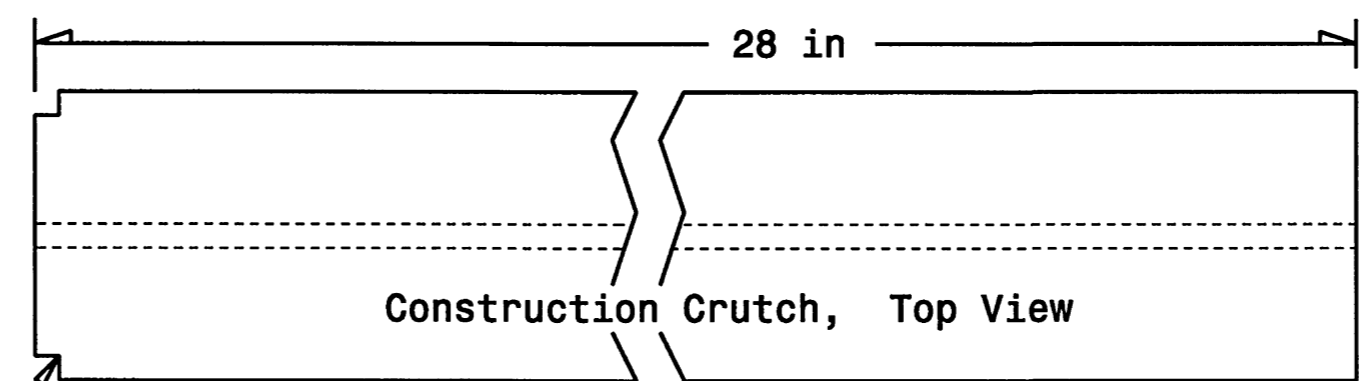
Note: All formers are 1/16 thk balsa, except as noted
All stringers are 3/32 sq



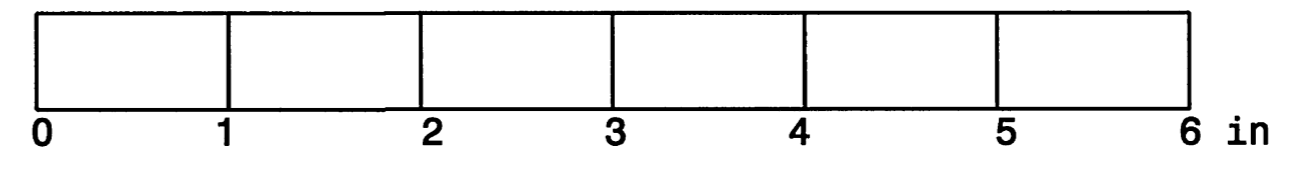
Can substitute nose for plastic Easter Egg :)
1/4 dia. CF spar



A-7 Corsair II Specifications:
Type: Electric Pusher Prop
Controls: Ailerons, Elevator, Speed Controller
Servos: 3 Hitec HS-55
Receiver: Hitec 555 Dual Conversion
Speed Controller: 6-10 Cell 18 Amp
Batteries: 8 cell, 600 AE (Nicads)
Motor: Speed 400 Direct Drive
Prop: Graupner CAM 5x5
Flying Weight: 17.6 oz
Wing Loading: 18.8 oz/sq ft



F1 goes here (Do not glue formers to construction crutch)



| | |
|--|-----------------|
| Vought A-7 Corsair II (1/20 Scale) | |
| Wing Span: 23.5 in | Length: 27.7 in |
| Wing Area: 135 sq in | |
| Designed & Drawn: Copyright Le Phan 2004 | |
| E-Mail: chaokhoekhong@yahoo.com | |

02/16/04 LPH