

**6 Uncle Willie's**  
**North American F-86 Sabre**  
 Control Line, 41" Wing Span, 20" Length, DYNA-JET Powered

an UNCLE WILLIES PLAN  
[WWW.MYUNCLEWILLIES.COM](http://WWW.MYUNCLEWILLIES.COM)  
[WWW.MYUNCLEWILLIESTOO.COM](http://WWW.MYUNCLEWILLIESTOO.COM)



**The North American F-86 Sabre**

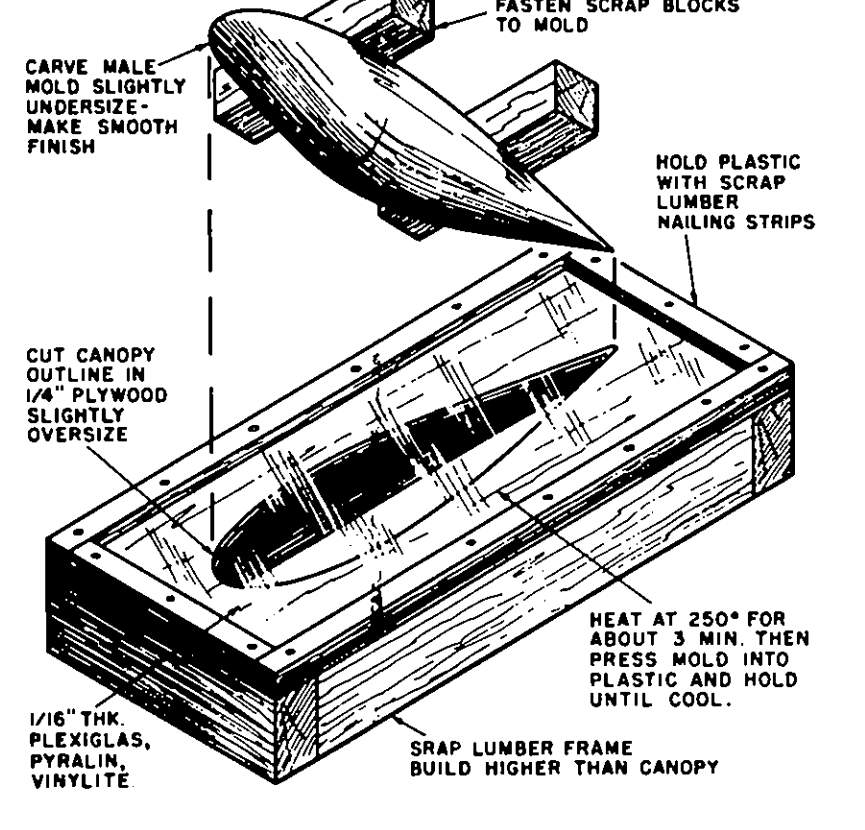
The first generation of jet combat aircraft, developed during World War II, offered higher performance than their piston-powered contemporaries, but were nowhere near the limits of jet technology. Even by the end of the war, new ideas were in circulation that would lead to a second generation with far better performance. One of the most prominent of these second-generation jet combat aircraft was the North American "F-86 Sabre". The F-86 Sabre was an elegant jet fighter, one of the mainstays of US forces in the war in Korea, and an important element in the defense of the West in the early years of the Cold War. It was built in large numbers and used by many of America's allies. This document provides a history and description of the Sabre, as well as its navalized "Fury" variants.

An offshoot of the F-86 program began when the US Navy and Marine Corps submitted a request for an evaluation variant of the F-86 Sabre, which they designated the FJ-2 Fury. This new airplane had an arresting hook, an extended nose gear, and a catapult hook. Later variants of the Fury improved on these features. The FJ-2 had folding wings, the FJ-3 had a deeper fuselage and more powerful engine, and the totally redesigned FJ-4 and FJ-4B attack aircraft bear only a passing resemblance to their predecessors.

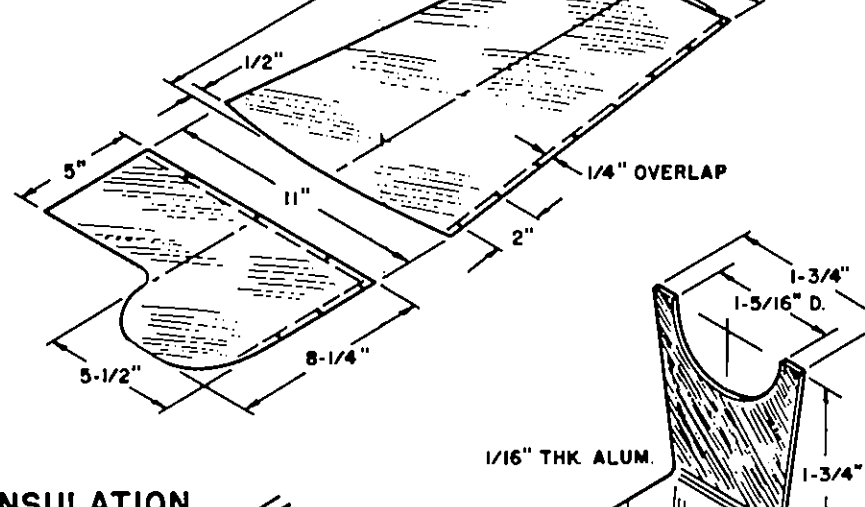
The F-86 saw extensive action in the Korean war, where it was often pitted against the slightly superior MIG-15. Despite the imbalance of capability in their airplanes, Sabre pilots were able to gain superiority over the MIGs. F-86s were exported to many nations around the world, and several live on as test and research aircraft and, of course, privately-owned warbirds.

**Specifications (F-86D):**  
 Engine: One 7,500-pound thrust afterburning General Electric J47-GE-17B or -33 turbojet  
 Weight: Empty 12,470 lbs., Max Takeoff 17,100 lbs.  
 Wing Span: 37ft. 1in.  
 Length: 40ft. 4in.  
 Height: 15ft. 0in.  
 Performance: Maximum Speed at Sea Level: 707 mph  
 Ceiling: 45,600 ft.  
 Range: 835 miles  
 Armament: 24 69.9-mm (2.75-inch) air-to-air rockets

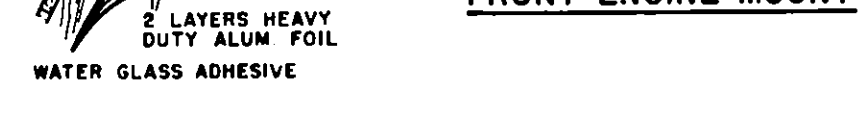
**MAKING THE BUBBLE CANOPY**



**BAFFLE TUBE PATTERNS**



**INSULATION DETAIL**

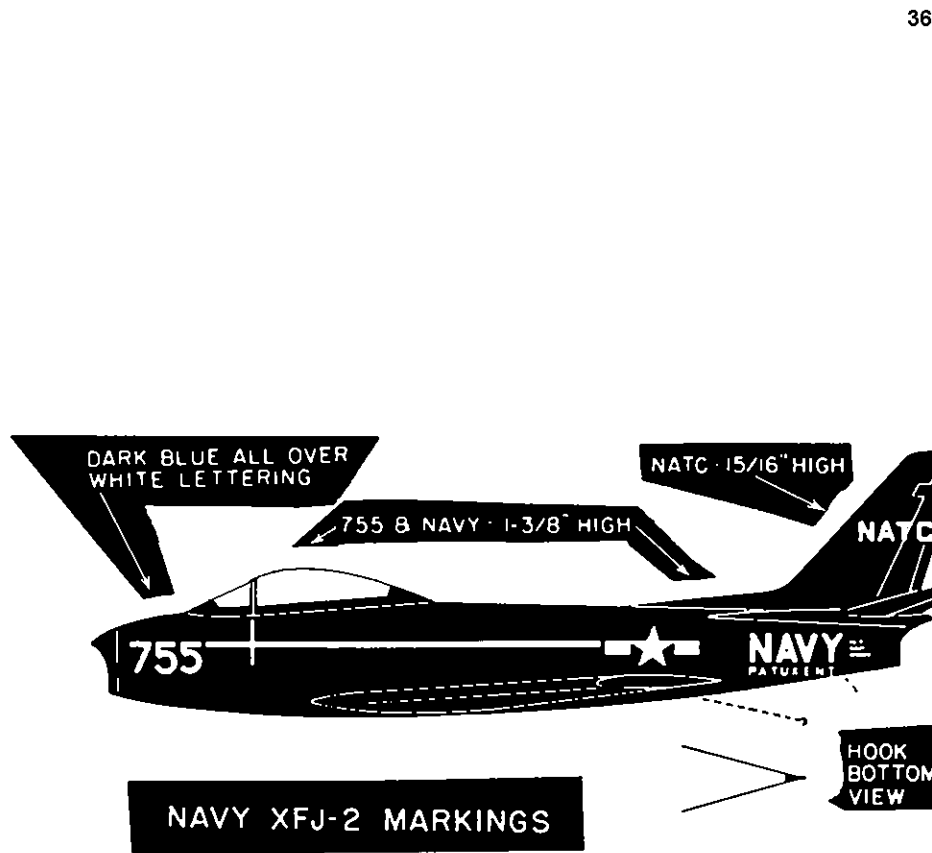


**FRONT ENGINE MOUNT**

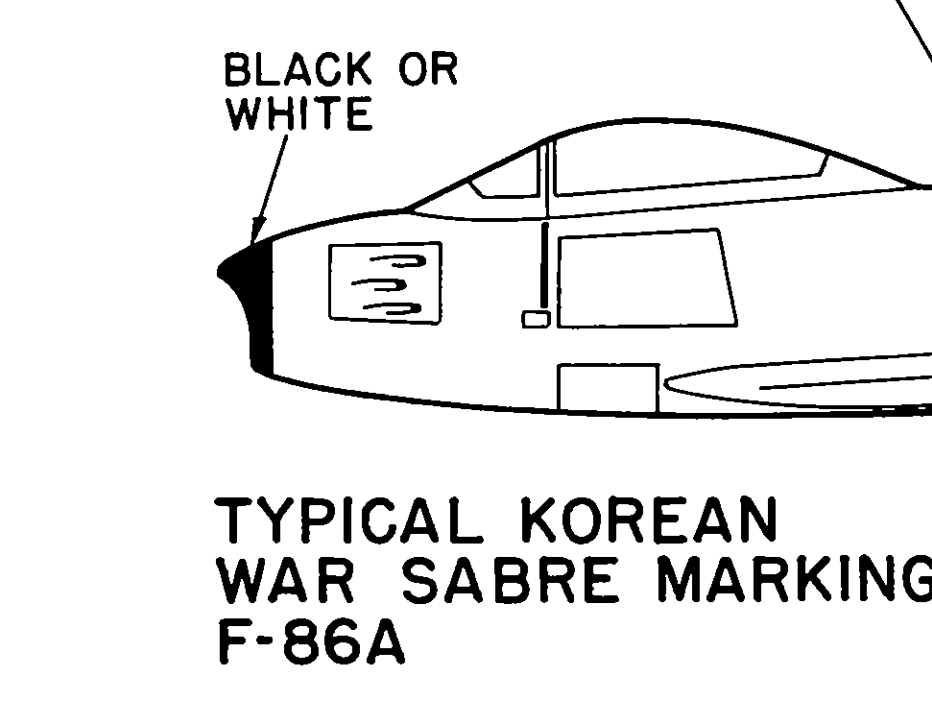


**UNCLIE WILLIES**

North American F-86 Sabre  
 Control Line Scale Plan  
 41" Wing Span  
 20" Length  
 DYNA-JET Powered



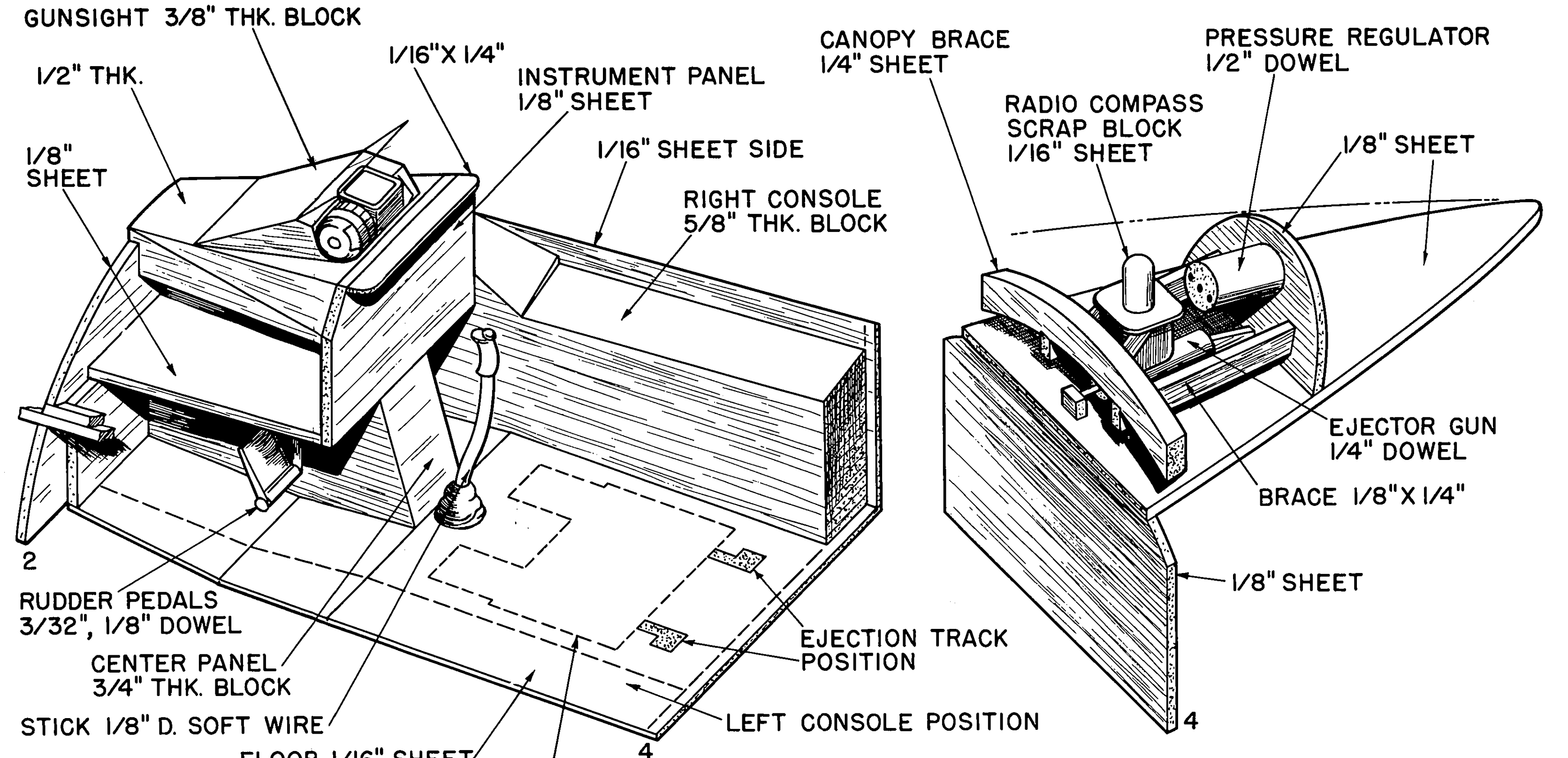
**TYPICAL KOREAN WAR SABRE MARKINGS F-86A**



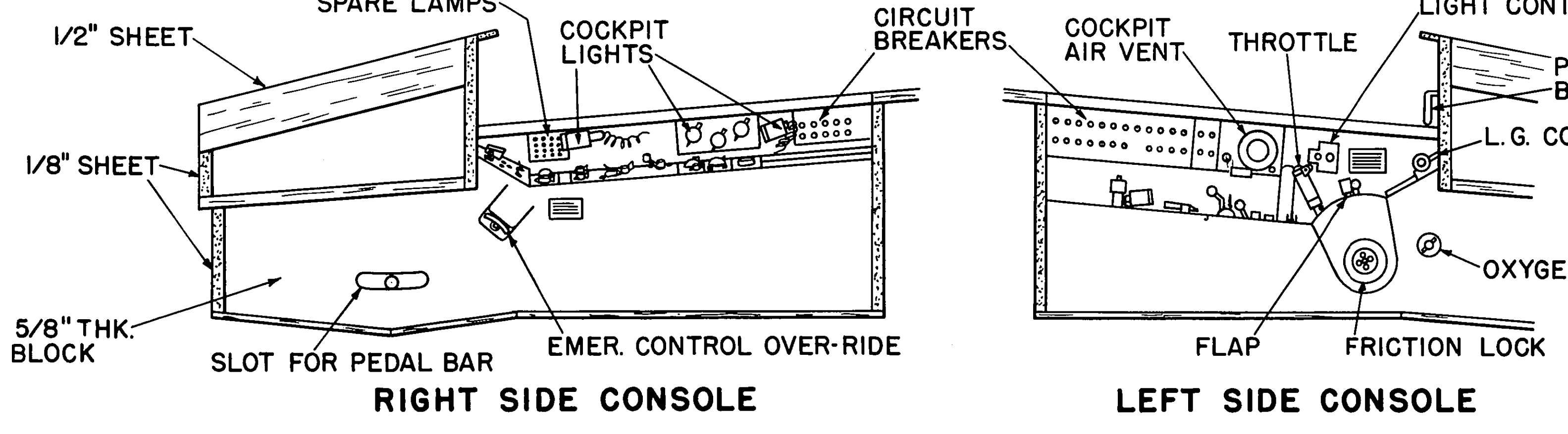
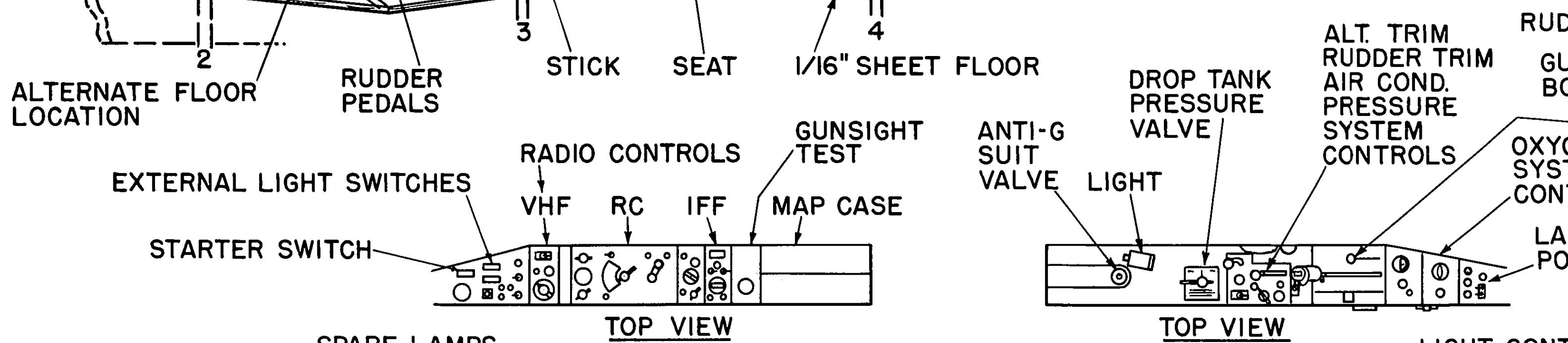
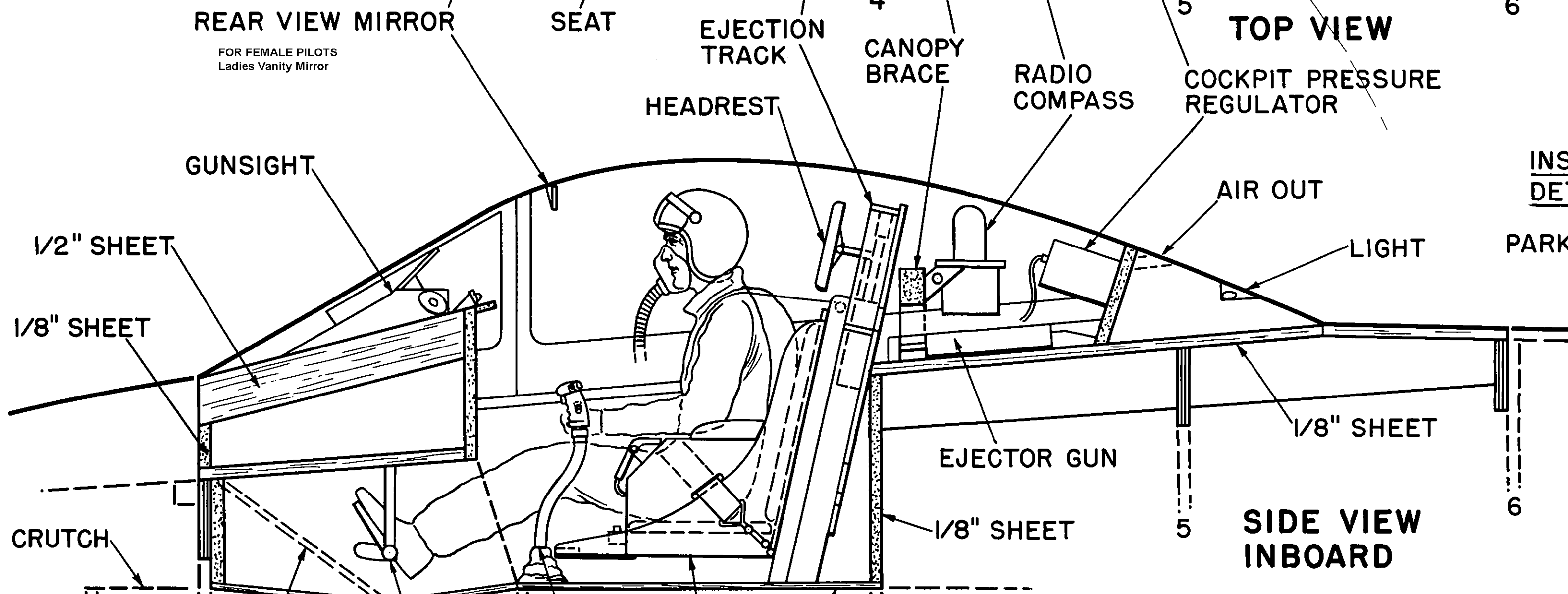
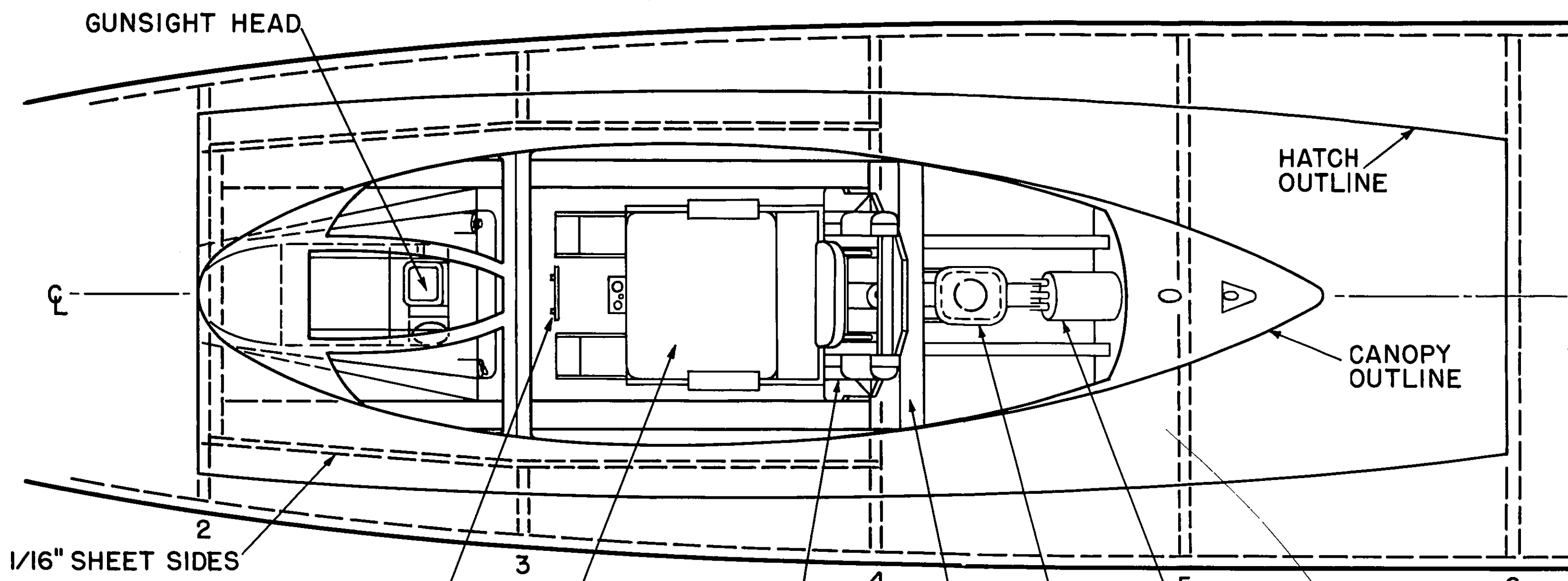
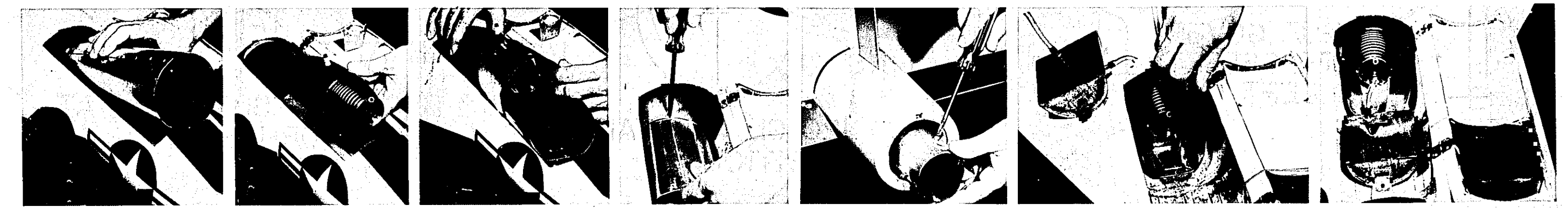
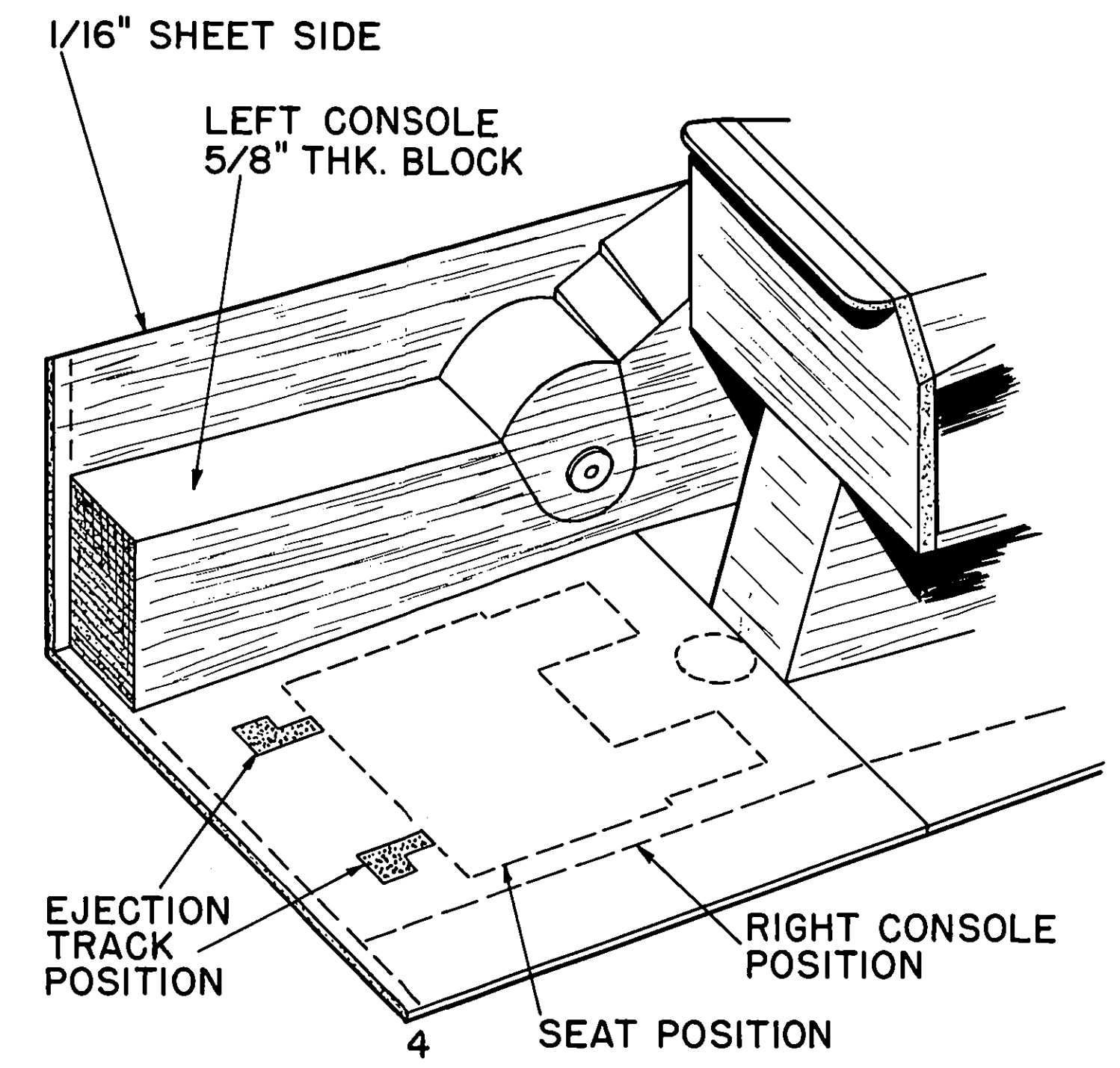
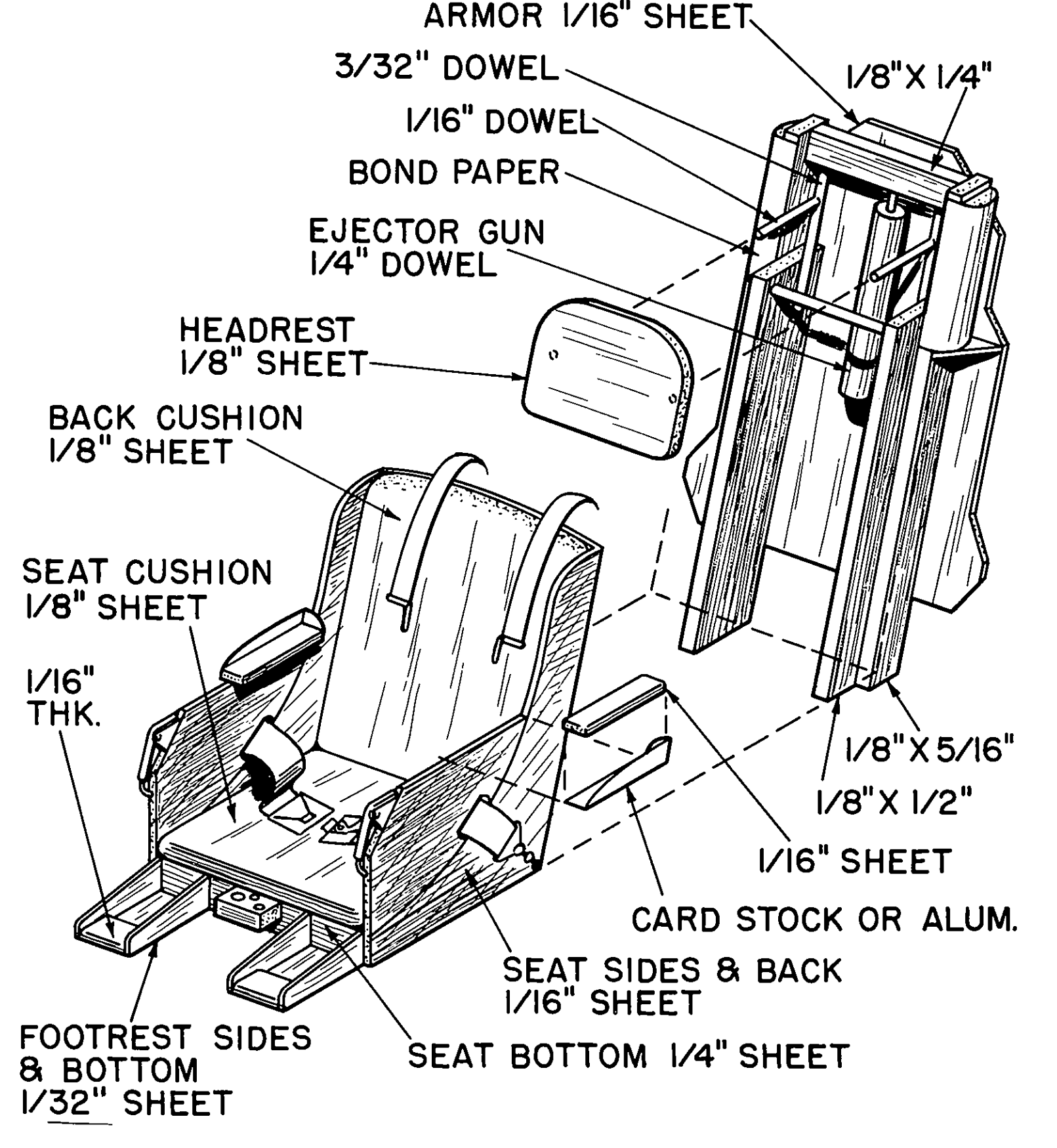
DIMENSIONS GIVEN FOR MODEL SIZE

**COCKPIT CONSTRUCTION DETAILS**

ISOMETRIC VIEWS



**SEAT CONSTRUCTION DETAIL**



**F-86 SABRE COCKPIT DETAILS**

**INSTRUMENTS - SEE BELOW**

- 1 ACCELEROMETER
- 2 HYDRAULIC PRESSURE
- 3 OIL PRESSURE
- 4 EXHAUST TEMP.
- 5 FUEL PRESSURE
- 6 MAGNETIC COMPASS
- 7 RADIO COMPASS
- 8 AIRSPEED INDICATOR
- 9 GYRO MAG. COMPASS
- 10 ATTITUDE GYRO
- 11 TACHOMETER
- 12 MACH METER
- 13 ALTIMETER
- 14 FUEL FLOWMETER & TOTALIZER
- 15 VOLTMETER
- 16 ELECTRICAL LOADMETER
- 17 CLOCK
- 18 TURN & BANK INDICATOR
- 19 RATE OF CLIMB INDICATOR
- 20 FUEL QUANTITY GAGE
- 21 CABIN PRESSURE ALTIMETER

