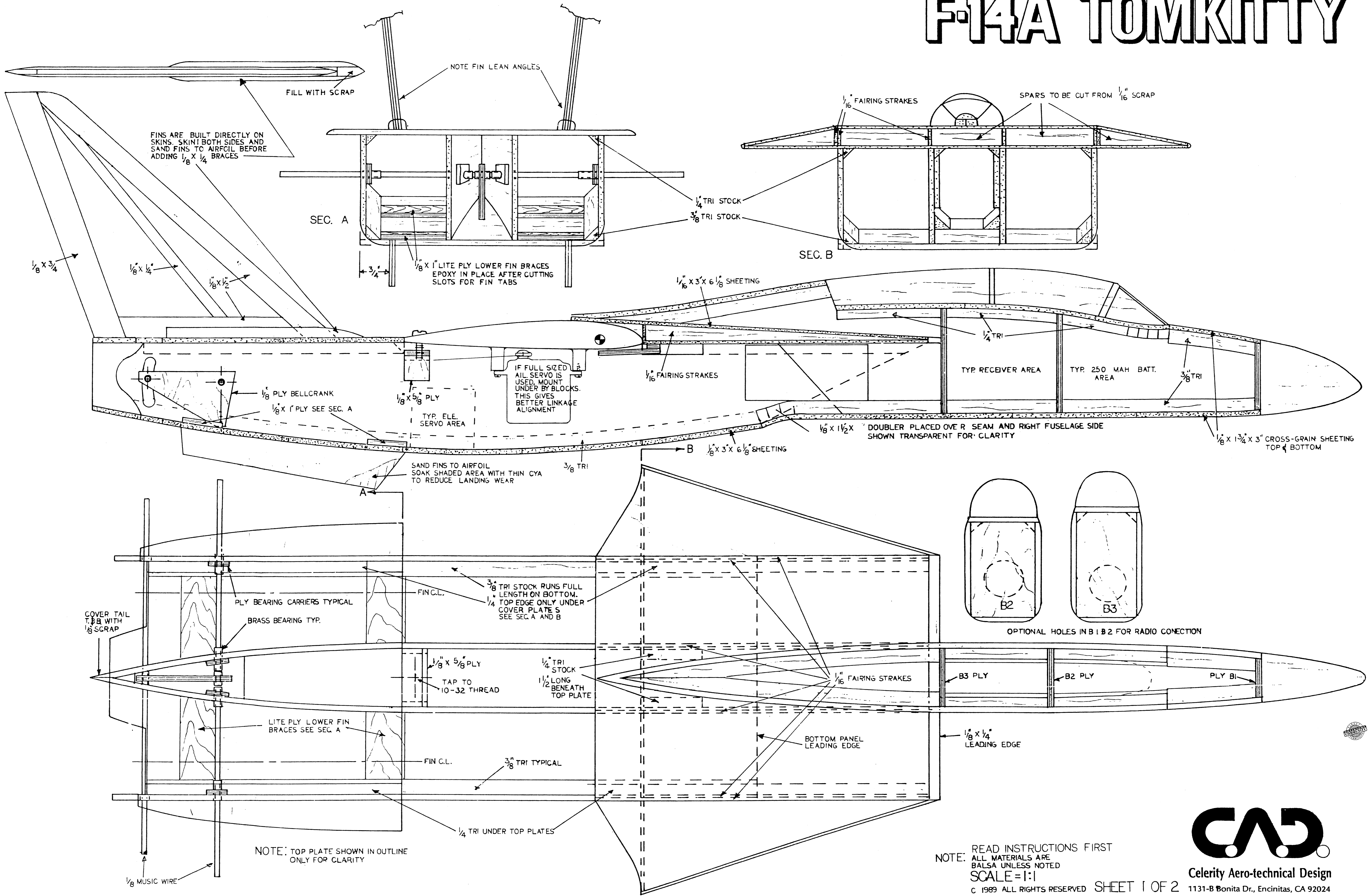


F4A TOMKITTY



FINS ARE BUILT DIRECTLY ON SKINS. SKIN BOTH SIDES AND SAND FINS TO AIRFOIL BEFORE ADDING 1/8 x 1/4 BRACES

NOTE FIN LEAN ANGLES

SEC. A

SEC. B

IF FULL SIZED AIL. SERVO IS USED, MOUNT UNDER BY BLOCKS. THIS GIVES BETTER LINKAGE ALIGNMENT

DOUBLER PLACED OVER R SEAM AND RIGHT FUSELAGE SIDE SHOWN TRANSPARENT FOR CLARITY

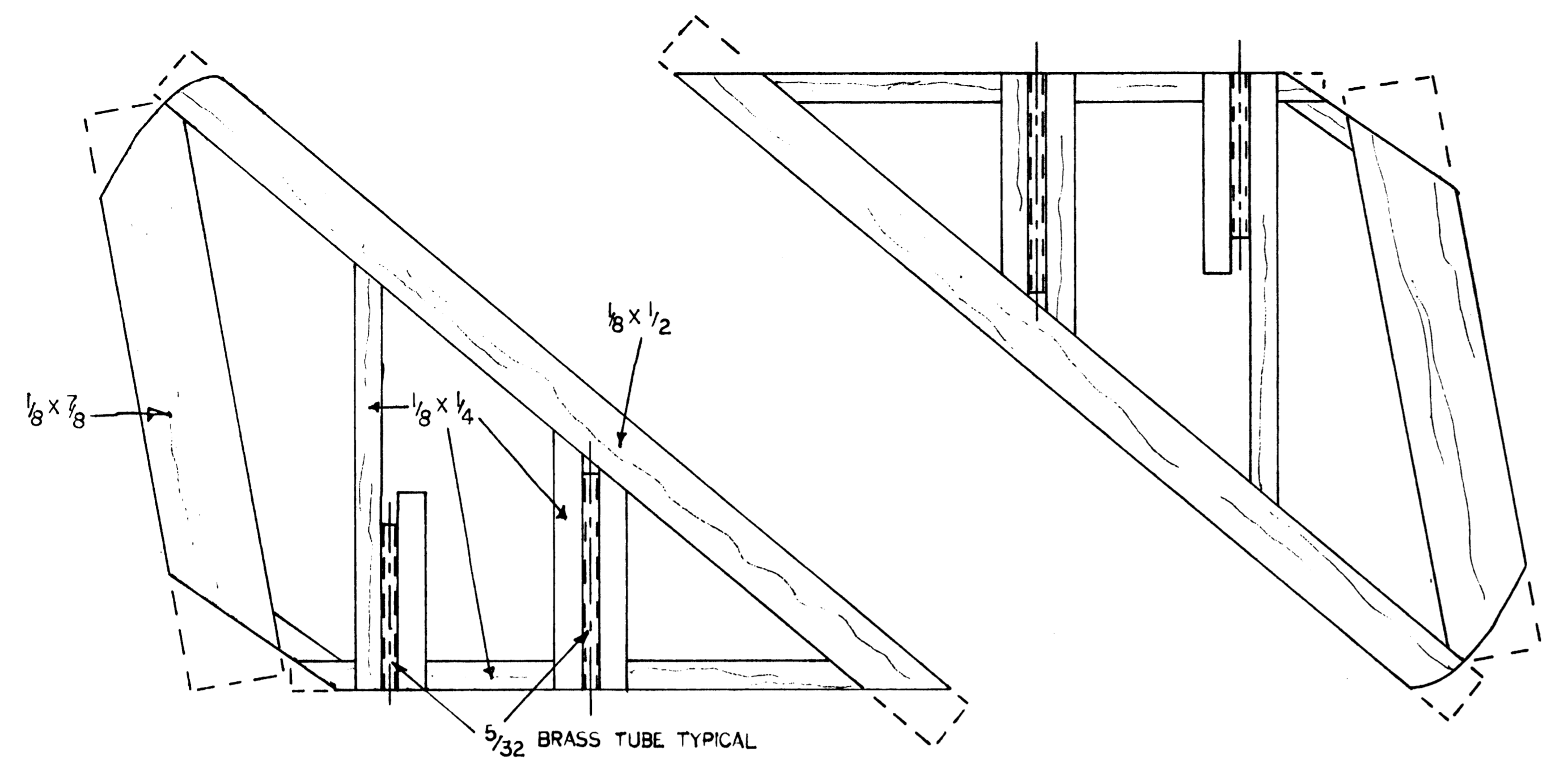
OPTIONAL HOLES IN B1 B2 FOR RADIO CONNECTION

NOTE: TOP PLATE SHOWN IN OUTLINE ONLY FOR CLARITY

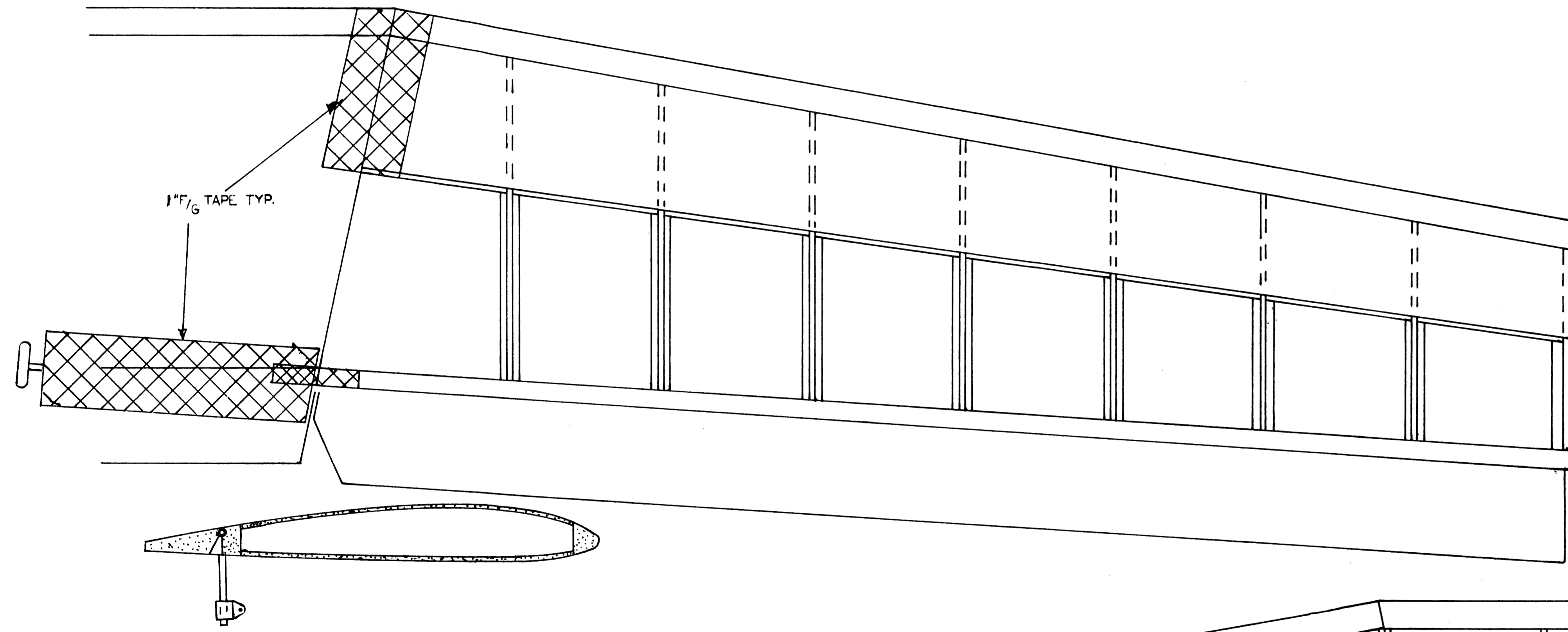
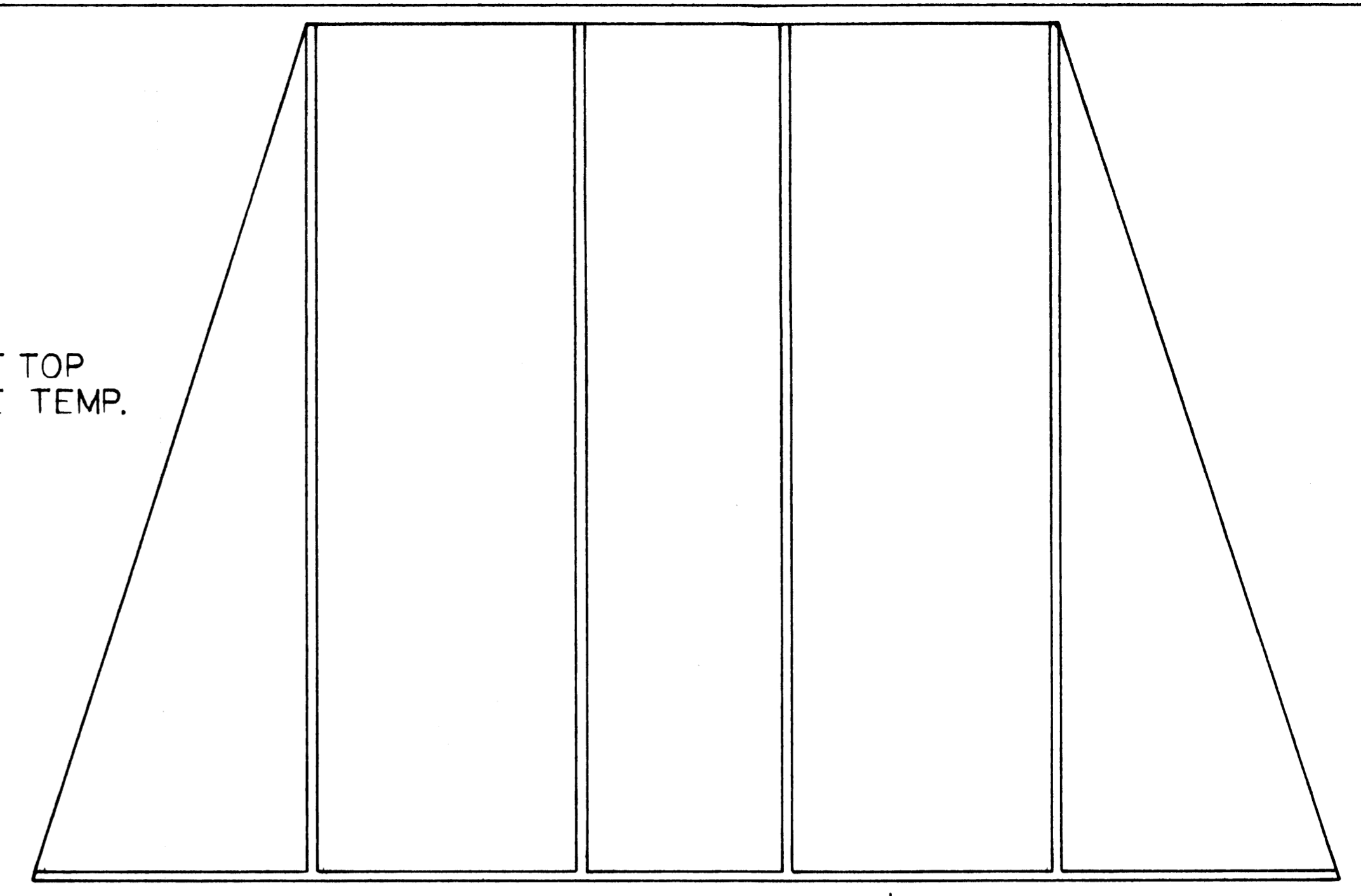
NOTE: READ INSTRUCTIONS FIRST
ALL MATERIALS ARE Balsa UNLESS NOTED
SCALE = 1:1



Celerity Aero-technical Design
1131-B Bonita Dr., Encinitas, CA 92024



FRONT TOP
PLATE TEMP.



REAR TOP
PLATE TEMP.

