

FORMERS F5, F6 & F8 TO F12 ARE BUILT FROM 4 'QUARTER PIECES'. CUT QUARTER PIECES FROM THE TEMPLATE ON SHEET 3 AND PIN OVER FORMER DETAILS SHOWN ABOVE. GLUE ONLY THE HORIZONTAL JOIN SUCH THAT SEPARATE LEFT AND RIGHT FORMER HALVES ARE CREATED. BEFORE REMOVING FROM PLAN MARK ALL FORMERS WITH STRINGER POSITIONS.

1.5MM Balsa INFIL BETWEEN F10 AND TAIL T.E.

PIN UPPER, LOWER & TROUGH KEELS K1 TO K5 OVER SHADED AREAS OF PLAN. AFTER KEELS ARE IN PLACE ADD DOUBLER K2A AND HALF FORMERS F1 TO F12, THEN FIT PORT SIDE KEELS K6 & K7 FOLLOWED BY 1.5MM Sq STRINGERS. AFTER GLUE IS SET, REMOVE HALF FUSELAGE FROM PLAN & BUILD UP STARBOARD SIDE IN A SIMILAR SEQUENCE.

FORM OUTLET NOZZLE BY ROLLING 0.4MM PLY OVER 30mm DIA. FORMER AND CLADDING WITH SOFT 3mm Balsa

K2A & K2B DOUBLERS EACH SIDE OF KEEL TO FORM SLOTS FOR FIN

INFIL BETWEEN STRINGERS TO FORM SLOT FOR TAIL

TAIL ROOT FAIRING FROM SCRAP

LINE TROUGH WITH PAPER THEN ALUMINIUM FOIL BETWEEN F7 & F11

SPINE FAIRING FROM SOFT Balsa BLOCK CARVED AND HOLLOWED

WING ROOT STRINGER INFIL PIECES FIT ABOVE AND BELOW SIDE KEELS BETWEEN F6 AND F9

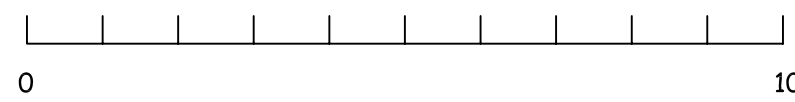
CANOPY MOULDED FROM ACETATE

PAPER TUBE MOTOR MOUNT WITH WIRE RETAINER CLIP

STRINGERS PART REMOVED FOR CLARITY

CARVE FROM SOFT Balsa BLOCK
 INFIL ALL BAYS BELOW THIS STRINGER F4 TO F5
 INLET FROM SOFT SHEET/BLOCK

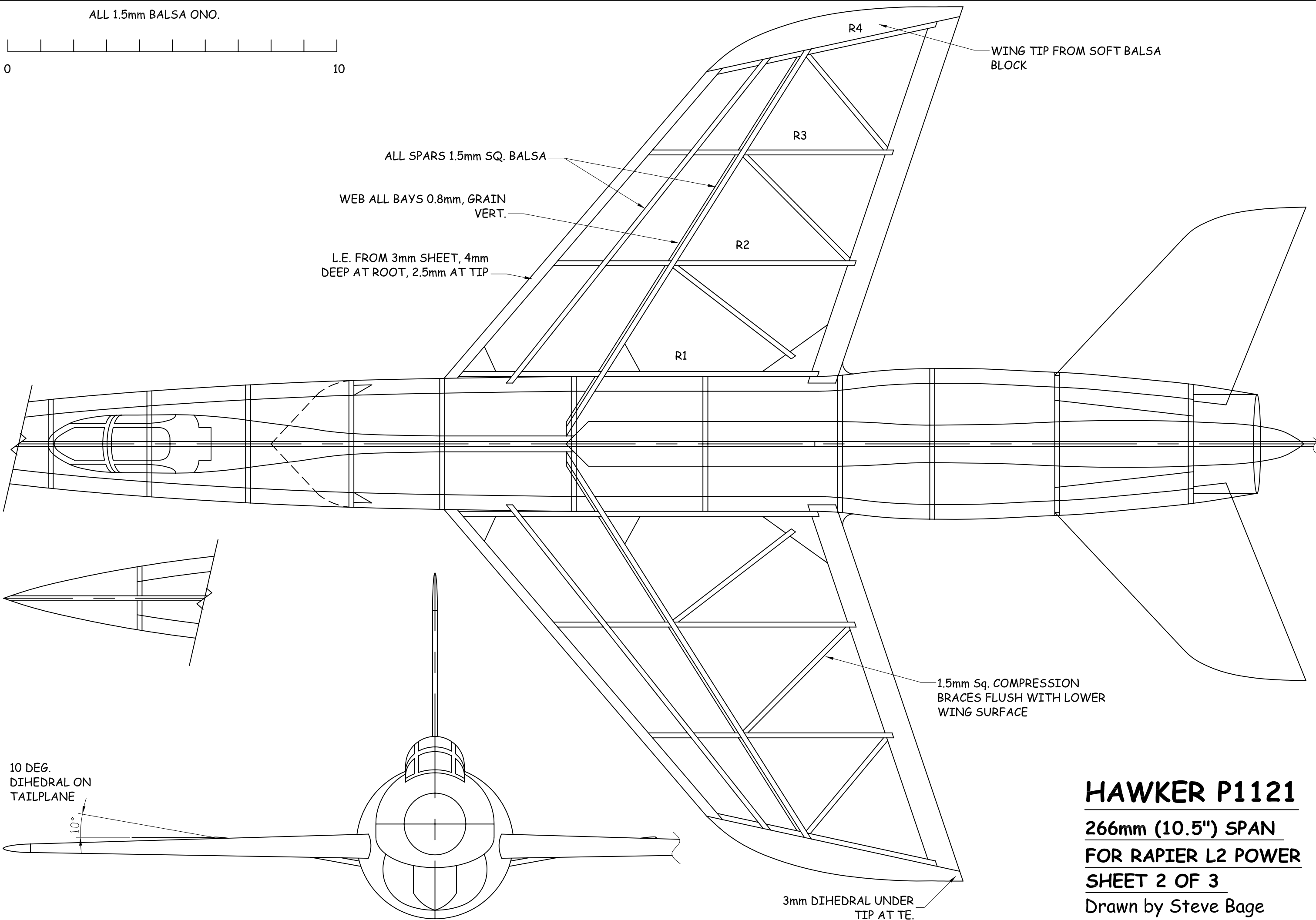
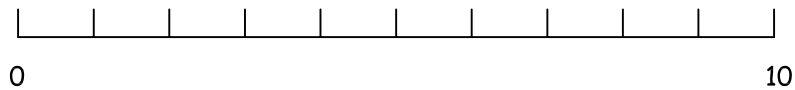
ALL 1.5mm Balsa ONO.



THE P1121 WAS DESIGNED BY SIR SYDNEY CAMM IN 1957 AS A STRIKE FIGHTER. POWERED BY A SINGLE GYRON OR OLYMPUS JET ENGINE IS HAD A MAXIMUM DESIGN SPEED OF MACH 2 AND A ZOOM CEILING OF 70,000FT. SADLY THE DESIGN NEVER MADE IT PAST THE FULL SIZE MOCK-UP STAGE AND IN THE MIDDLE OF GOVERNMENT SPENDING CUTS WAS ABANDONED IN 1959

HAWKER P1121
 266mm (10.5") SPAN FOR RAPIER L2 POWER
 SHEET 1 OF 3
 Drawn by Steve Bage

ALL 1.5mm Balsa ONO.



WING TIP FROM SOFT Balsa BLOCK

ALL SPARS 1.5mm SQ. Balsa

WEB ALL BAYS 0.8mm, GRAIN VERT.

L.E. FROM 3mm SHEET, 4mm DEEP AT ROOT, 2.5mm AT TIP

R4

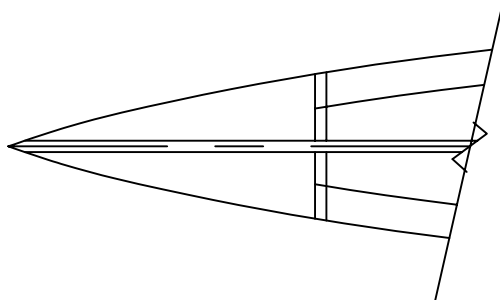
R3

R2

R1

1.5mm Sq. COMPRESSION BRACES FLUSH WITH LOWER WING SURFACE

3mm DIHEDRAL UNDER TIP AT TE.



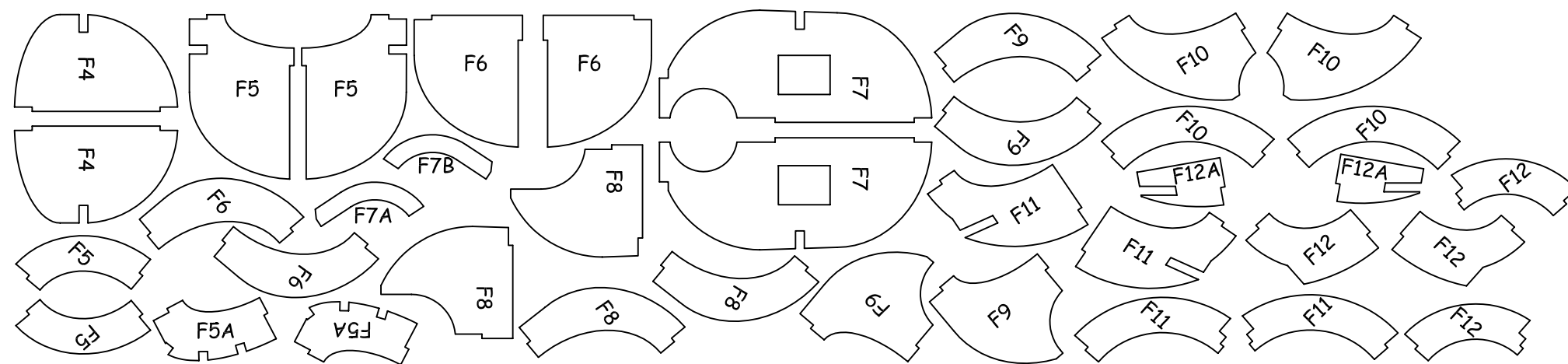
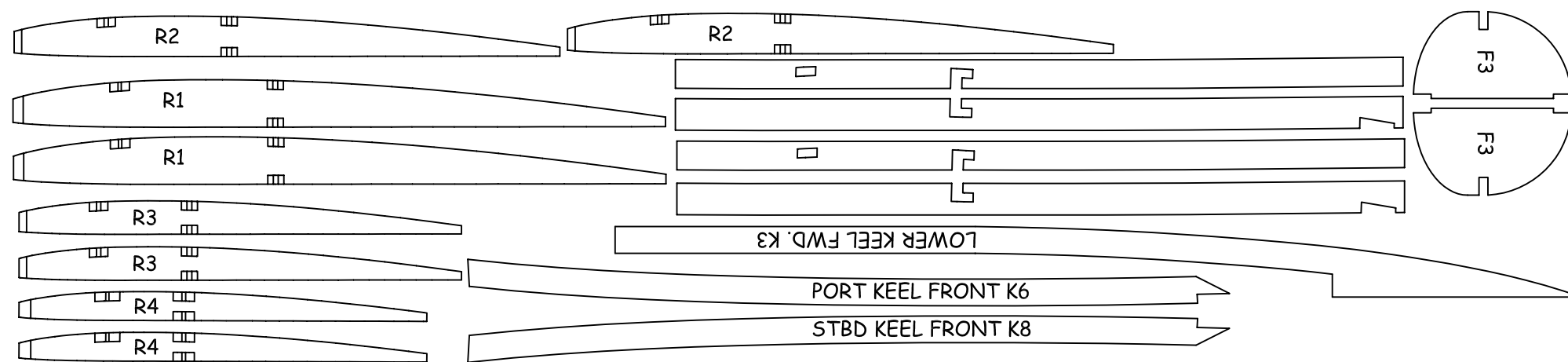
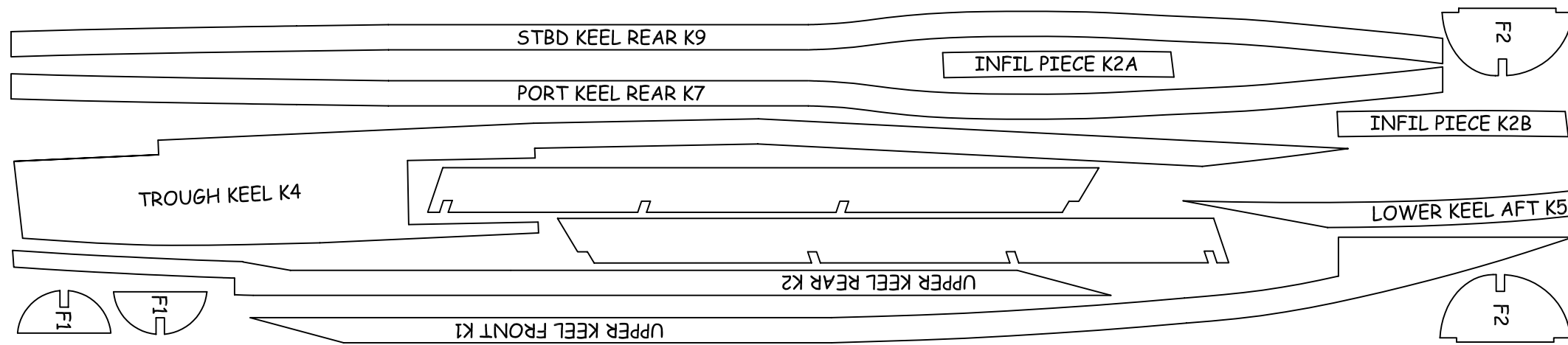
10 DEG. DIHEDRAL ON TAILPLANE

10°

HAWKER P1121

266mm (10.5") SPAN
FOR RAPIER L2 POWER
SHEET 2 OF 3

Drawn by Steve Bage

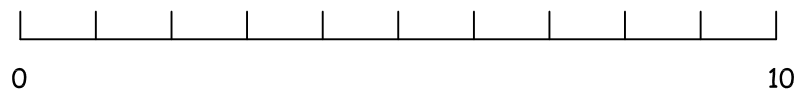


CHAMFER OVERLAPING AREAS



TEMPLATE FOR REAR NOZZLE FORMER - FROM 0.4mm (1/64") PLY

ALL 1.5mm Balsa ONO.



HAWKER P1121

266mm (10.5") SPAN FOR RAPIER L2 POWER

SHEET 3 OF 3

Drawn by Steve Bage

