

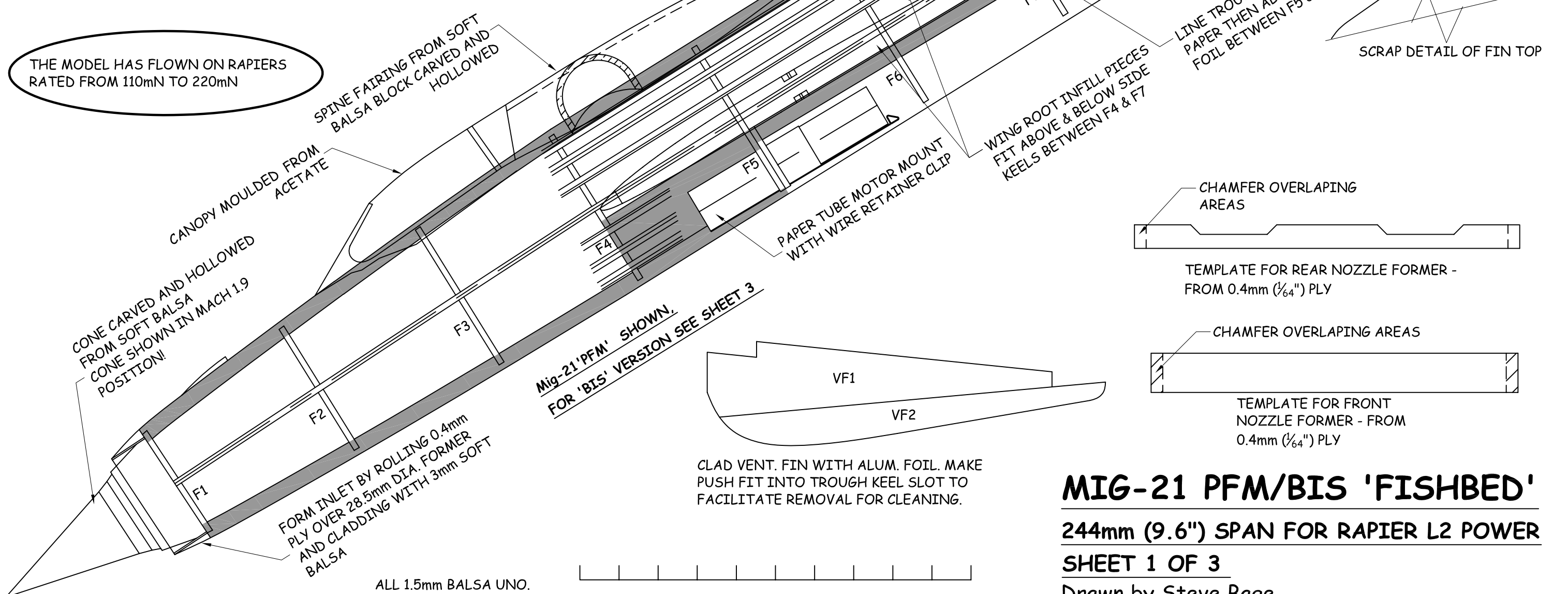
MOST FORMERS ARE BUILT FROM 4 'QUARTER PIECES'. CUT FORMER QUARTER PIECES FROM THE TEMPLATE ON SHEET 3 AND PIN OVER FORMER DETAILS SHOWN ABOVE. GLUE ONLY THE HORIZONTAL JOIN SUCH THAT SEPARATE LEFT AND RIGHT FORMER HALVES ARE CREATED. BEFORE REMOVING FROM PLAN MARK ALL FORMERS WITH STRINGER POSITIONS.

SLOT TO RECEIVE WING SPAR ENDS

LAY UPPER LOWER & TROUGH KEELS OVER SHADED AREAS OF PLAN. AFTER KEELS ARE IN PLACE ADD FIN & VENTRAL FIN DOUBLERS

1.5mm DOUBLERS EACH SIDE OF UPPER & LOWER KEELS TO FORM SLOTS FOR FIN AND VENTRAL FIN

THE MODEL HAS FLOWN ON RAPIERS RATED FROM 110mN TO 220mN



MIG-21 PFM/BIS 'FISHBED'
244mm (9.6") SPAN FOR RAPIER L2 POWER
SHEET 1 OF 3
 Drawn by Steve Bage

0cm 10cm
ALL 1.5mm Balsa UNO

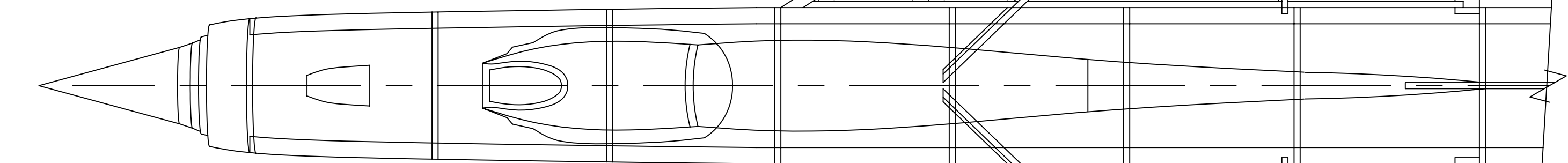
ON PROTOTYPE COVERED WING WAS FITTED TO FUS. BEFORE SHRINKING TISSUE (TO PREVENT 'BOWING' OF R1)

FENCE FROM 0.4mm PLY

BOUNDARY LAYER FENCE



JIG FOR ROOT RIB ANGLE



COUNTER-BALANCE WEIGHTS FROM SCRAP

WEB 0.8mm ON CENTER LINE, GRAIN AS INDICATED (TO PREVENT COMPRESSION OF LE DUE TO TISSUE SHRINKAGE)

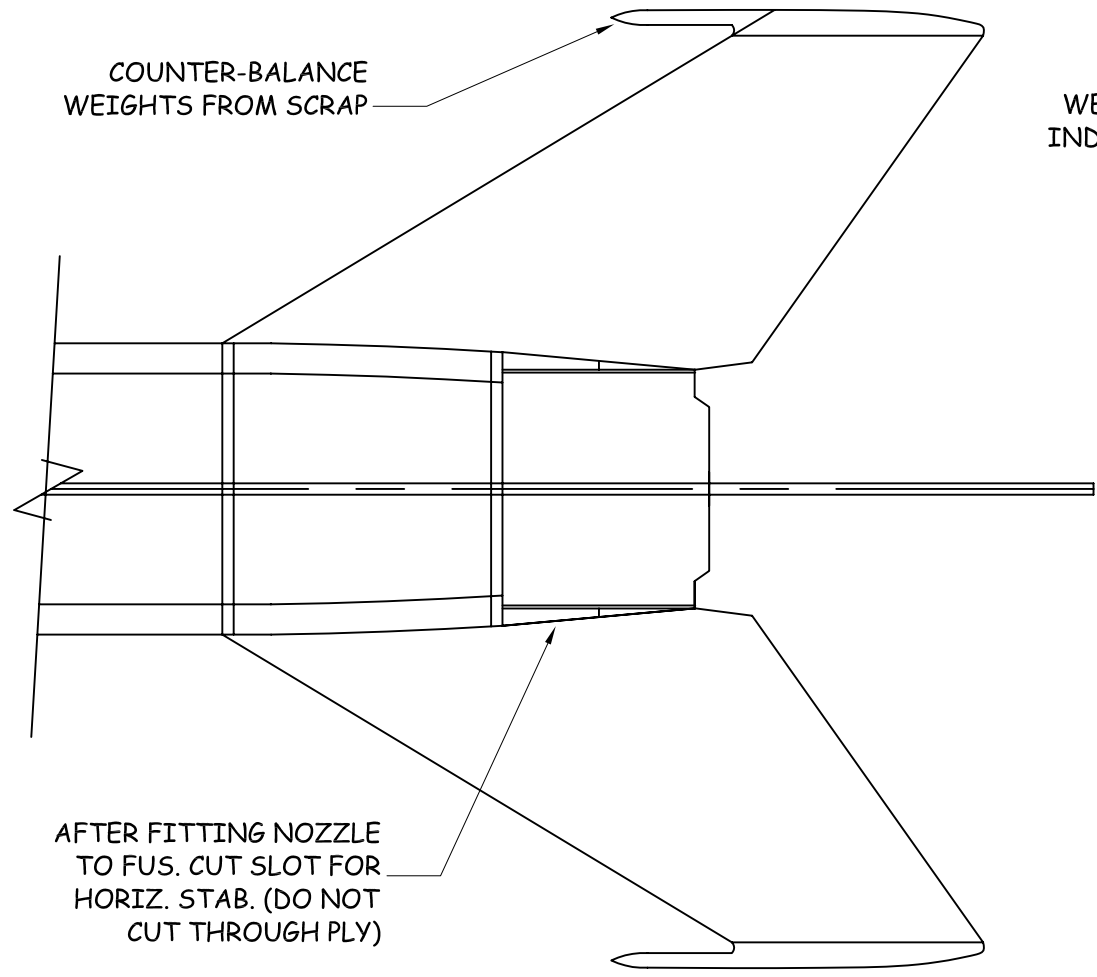
WEB SPARS 0.8mm, GRAIN VERT. OUT TO R3

LE 4mm x 3mm TAPERED TO 1.5mm x 3mm

R3

R2

R1



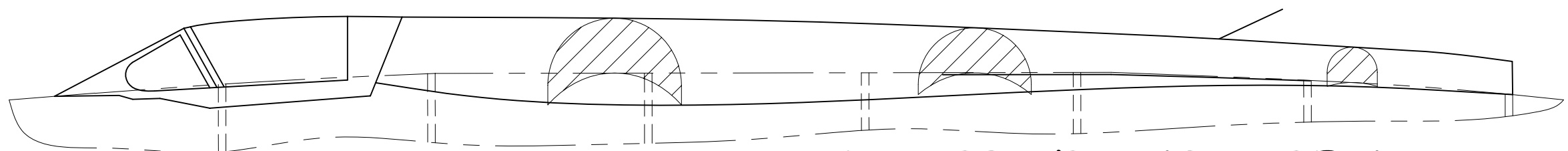
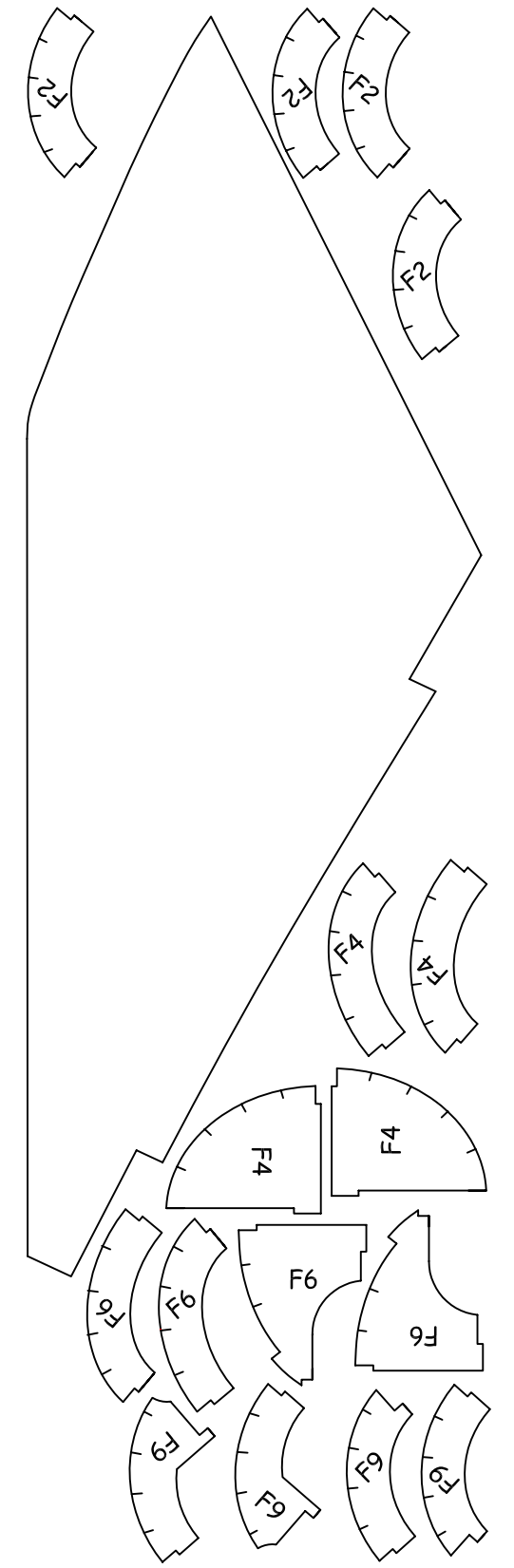
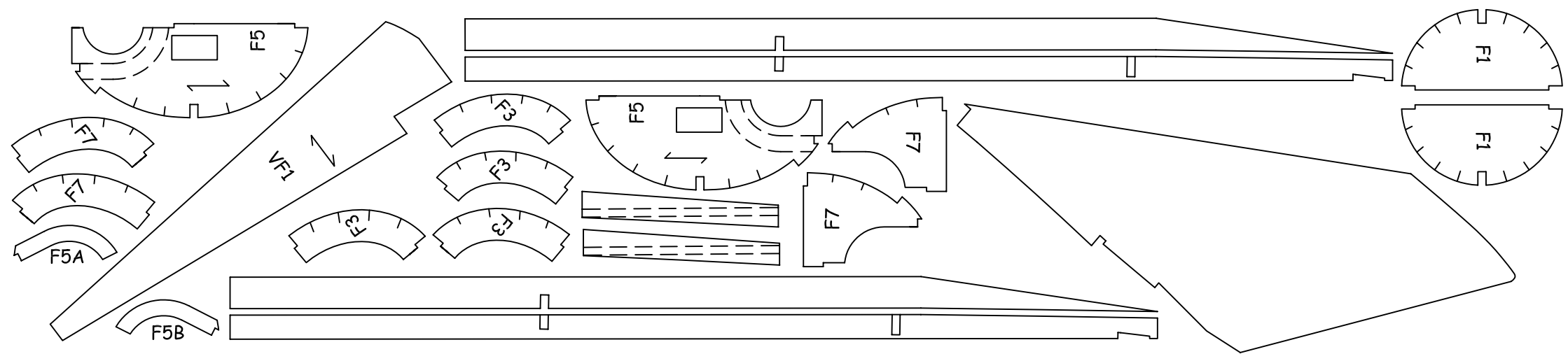
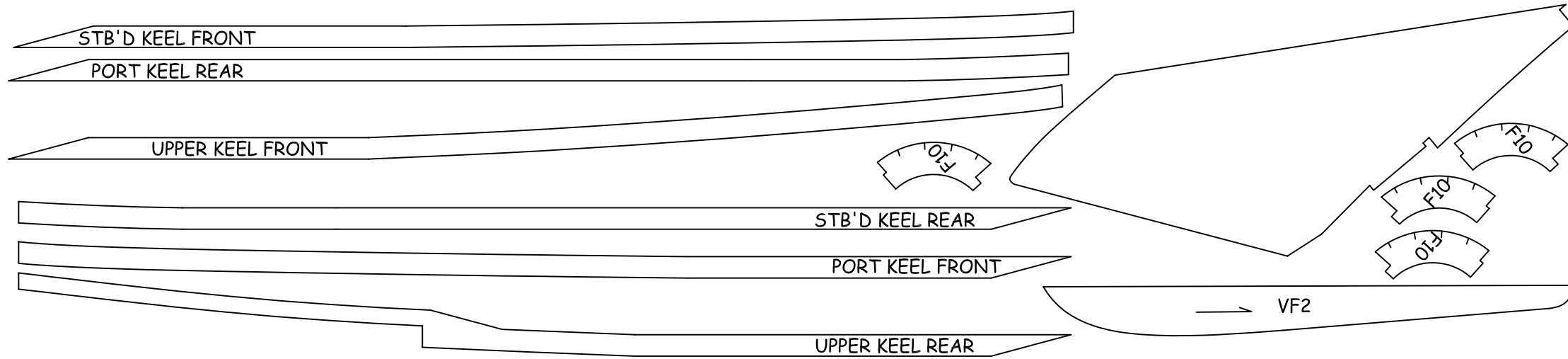
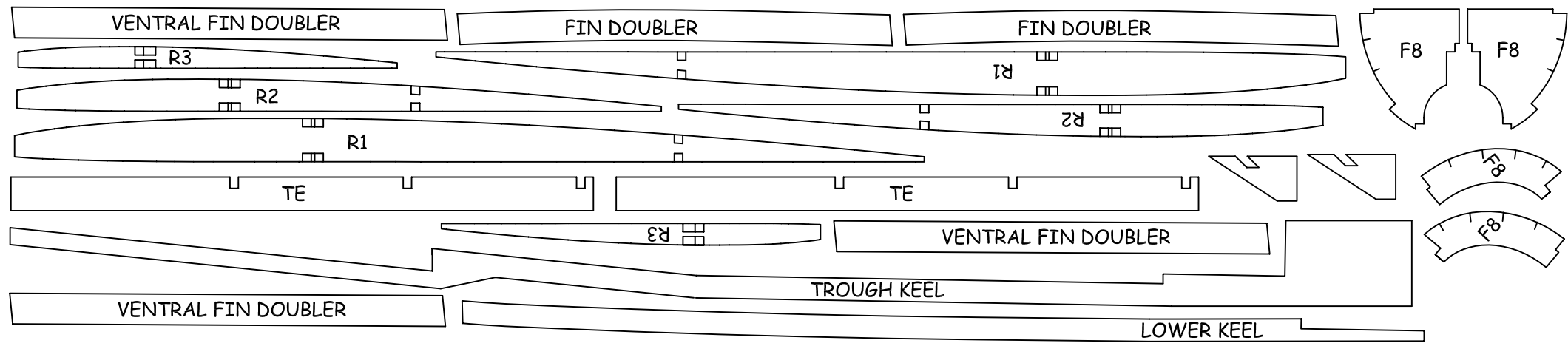
AFTER FITTING NOZZLE TO FUS. CUT SLOT FOR HORIZ. STAB. (DO NOT CUT THROUGH PLY)

MIG-21 PFM/BIS 'FISHBED'

244mm (9.6") SPAN FOR RAPIER L2 POWER

SHEET 2 OF 3

Drawn by Steve Bage



SCRAP VIEW SHOWING 'BIS' VERSION SPINE FAIRING AND CANOPY, ALL OTHER DETAILS AS 'PFM'

MIG-21 PFM/BIS 'FISHBED' 244mm (9.6") SPAN FOR RAPIER L2 POWER