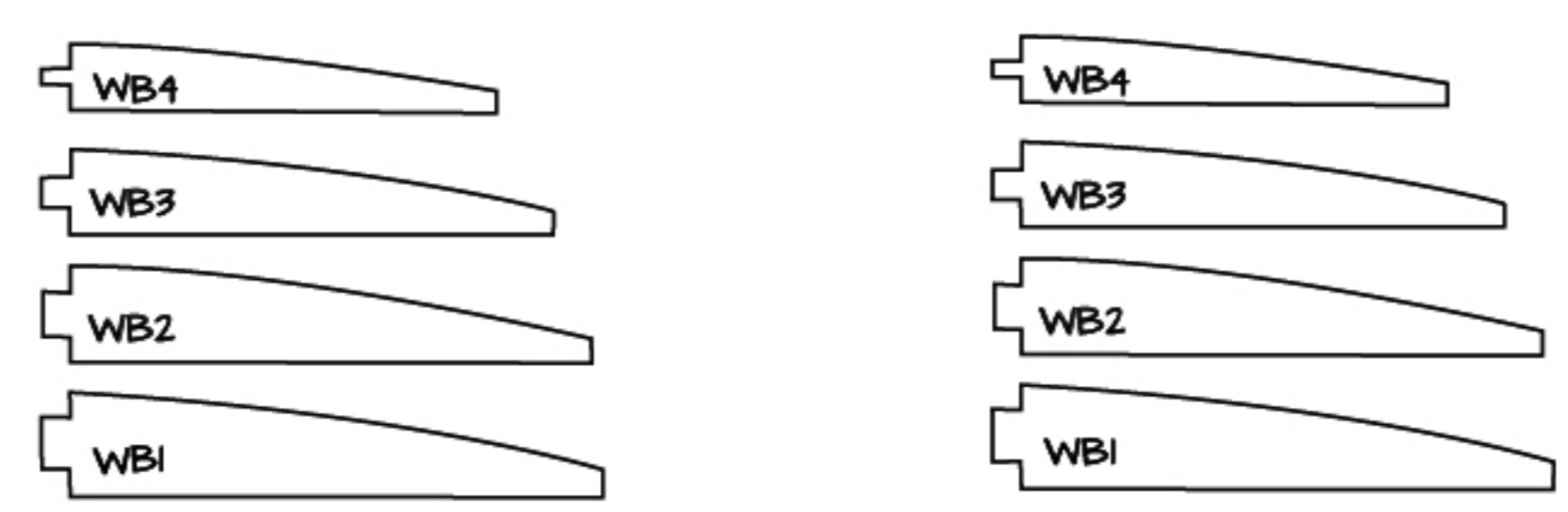
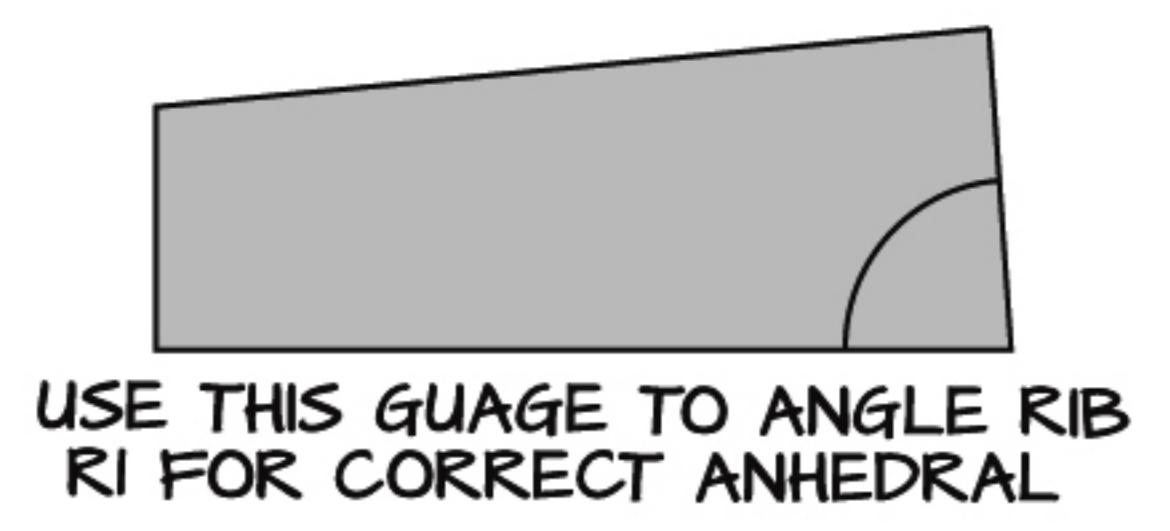
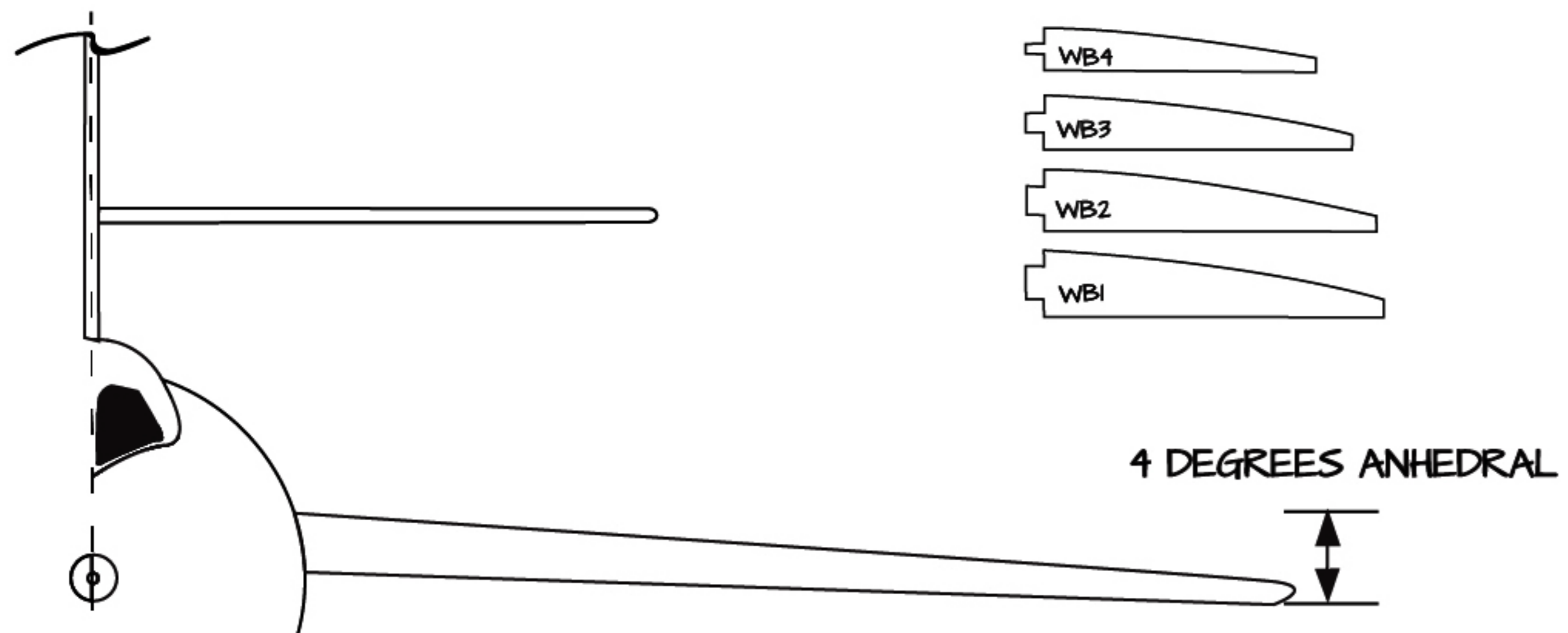
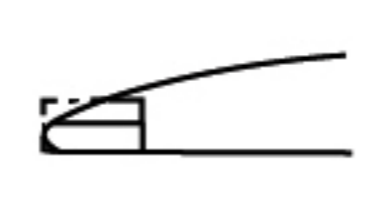


DOUGLAS D.558-2 SKYROCKET
 10 1/4" SPAN FREE FLIGHT MODEL FOR RAPIER MOTOR
 DESIGNED BY RICHARD CROSSLEY
 PLAN DRAWN BY DAVID NITRO



ADD SOFT 1/16" SHEET TO TOP OF I.E. BETWEEN RIBS AND SAND TO PROFILE SHOWN

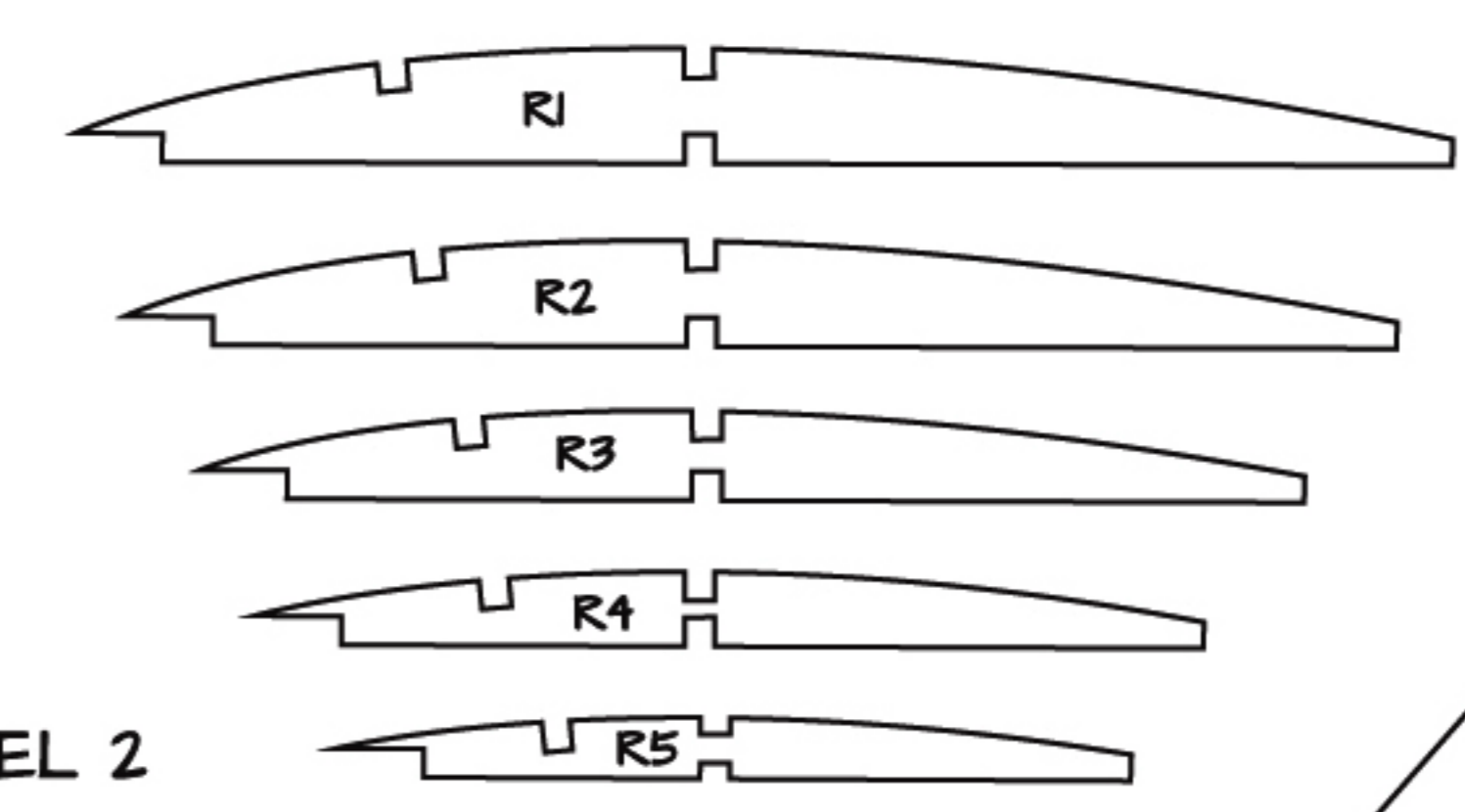


'WEB' ALL STATIONS WITH 1/16" SHEET

WING BRACING

SOFT BLOCK

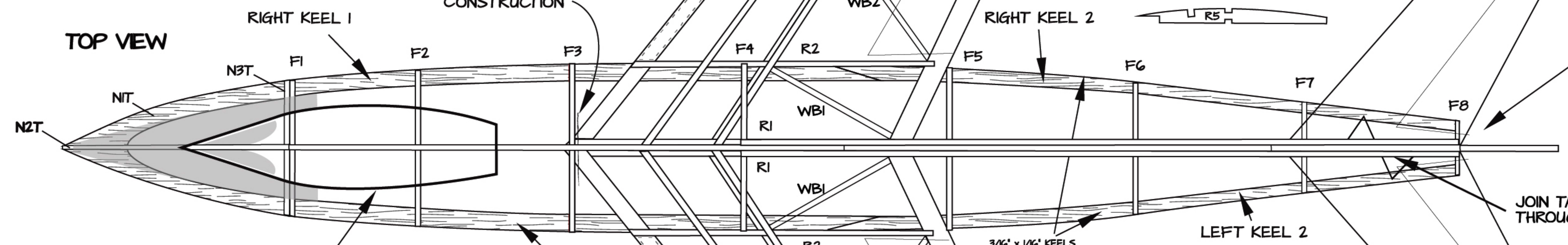
NOTCH 1/16" SPARS SLIGHTLY TO ENGAGE RIB NOTCHES AT TIP



CUT TIP OFF AFTER CONSTRUCTION

RIGHT KEEL 2

TOP VIEW



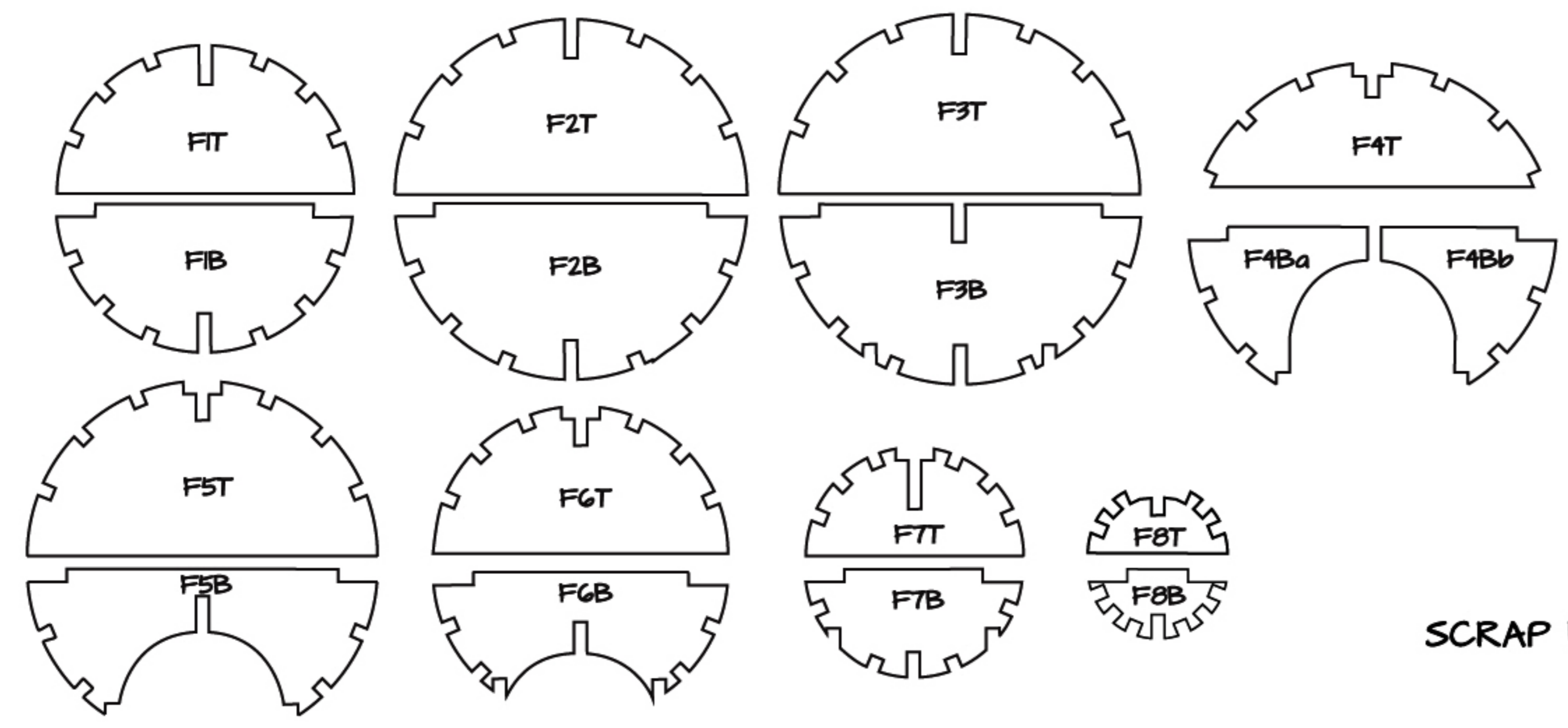
JOIN TAILPLANE THROUGH FIN

ADD INFILLING AROUND BASE OF CANOPY

LEFT KEEL 1

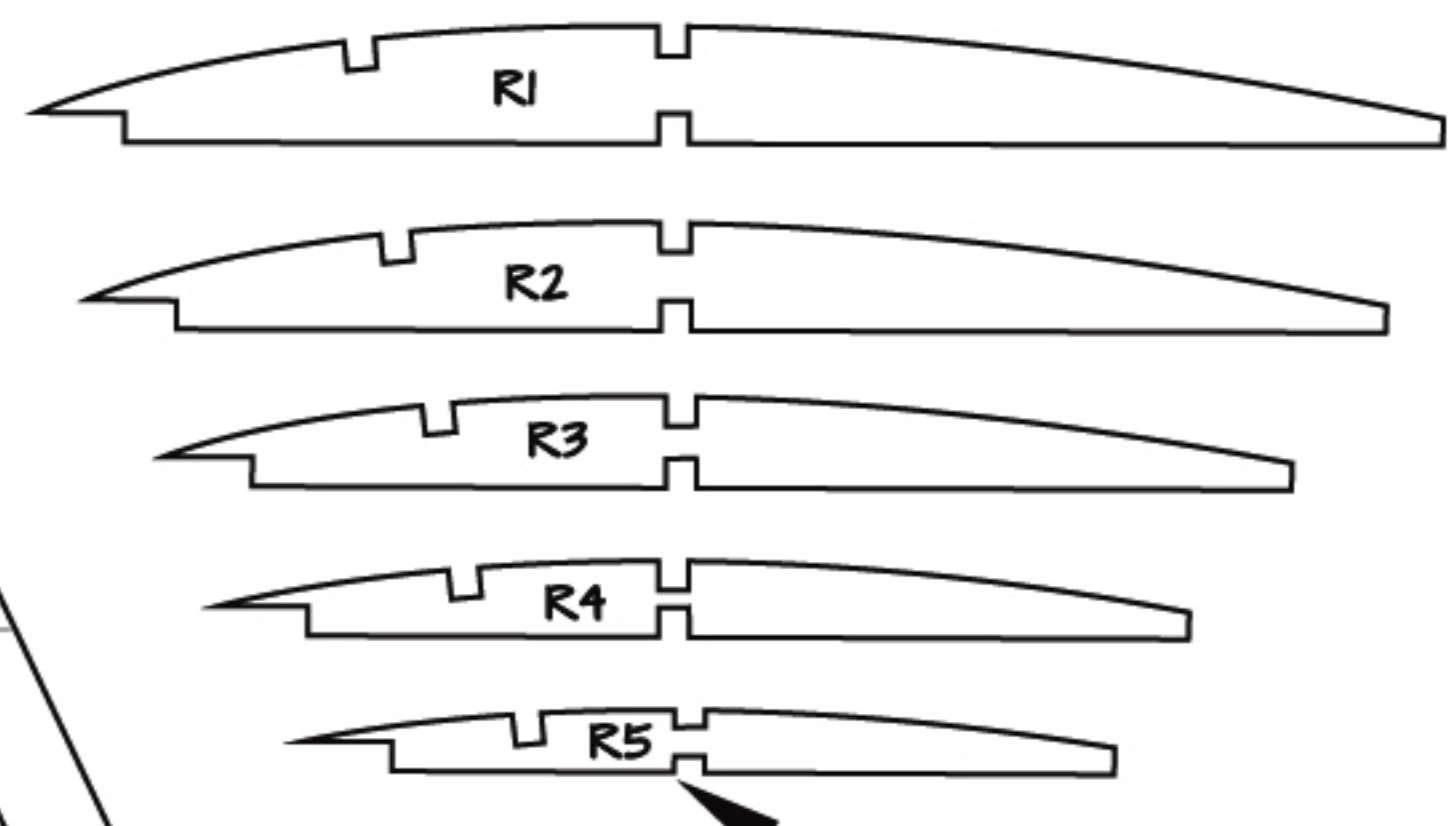
3/16" x 1/16" KEELS

LEFT KEEL 2



1/16" x 1/4" LE

1/16" SQ SPARS



RIB TOO SHALLOW FOR FULL DEPTH NOTCHES

1/16" TE

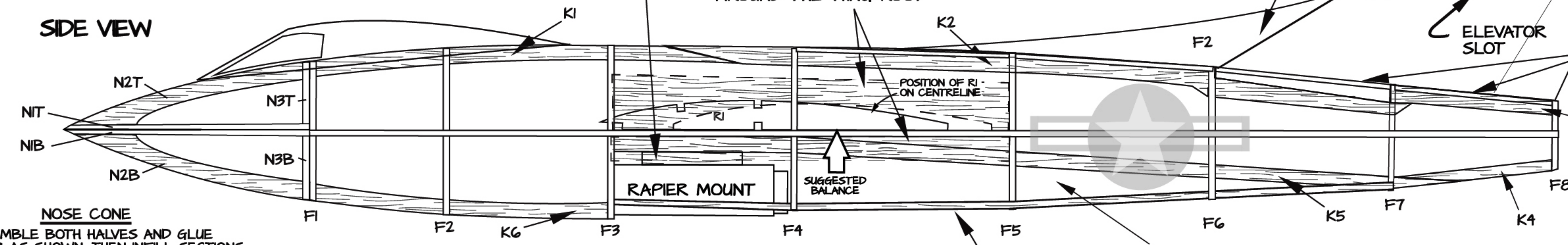
1/16" Balsa

SCRAP Balsa BLOCK

1/16" SHEET Balsa FILLER BETWEEN STRINGERS AROUND THE WING ROOT

1/16" Balsa

SIDE VIEW



ADD 1/16" Balsa STRINGERS BOTH SIDES OF FIN TO ANCHOR TISSUE

ELEVATOR SLOT

RAPIER MOUNT

SUGGESTED BALANCE

THE MOTOR TROUGH IS LINED WITH SELF-ADHESIVE ALUMINIUM TAPE.

1/8" x 1/16" STRINGER

ALTERNATIVE HOLLOWED OUT SOFT Balsa BLOCK NOSE

NOSE CONE

ASSEMBLE BOTH HALVES AND GLUE TOGETHER AS SHOWN. THEN INFILL SECTIONS WITH Balsa BLOCK. SAND TO SHAPE AND HOLLOW OUT TO REDUCE WEIGHT

