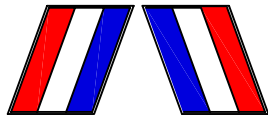
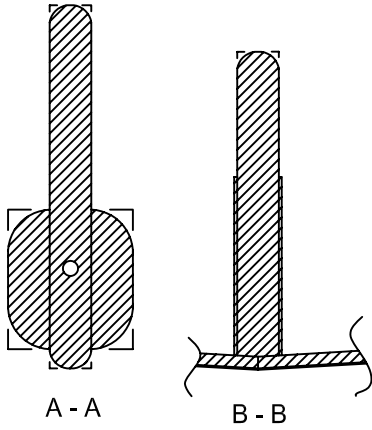
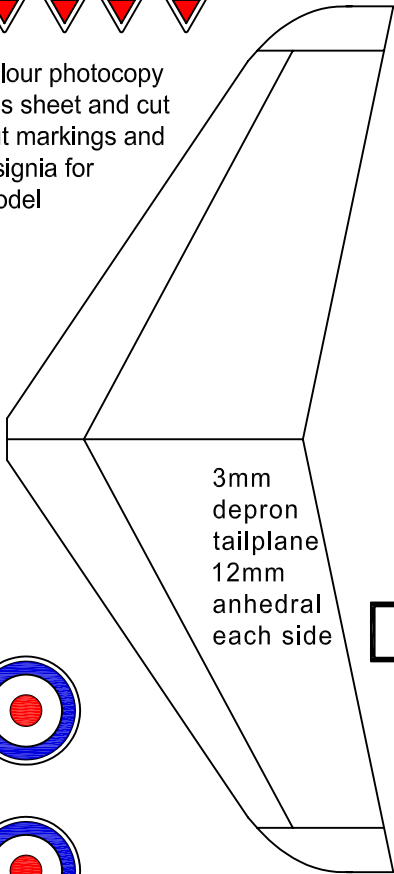


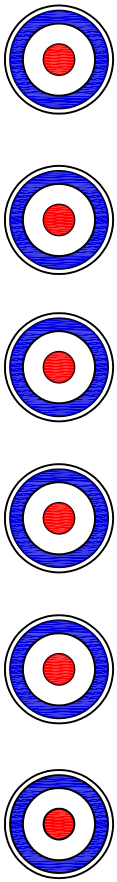
typical profiles for 3mm depron wing tailplane and fin

314 314  
XX314 XX314

colour photocopy  
this sheet and cut  
out markings and  
insignia for  
model

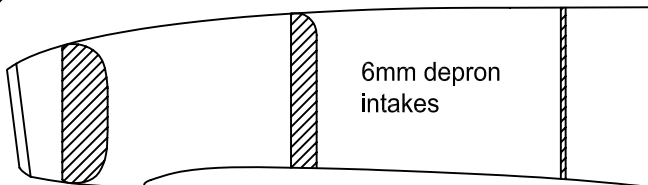
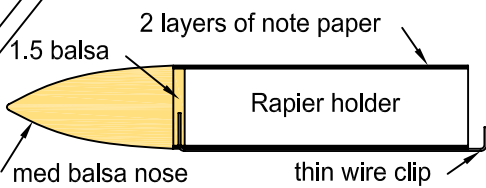


RAF Valley Hawk



.5mm ply downthrust  
tab 6mm x 30mm  
alu. foil

2mm cane  
or carbon rod  
stiffener



6mm depron fuselage

toothpicks

3mm balsa pylon

1.5 soft balsa  
heat shield

alu. foil exhaust shield

scale 1:1 - all materials Depron foam unless otherwise noted  
weight 9g with empty motor, colour all black with permanent markers

3mm depron  
wings  
9mm dihedral  
each side

33

Rapier pylon  
position

alu. foil lining

downthrust tab  
leave bottom edge  
flat behind wing  
for shield