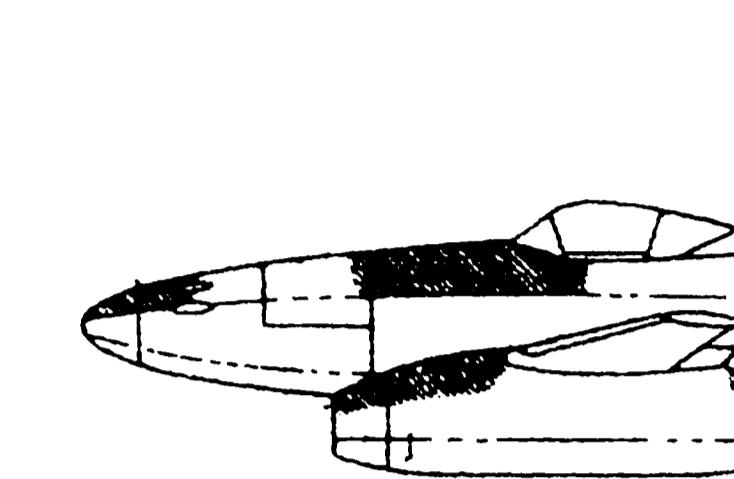


FULL SIZE MARKINGS

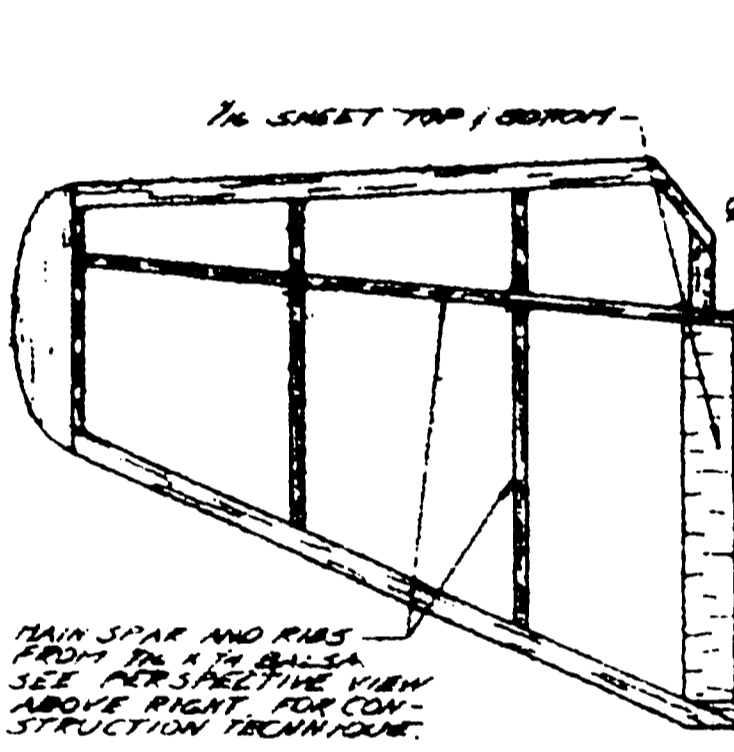
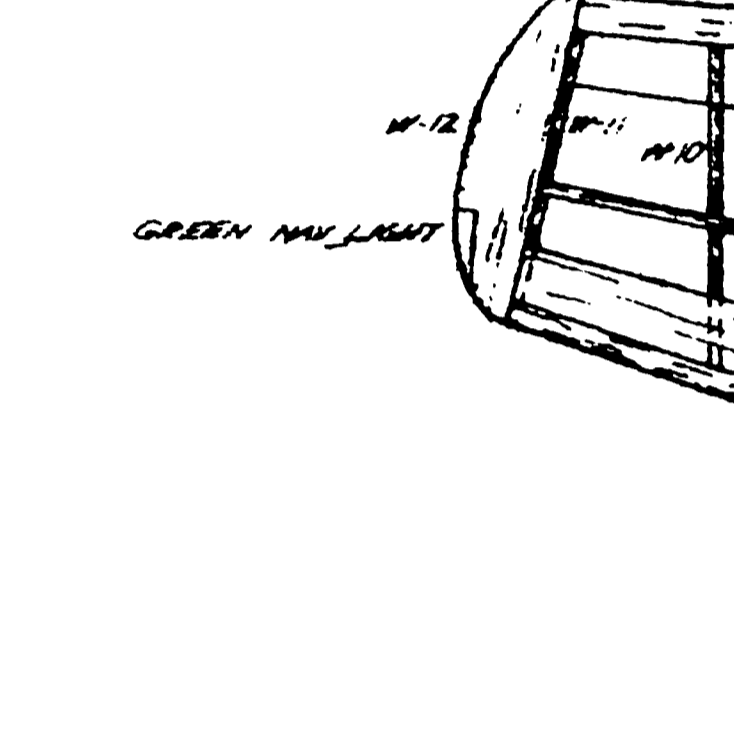
COLOR SCHEME
FIND A GOOD PHOTO OF A RESTORED
ME 262 WITH THE 76 OR 80 ON THE SIDE AND
REPRODUCE THE SIDE MARKINGS TO YOUR
PREFERENCE. IS A GOOD COLOR REFERENCE.

COLORS:
BROWN 70 10
DARK GREEN 70 10
DARK BLUE 70 10
DARK RED 70 10
DARK GREY 70 10
DARK BLUE 70 10
DARK GREY 70 10
DARK BLUE 70 10
DARK GREY 70 10
DARK BLUE 70 10
DARK GREY 70 10

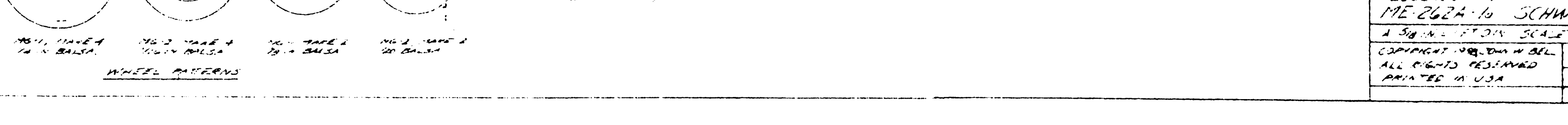
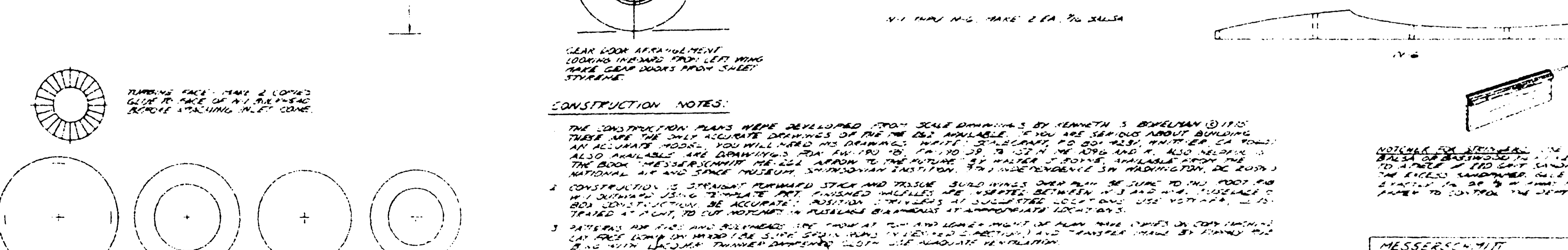
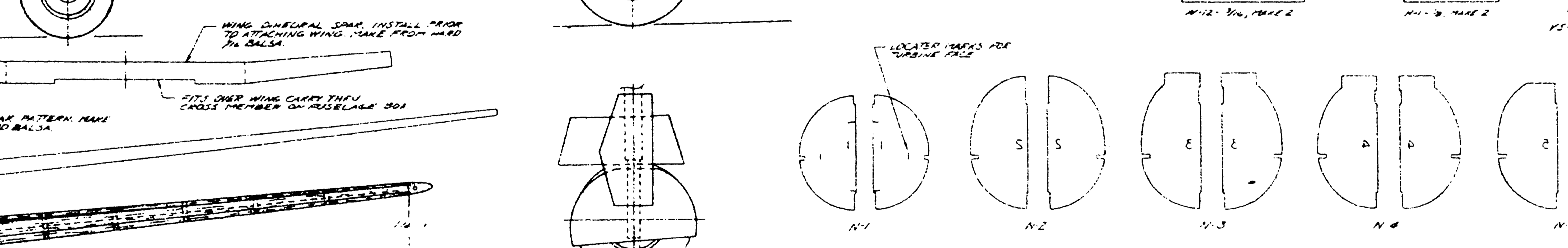
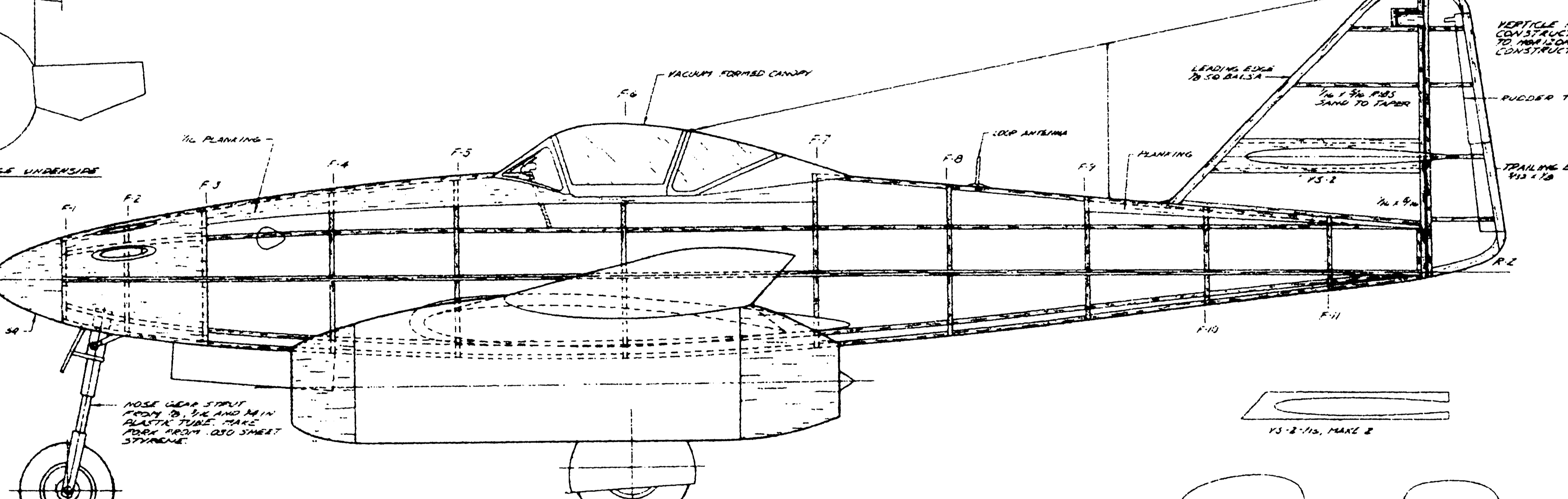
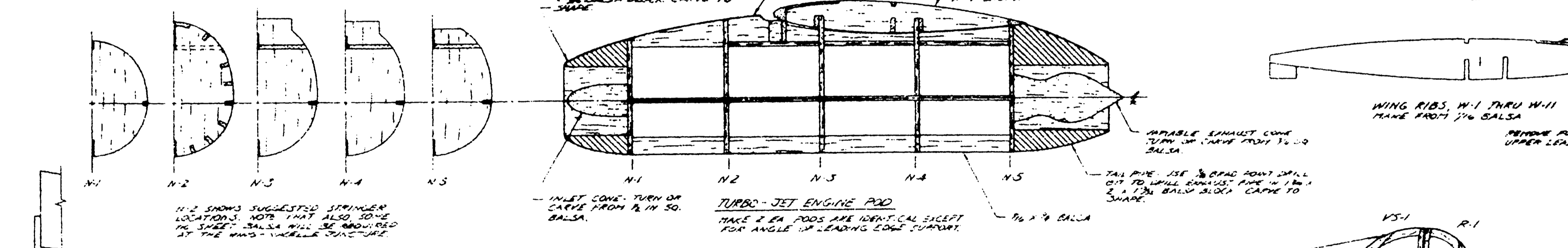
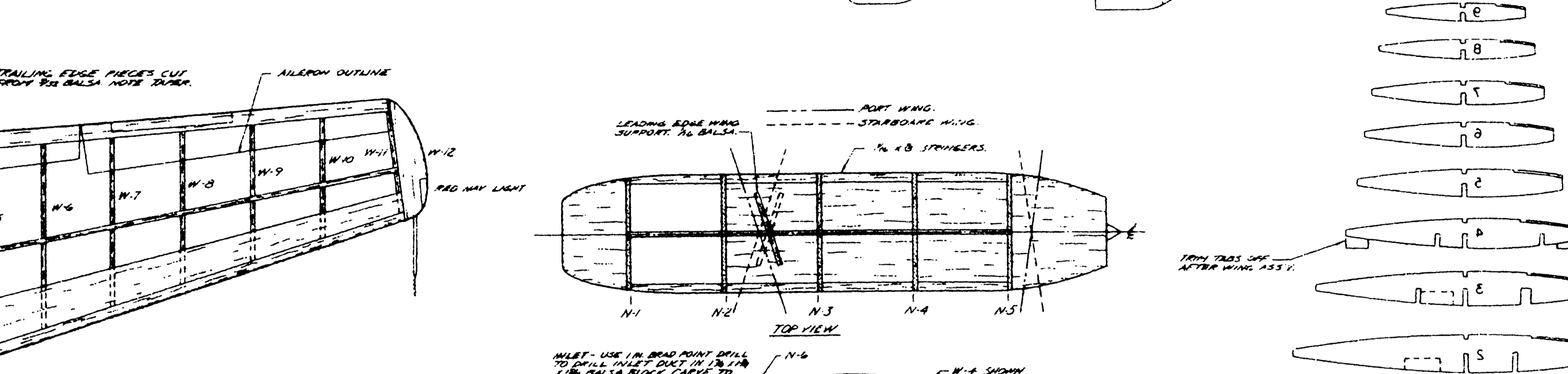
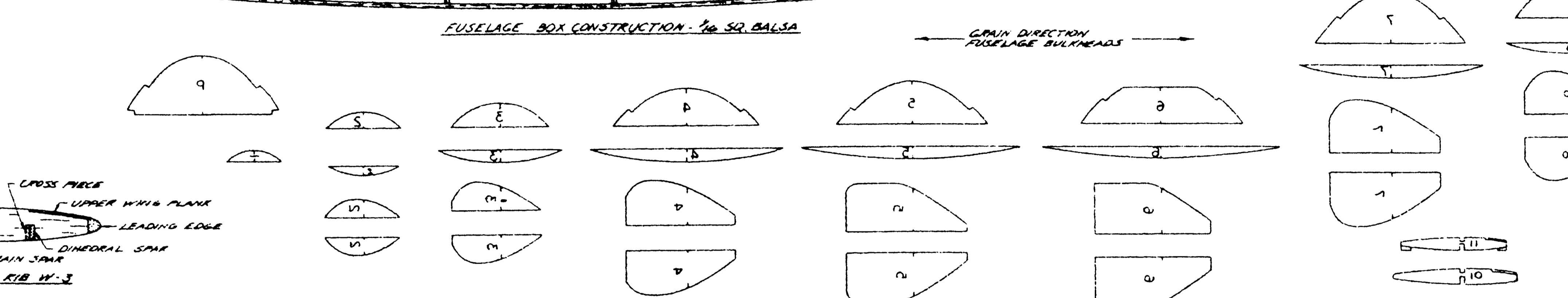
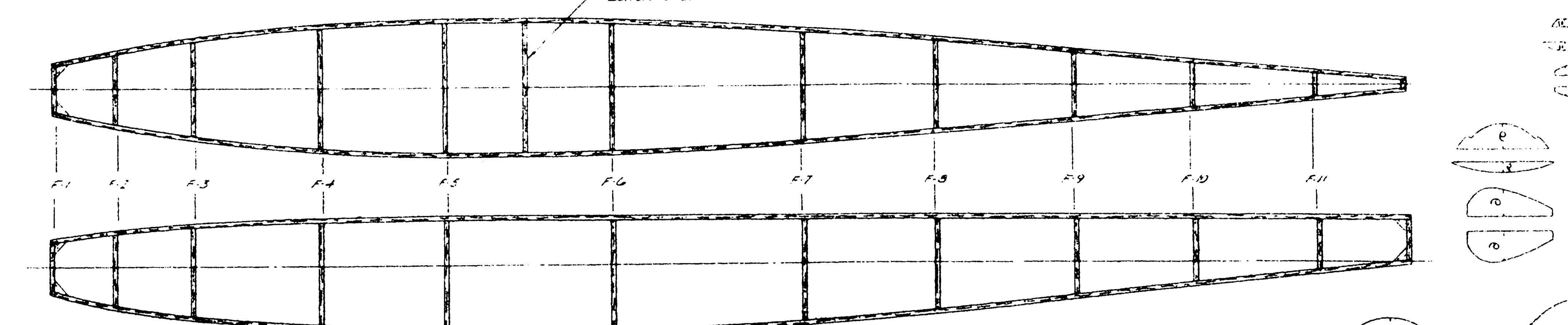
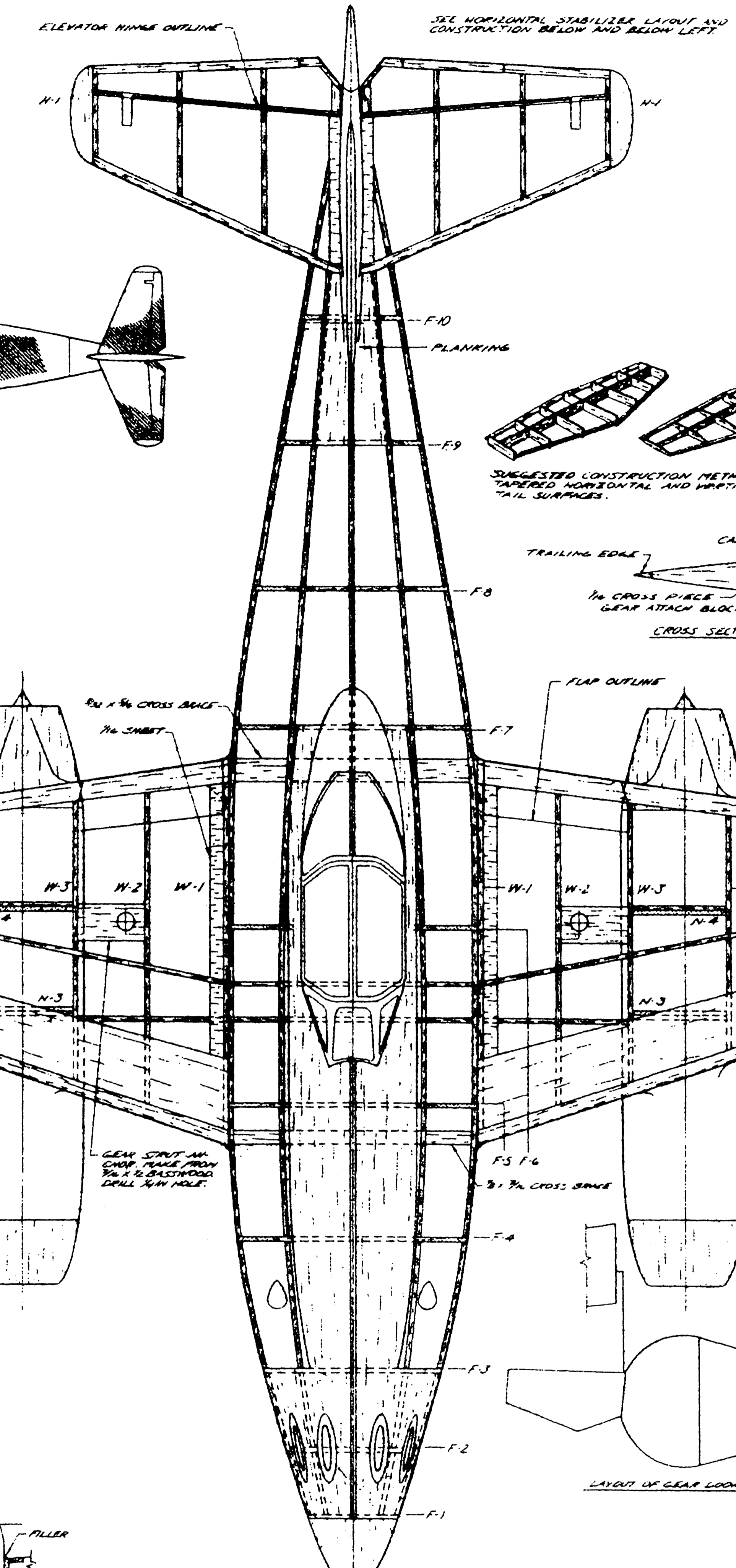
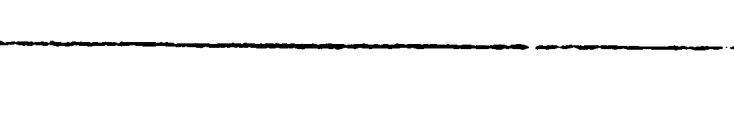
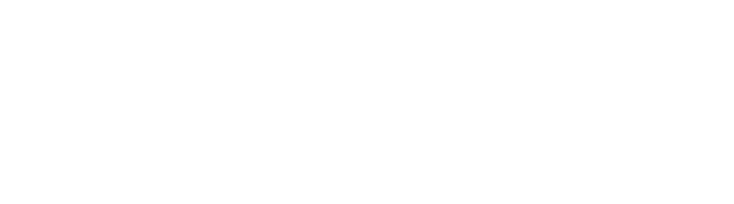
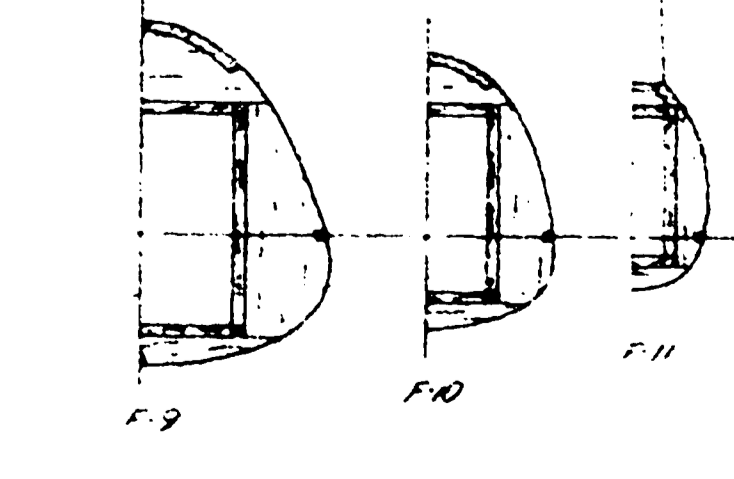
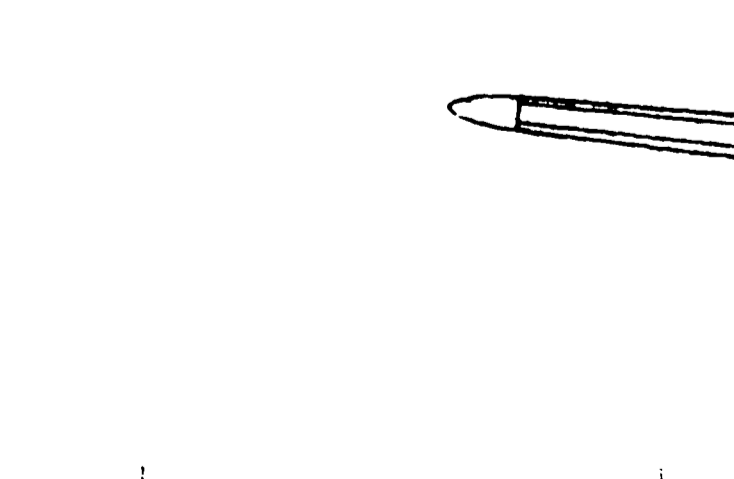
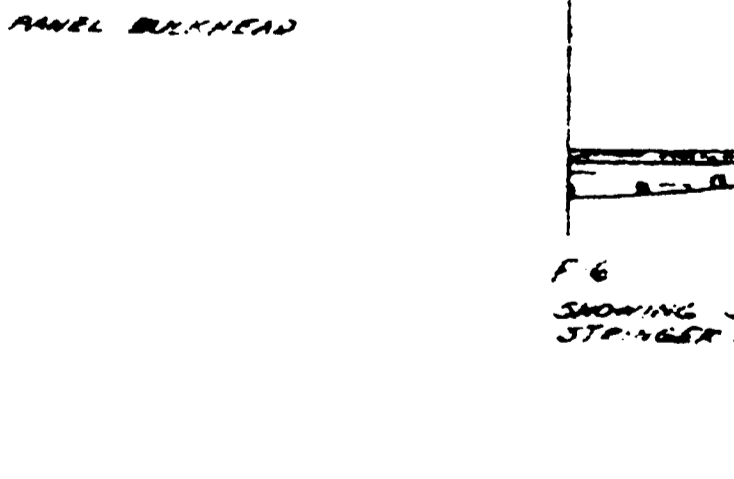
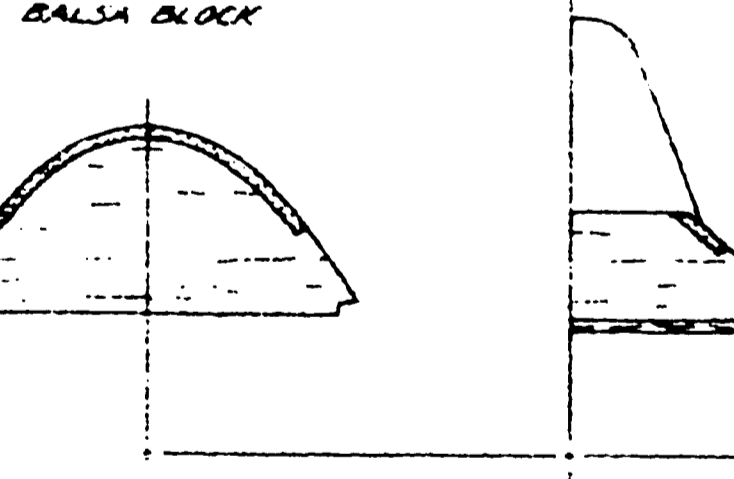
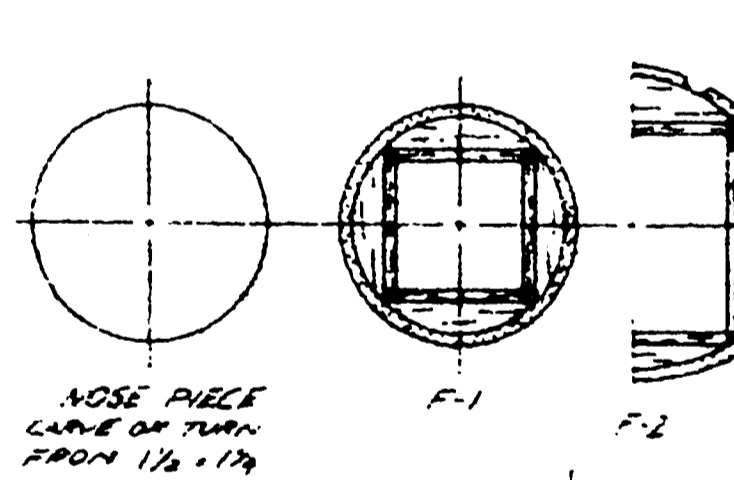
THE BLANKING OF THE TOP SIDE CAN
BE MADE TO THE LINE THROUGH THE
CROSS MEMBER WITH THE
PHOTO ON HAND THIS IS DONE



GREEN PAINT LIGHT



HORIZONTAL STABILIZER



NOTE: MAIN WHEEL BEARING IS 3/8" DIA. MAIN WHEEL NUTS ARE 3/8" DIA. MAIN WHEEL NUTS ARE 3/8" DIA.

FRONT VIEW

CONSTRUCTION NOTES:
1. THE CONSTRUCTION PLANS WERE DEVELOPED FROM SCALE DRAWINGS BY KENNETH S. BOWEN (1715).
2. THERE ARE NO SCALE DRAWINGS OF THE ME 262. THE ME 262 WAS BUILT IN 1945 AND
3. ALL DIMENSIONS ARE IN INCHES UNLESS OTHERWISE SPECIFIED.
4. ALL DIMENSIONS ARE IN INCHES UNLESS OTHERWISE SPECIFIED.
5. ALL DIMENSIONS ARE IN INCHES UNLESS OTHERWISE SPECIFIED.

MESSERSCHMITZ
ME 262-1A
SCHWARZ 2512
COPYRIGHT 1988 BY SCHWARZ ENGINEERING
ALL RIGHTS RESERVED
PRINTED IN USA