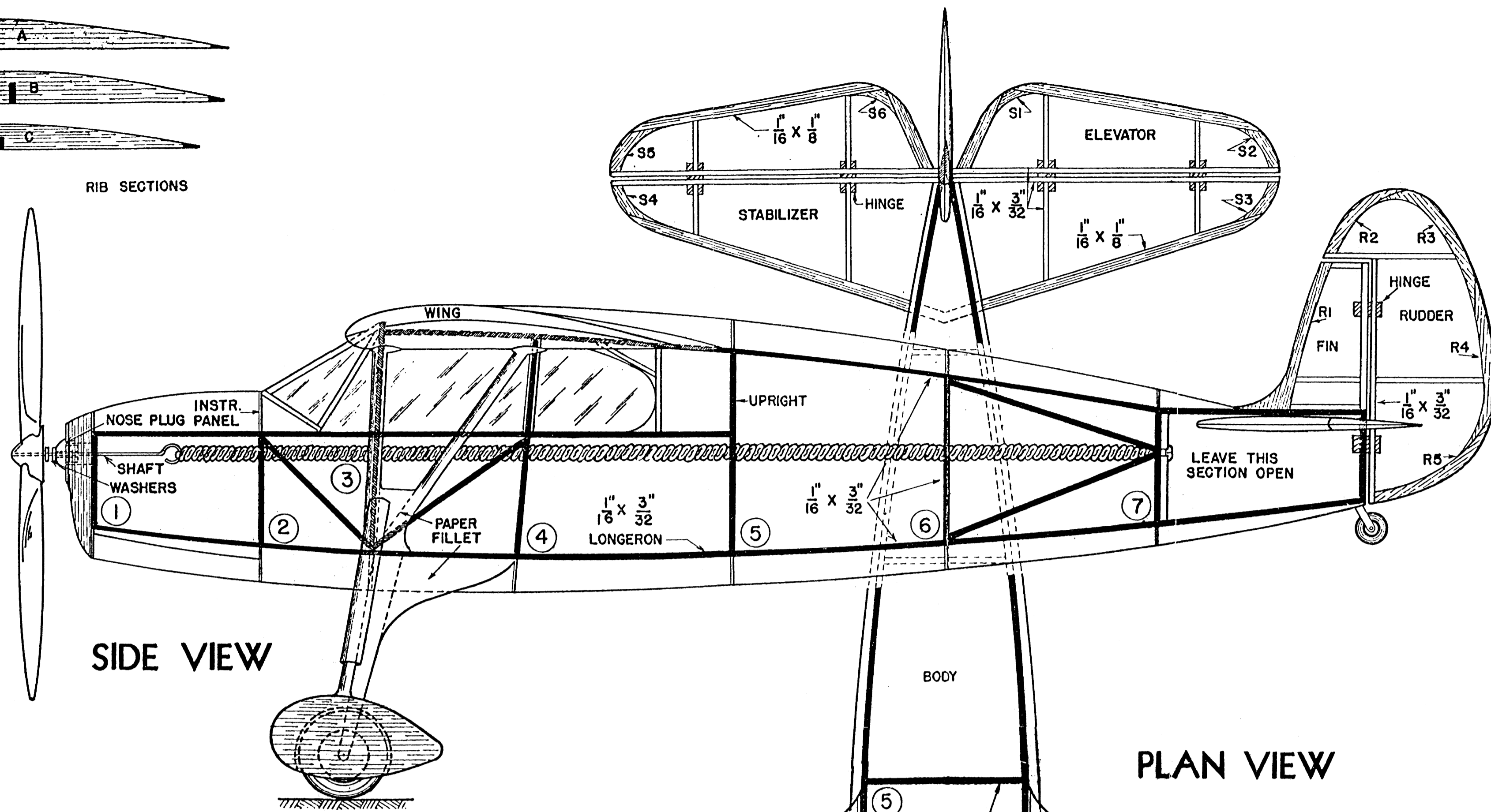
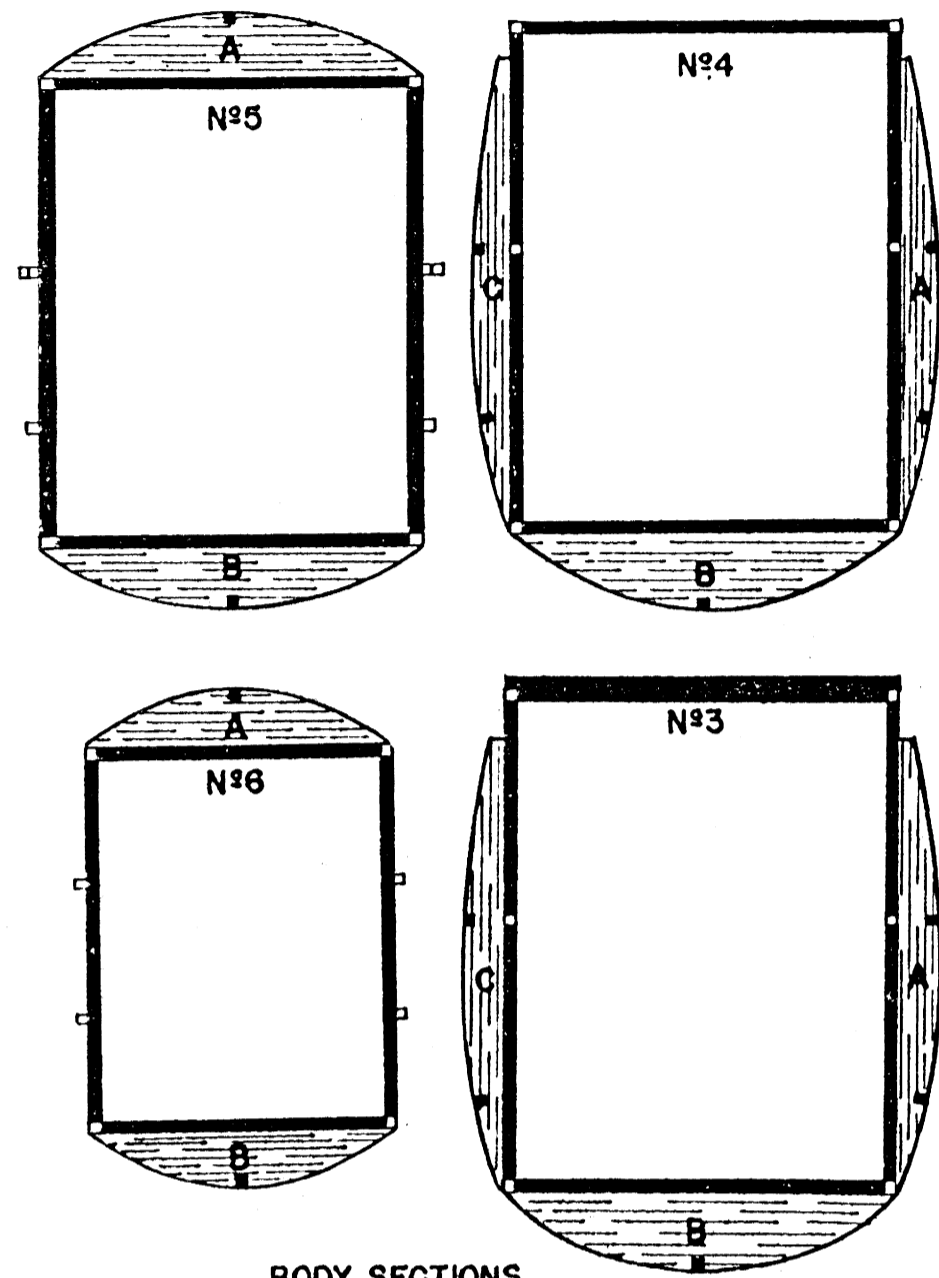


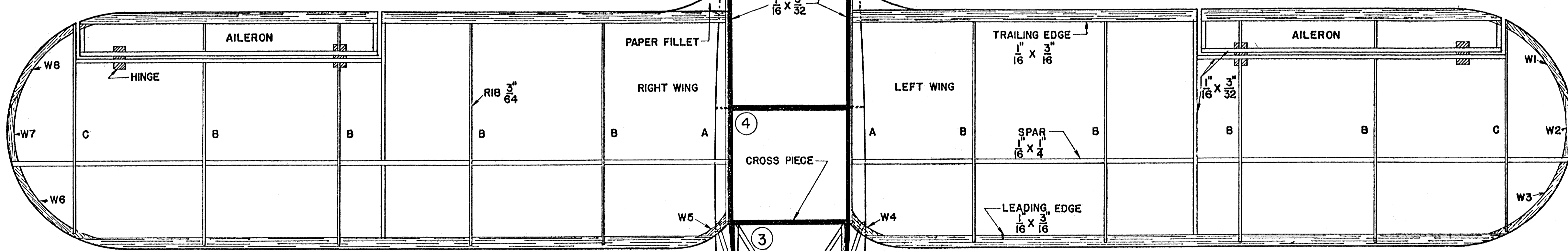
RIB SECTIONS



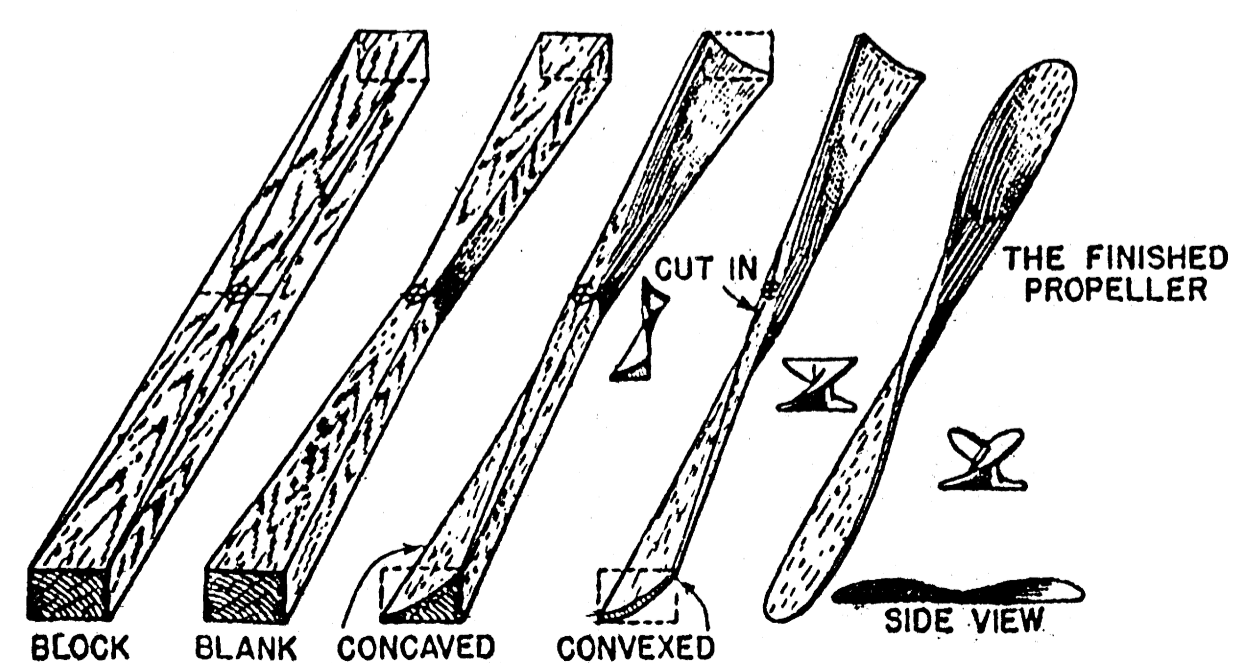
SIDE VIEW



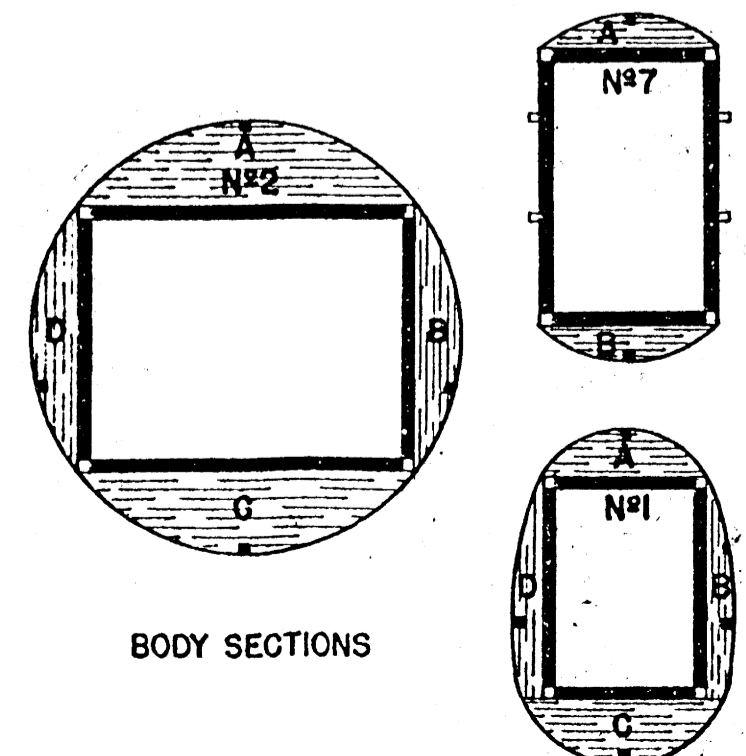
BODY SECTIONS



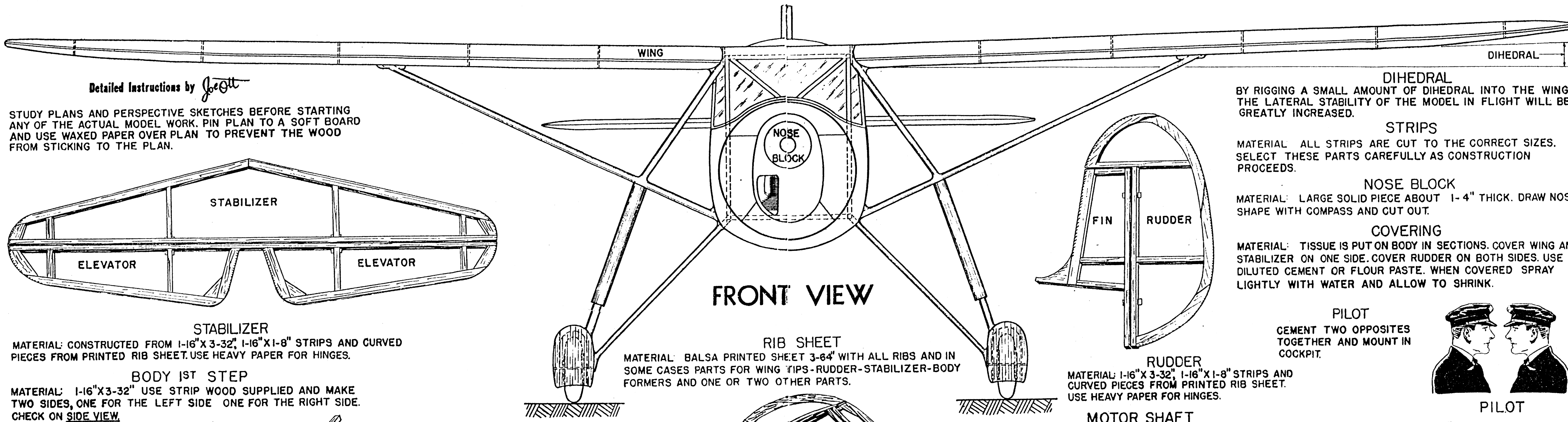
PLAN VIEW



PROPELLER CARVING PROCEDURE

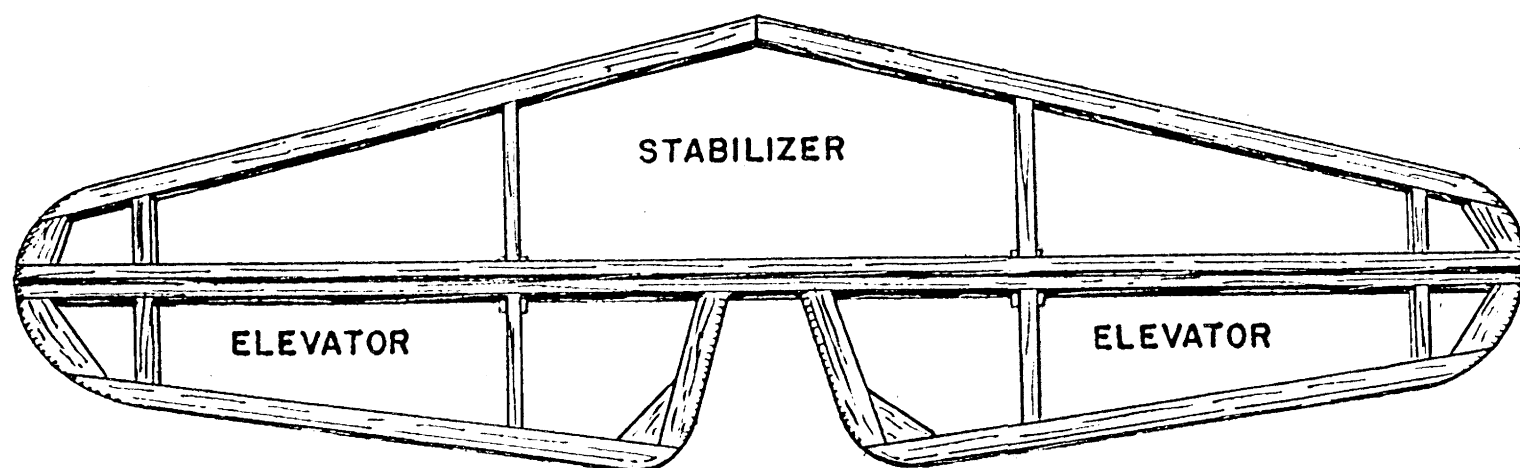


BODY SECTIONS



Detailed Instructions by *Joe Ott*

STUDY PLANS AND PERSPECTIVE SKETCHES BEFORE STARTING ANY OF THE ACTUAL MODEL WORK. PIN PLAN TO A SOFT BOARD AND USE WAXED PAPER OVER PLAN TO PREVENT THE WOOD FROM STICKING TO THE PLAN.

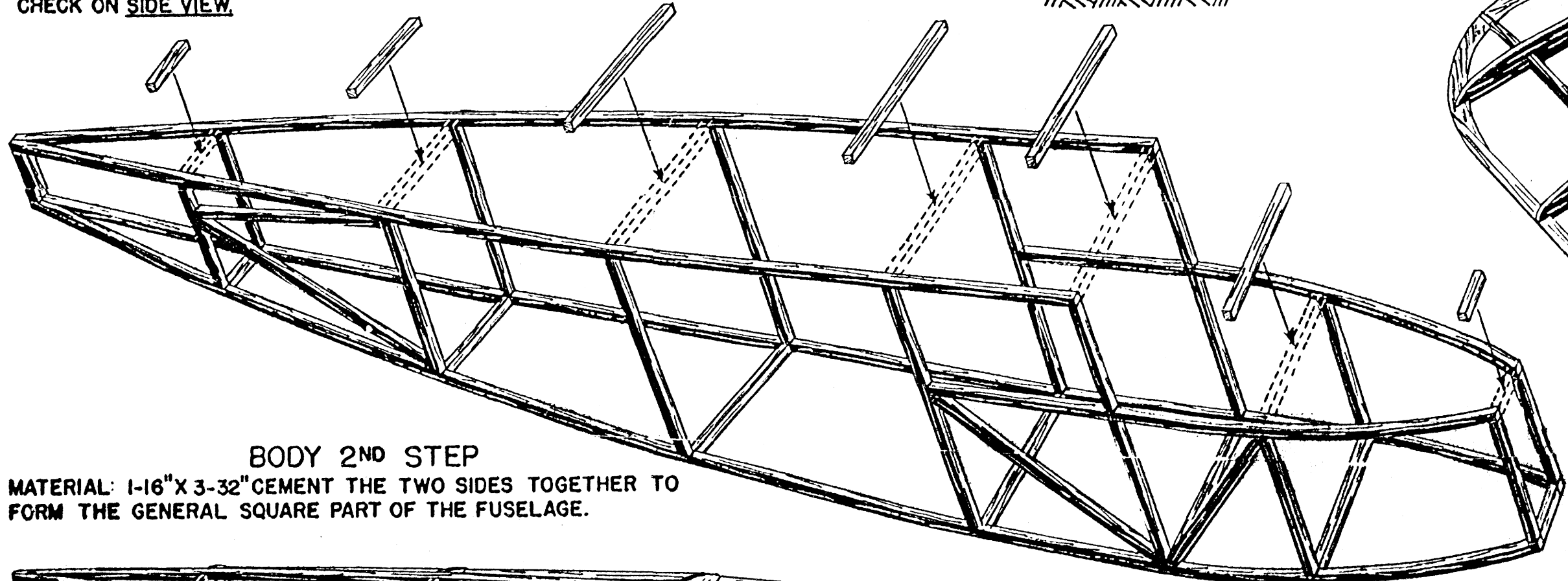


**STABILIZER**

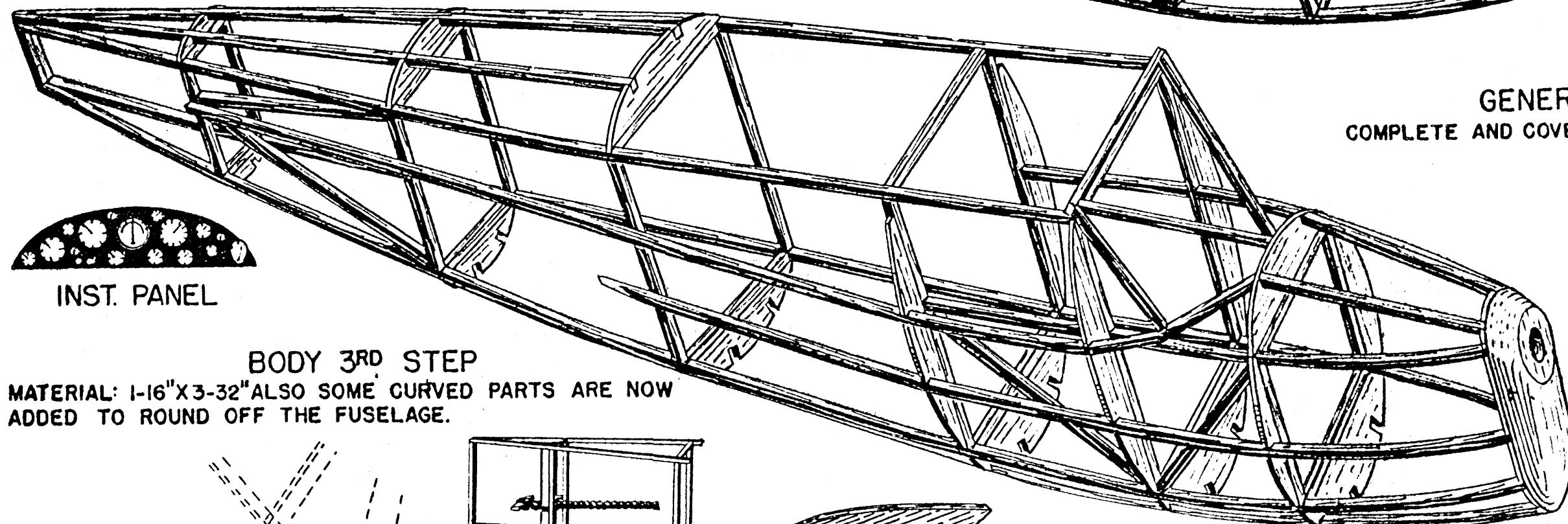
MATERIAL: CONSTRUCTED FROM 1-16" X 3-32", 1-16" X 1-8" STRIPS AND CURVED PIECES FROM PRINTED RIB SHEET. USE HEAVY PAPER FOR HINGES.

**BODY 1ST STEP**

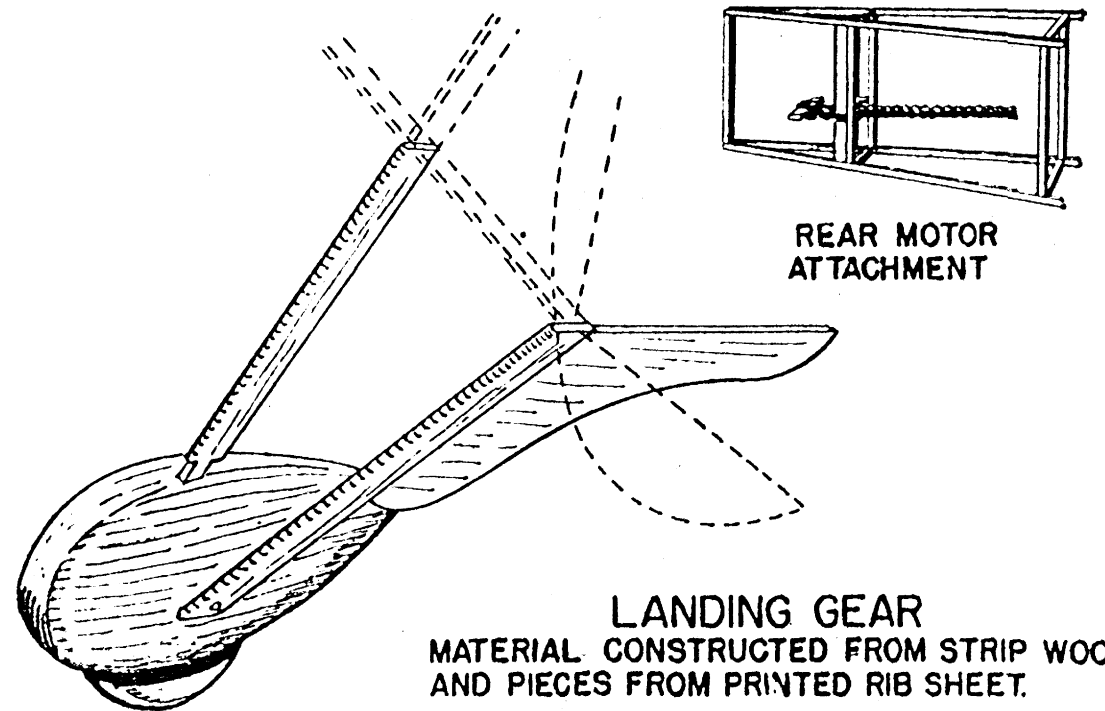
MATERIAL: 1-16" X 3-32" USE STRIP WOOD SUPPLIED AND MAKE TWO SIDES, ONE FOR THE LEFT SIDE ONE FOR THE RIGHT SIDE. CHECK ON SIDE VIEW.



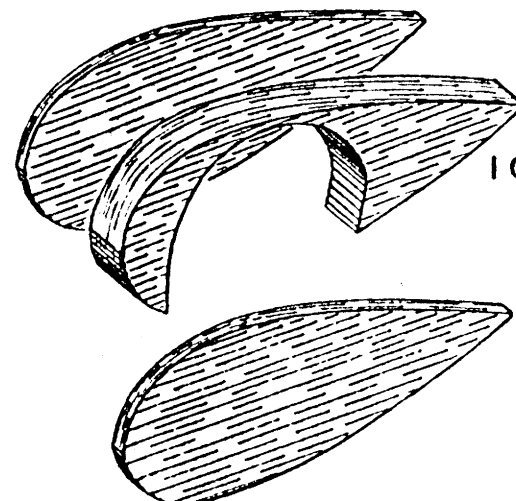
MATERIAL: 1-16" X 3-32" CEMENT THE TWO SIDES TOGETHER TO FORM THE GENERAL SQUARE PART OF THE FUSELAGE.



MATERIAL: 1-16" X 3-32" ALSO SOME CURVED PARTS ARE NOW ADDED TO ROUND OFF THE FUSELAGE.



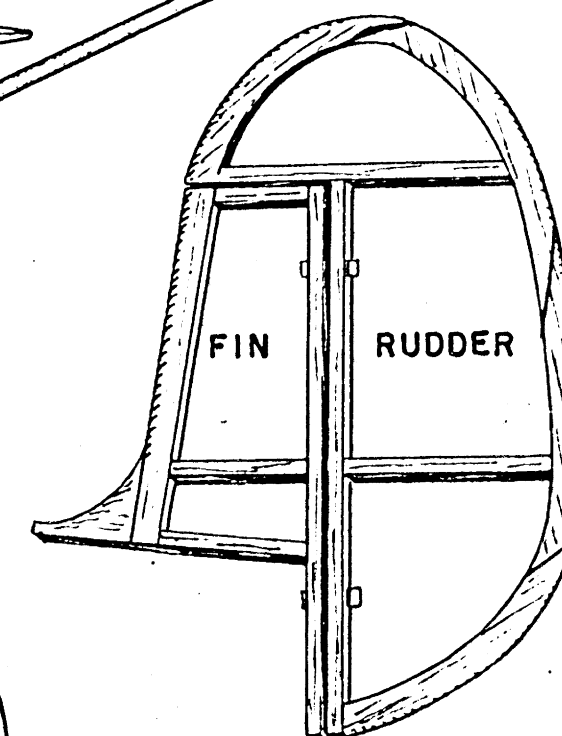
REAR MOTOR ATTACHMENT



1 CORE REQUIRED

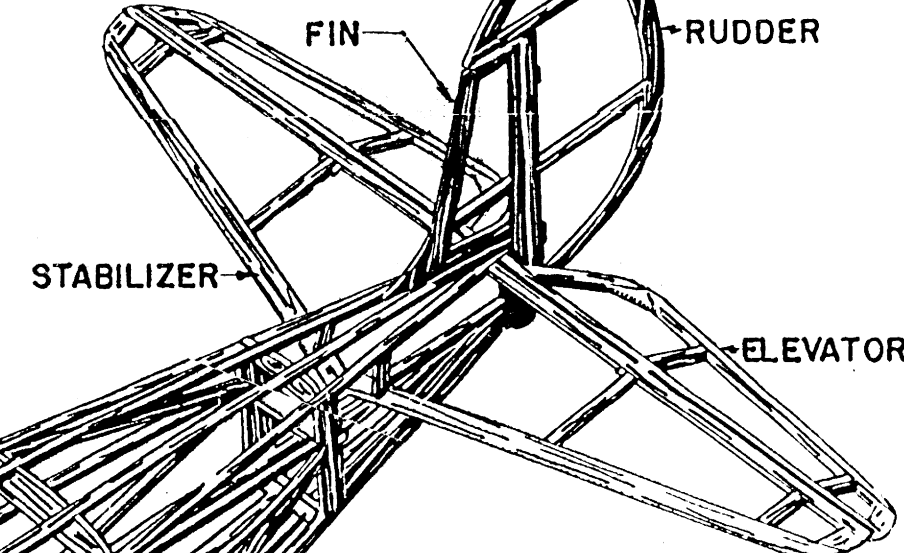
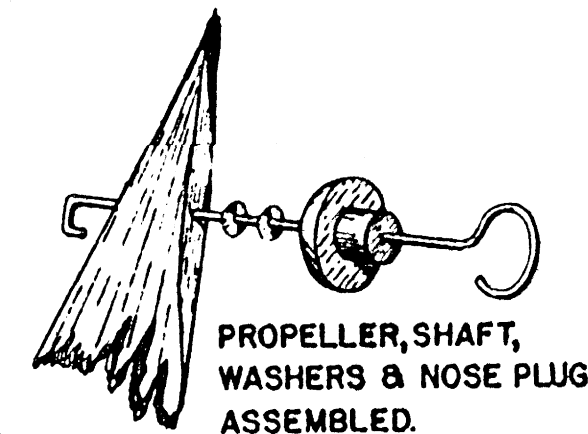
2 COVERS REQUIRED

**RIB SHEET**  
MATERIAL: Balsa PRINTED SHEET 3-64" WITH ALL RIBS AND IN SOME CASES PARTS FOR WING TIPS-RUDDER-STABILIZER-BODY FORMERS AND ONE OR TWO OTHER PARTS.

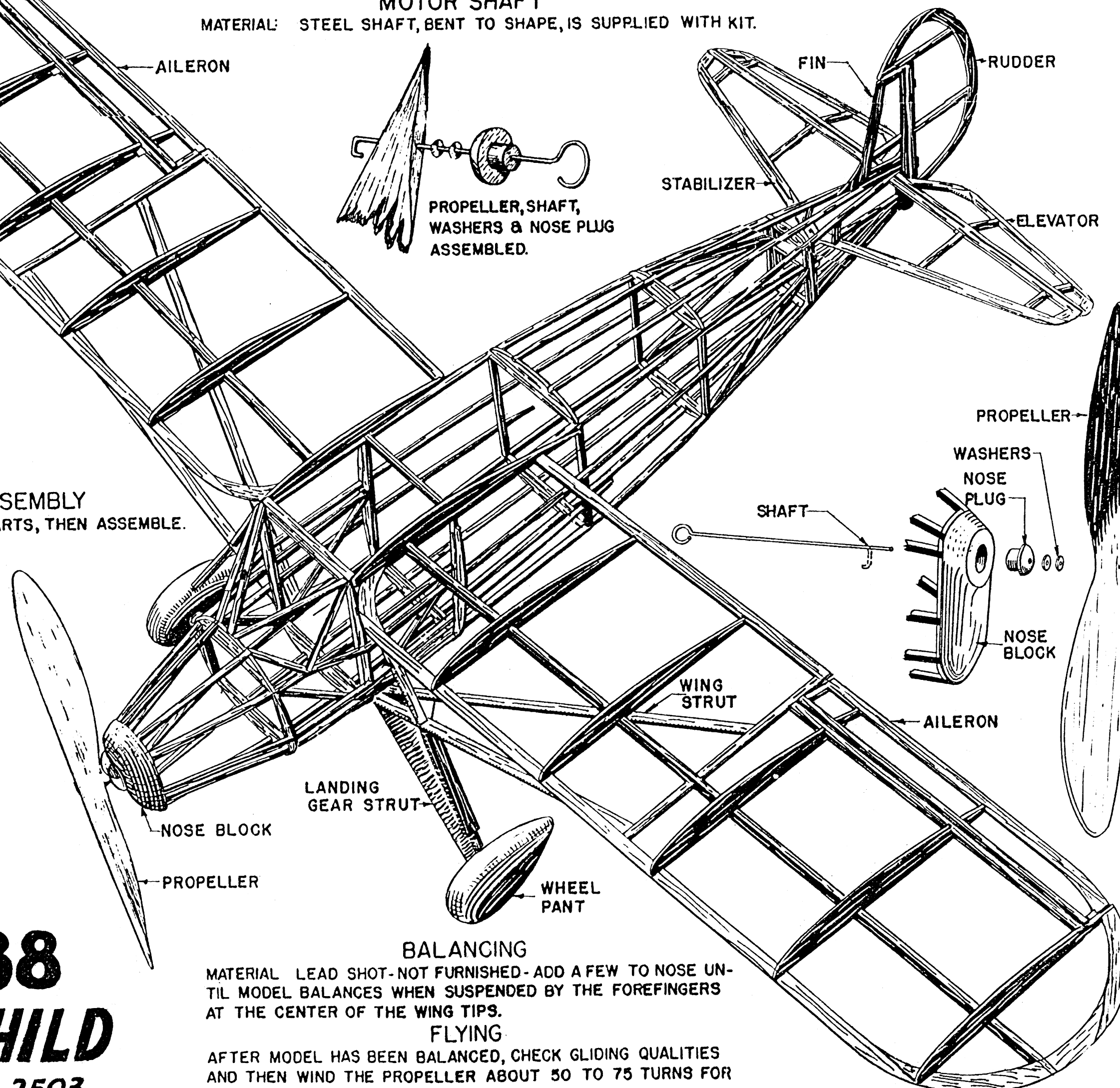


**RUDDER**  
MATERIAL: 1-16" X 3-32", 1-16" X 1-8" STRIPS AND CURVED PIECES FROM PRINTED RIB SHEET. USE HEAVY PAPER FOR HINGES.

**MOTOR SHAFT**  
MATERIAL: STEEL SHAFT, BENT TO SHAPE, IS SUPPLIED WITH KIT.



**GENERAL ASSEMBLY**  
COMPLETE AND COVER ALL PARTS, THEN ASSEMBLE.



**BALANCING**

MATERIAL: LEAD SHOT-NOT FURNISHED- ADD A FEW TO NOSE UNTIL MODEL BALANCES WHEN SUSPENDED BY THE FOREFINGERS AT THE CENTER OF THE WING TIPS.

**FLYING**

AFTER MODEL HAS BEEN BALANCED, CHECK GLIDING QUALITIES AND THEN WIND THE PROPELLER ABOUT 50 TO 75 TURNS FOR ITS FIRST TRIAL FLIGHT.

**DIHEDRAL**  
BY RIGGING A SMALL AMOUNT OF DIHEDRAL INTO THE WING THE LATERAL STABILITY OF THE MODEL IN FLIGHT WILL BE GREATLY INCREASED.

**STRIPS**

MATERIAL: ALL STRIPS ARE CUT TO THE CORRECT SIZES. SELECT THESE PARTS CAREFULLY AS CONSTRUCTION PROCEEDS.

**NOSE BLOCK**

MATERIAL: LARGE SOLID PIECE ABOUT 1-4" THICK. DRAW NOSE SHAPE WITH COMPASS AND CUT OUT.

**COVERING**

MATERIAL: TISSUE IS PUT ON BODY IN SECTIONS. COVER WING AND STABILIZER ON ONE SIDE. COVER RUDDER ON BOTH SIDES. USE DILUTED CEMENT OR FLOUR PASTE. WHEN COVERED SPRAY LIGHTLY WITH WATER AND ALLOW TO SHRINK.

**PILOT**

CEMENT TWO OPPOSITES TOGETHER AND MOUNT IN COCKPIT.



PILOT

**25" 1938 FAIRCHILD**  
*Flying Model No. 2503*