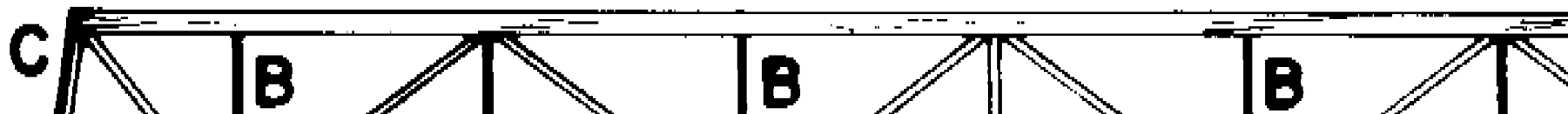
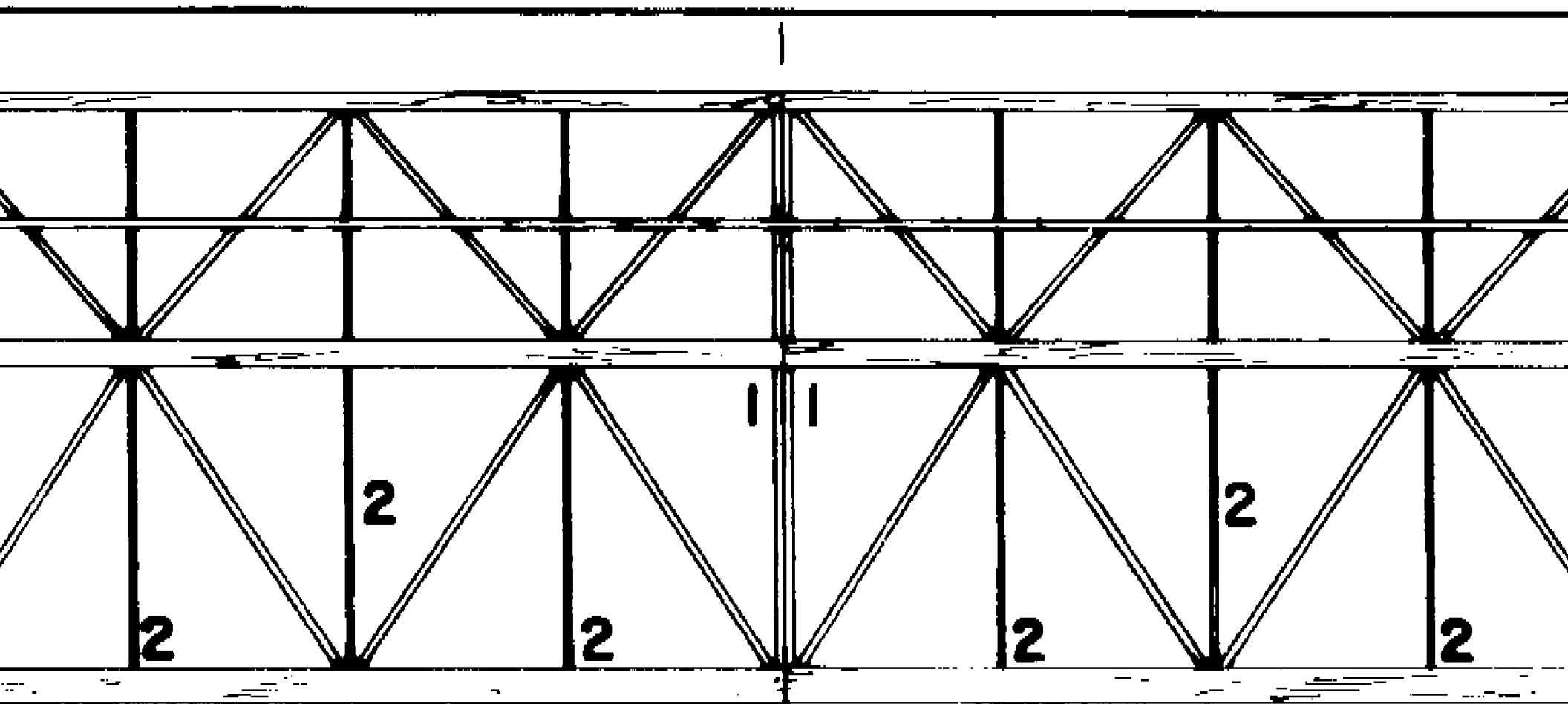
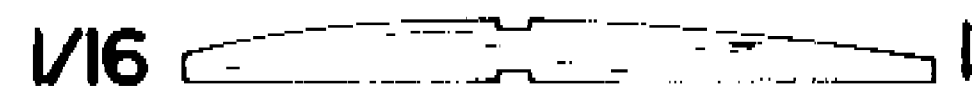
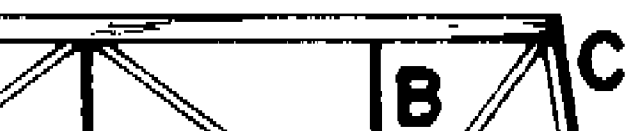


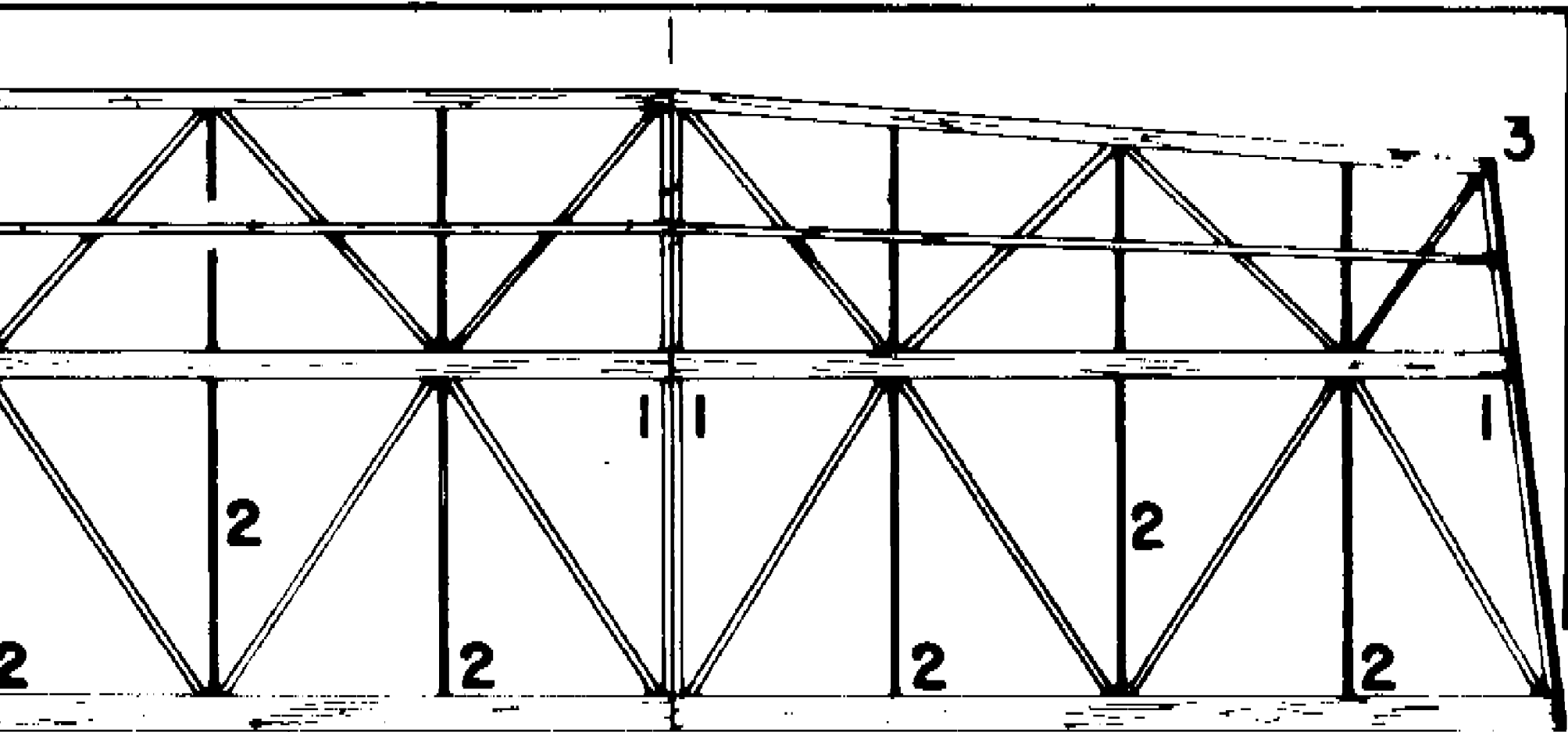
WING PLAN: LE.  $1/8''$  SQ. · FRONT SPAR  $1/16''$  SQ.



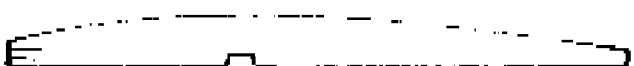


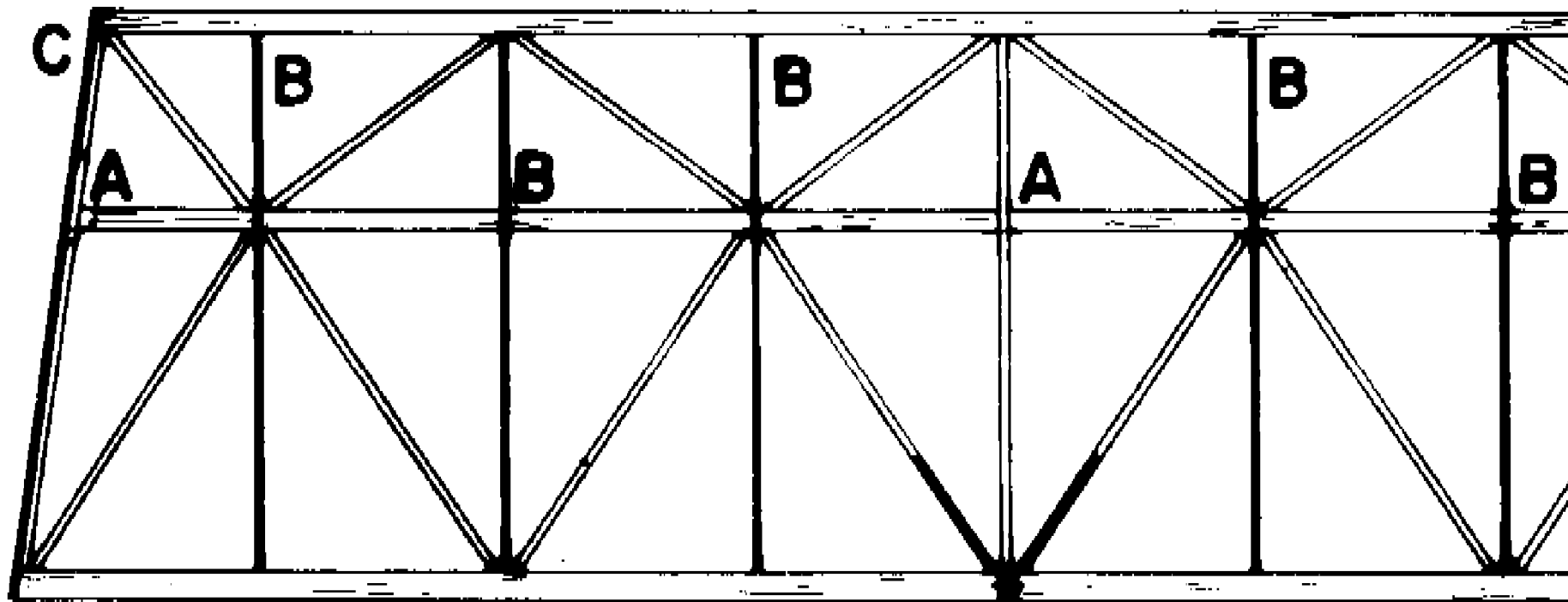
1/16" SQ. • MAIN SPARS 1/16 X 3/16" T.E. 1/8 X 1/4" RIB 1-1/2"  
 DIAGONALS 1/16" SQ. END PLATE





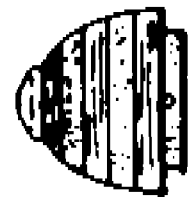
1 · 1/16" SHT., RIB 2 · 1/32" SHT.  
 D PLATE 3 · 1/32" SHEET

A & B  A · 1/16" B · 1/32"



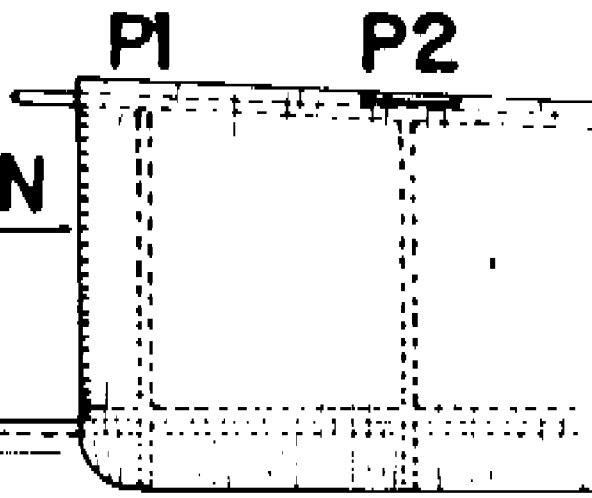
STAB PLAN: L.E.  $1/8''$  SQ.  
 ENDS  $1/32''$  SHT.

T.E.  $3/32 \times 3/16''$



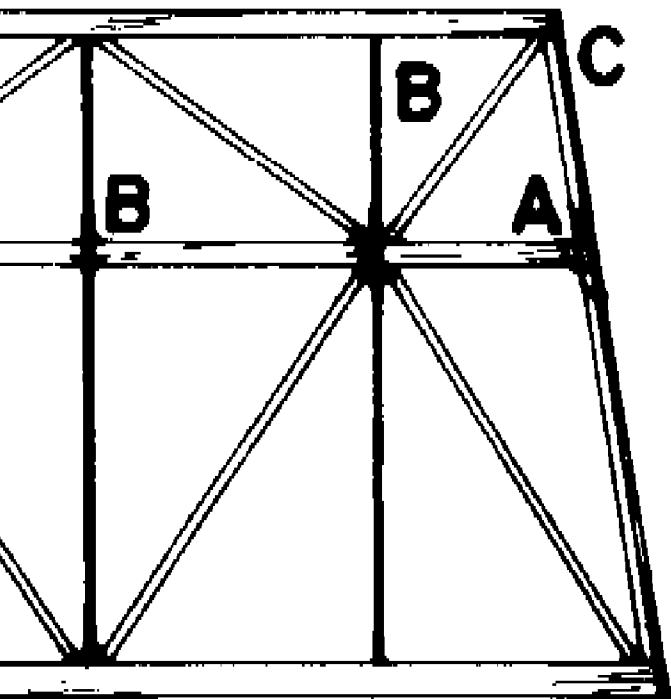
NOSE BLOCK & PLUG  
 6 LAMS.  $1/8''$  SHT.  
 NYLON BEARING

PYLON

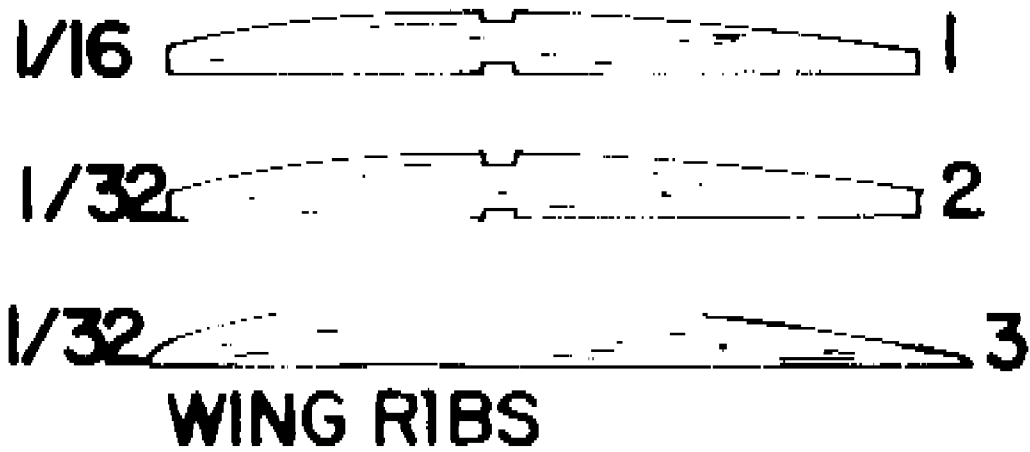


4°  
 DOWN

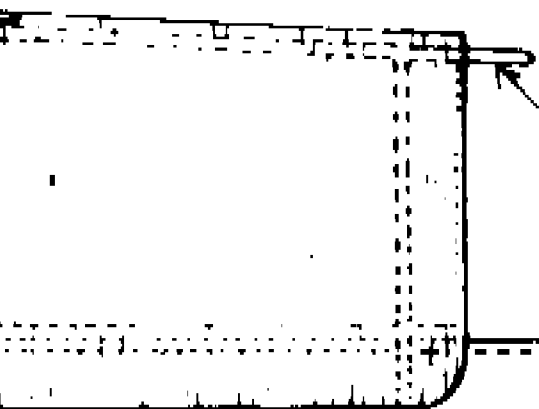
FUSELAGE - SIDE VIEW



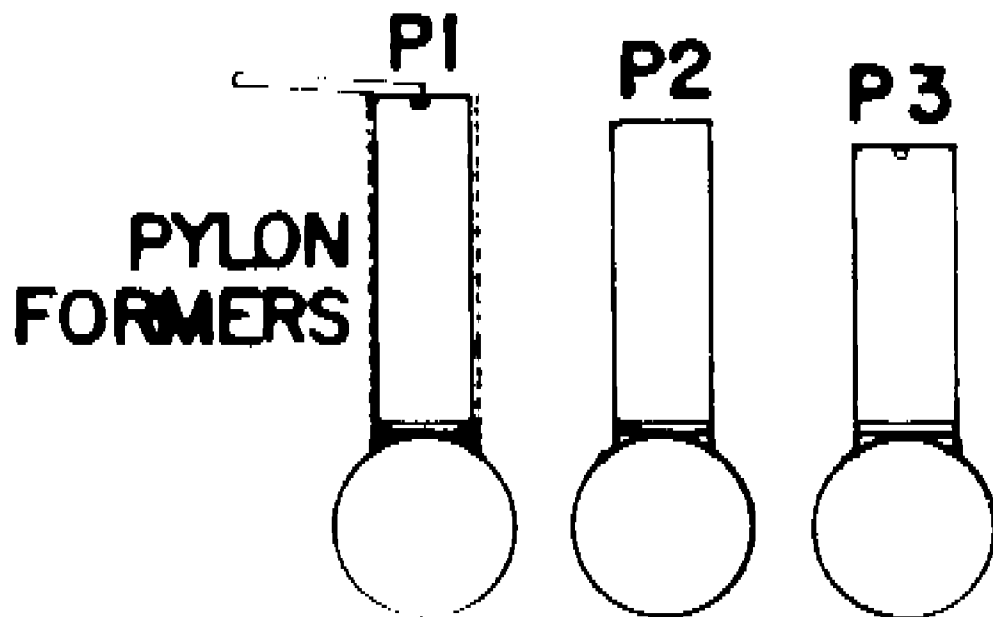
1/16" DIAG. 1/16" SQ.

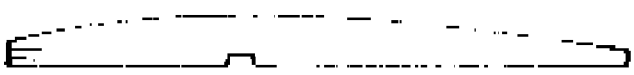
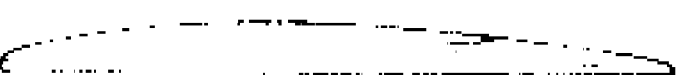


2 P3

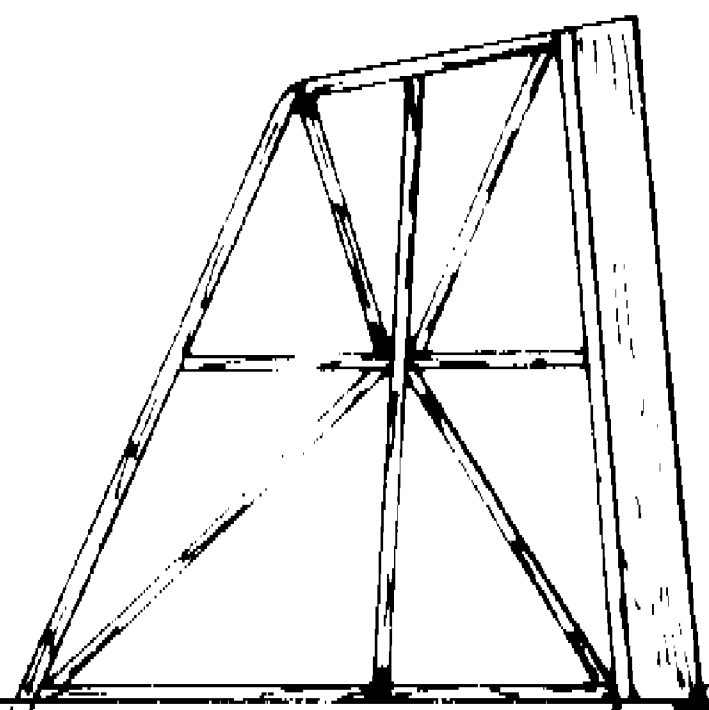


1/16" DOWEL



A & B  A · 1/16" B · 1/32"  
C  C · 1/32"

**STAB RIBS**



FIN  
3/32" SQ. &  
3/32" SHEET



EXTEND FIN TO  
LOWER BOTTOM

SNUFFER  
TUBE

4°  
DOWN

# FUSELAGE - SIDE VIEW

2°  
RIGHT

# TOP VIEW

1/16  
WIN

1-3/16"  
2" TOTAL

TIP

1/2"

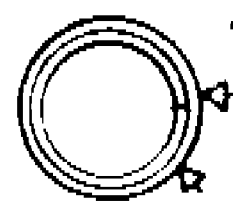
DIHEDRAL TEM

0" 1" 2" 3" 4" 5" 6" 7" 8"

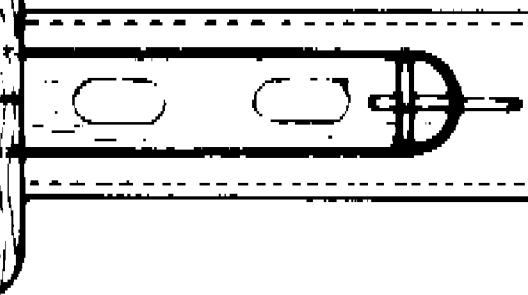
SCALE:



1/16" PLY  
WING MOUNT



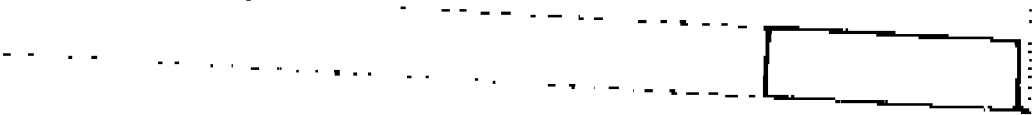
TYPICAL CROSS SECTION  
INCL. 1/16" SHT. LAMS.



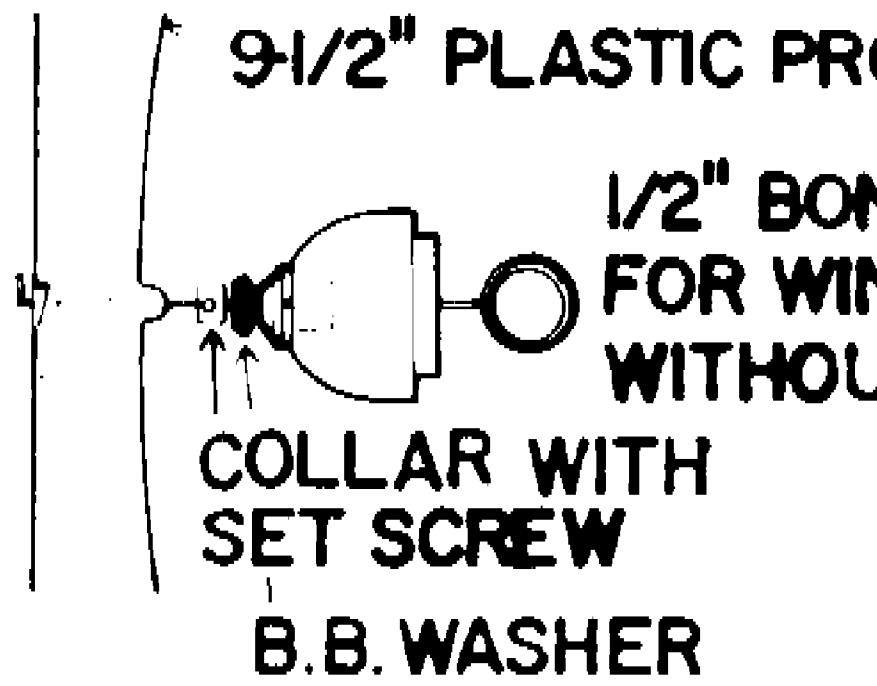
1/8" O.D. A

TEMPLATES

CENTER



8" 9" 10" 11" 12"





CTION  
S.

EXTEND FIN TO  
JOIN TO BOTTOM  
OF FUSE.

SNUFFER  
TUBE

1/32" PLY.  
STAB MOUNT

O.D. ALUM. TUBING

C PROP

" BONE RING  
R WINDING  
THOUT PROP

KRINE LAFFLER'S BLUE FIN



SPAN, FLAT, 30" · LENGTH 29.3/4"

DRAWN & TRACED by P. SECORA