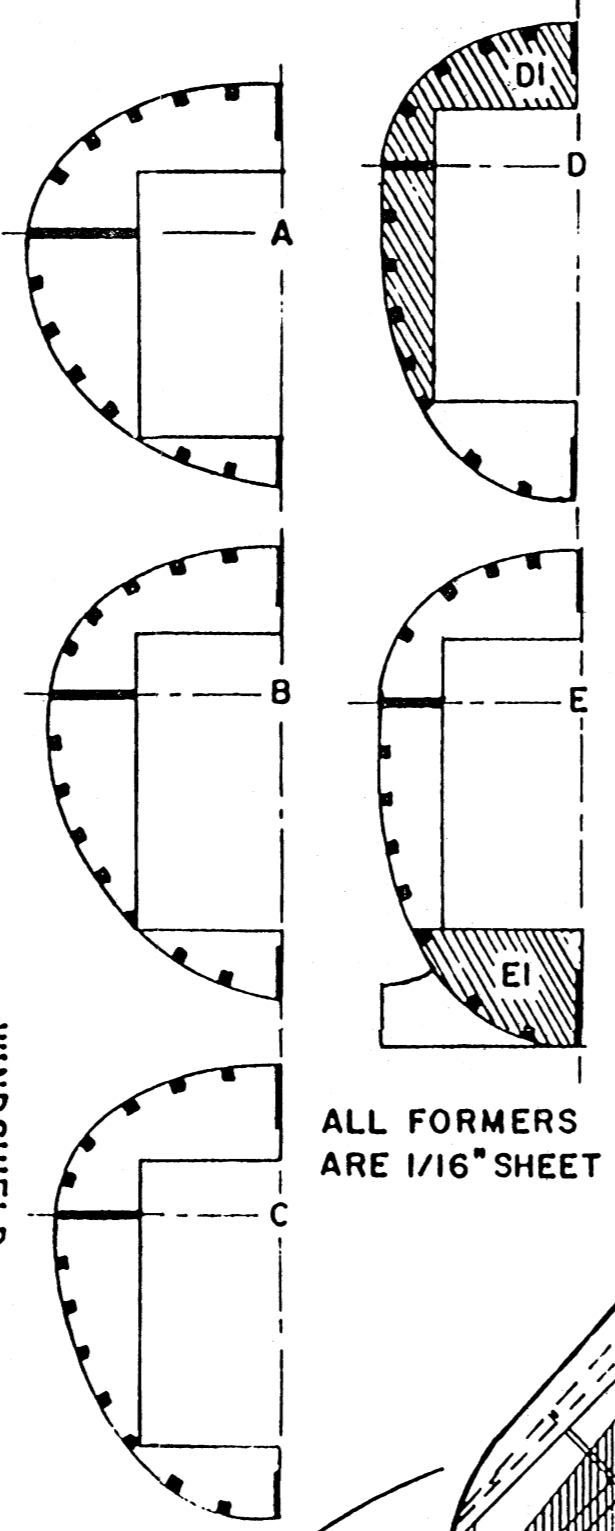


FUSELAGE SIDE PATTERN (2 REQ'D.)

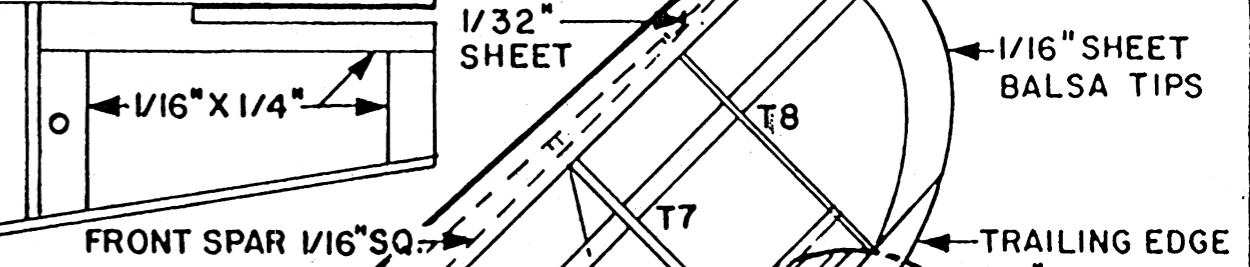
FILL IN BETWEEN STRINGERS WITH 1/16" SHT. TOP OF FUSELAGE FROM C TO F & FROM SIDE KEEL TO SIDE KEEL.
 FILL IN BETWEEN STRINGERS WITH 1/16" SHT. ALL AROUND COWL FROM FORMER A TO C
 TOP KEEL 1/16" SHT.



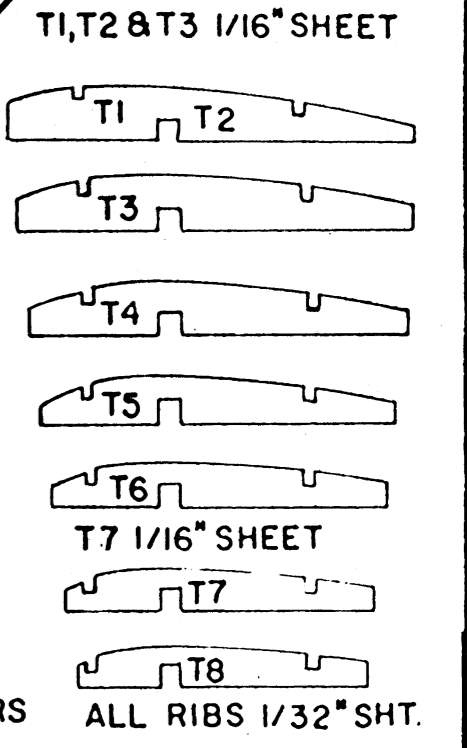
ALL FORMERS ARE 1/16" SHEET

SUN RAYS COLOR PATTERN ARE ALSO ON RIGHT WING

1/16" SQ. FUSE-LAGE FRAME



FRONT SPAR 1/16" SQ.
 LEADING EDGE 1/8" X 1/4"

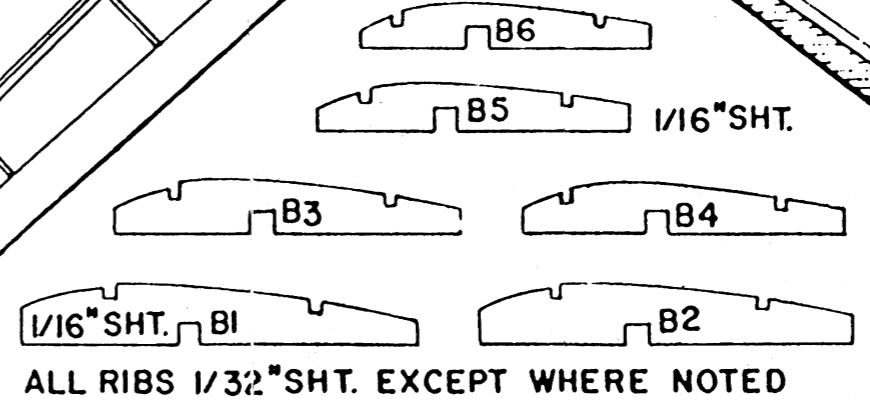


MAIN SPAR 1/8" SQ.

1/16" SHEET KEEL SIDE

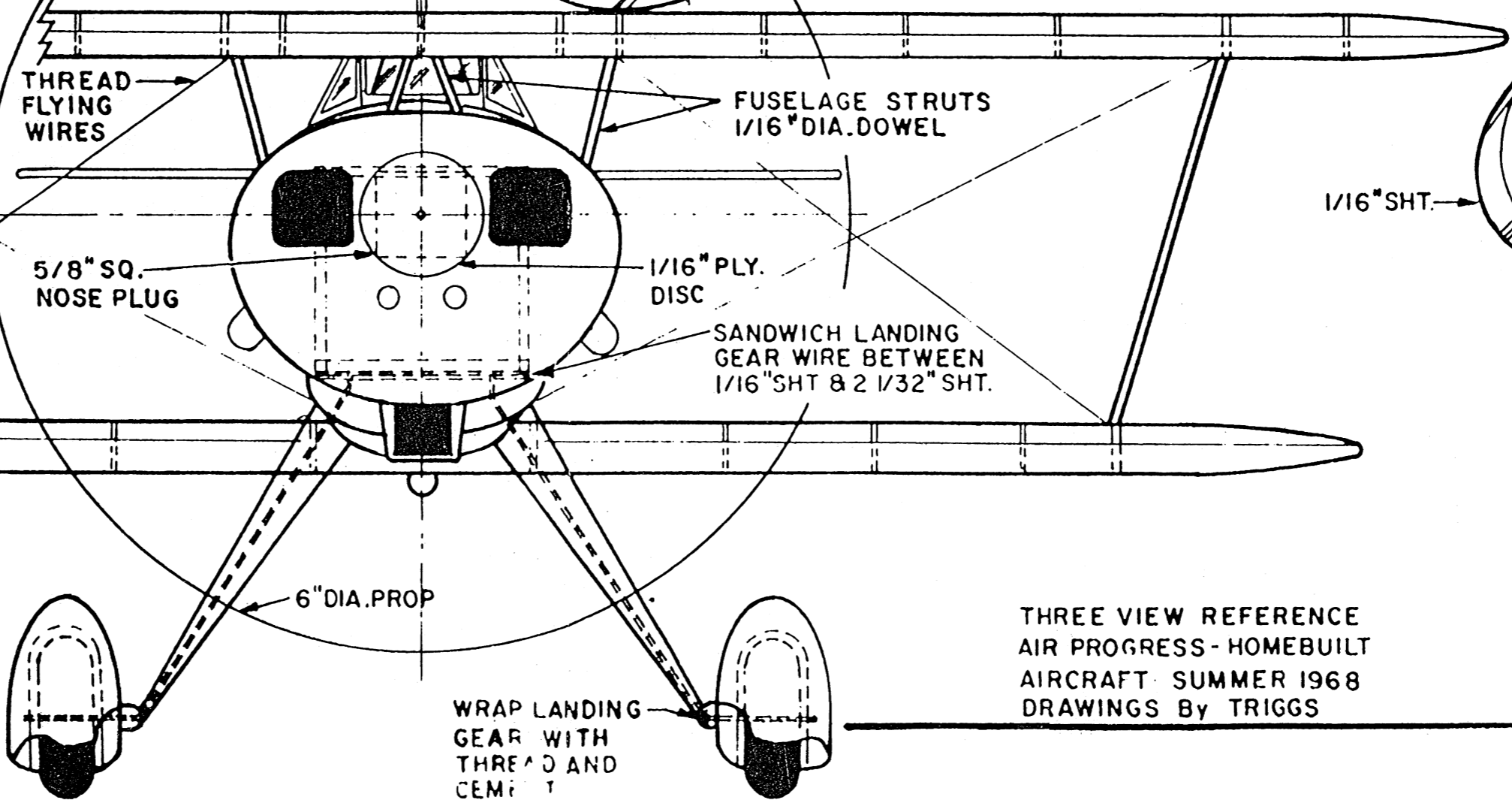
1/16" SQ. STRINGERS

ALL RIBS 1/32" SHT.



ALL RIBS 1/32" SHT. EXCEPT WHERE NOTED

3/32" DIA. ALUM. TUBING MOTOR PEG



WRAP LANDING GEAR WITH THREAD AND CEMENT

THREE VIEW REFERENCE AIR PROGRESS - HOMEBUILT AIRCRAFT - SUMMER 1968 DRAWINGS BY TRIGGS

SCALE 1" = 1"

1928 "Knight Twister"

