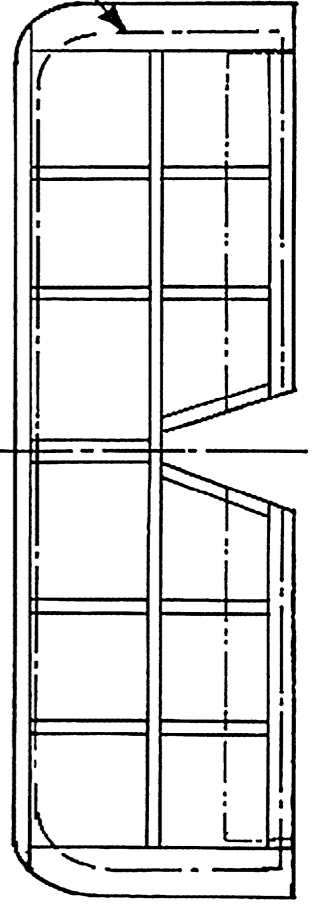
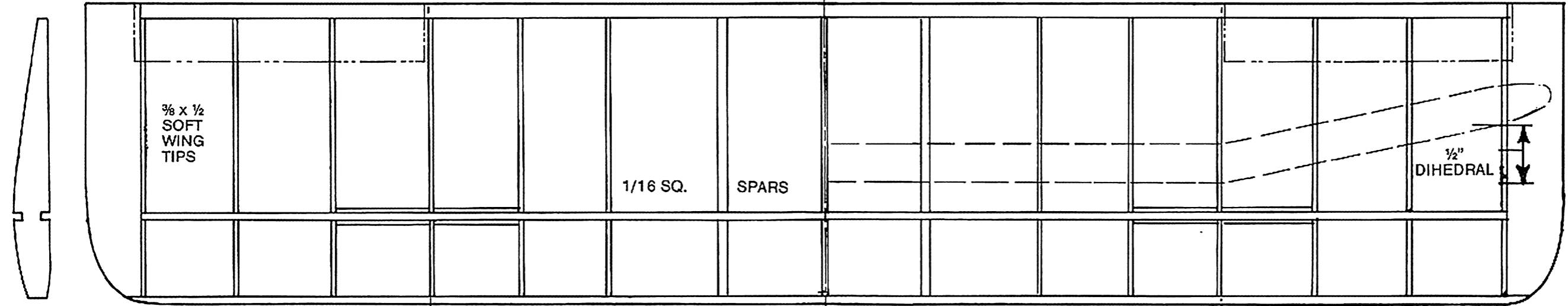


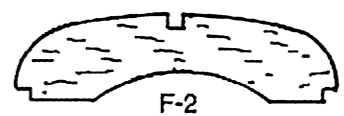
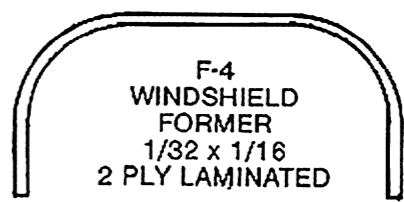
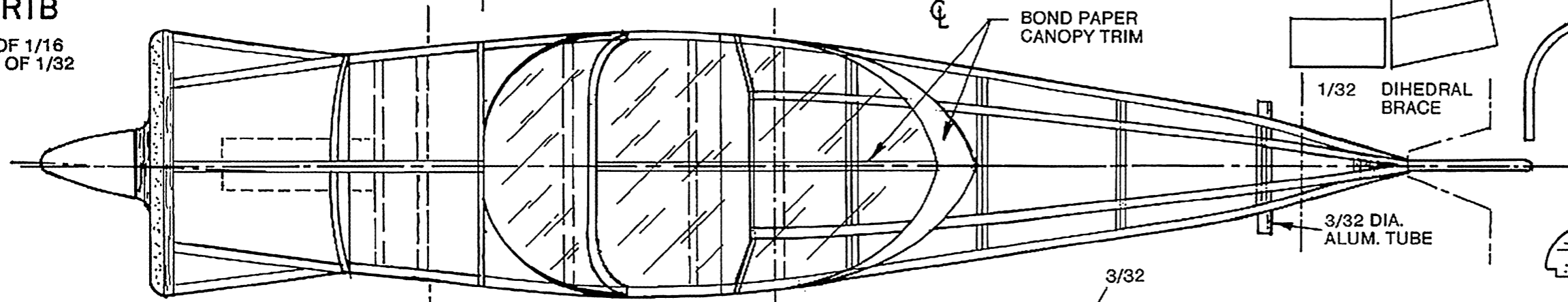
1/16 x 1/8 LEADING AND TRAILING EDGES

SCALE OUTLINE

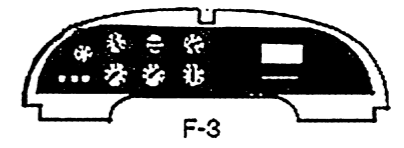


RIB

2 OF 1/16
13 OF 1/32

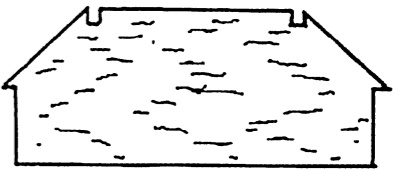
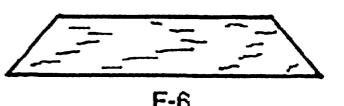
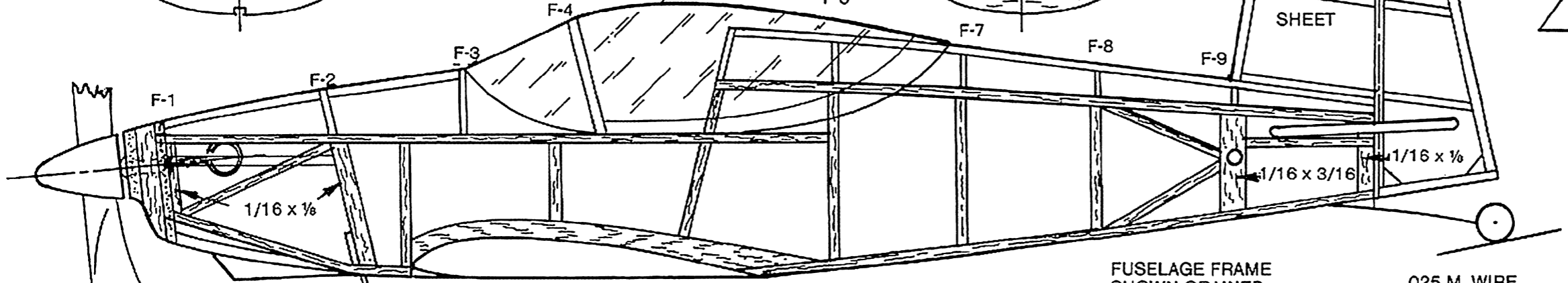
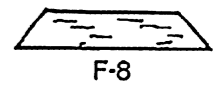
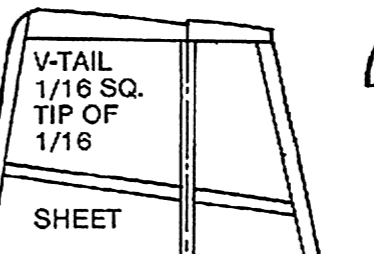
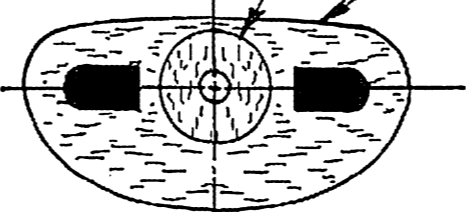
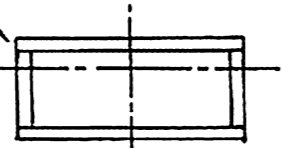
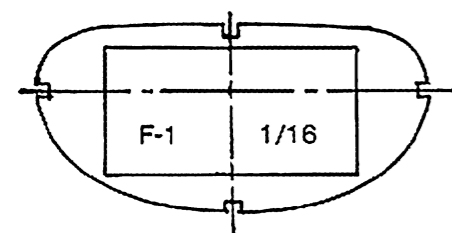


H-TAIL OF 1/16 SQ.
1/16 x 1/8 & 1/16 SHEET



1/16 x 1/8 NOSE BLOCK BACK

3/32
1/8 NOSE BLOCK



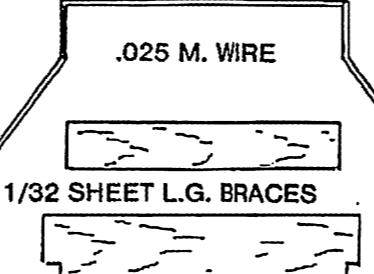
3/16 x 3/8 BLOCK

4 3/4" DIA. PROP.

3/4" DIA. WHEELS

FUSELAGE FRAME SHOWN GRAINED

.025 M. WIRE TAIL WHEEL



1/16 SQ. EXCEPT AS NOTED

FORMERS F-2, F-3 & F-5 THRU F-9 of 1/32 SHEET
Text on pages 74-75

POWER - 1 LOOP 3/32
FLAT RUBBER 11" LONG

THORP T-18 TIGER PEANUT SCALE

BY: HAL STEWART

1985