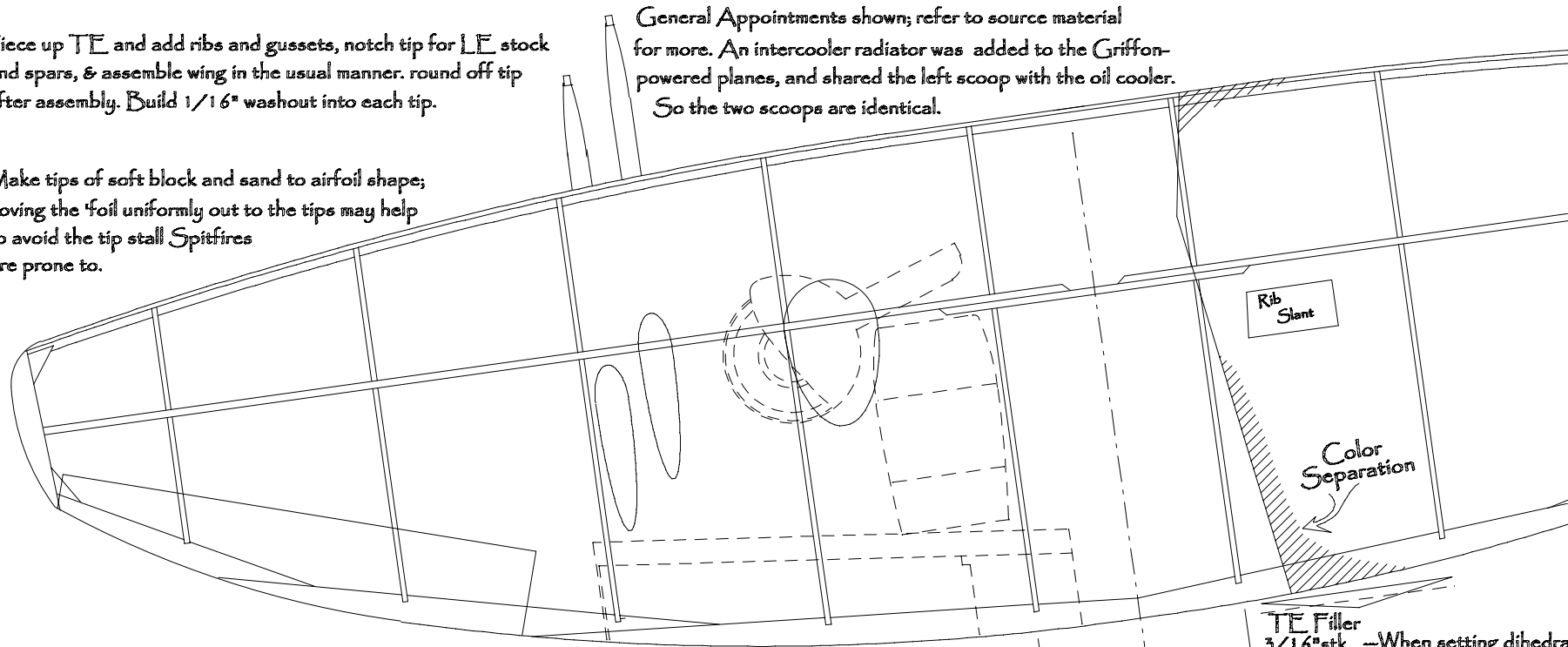


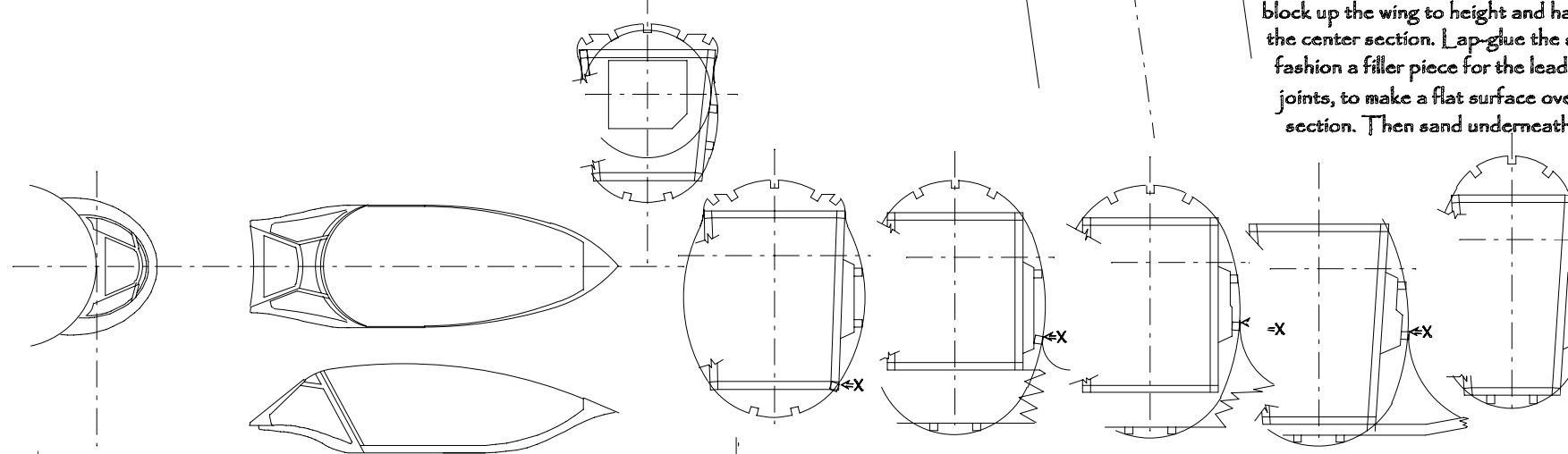
Piece up TE and add ribs and gussets, notch tip for LE stock and spars, & assemble wing in the usual manner. round off tip after assembly. Build 1/16" washout into each tip.

Make tips of soft block and sand to airfoil shape; moving the foil uniformly out to the tips may help to avoid the tip stall Spitfires are prone to.

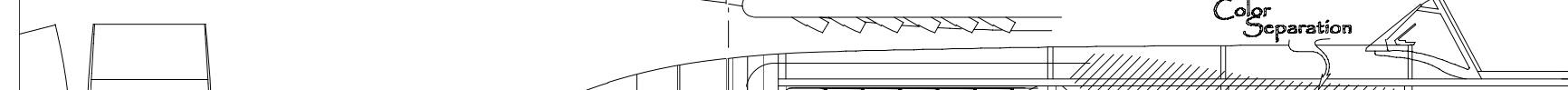
General Appointments shown; refer to source material for more. An intercooler radiator was added to the Griffon-powered planes, and shared the left scoop with the oil cooler. So the two scoops are identical.

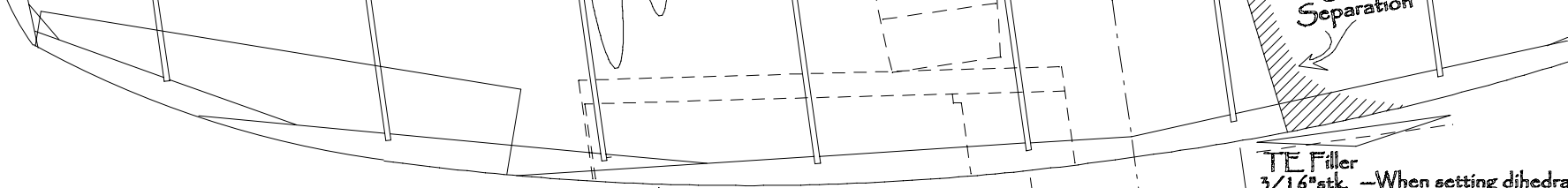


TE Filler
3/16"stk --When setting dihedral
block up the wing to height and ha
the center section. Lap-glue the
fashion a filler piece for the lead
joints, to make a flat surface ove
section. Then sand underneath

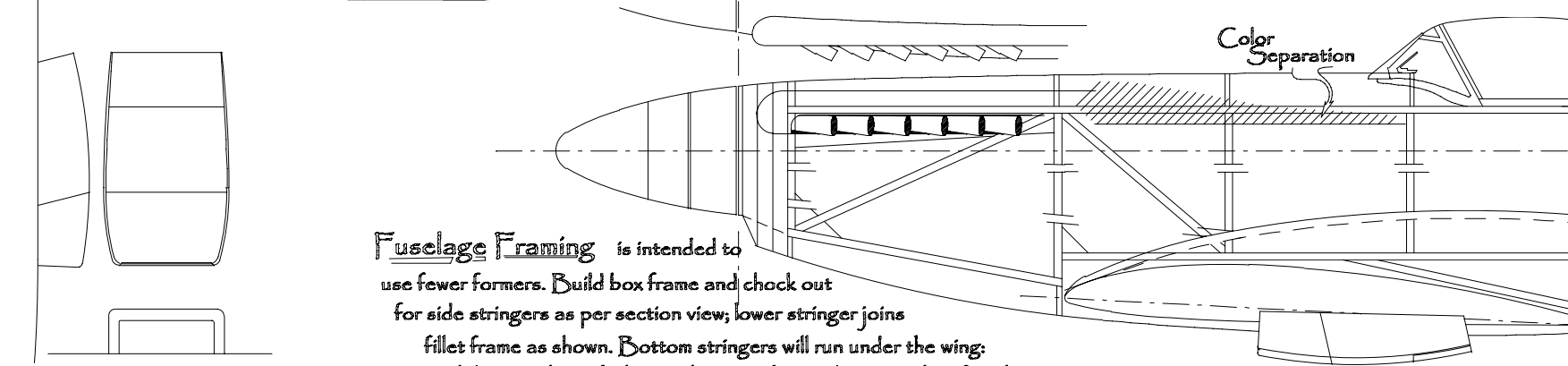
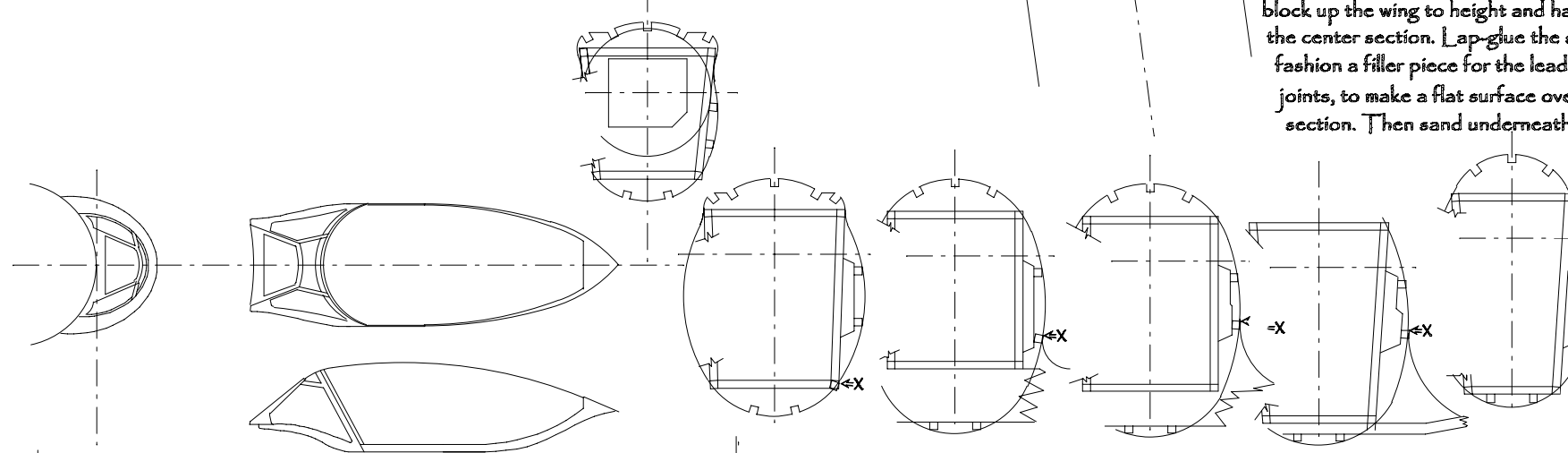


Color Separation

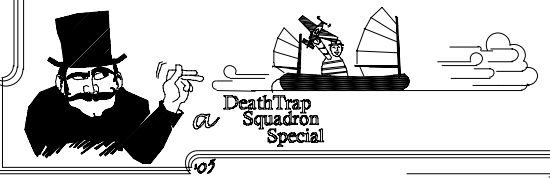




TE Filler
 3/16"stk. --When setting dihedral
 block up the wing to height and ha
 the center section. Lap-glue the
 fashion a filler piece for the lead
 joints, to make a flat surface ove
 section. Then sand underneath

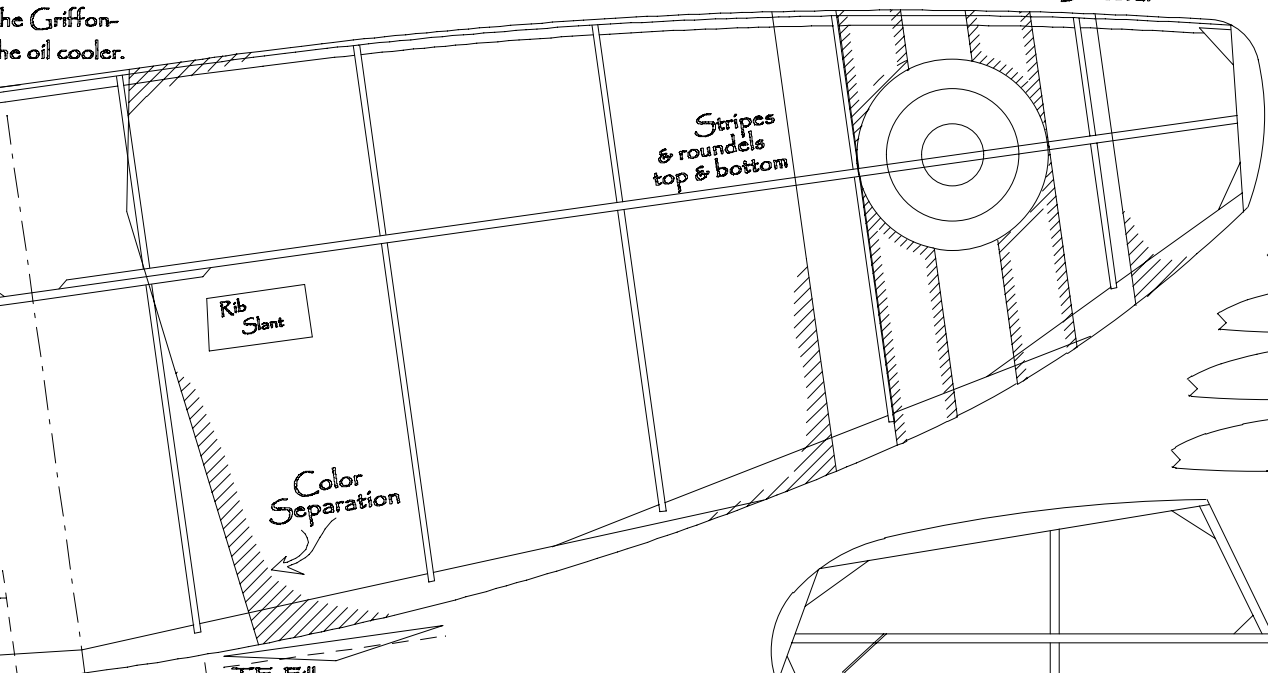


Fuselage Framing is intended to
 use fewer formers. Build box frame and check out
 for side stringers as per section view; lower stringer joins
 fillet frame as shown. Bottom stringers will run under the wing:
 slide wing through the resultant pocket and secure, then fair the area
 with your favorite material.

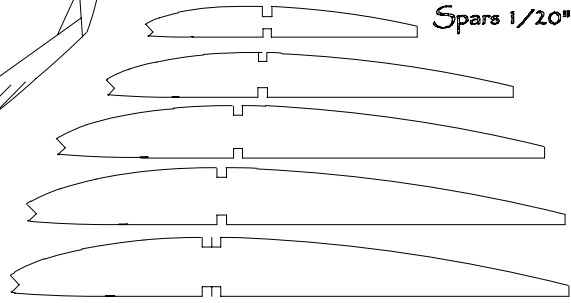


Peanut Scale
Seafire Mk
 & Rockland F. Russo
 Michael J. Heinrich

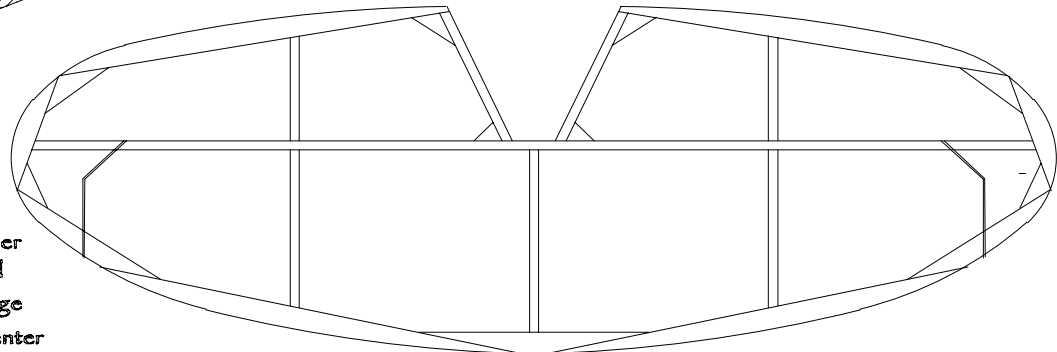
Material
 the Griffon
 the oil cooler.



LE 1/16" sq.
 TE 1/20"
 Ribs 1/32" Tips 5/32"
 Spars 1/20" sq.

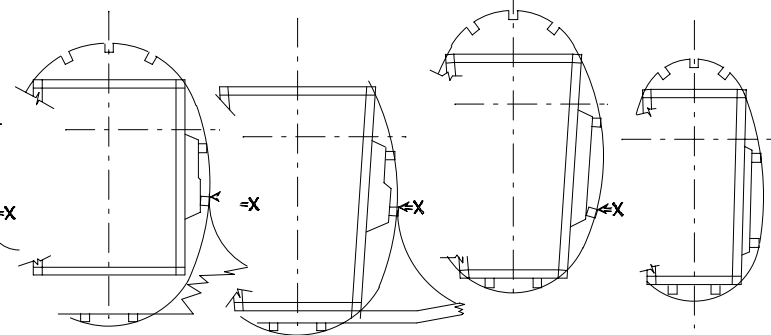


TE Filler
 3/16" stk. --When setting dihedral,
 block up the wing to height and have some room under
 the center section. Lap-glue the spar as shown, and
 fashion a filler piece for the leading and trailing edge
 joints, to make a flat surface over the top in the center
 section. Then sand underneath to thickness.



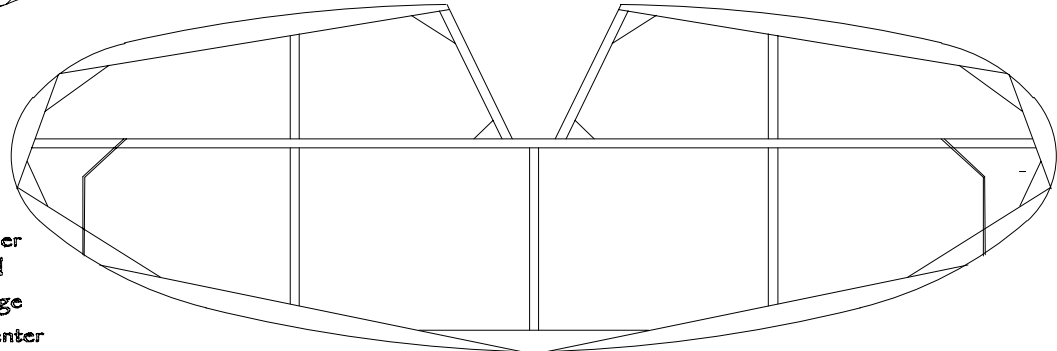
Markings show a plane from FAA 800 Sqn.
 aboard HMS *Triumph* in 1950, when she found
 herself an unexpected guest at North Korea's little
 surprise party. Seafires flew combat patrols and
 some rail strikes between July and September.
 Stripes were applied to the planes after one was
 shot down by a nervous American B-29 crew.
 Colors are Extra Dark Sea Grey over Sky,
 and white stripes.

Tailfeathers are shown as built
 with 1/20" stock and with flat stock a
 nominal 1/20"x1/8" strip size. As always,
 you might vary the construction based on
 your taste and the interests of lightness.



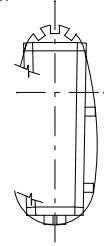
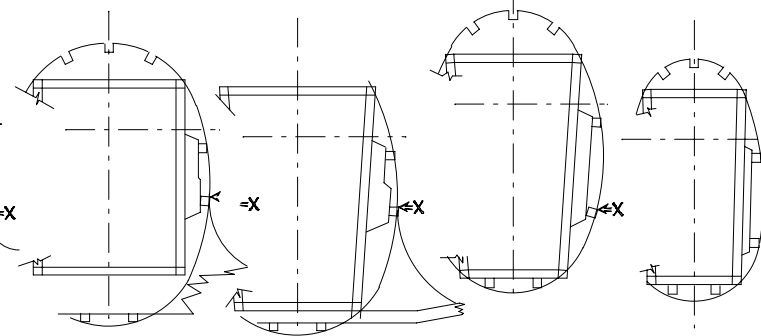
Separation

TE Filler
3/16"stk. -When setting dihedral, block up the wing to height and have some room under the center section. Lap-glue the spar as shown, and fashion a filler piece for the leading and trailing edge joints, to make a flat surface over the top in the center section. Then sand underneath to thickness.

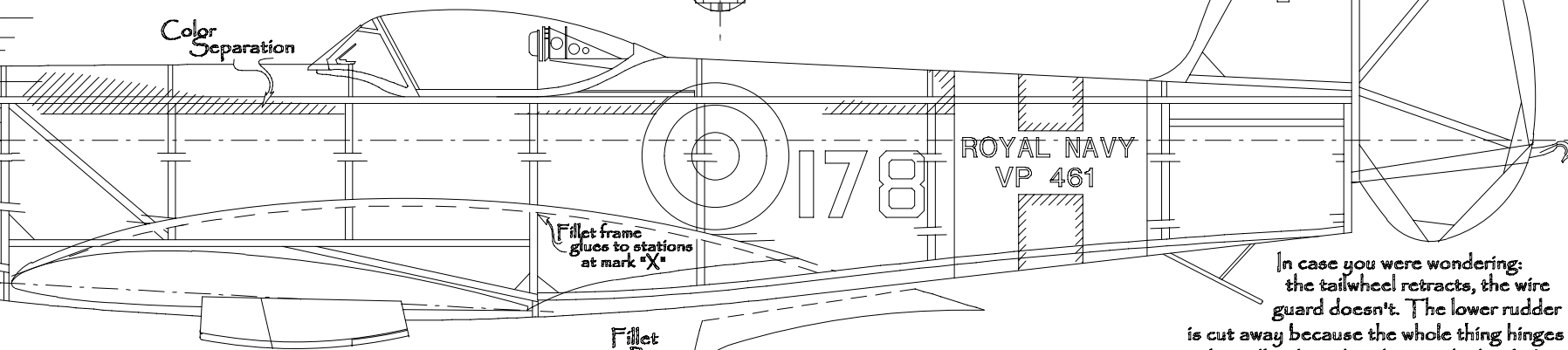


Markings show a plane from FAA 800 Sqn. aboard HMS *Triumph* in 1950, when she found herself an unexpected guest at North Korea's little surprise party. Seafires flew combat patrols and some rail strikes between July and September. Stripes were applied to the planes after one was shot down by a nervous American B-29 crew. Colors are Extra Dark Sea Grey over Sky, and white stripes.

Tailfeathers are shown as built with 1/20" stock and with flat stock a nominal 1/20"x1/8" strip size. As always, you might vary the construction based on your taste and the interests of lightness.



Color Separation



Fillet Piece

In case you were wondering: the tailwheel retracts, the wire guard doesn't. The lower rudder is cut away because the whole thing hinges at the tailhook anchor, letting the hook drop at landing. The hook telescopes out nearly twice its stowed length.

Peanut Scale
Seafire Mk47

& Rockland F. Russo
Michael J. Heinrich

"...The problem was solved simply by ignoring it..."