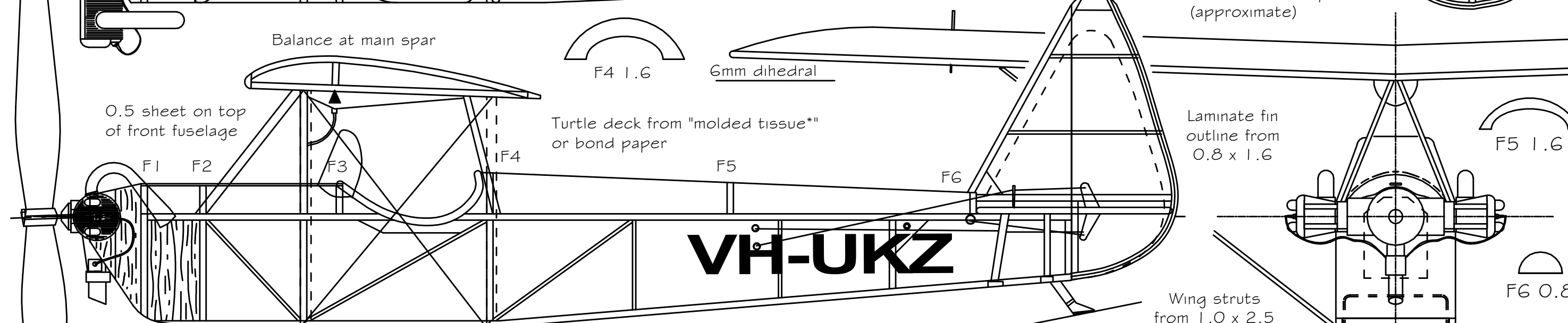
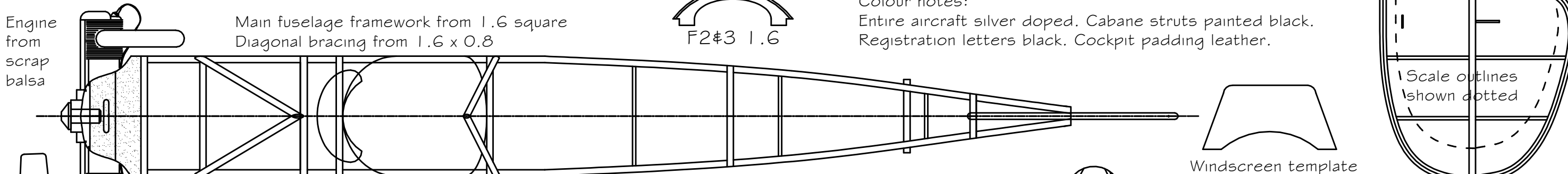
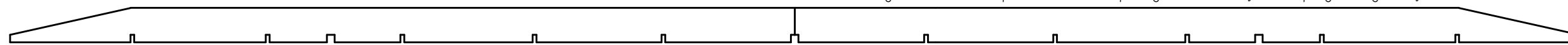


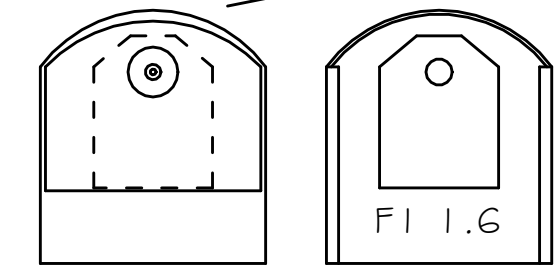
Wing spar 0.8 x 7.2. Lower rib sections are slotted into spar, upper rib sections are glued to top of spar.

\* For a description of the "molded tissue" technique, look at the following website: <http://www.mindspring.com/~thayer5/ffpages/ffgallery/buxton/ma2.html>



**VH-UKZ**

**Amsco Monoplane**  
Span: 13 in  
Wing area: 36.4 sq in  
Weight: 14g  
Wing loading: 2 oz/sq ft  
Designed by Derek Buckmaster  
(from a 3-view by Alex Pedashenko)  
<http://dbdesignbureau.Ocatch.com>



Cowl front view