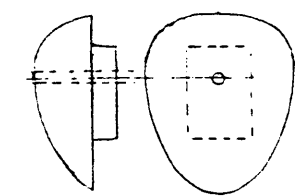
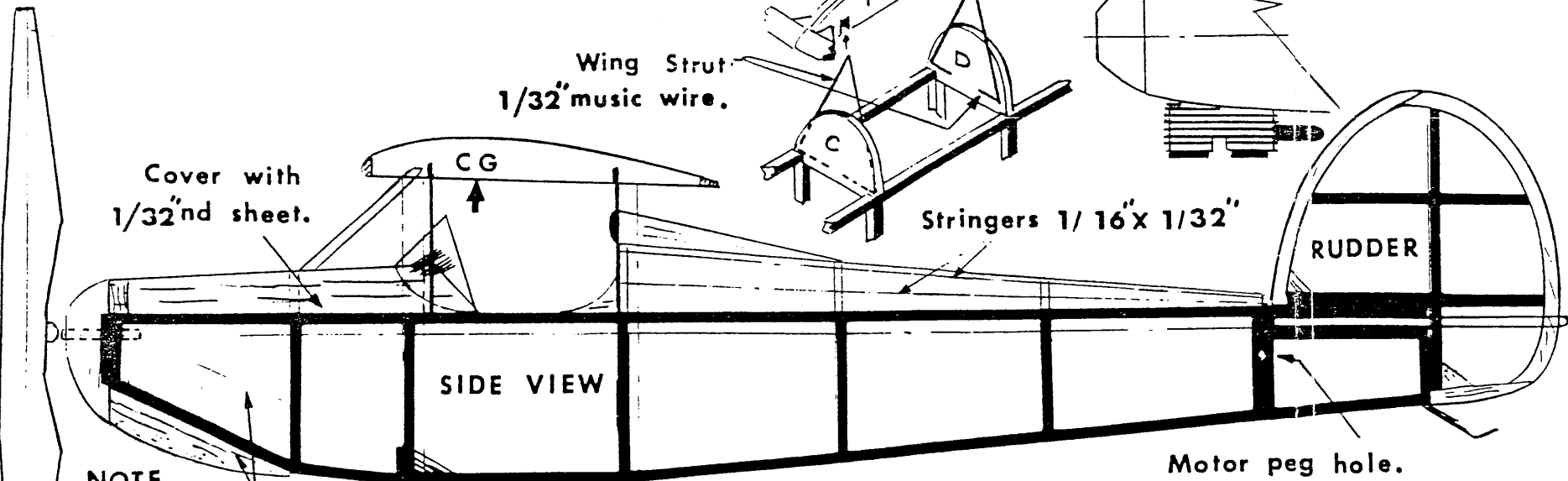
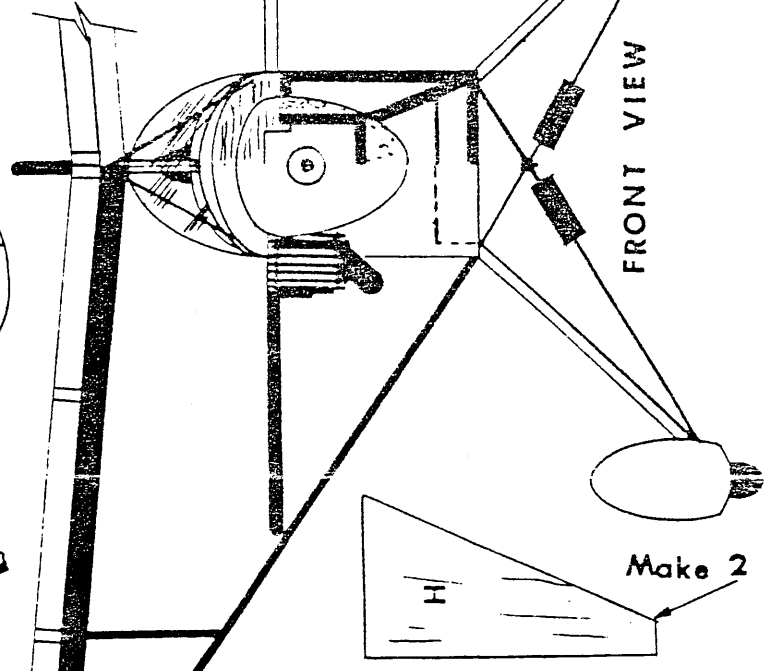
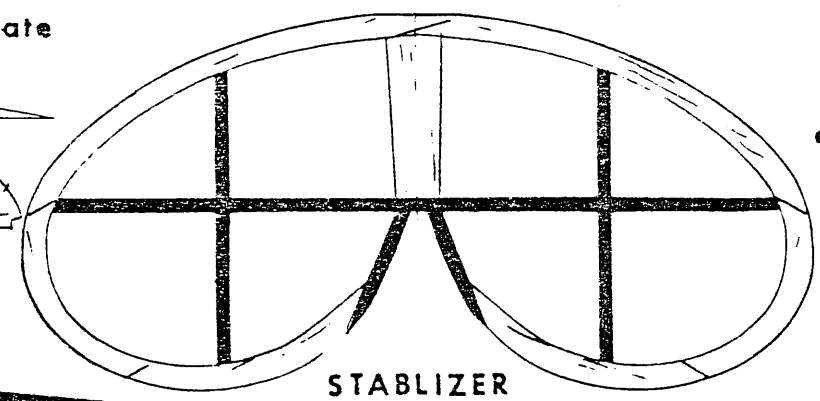
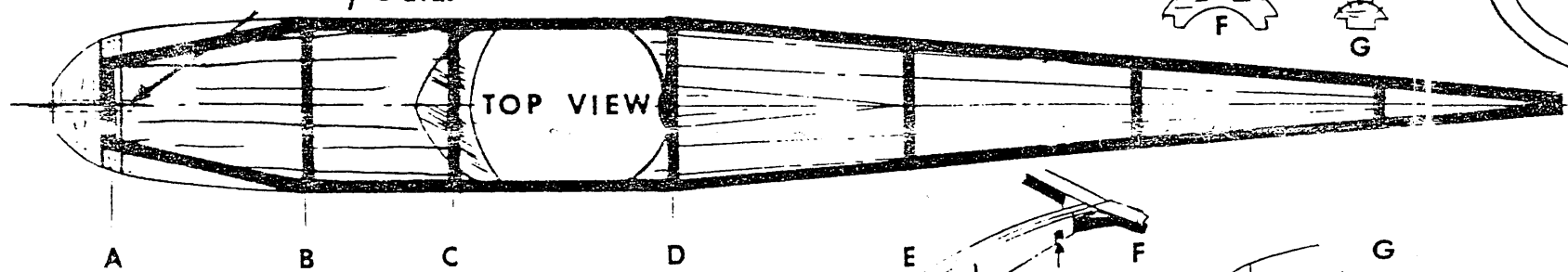
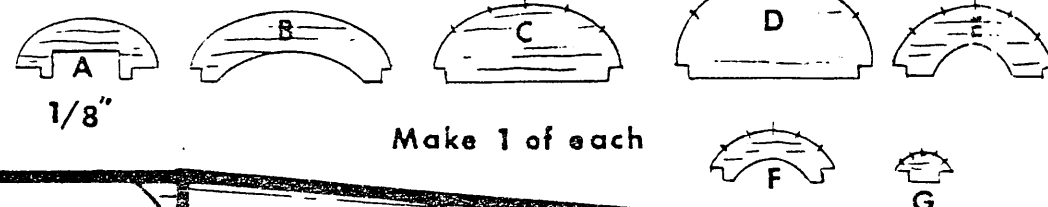


NOTE Nose block is removable and has a locating block on the back side that fits inside the fuselage structure.

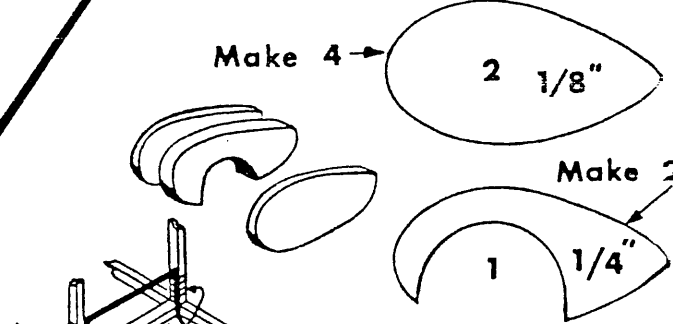
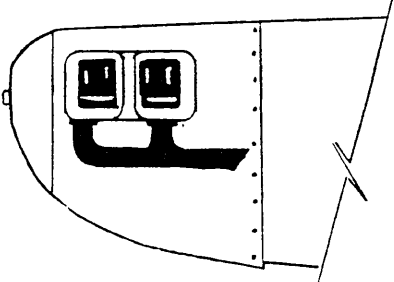
Slant root ribs for dihedral angle use template



Alum tube 1/16" dia.



BABY ACE



Landing gear and Prop hook 1/32" music wire Use front view to bend landing gear wire.

NOTE Use balsa blocks on sides and bottom. Carve-sand to fit.

NOTE All parts, unless otherwise noted, are 1/16" thick balsa.

NOTE Build 2 fuselage side frames (Black outline) directly over the plan. Use 1/16" sq and 1/16" X 1/8" balsa.

Take finished side frames and build a box

Dihedral 5/8"

© 1973

Cutdown Sleek-Steek propeller