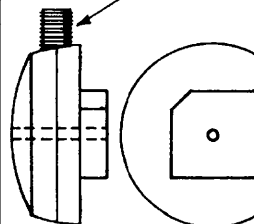


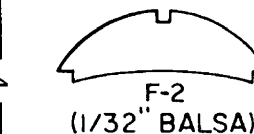
DUMMY CYLINDER
MAKE 9 FROM
THREAD-WOUND
SODA STRAW



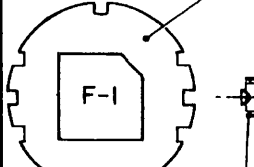
SIDE VIEW
REAR VIEW

PROP SHAFT BEARING
(1/16" DIAMETER METAL TUBE)

PROP HOOK
(.030 DIA. WIRE)

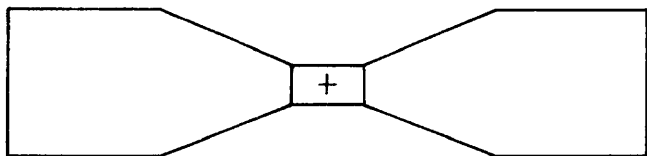


1/16" HARD SHEET OR PLYWOOD



FRONT

SCALE PROP
BLUE
YELLOW
RED



PROP BLANK
(1/2" THICK BALSA)

THIS MEMBER ON TOP ONLY

L.G. MOUNTS (BOTTOM ONLY)

THIS MEMBER ON BOTTOM ONLY

STRUT
CROSS
SECTION

WING STRUT, 1/16" THICK (MAKE 4) TRIM TO EXACT LENGTH BY TRIAL

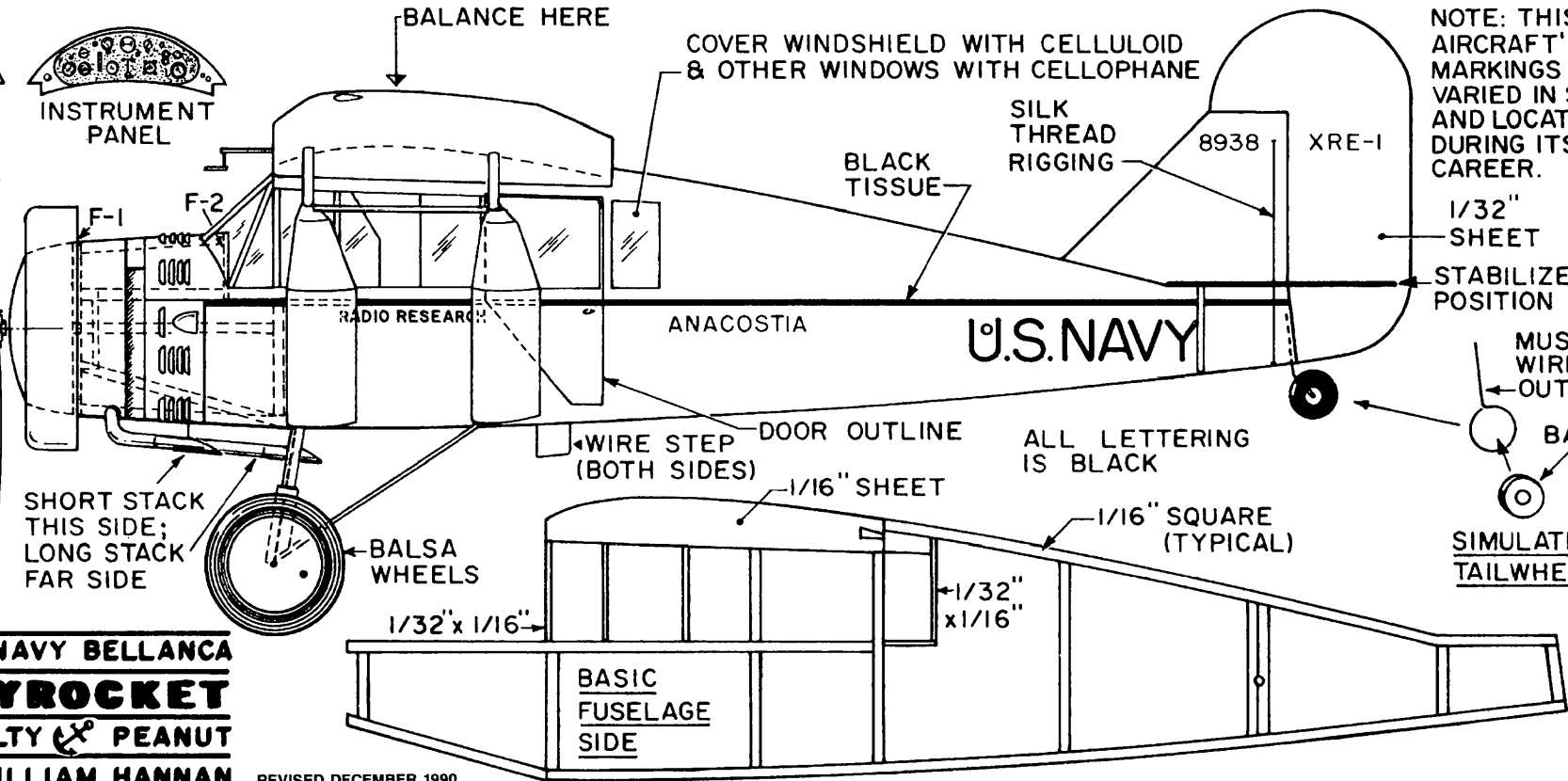
FRONT STRUTS ONLY, CHANGE ANGLE AT THIS LINE (SEE FRONT VIEW)

REFERENCES:

AERO DIGEST JULY, 1929
AERO DIGEST APRIL, 1931
PHOTO, BARRERA ARCHIVES
U.S. NAVY AIRCRAFT 1921-1941

COLOR SCHEME:

FUSELAGE, FIN, RUDDER, STRUTS, BOTTOM OF WINGS AND STAB ARE SILVER. TOP OF WINGS AND STAB ARE CHROME YELLOW.



NOTE: THIS AIRCRAFT'S MARKINGS VARIED IN SIZE AND LOCATION DURING ITS CAREER.

1/32" SHEET
STABILIZER POSITION

MUSIC WIRE OUTLINE
BALSA
SIMULATED TAILWHEEL



**U.S. NAVY BELLANCA
SKYROCKET
A SALTY PEANUT
BY WILLIAM HANNAN**

REVISED DECEMBER 1990

FRONT WINDSHIELD POSTS
ARE 1/32" SQUARE BALSA.

THANKS TO
RUSS BARRERA
FOR
RESEARCH
ASSISTANCE!

3/8" DIHEDRAL
EACH
TIP

SCALE STAB
OUTLINE

STRUT MOUNTS

RIGGING POINTS

1/32"
SHEET

ALL WOOD IS BALSA EXCEPT WHERE NOTED.

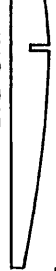
GREEN LIGHT

1/32"
SHEET
(HARD)

L.G. MOUNT
(MAKE 2)

.020 DIA.
MUSIC WIRE
L.G. STRUTS

WING RIB
(MAKE 4, 1/16" SHEET)
(MAKE 10, 1/32" SHEET)



NOTE: TRAILING EDGES MEET
IN CENTER OF FUSELAGE.
TRIM TO LENGTH BY TRIAL.

AILERON OUTLINE

1/8" x 1/16"

RAISE TIPS 1/16"
DURING
CONSTRUCTION

1/16"
SQUARE

CARDBOARD OR
BALSA RING

BOND PAPER STRIP
OR, ENTIRE COWLING
MAY BE FORMED FROM
PLASTIC, OVER A "D"
SIZE FLASHLIGHT BATTERY.

PLUG MUST BE
A SNUG FIT
INTO F-1

NOSE ASSEMBLY

(REMOVABLE FOR WINDING)

SET
ROOT
RIBS AT
ANGLE
FOR
DIHEDRAL

1/32" x 3/32"
SPAR

INSIGNIA
ON TOP
AND
LOWER
SIDE,
BOTH
WINGS

BLUE
RED
WHITE

1/16" SQUARE ON EDGE

PITOT TUBE

RED
LIGHT

