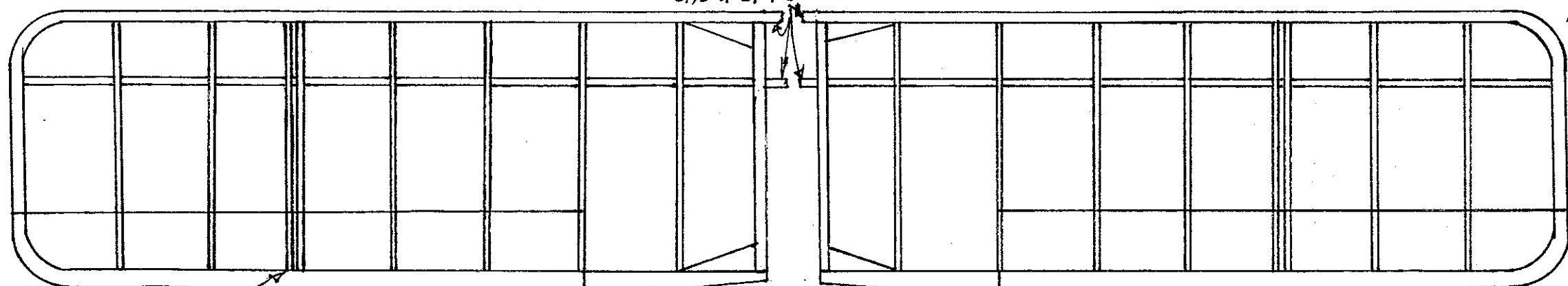
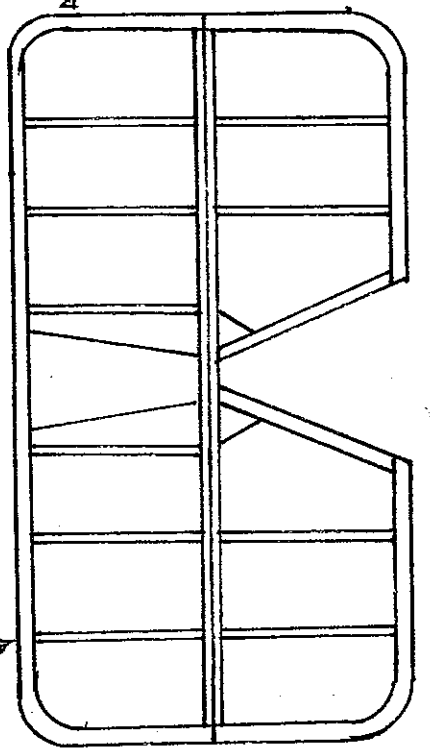


dihedral



extend spars

laminated tips



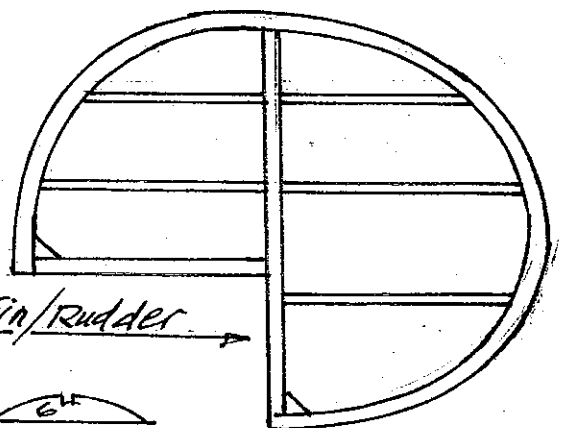
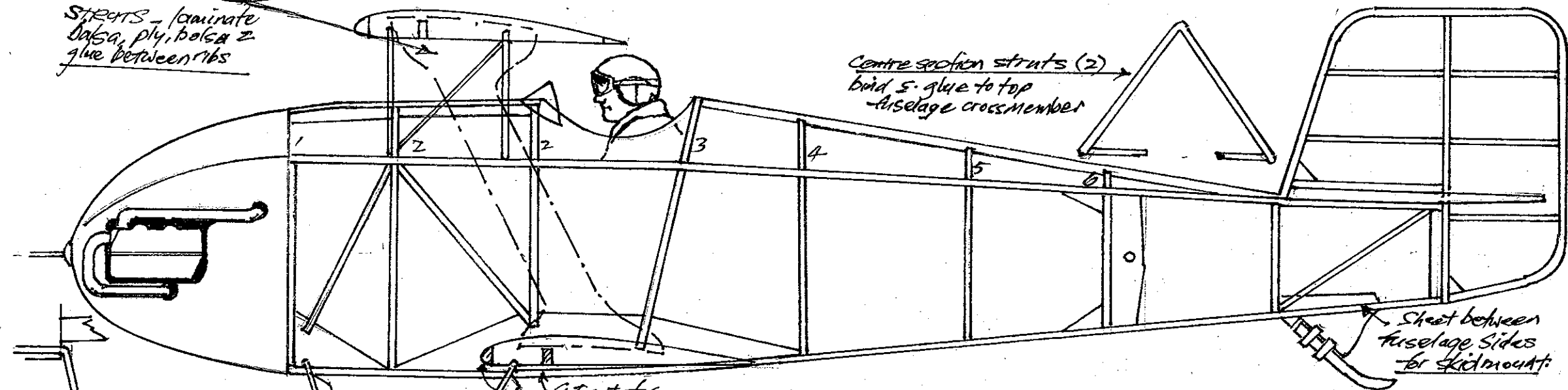
SPARS - laminate balsa, ply, balsa & glue between ribs

Centre section struts (2) build & glue to top fuselage crossmember

laminated outline

Sheet between fuselage sides for skid mount

cut out for spars



Alternative Fin/Rudder

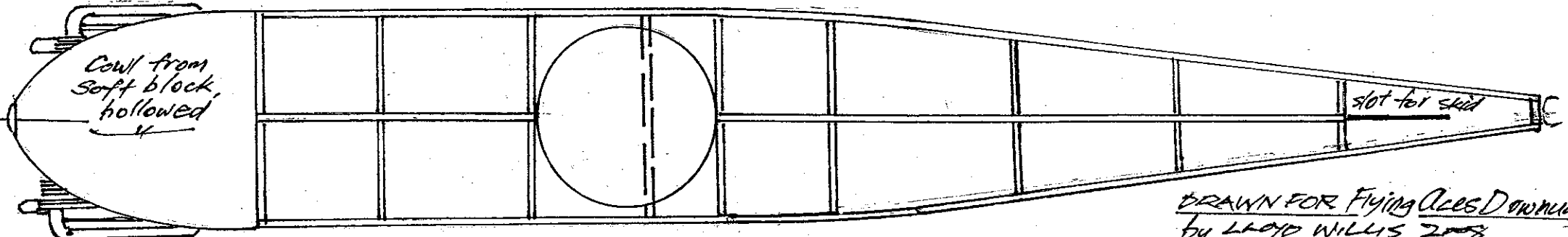


Cowl from soft block, hollowed

slot for skid

STAAKEN

Flitzer



DRAWN FOR Flying Aces Downunder by LLOYD WILLIS 2008