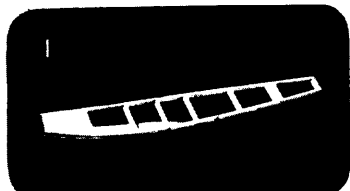
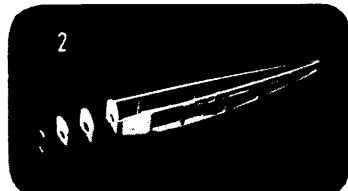


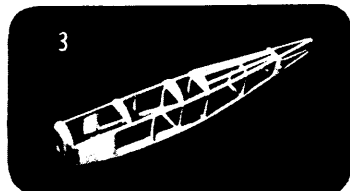
TO BUILD IT ~ FOLLOW THESE STEPS



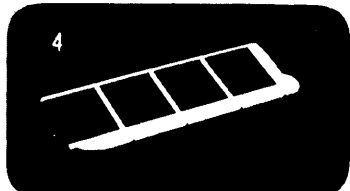
1 BUILD THE FUSELAGE SIDES ON THE SHADED LAYOUT BELOW. PUT WAX PAPER OVER THE PLAN FIRST TO KEEP THE GLUE FROM STICKING TO IT. USE STRAIGHT PINS TO HOLD THE STRIPS.



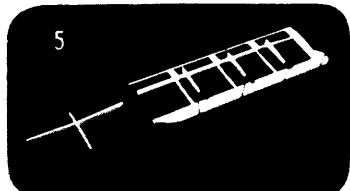
2 WHEN THE SIDES ARE MADE, GLUE FORMERS F4 AND F13 WHERE THEY BELONG BETWEEN THE TWO SIDES. NOW CEMENT BOTH BACK ENDS TOGETHER.



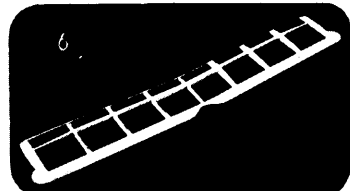
3 WHILE THAT IS DRYING, CUT THE CROSS-BRACES YOU WILL NEED - 1 OF EACH (2 FOR F5). NOW CEMENT THESE WHERE THEY BELONG WITH ALL THE F PARTS---LOOK AT THE SIDE VIEW.



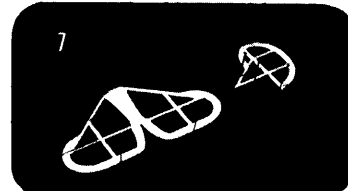
4 BUILD THE LEFT AND RIGHT WINGS ON THE LAYOUT; PUT WAX PAPER OVER IT FIRST. PIN DOWN THE LEADING AND TRAILING EDGES, W2L AND W2R. NOW GLUE IN WING TIPS W1L AND W1R---THEN ALL THE BASE STRIPS.



5 NOW YOU CEMENT ALL THE FRONT RIBS AGAINST THE BASE STRIPS. NEXT, CEMENT THE SPARS AGAINST THE RIBS. THE LAST THING YOU DO IS CEMENT ALL THE BACK RIBS. BUILD THE TOP AND BOTTOM WINGS THIS WAY.



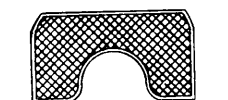
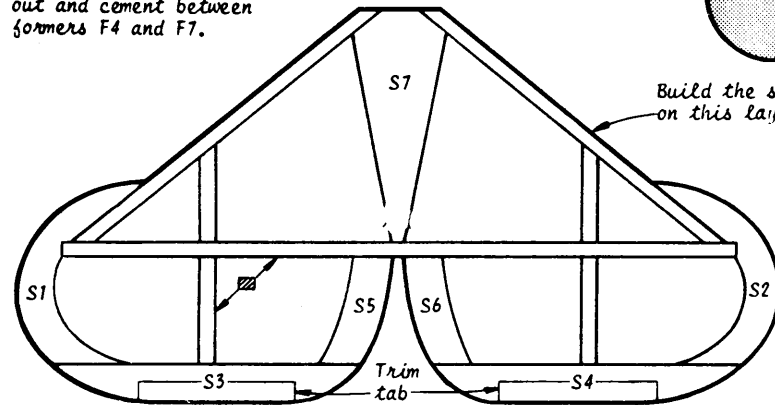
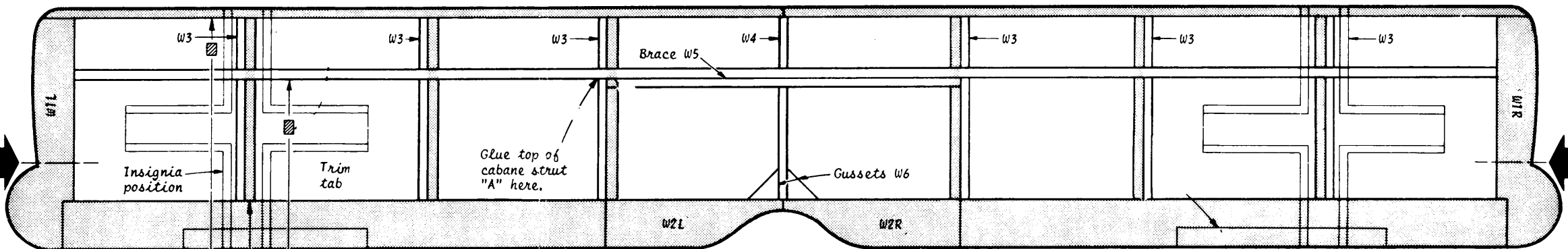
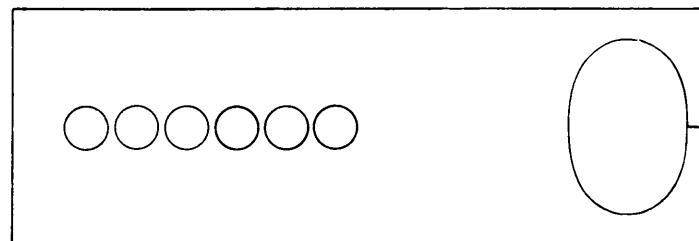
6 CEMENT DIHEDRAL BRACE W5 TO CENTER RIB W4 OVER LAYOUT. WHEN THIS IS DRY, JOIN THE RIGHT AND LEFT WING PANELS BY GLUING THE CENTER RIB AND DIHEDRAL BRACE IN THE MIDDLE. ADD GUSSETS W6



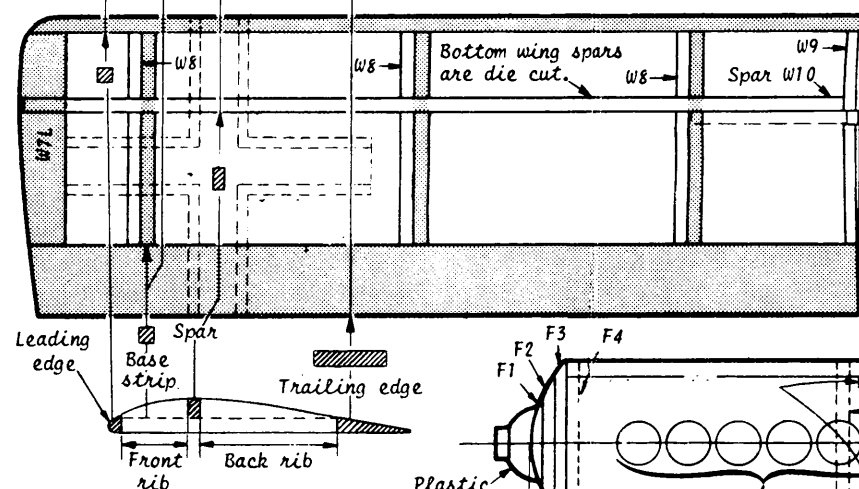
7 BUILD THE STABILIZER AND RUDDER OVER THE PLAN AS YOU DID THE WING AND FUSELAGE SIDES. ALL OF YOUR AIRPLANE'S FRAMEWORK MUST BE SANDPAPERED A LITTLE BEFORE COVERING IT WITH TISSUE.



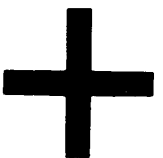
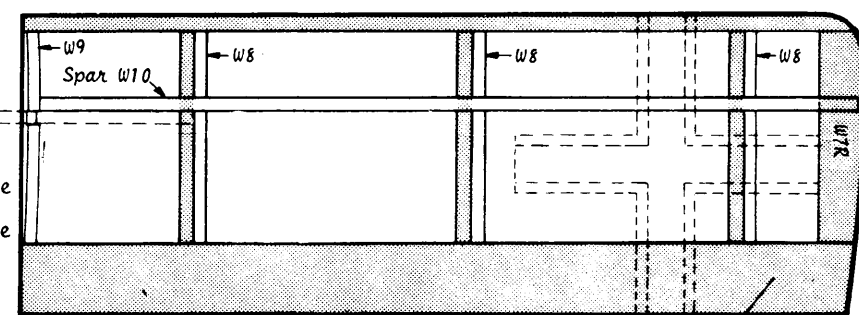
8 COVER THE RUDDER, STABILIZER, FUSELAGE AND WING WITH TISSUE BEFORE YOU GLUE THESE TOGETHER. USE CLEAR DOPE FOR STICKING THE TISSUE AND COVER ONLY A FEW INCHES AT A TIME. IT DRIES FAST.



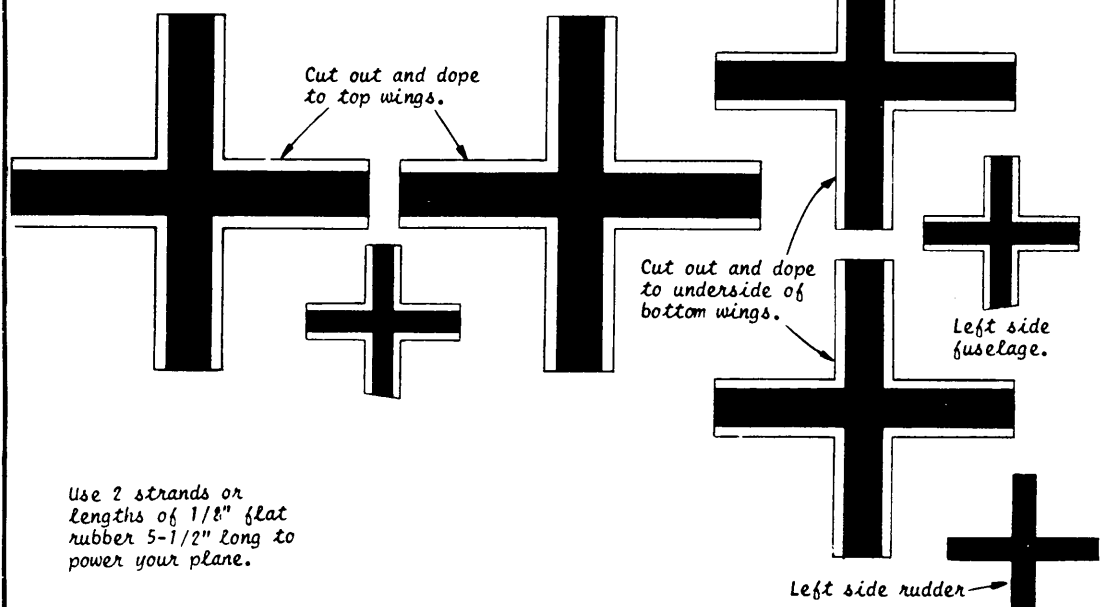
Cut out and glue to painted nose block.



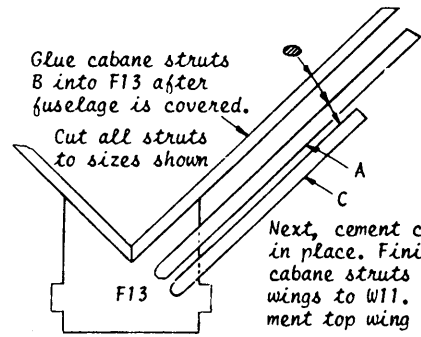
Glue in W11 after fuselage is covered. When dry, glue bottom wings to it.



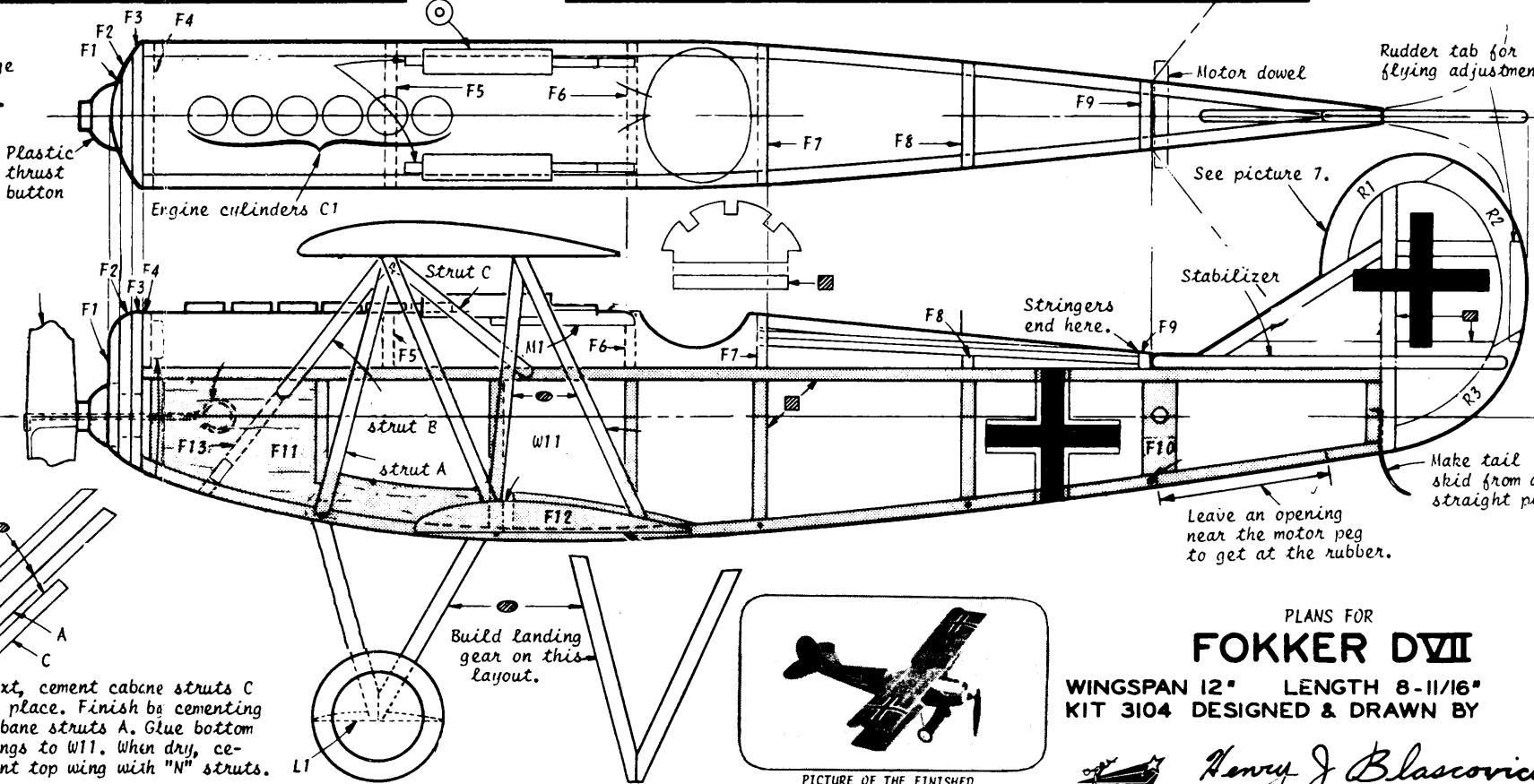
Cut out and dope to right side of rudder.



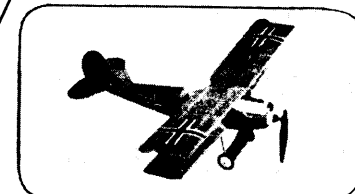
Use 2 strands or lengths of 1/8" flat rubber 5-1/2" long to power your plane.



Next, cement cabane struts C in place. Finish by cementing cabane struts A. Glue bottom wings to W11. When dry, cement top wing with "N" struts.



Build landing gear on this layout.



PICTURE OF THE FINISHED FOKKER D.VII MODEL

PLANS FOR  
**FOKKER D.VII**  
WINGSPAN 12" LENGTH 8-11/16"  
KIT 3104 DESIGNED & DRAWN BY

*Henry J. Blascovich*