

lamelováno 4 = b.08

b.3 = 3 = 3 × 5

b.1

b.15

b.3

negativ 1 mm

b.2 = 7 = 25 × 10

b.1

pouze zespo

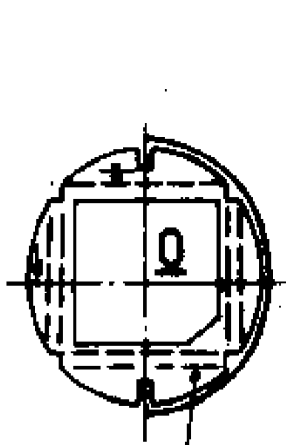
lamelováno 3 = b.08

b.08 = 15

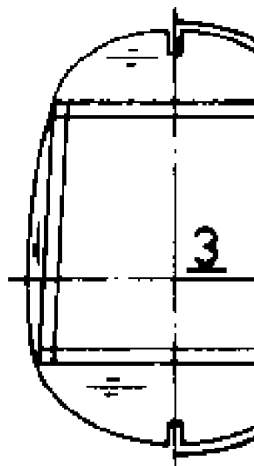
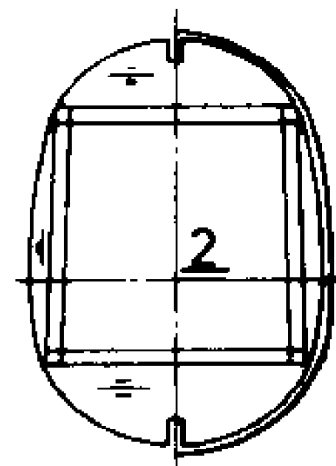
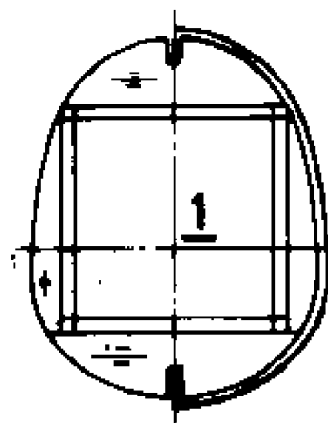
b.1

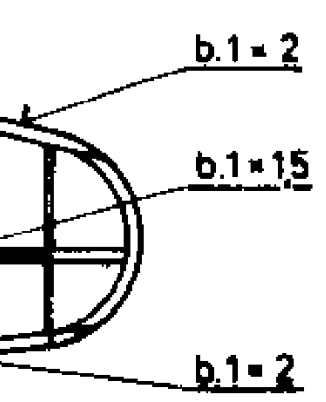
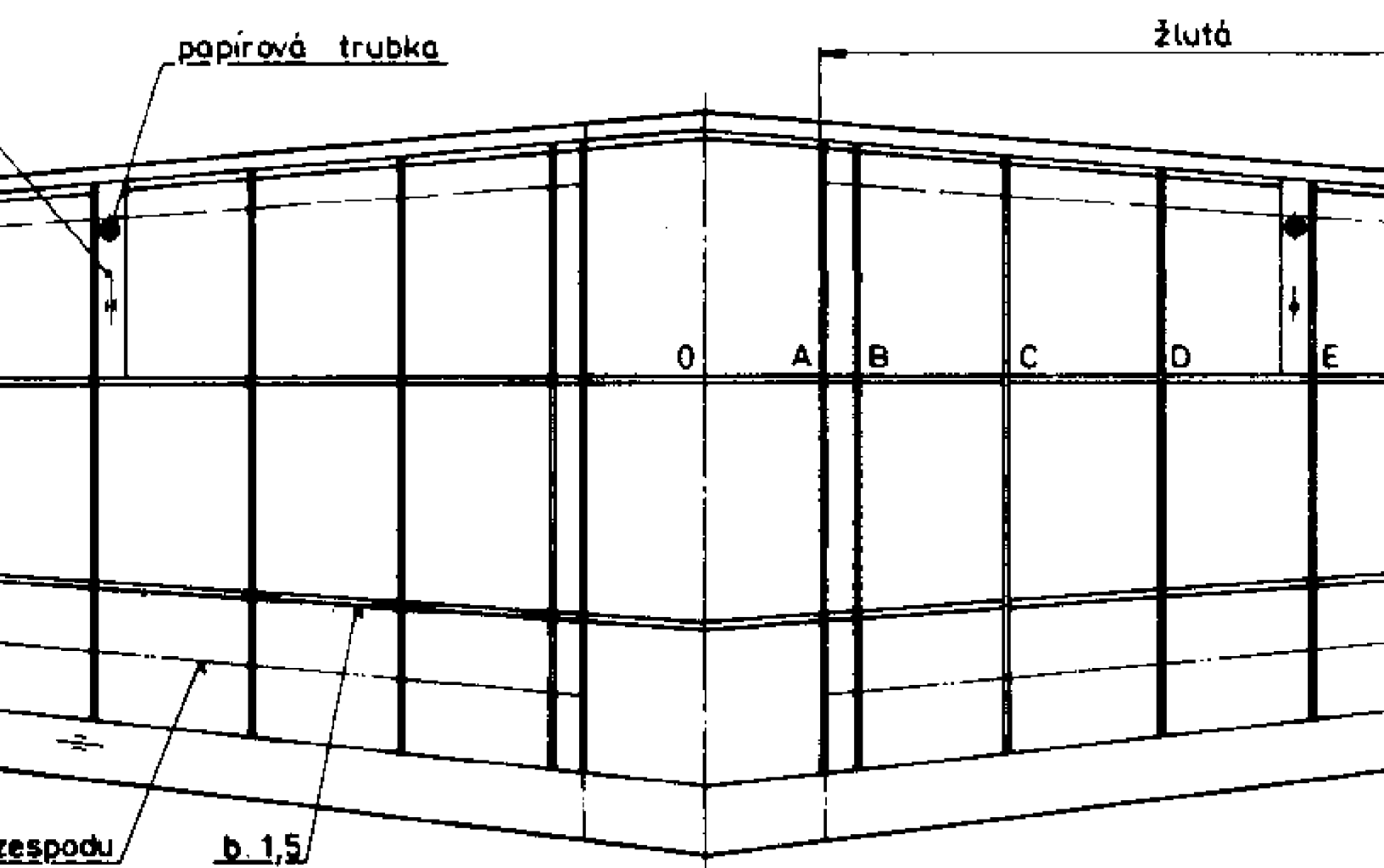
b.1 × 2

b.1 × 1

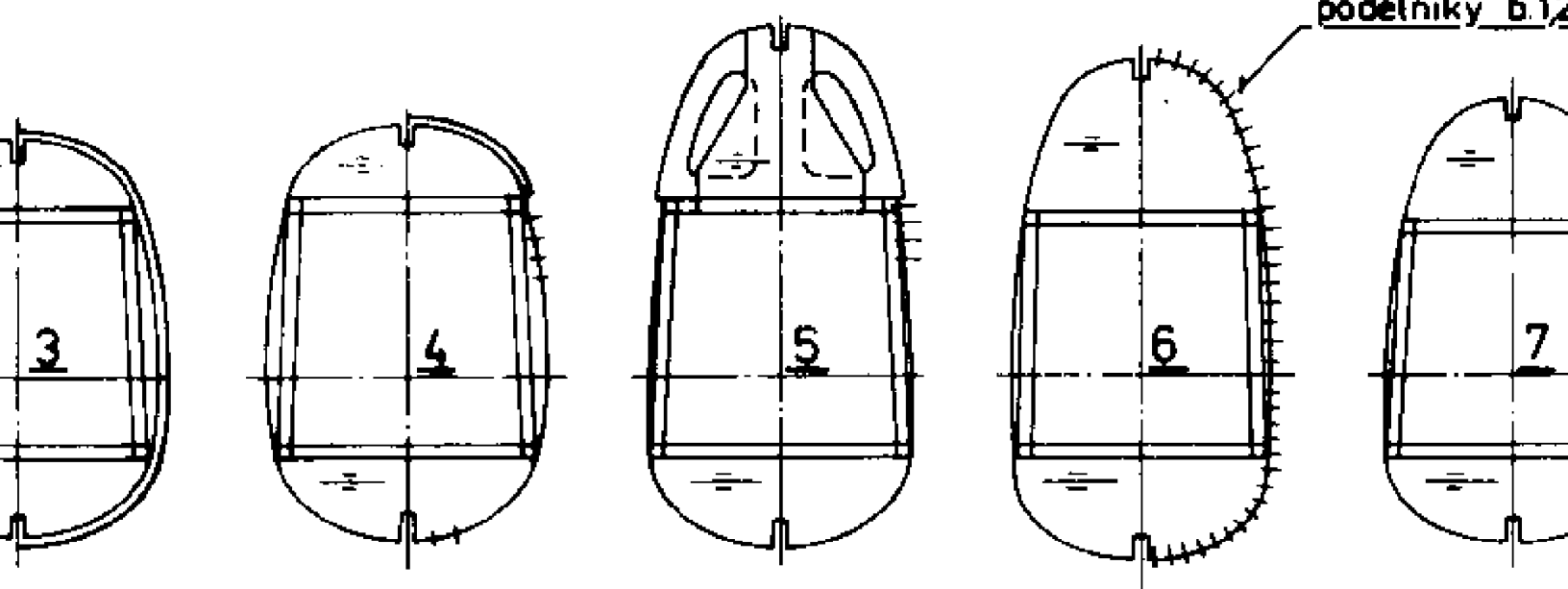
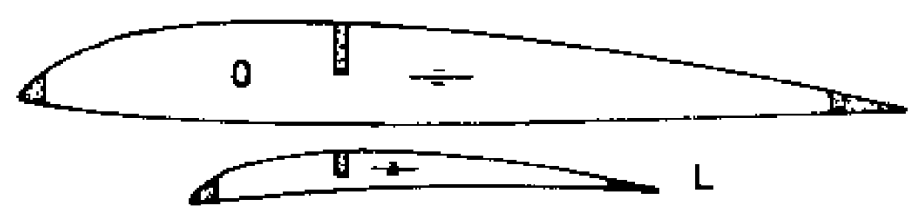


b.3 = b.2

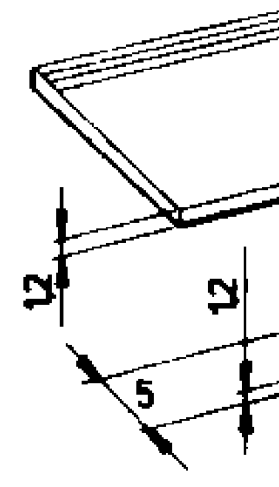
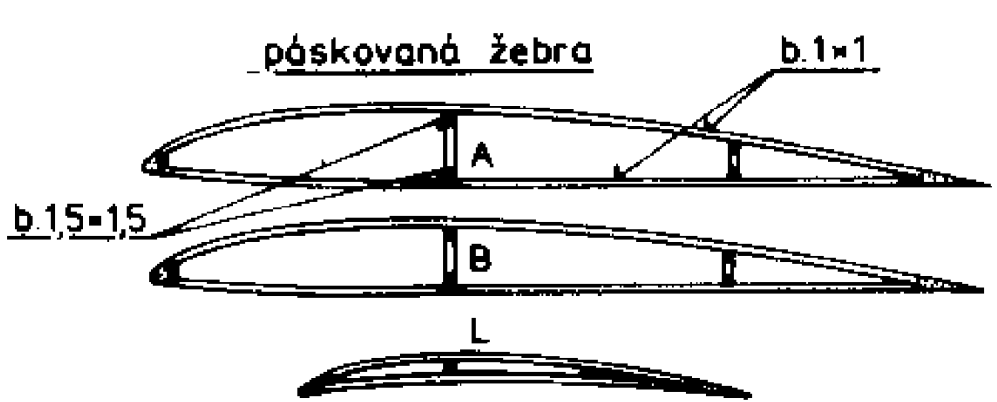
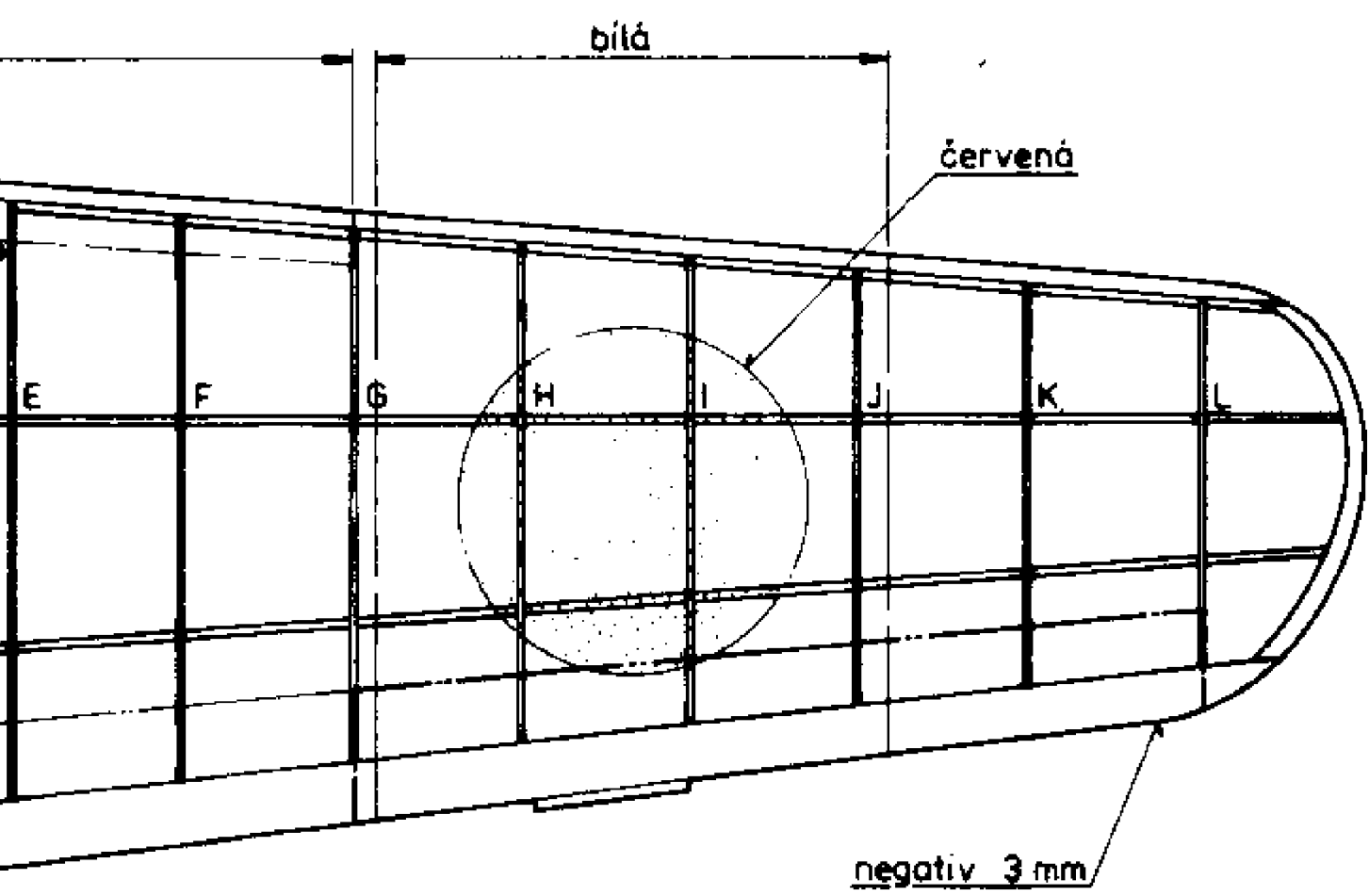




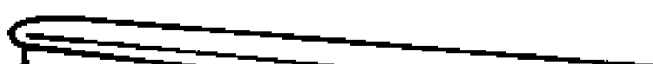
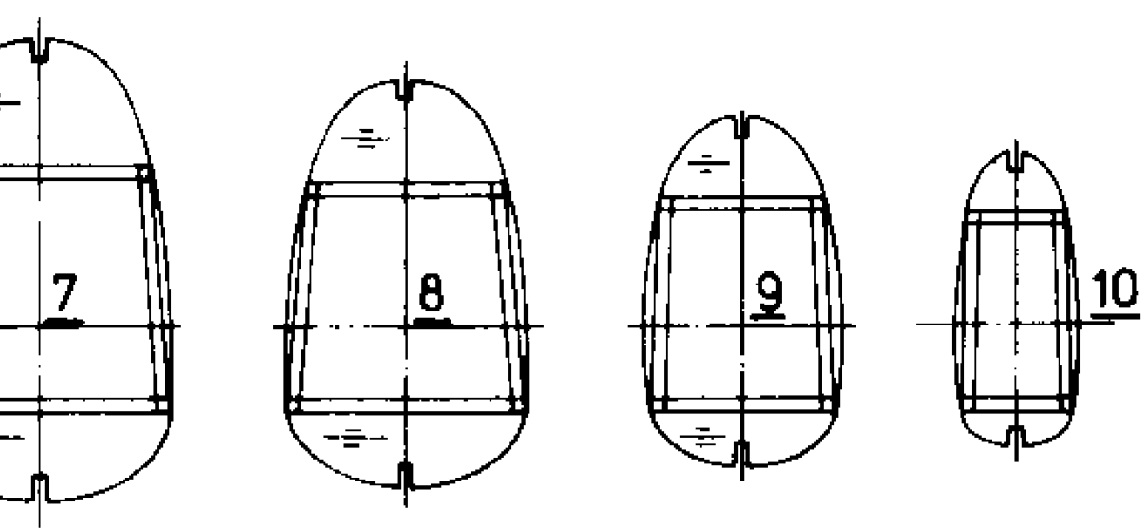
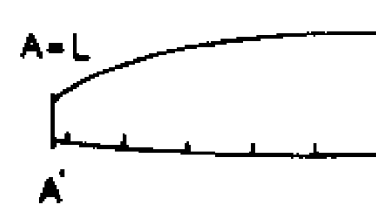
žebra křídla klasické konstrukce b.1



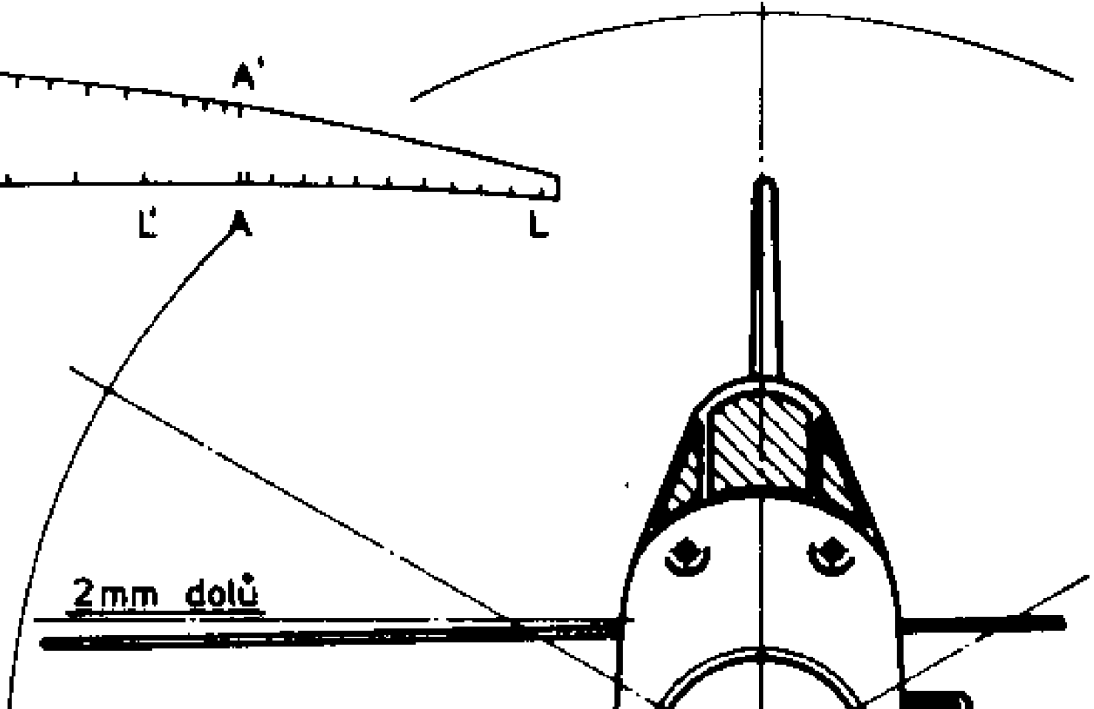
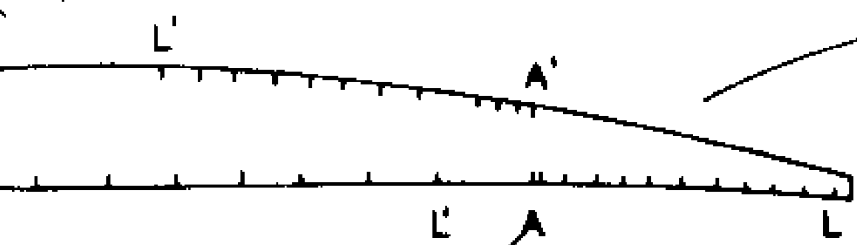
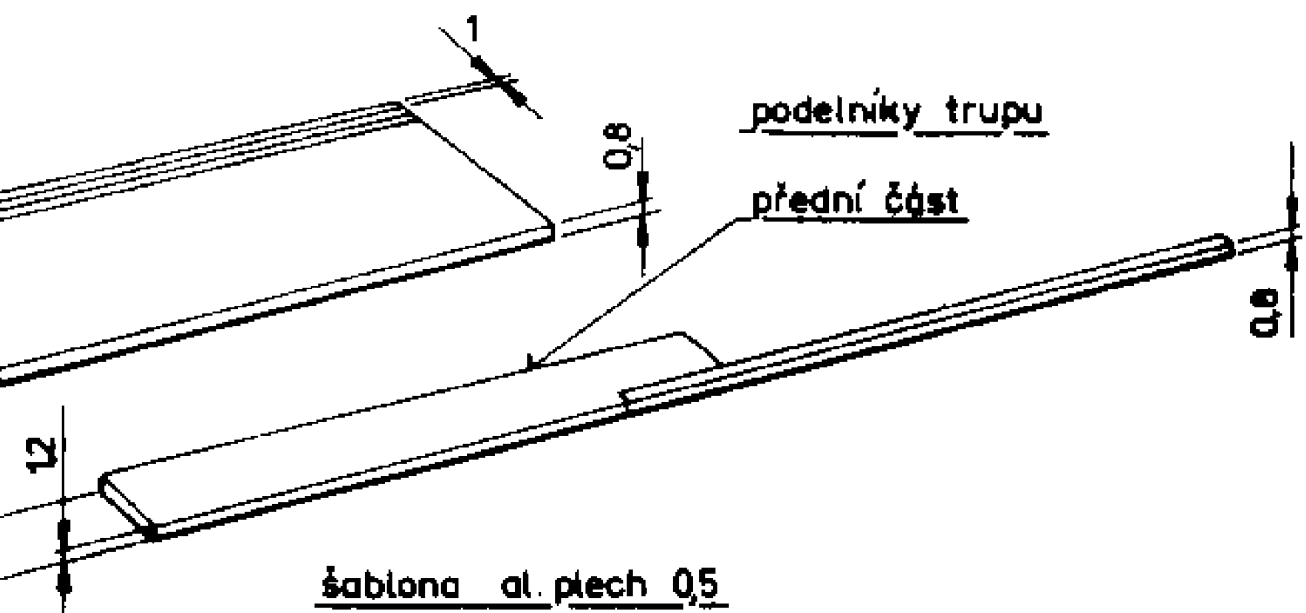
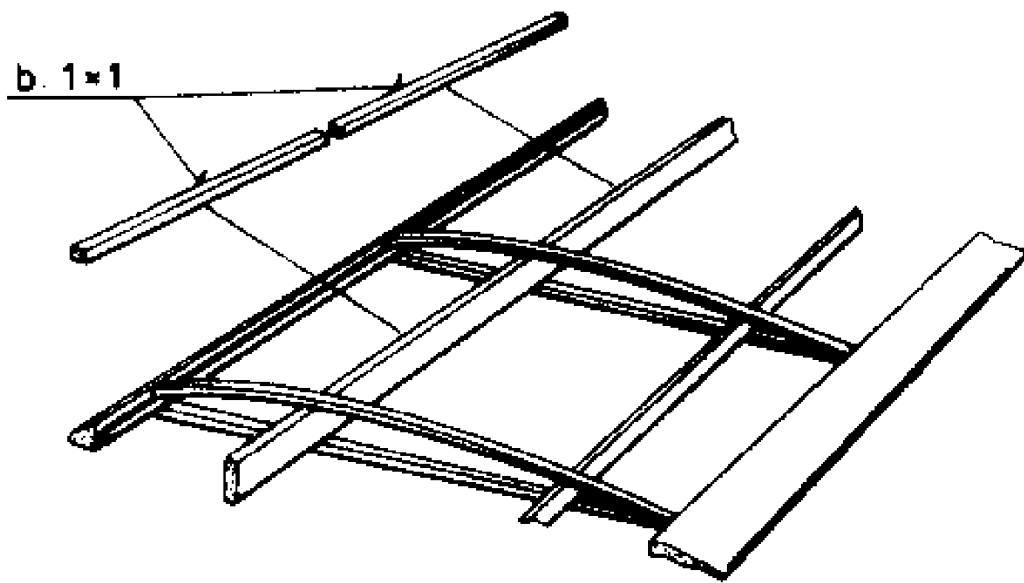
1 tvarové polořepožky 1 až 10 b.1



b.12x1 > 0,8x1 - 76 až 90 ks po obvodě



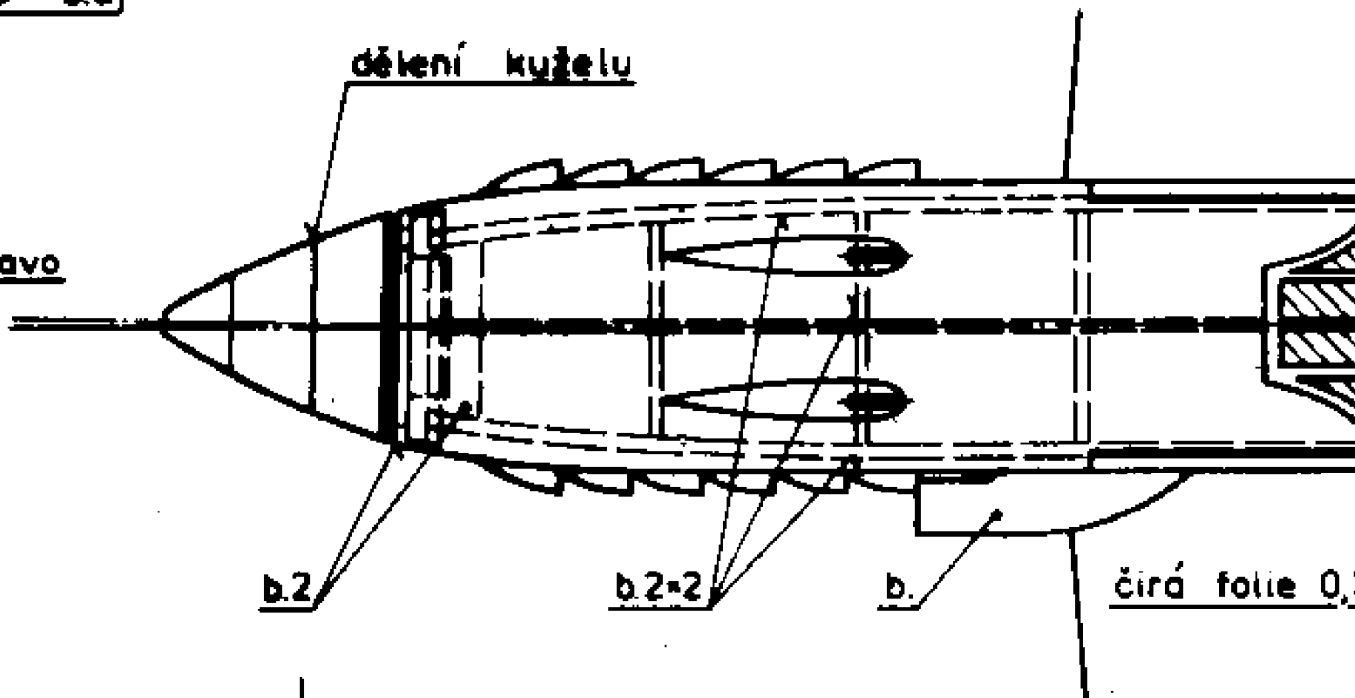
křídlo s páskovanými žebry



b.3 • b.2

dělení kuželu

1° vpravo



b.2

b.2=2

b.

čirá folie 0,1

tuhy potah přední části trupu  
lamelován z pásků balsy 1=5

b. glovo

b. bambus

p. př.1

černá

b.15=35

b.2=2

3° dolů

pružina

př.1

b.2

b.2=2

papírová trubka

b.15=35

bambus ø2

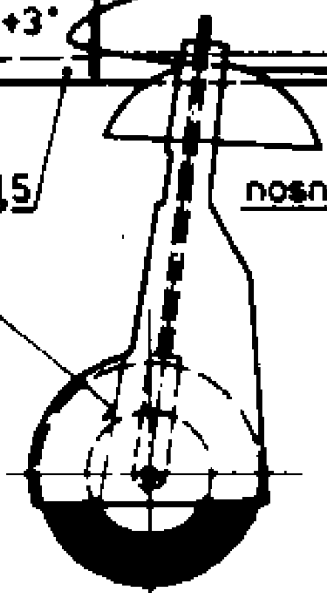
žlutá

nosník

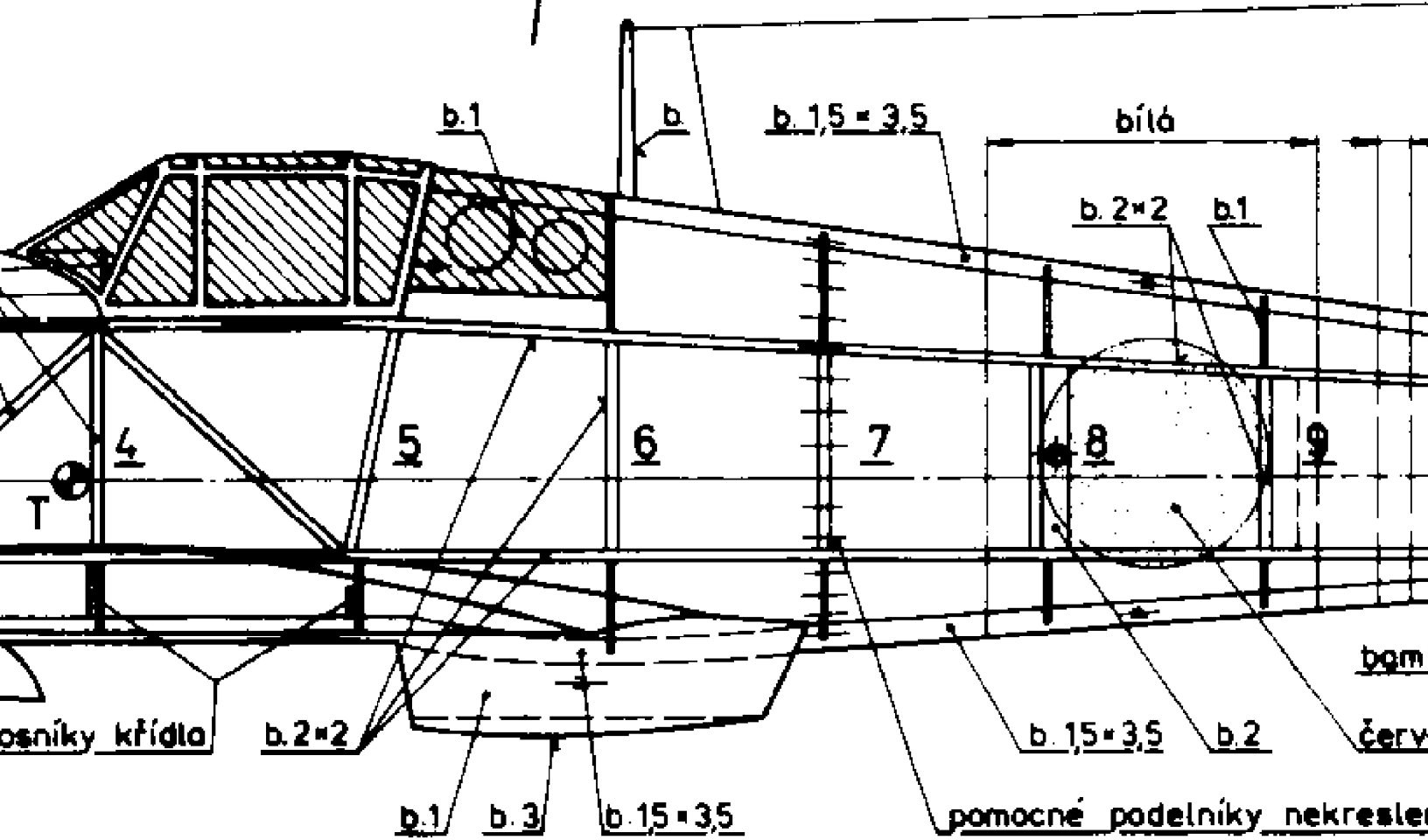
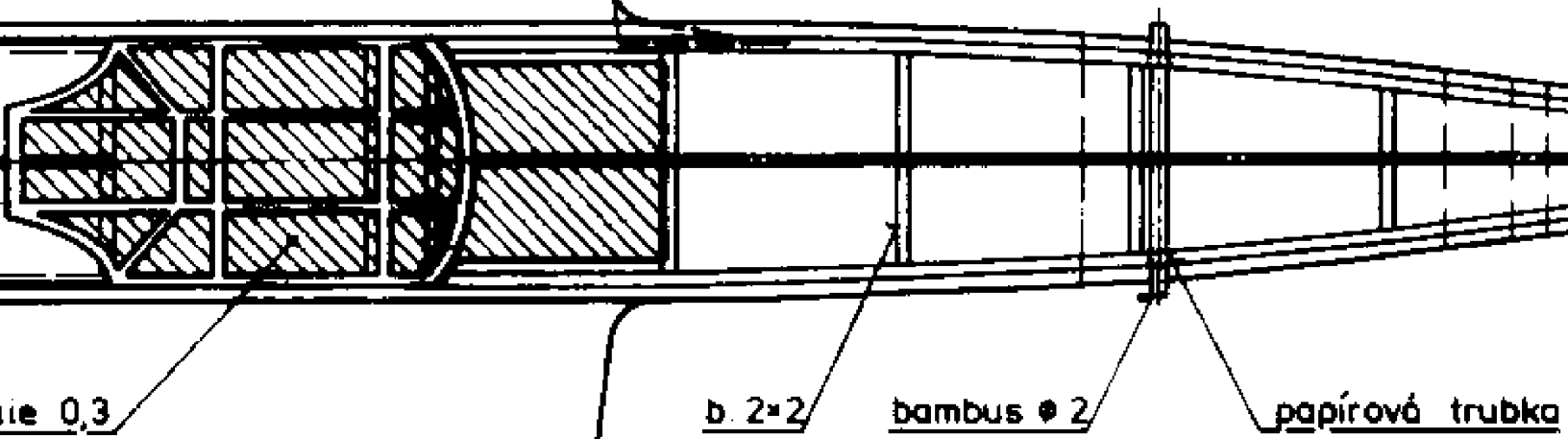
vtule třílistá ø 210,

stoupání 320

b.3

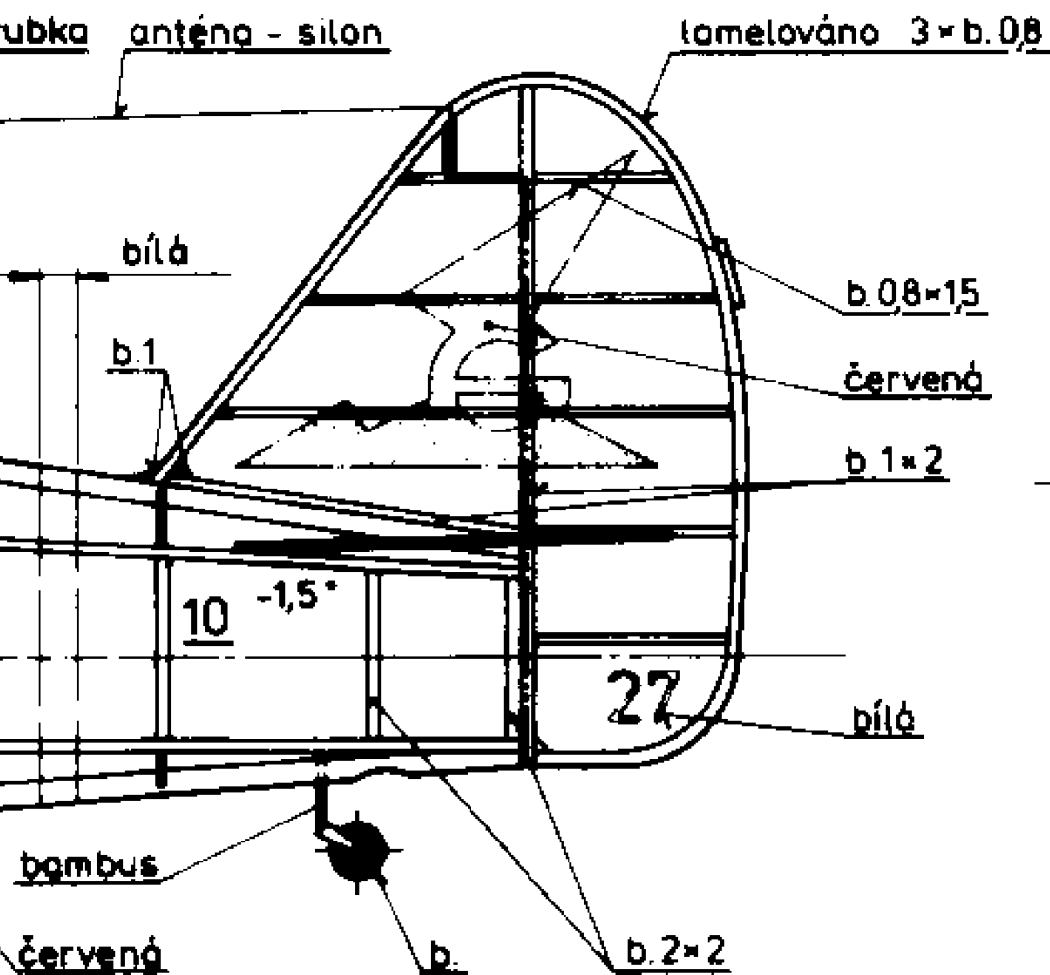
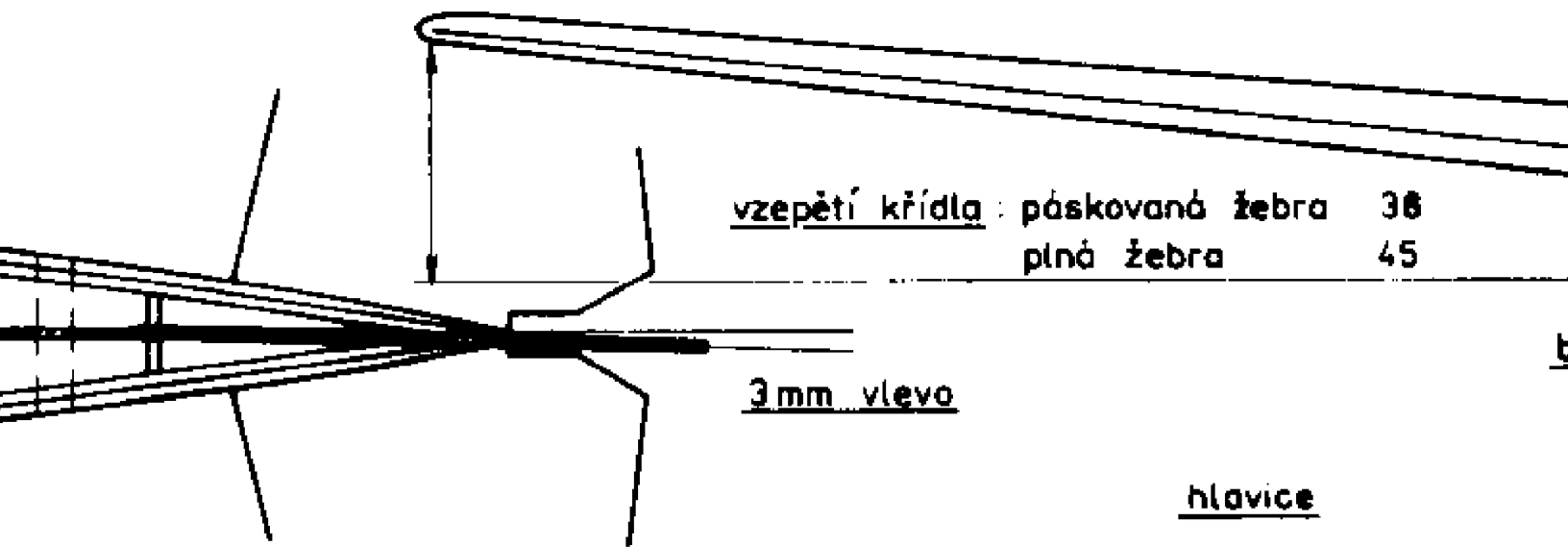


tvarové polopřepážky 1 až 10 b.1

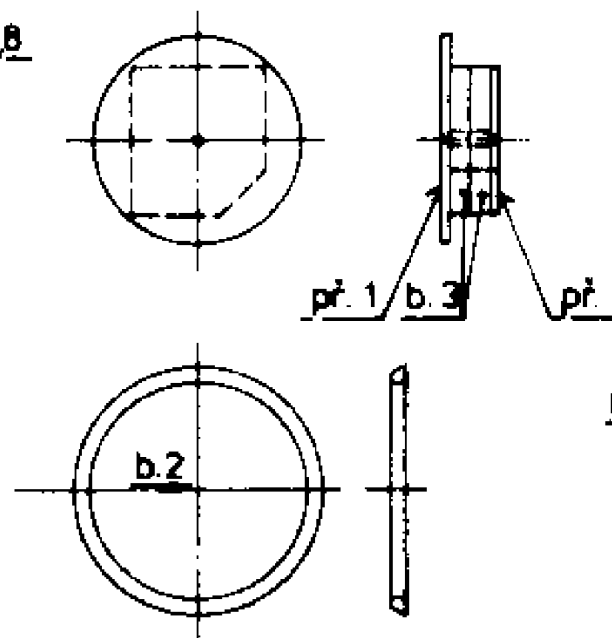


základ trupu - příhradová konstrukce  
sestavená z listů 2x2

ZBARVENÍ (na výkř  
celý letoun šedostří  
nastříkáno množstv  
hnědočervené, před



hlavice



resleny

MAKETA NA O

KAWASAKI

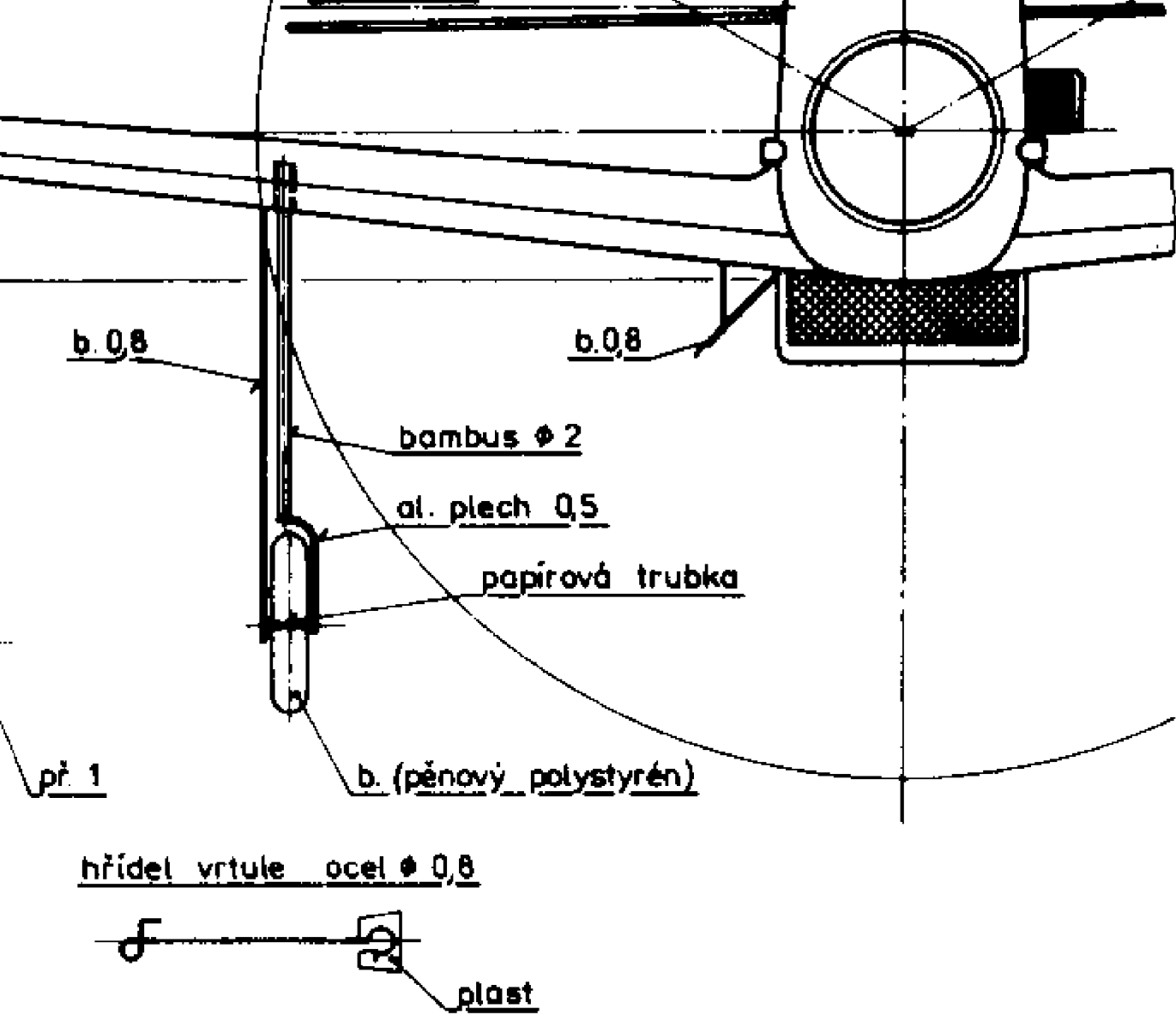
konstrukce :

rozpětí : 60

pohon : FA

výkrese Ki-61-II 56 sentai, Itami, Osaka 1945)

dostříbrný, na horních a bočních plochách  
požství tmavě zelených skvrn, vrtule a kužel  
před kabinou černý pruh proti oslnění



NA GUMOVÝ POHON KATEGORIE M min

SAKI Ki-61-II HIEN (TONY)

e: ing. Lubomír KOUTNÝ, BRNO

600 mm

délka: 470 mm

FAI-TAN 4 ks 3×1 délka 600 mm