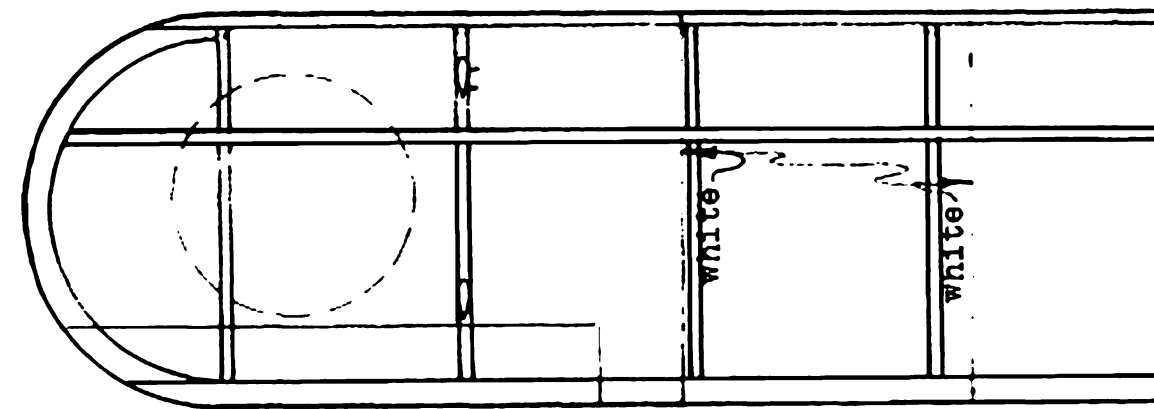


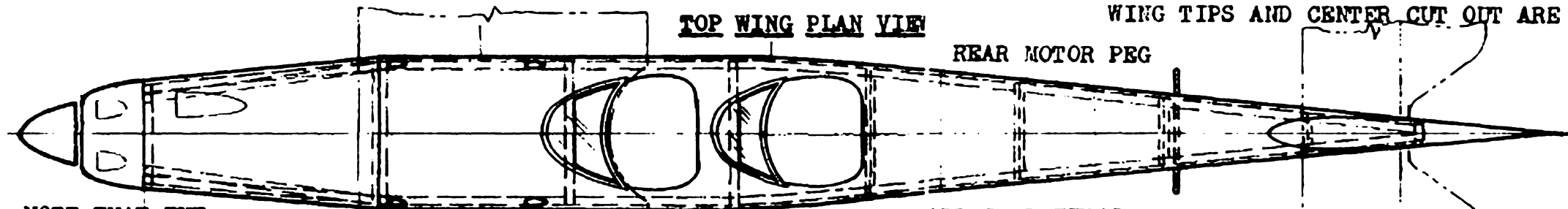
TOP WING PLAN VIEW

WING TIPS AND CENTER CUT OUT ARE MADE FROM 1/16TH SHEET.



BOTTOM WINGS PLAN VIEW

WING LEADING EDGES ARE 1/16 BY 1/8 SET ON EDGE. TRAILING EDGES ARE THE SAME SET FLAT. SPARS ARE 1/16TH SQUARE.



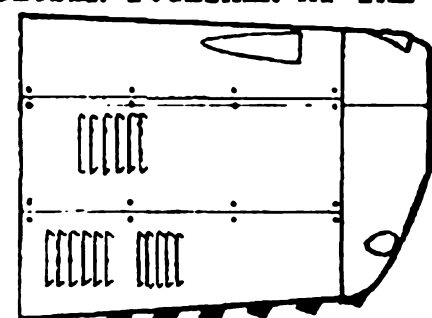
FUSELAGE PLAN VIEW

NOTE THAT THE BOTTOM LONGERONS ARE CLOSER TOGETHER AT THE NOSE.

ALL STRUCTURAL MEMBERS ARE Balsa EXCEPT THE CABANE STRUTS, THE WING STRUTS, AND THE LANDING GEAR STRUTS WHICH ARE MADE FROM MODEL RAILROAD BASSWOOD STICKS.

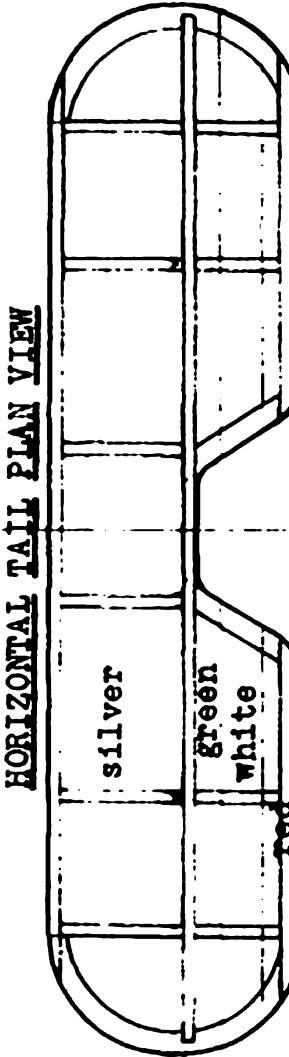
ALL Balsa IS 1/16TH THICK BY THE WIDTH SHOWN ON THE PLAN, OR IS CUT FROM 1/16TH SHEET Balsa, EXCEPT THE FUSELAGE TOP COVERING WHICH IS 1/32ND SHEET, AND THE NOSE WHICH IS CARVED FROM BLOCK Balsa.

COVER THE MODEL WITH LIGHTWEIGHT JAPANESE TISSUE.

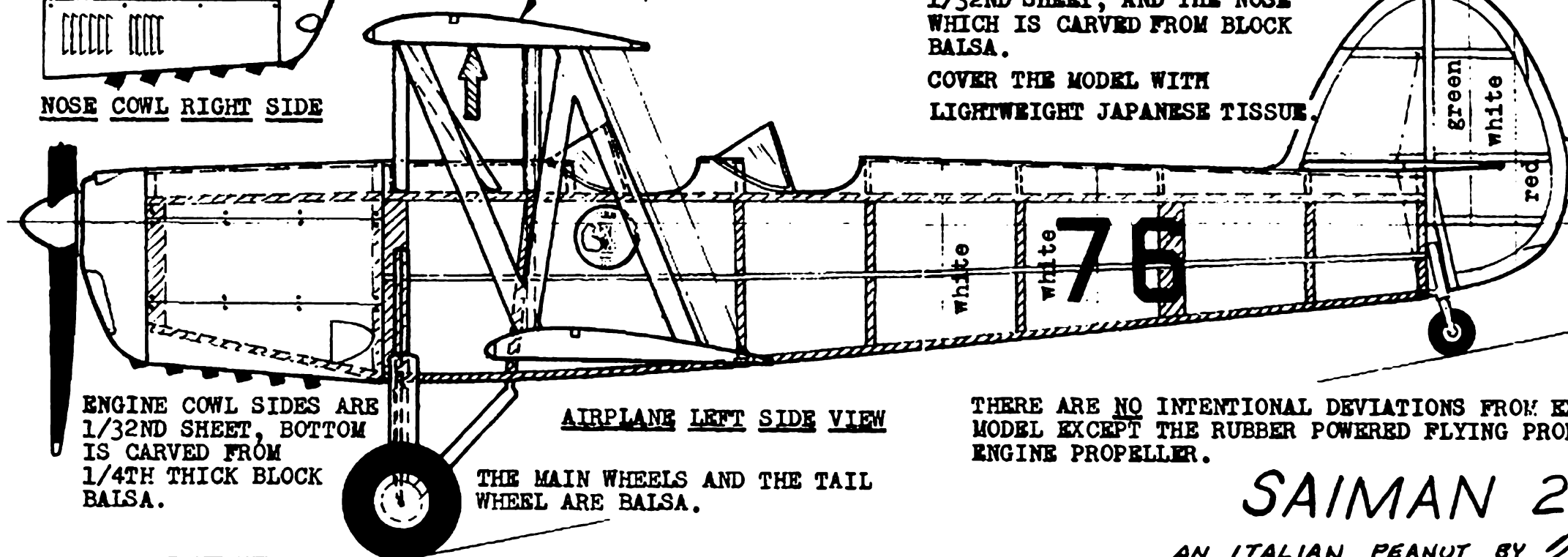


NOSE COWL RIGHT SIDE

ALL WING RIBS ARE IDENTICAL AS SHOWN BELOW.



HORIZONTAL TAIL PLAN VIEW



AIRPLANE LEFT SIDE VIEW

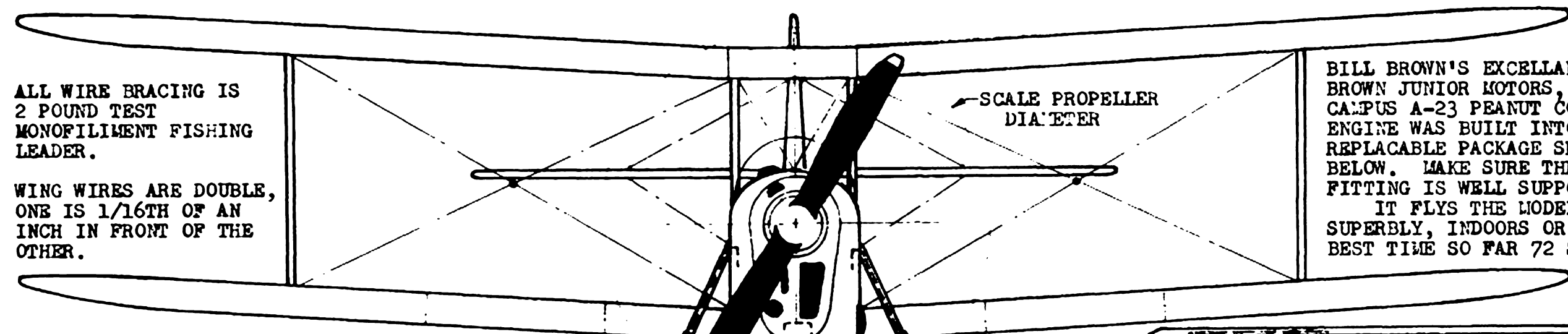
ENGINE COWL SIDES ARE 1/32ND SHEET, BOTTOM IS CARVED FROM 1/4TH THICK BLOCK Balsa.

THE MAIN WHEELS AND THE TAIL WHEEL ARE Balsa.

THERE ARE NO INTENTIONAL DEVIATIONS FROM EXACT SCALE ON THIS MODEL EXCEPT THE RUBBER POWERED FLYING PROPELLER AND THE CO-2 ENGINE PROPELLER.

SAIMAN 200

AN ITALIAN PEANUT BY *Walt Mooney* 12-23-81

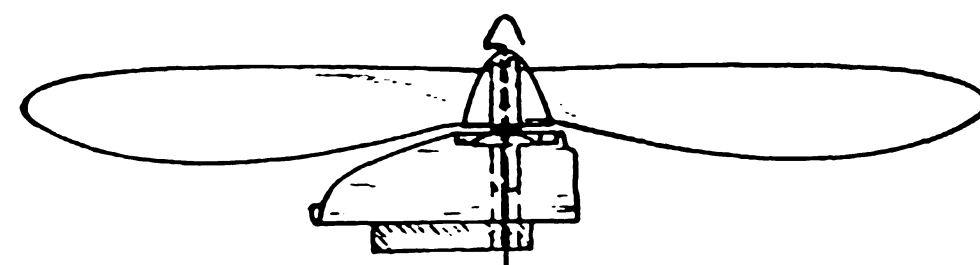


AIRPLANE FRONT VIEW

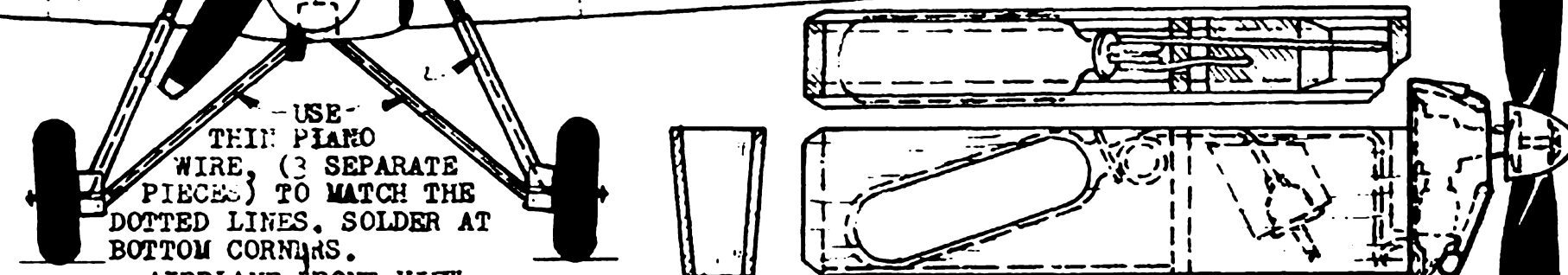
ALL WIRE BRACING IS 2 POUND TEST MONOFILAMENT FISHING LEADER.

WING WIRES ARE DOUBLE, ONE IS 1/16TH OF AN INCH IN FRONT OF THE OTHER.

BILL BROWN'S EXCELLANT BROWN JUNIOR MOTORS, INC. CAMPUS A-23 PEANUT CO-2 ENGINE WAS BUILT INTO THE REPLACABLE PACKAGE SHOWN BELOW. MAKE SURE THE FILLER FITTING IS WELL SUPPORTED. IT FLIES THE MODEL SUPERBLY, INDOORS OR OUT. BEST TIME SO FAR 72 SECS.



RUBBER POWERED NOSE DETAILS
THIN PLANO WIRE PROPELLER SHAFT PLASTIC COMMERCIAL PROPELLER AND THRUS BEARING.



CO-2 ENGINE INSTALLATION DETAILS

NOSE TO TAIL TOP FUSELAGE FORMER SHAPES CUT FROM SHEET Balsa 1/16TH SHEET FOR 1 THRU 5 OTHERS ARE 1/32ND SHEET

COLOR SCHEME (lower case letters) Airplane is overall silver with white bands on bottom wings and around aft fuselage. Tail surfaces have red, white, and green stripes. Insignia has black details on a white circle. Tires, numbers, and propeller blades are black.

SAIMAN 200

SHEET TWO BY *Walt Mooney* 12-23-81

SOLID Balsa NOSE BLOCK WITH 1/8TH THICK Balsa BACK PLUG TO FIT SNUGLY IN FRONT OF FUSELAGE.