

2" DIHEDRAL AT THIS POINT

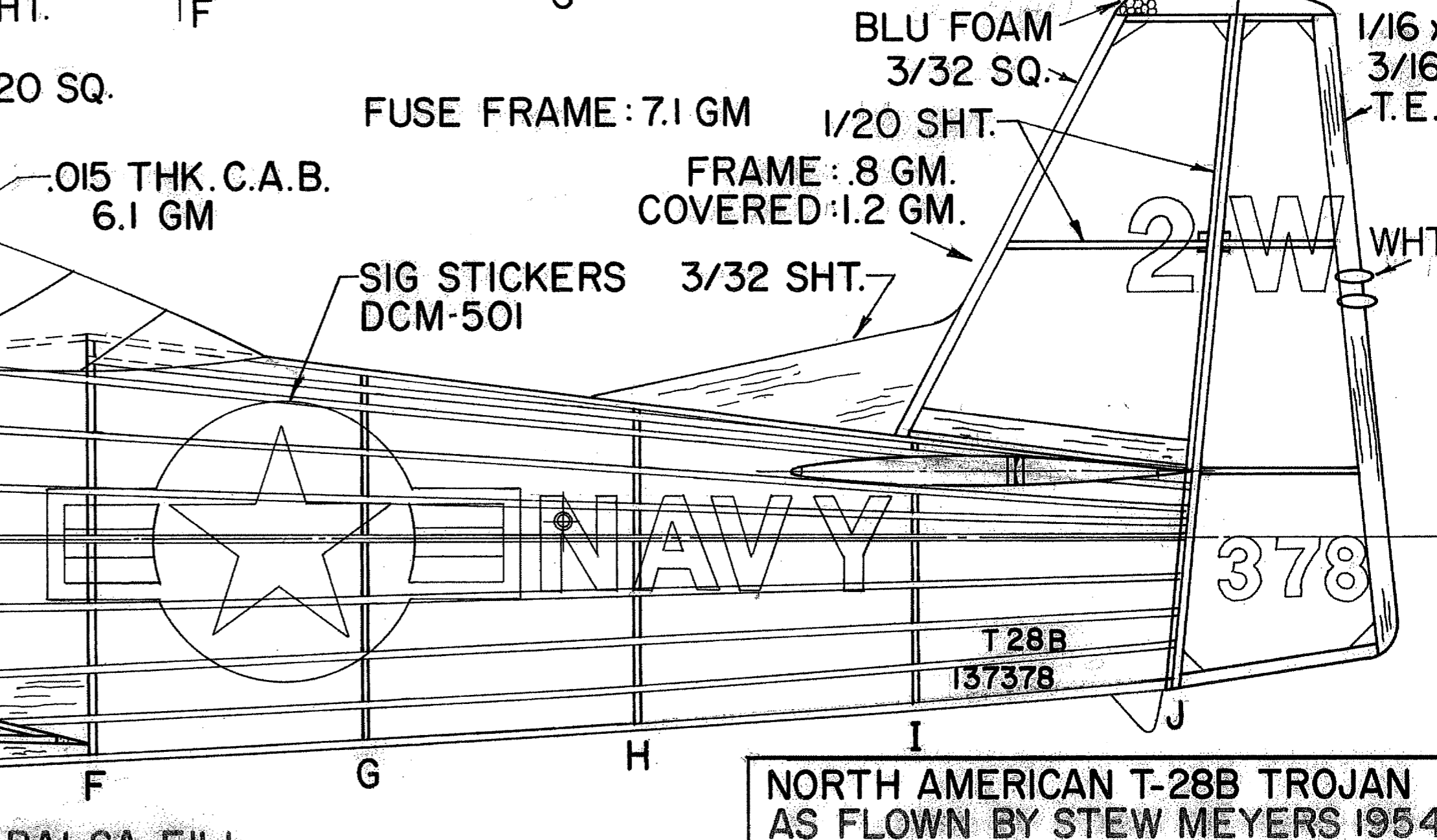
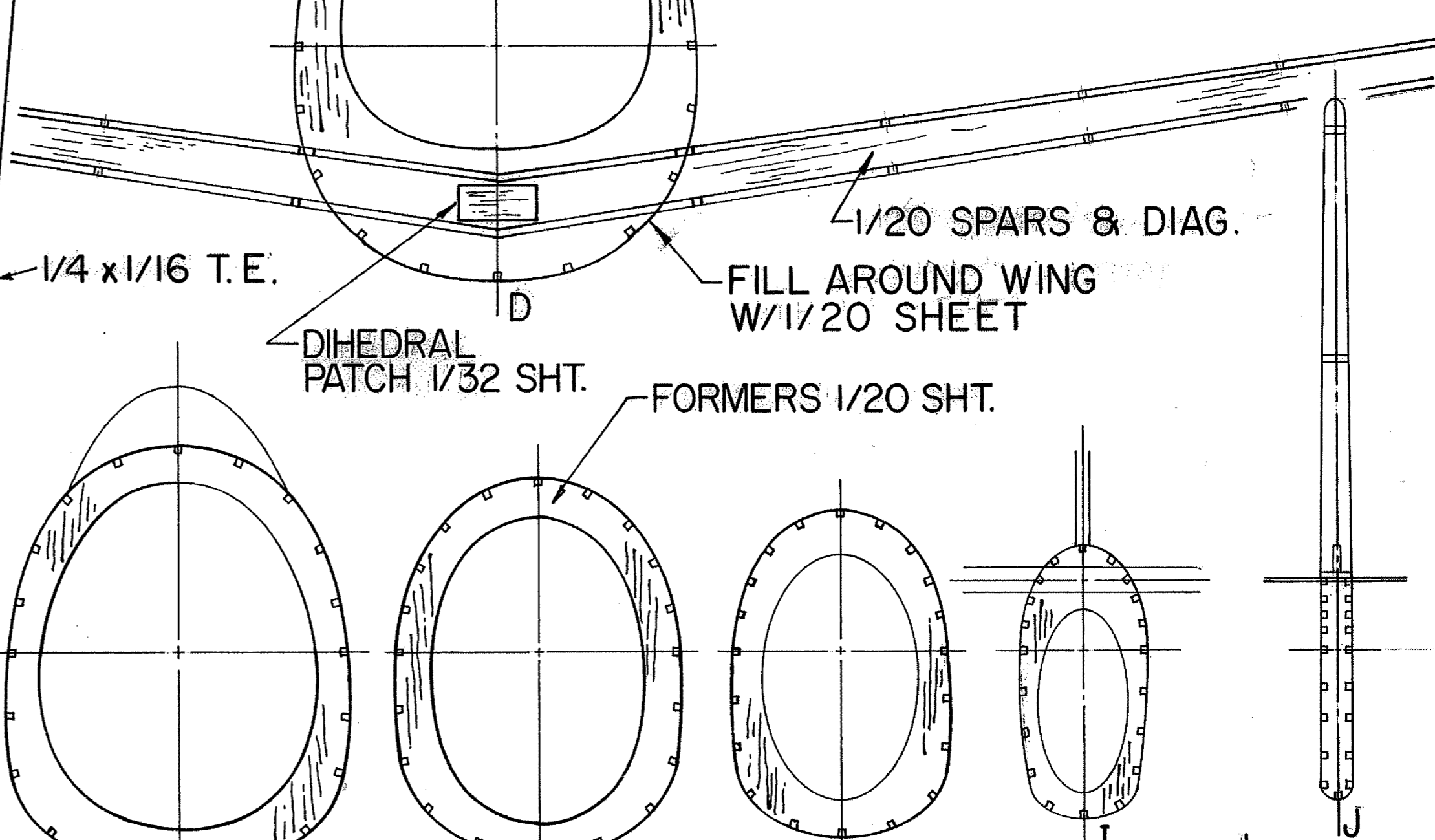
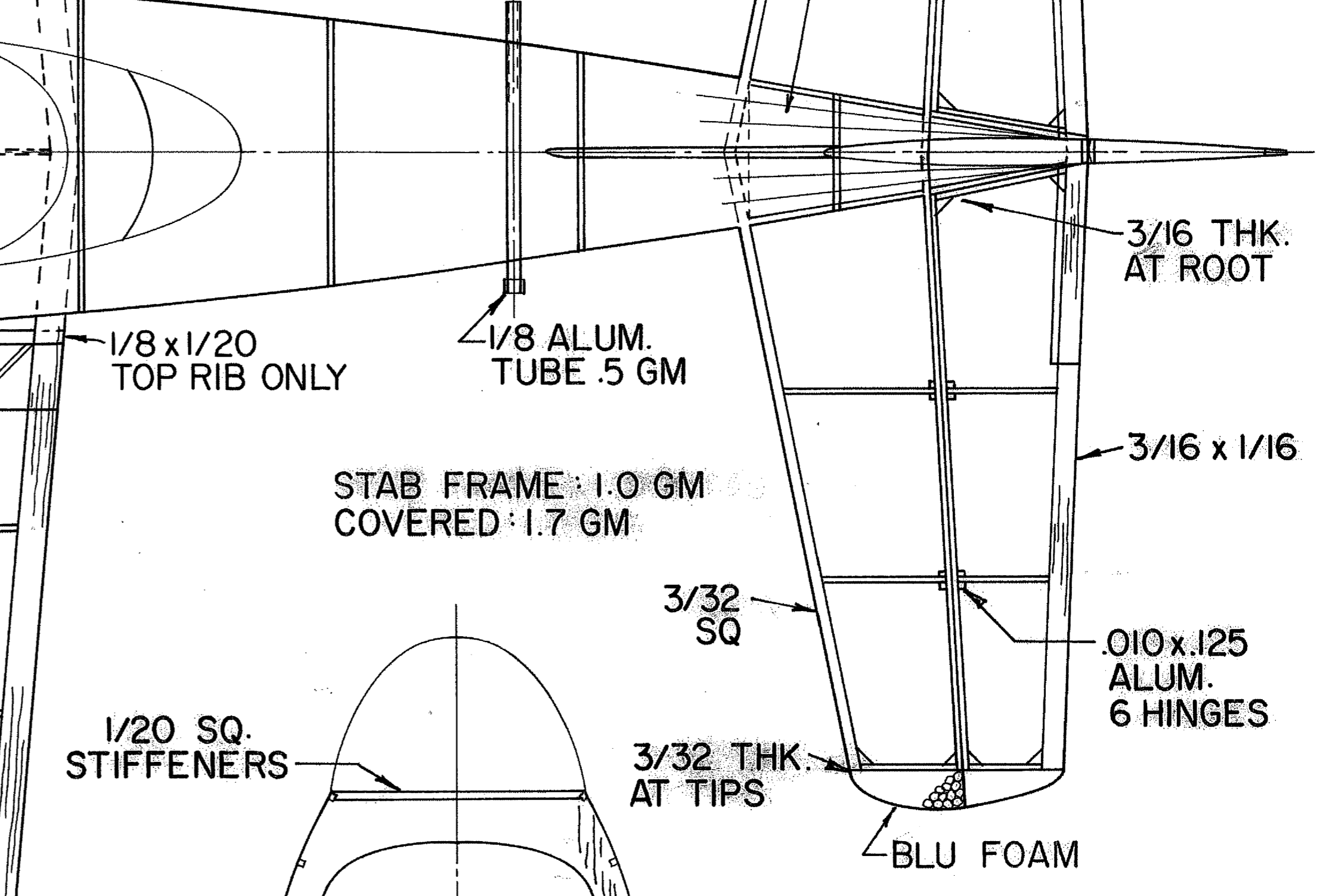
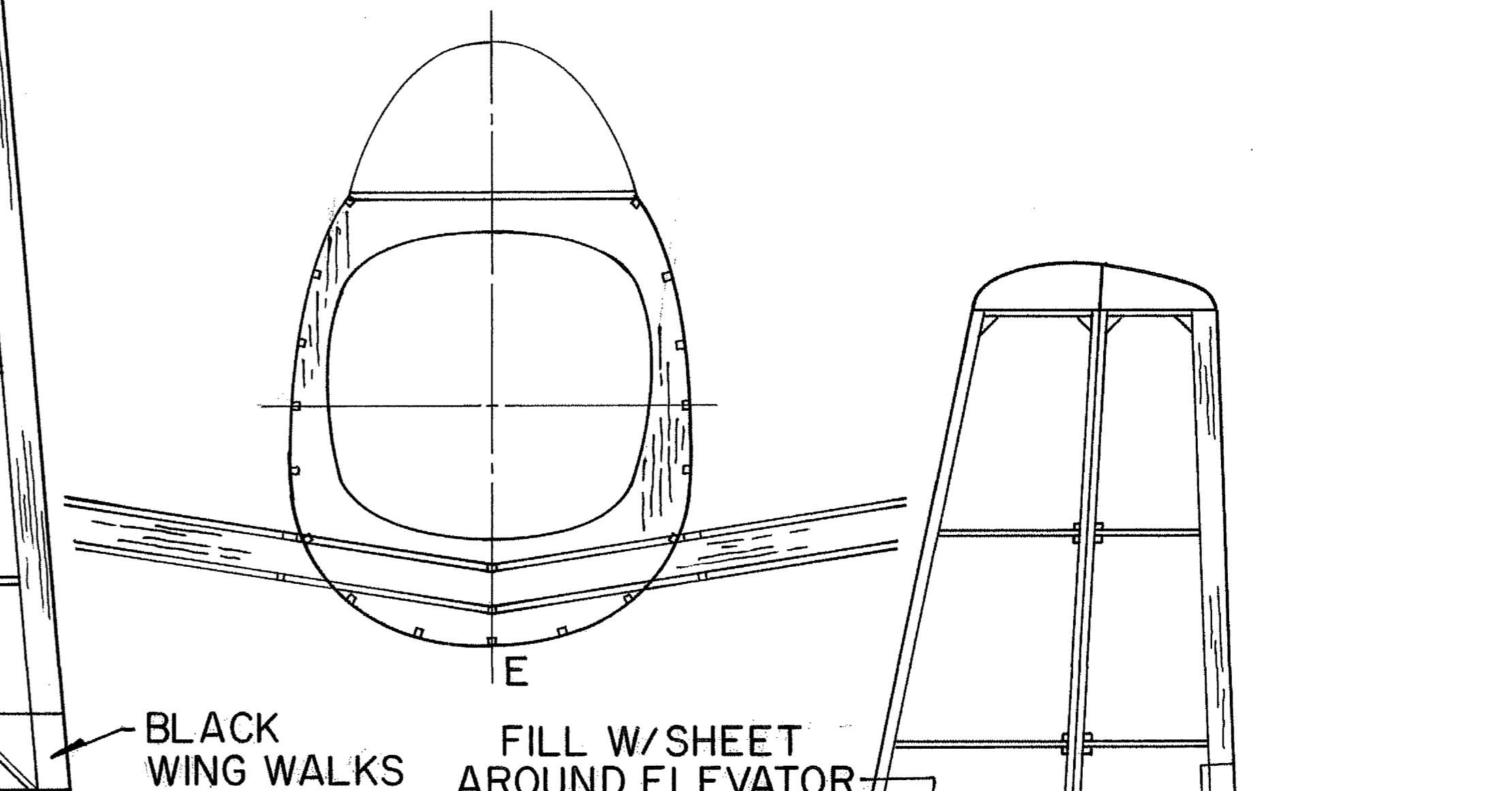
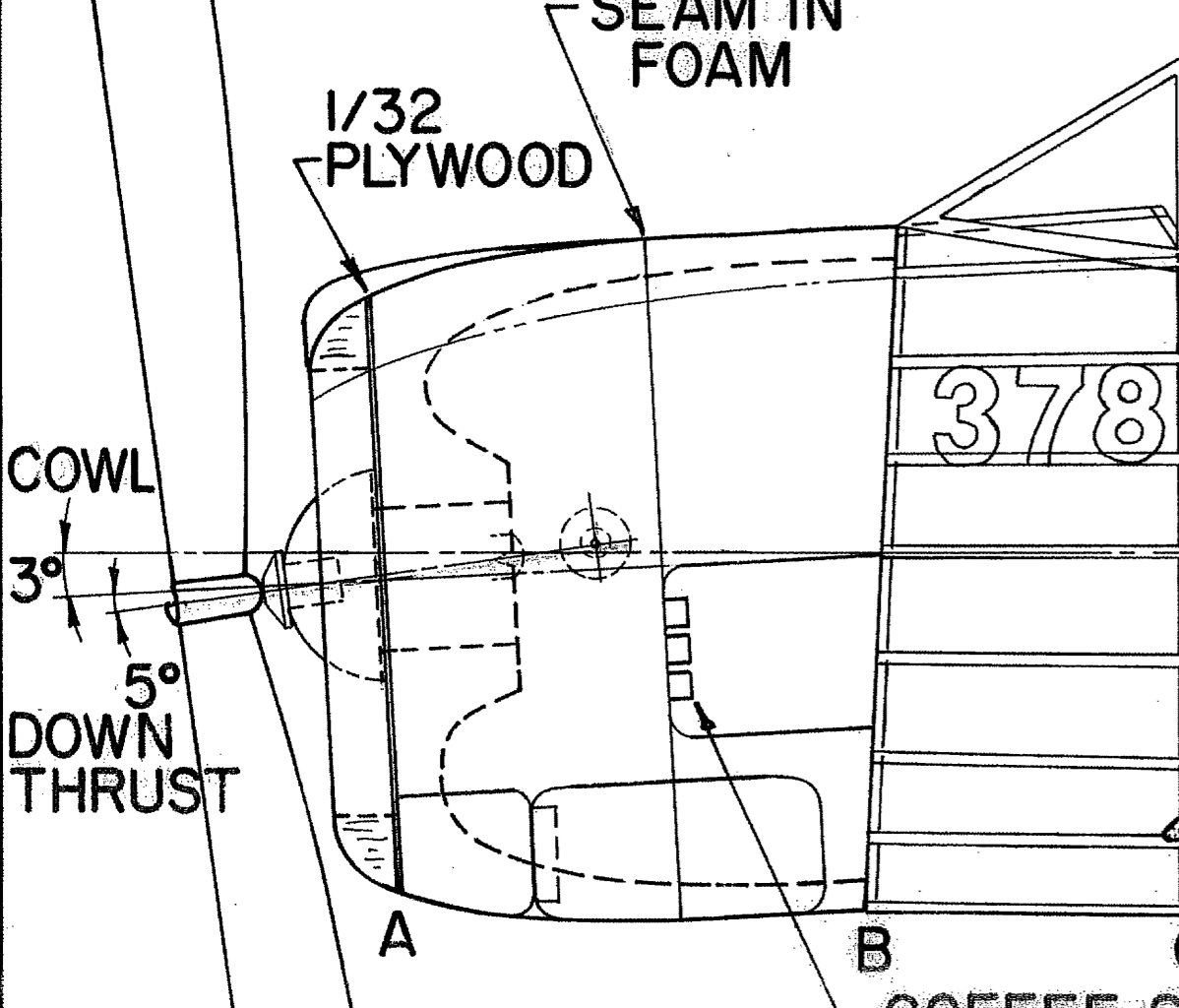
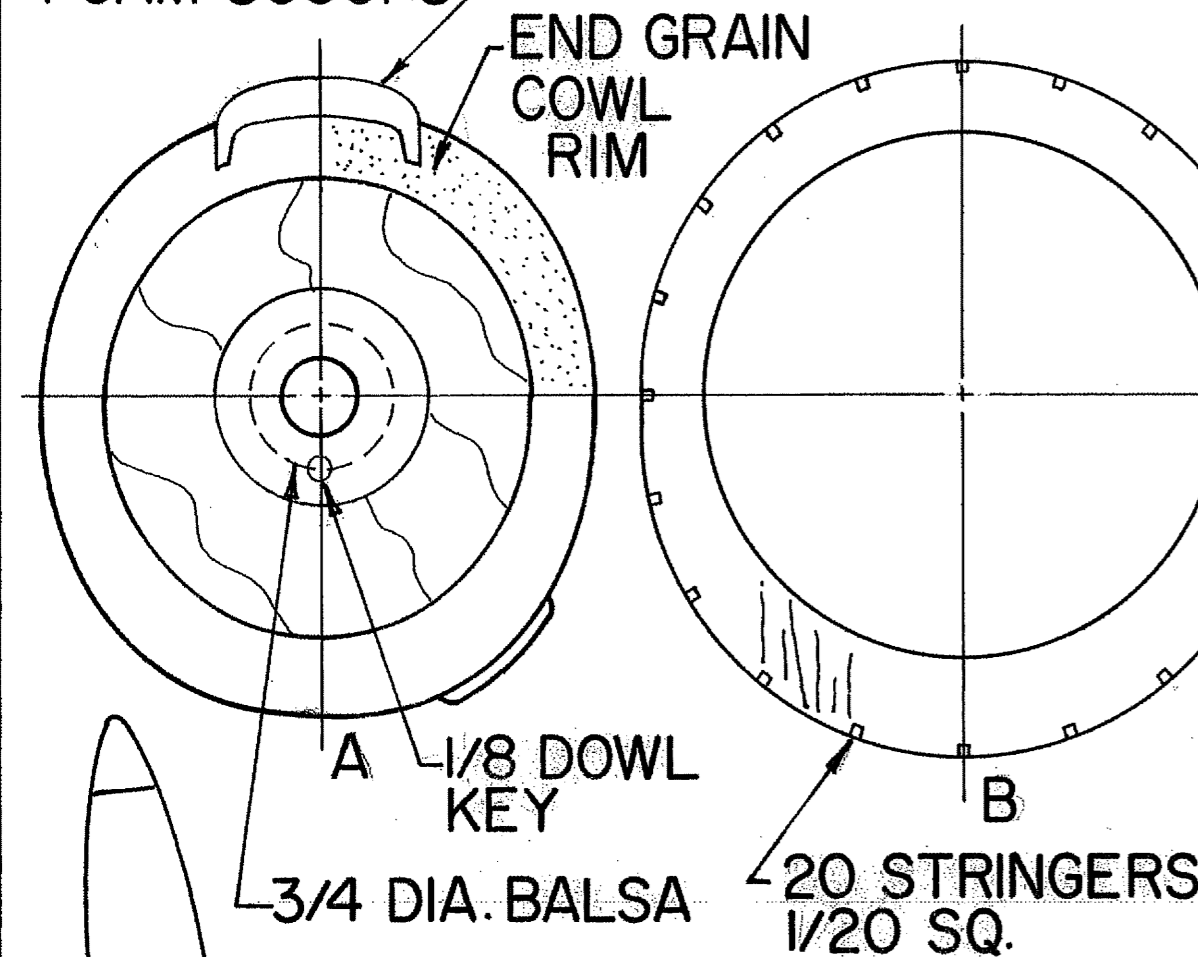
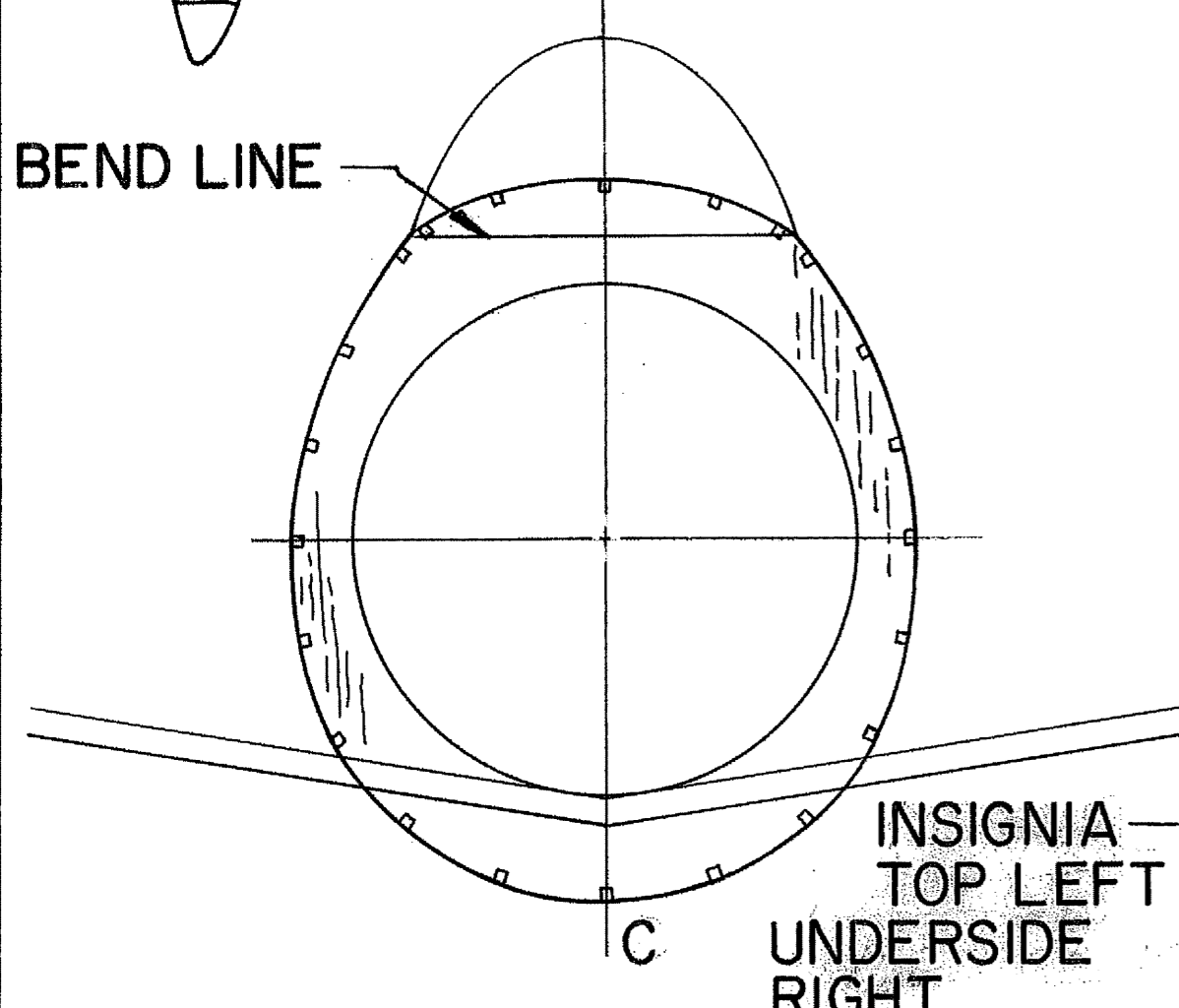
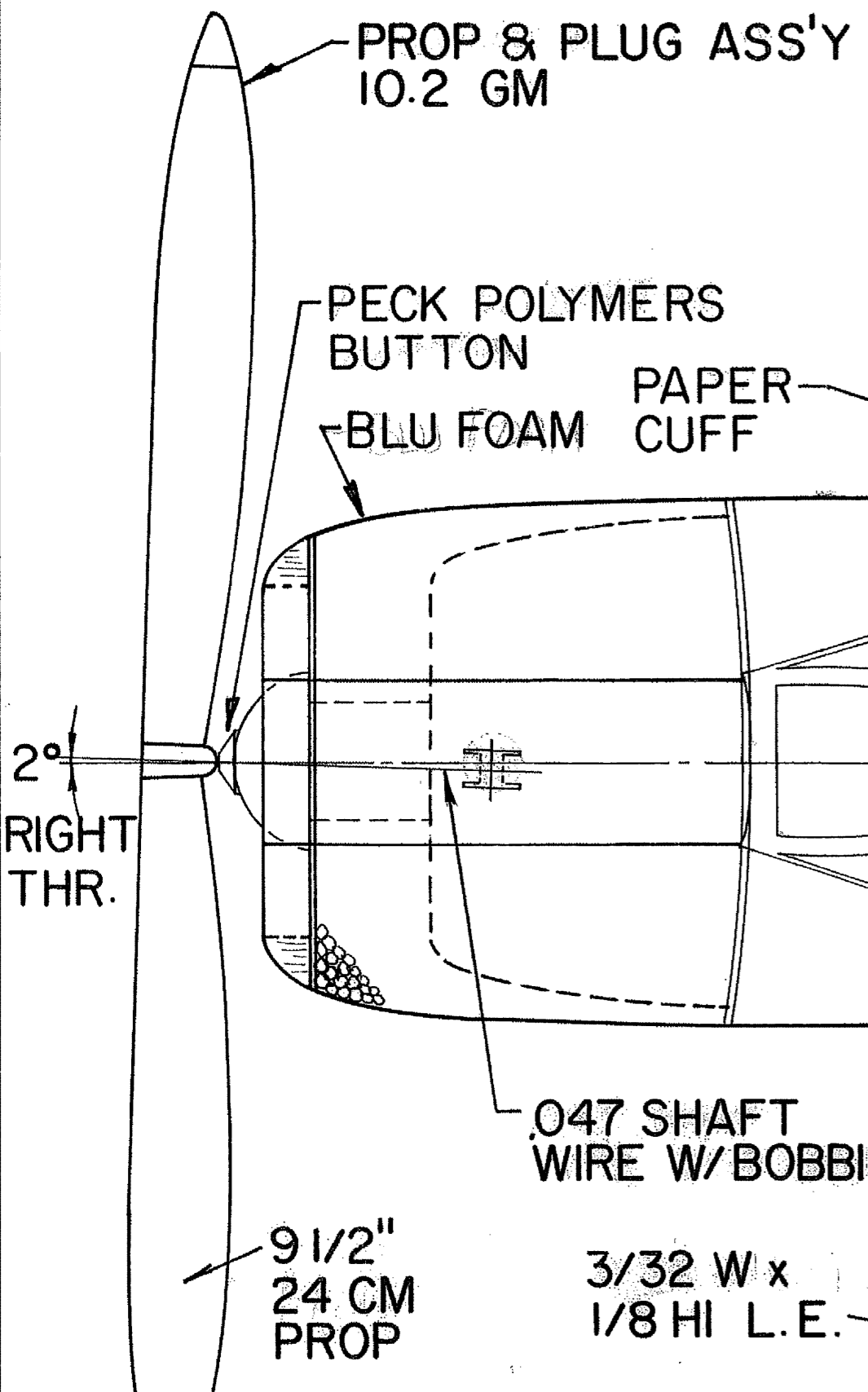
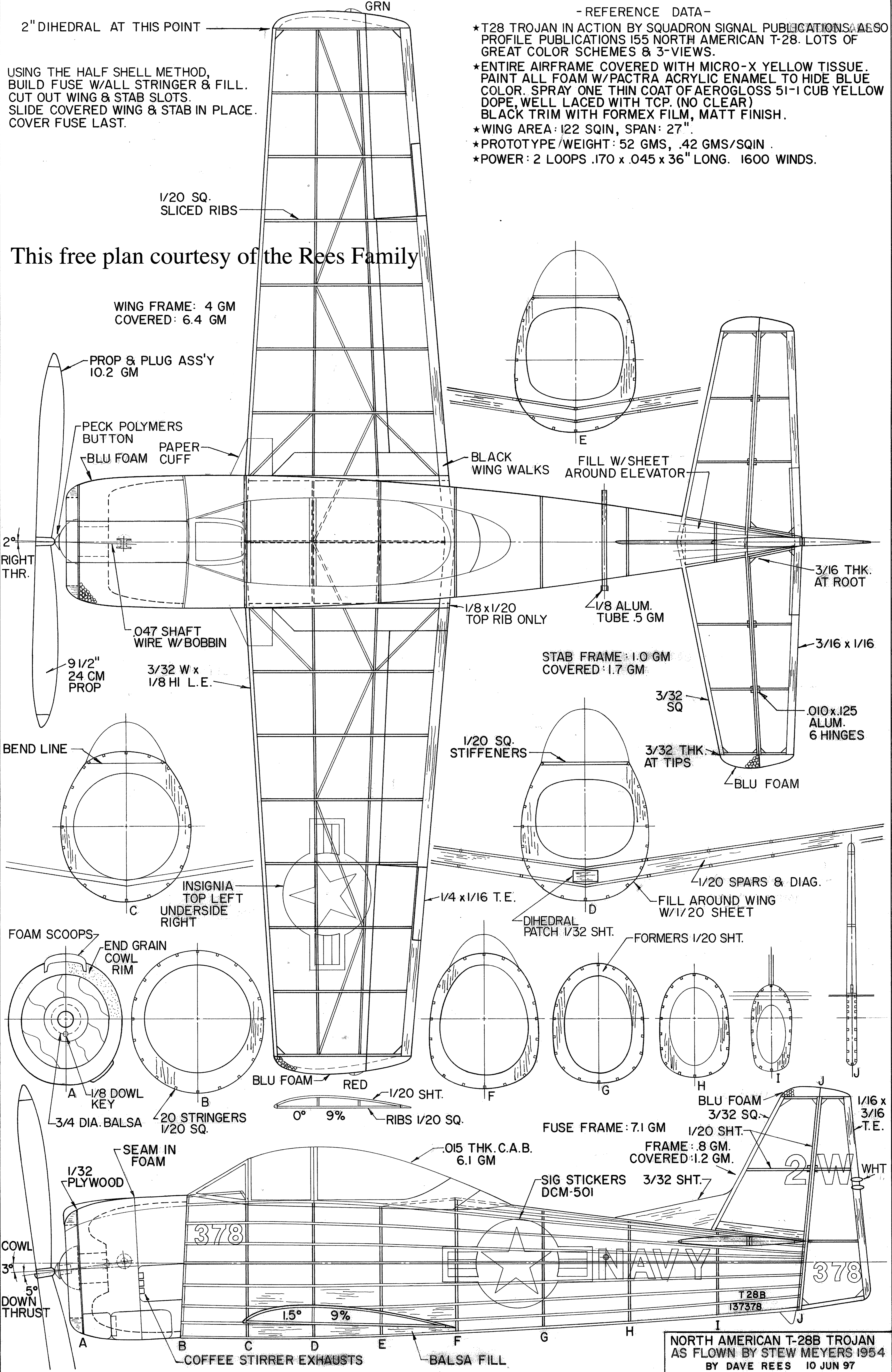
USING THE HALF SHELL METHOD,
BUILD FUSE W/ALL STRINGER & FILL.
CUT OUT WING & STAB SLOTS.
SLIDE COVERED WING & STAB IN PLACE.
COVER FUSE LAST.

- REFERENCE DATA -

- *T28 TROJAN IN ACTION BY SQUADRON SIGNAL PUBLICATIONS. ALSO PROFILE PUBLICATIONS 155 NORTH AMERICAN T-28. LOTS OF GREAT COLOR SCHEMES & 3-VIEWS.
- *ENTIRE AIRFRAME COVERED WITH MICRO-X YELLOW TISSUE. PAINT ALL FOAM W/PACTRA ACRYLIC ENAMEL TO HIDE BLUE COLOR. SPRAY ONE THIN COAT OF AEROGLOSS 51-1 CUB YELLOW DOPE, WELL LACED WITH TCP. (NO CLEAR)
- *BLACK TRIM WITH FORMEX FILM, MATT FINISH.
- *WING AREA: 122 SQIN, SPAN: 27"
- *PROTOTYPE/WEIGHT: 52 GMS, .42 GMS/SQIN
- *POWER: 2 LOOPS .170 x .045 x 36" LONG. 1600 WINDS.

This free plan courtesy of the Rees Family

WING FRAME: 4 GM
COVERED: 6.4 GM



NORTH AMERICAN T-28B TROJAN
AS FLOWN BY STEW MEYERS 1954
BY DAVE REES 10 JUN 97