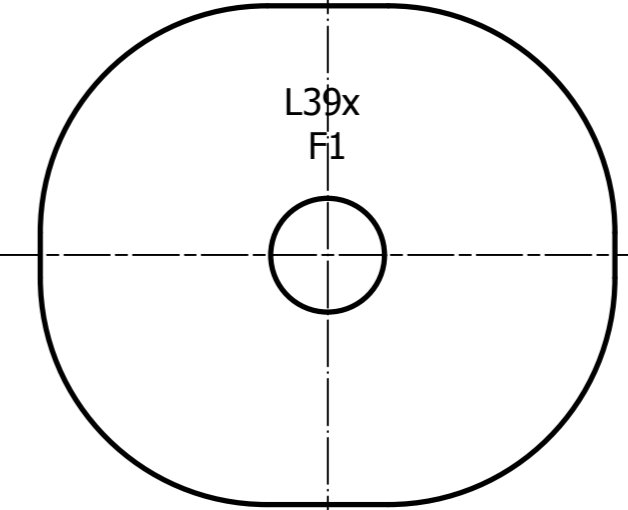
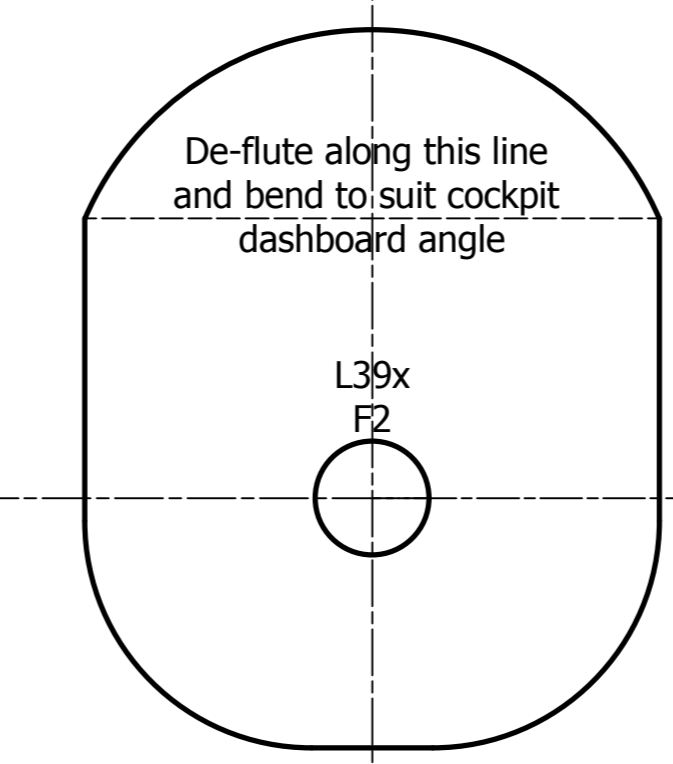
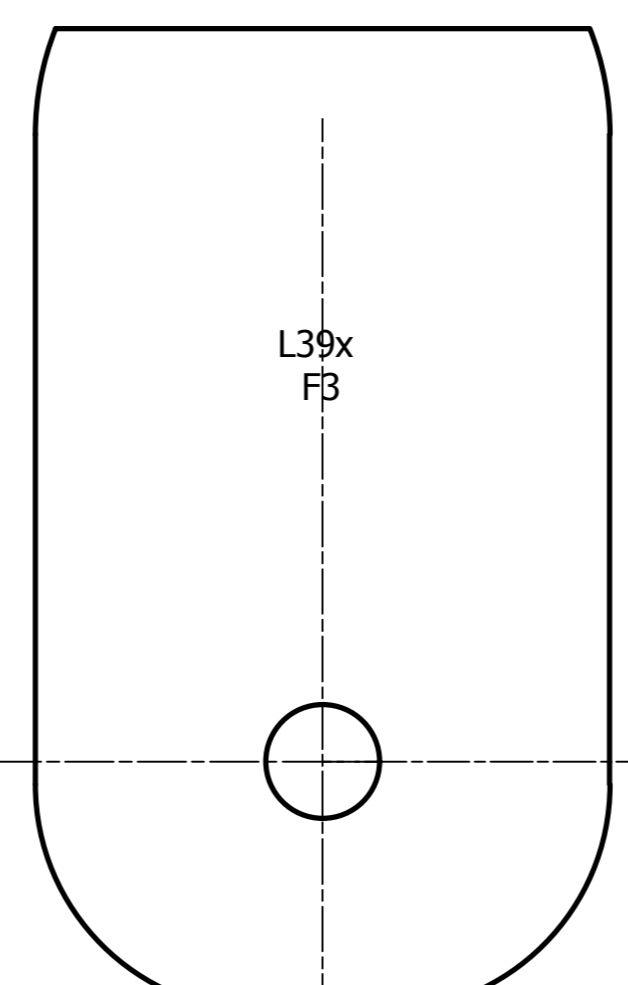
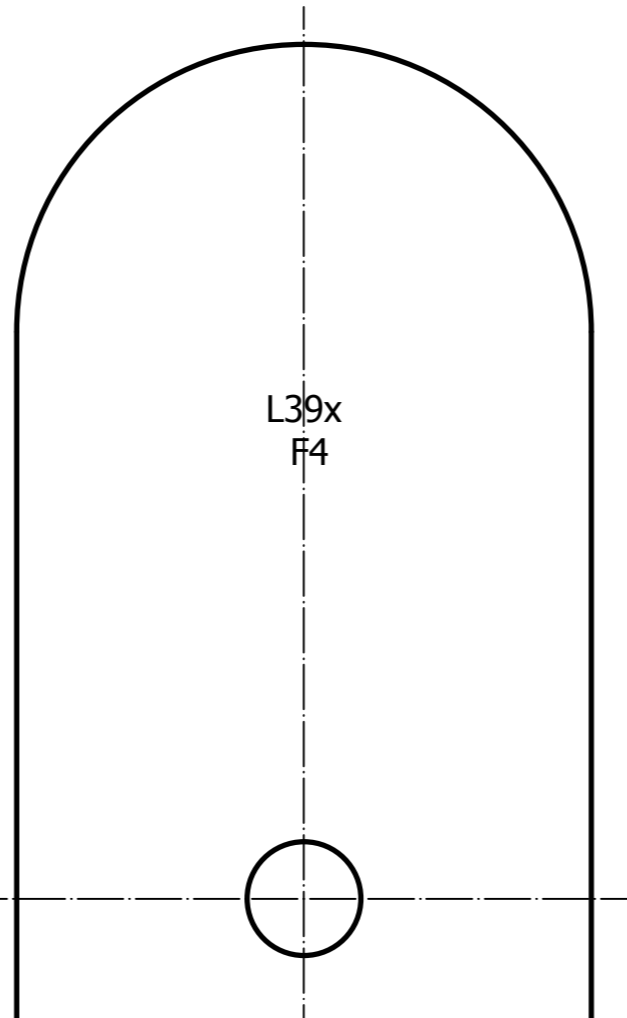
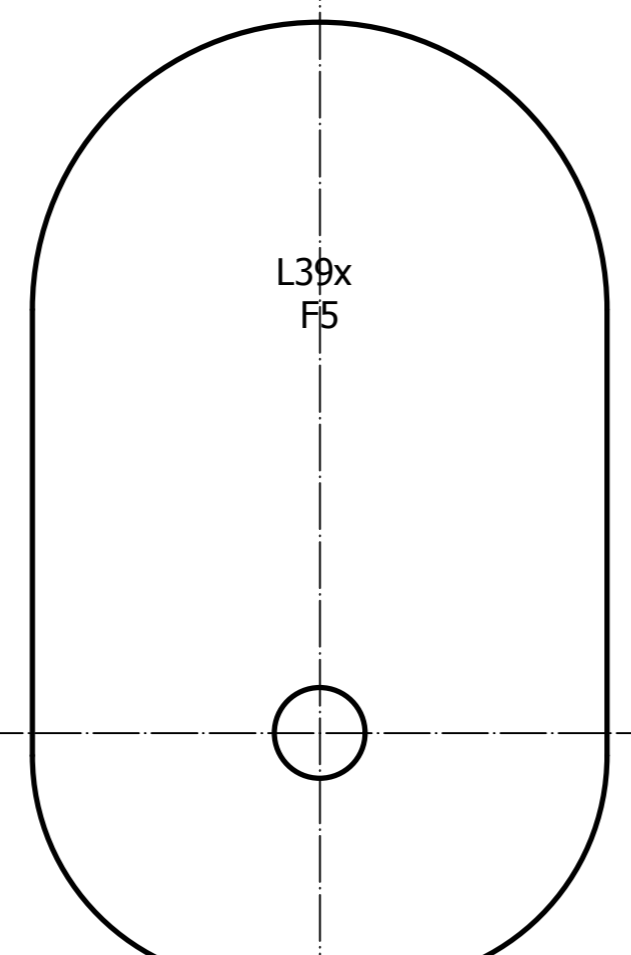
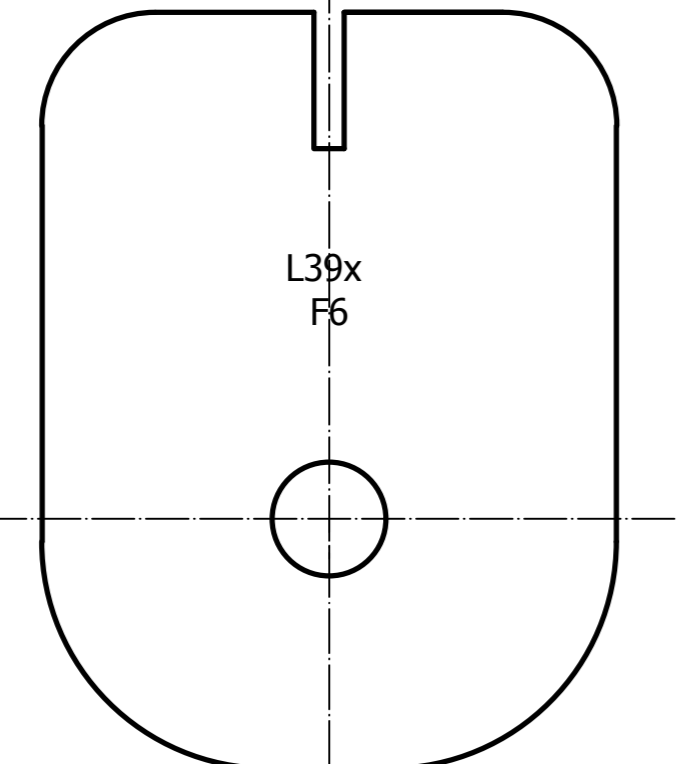
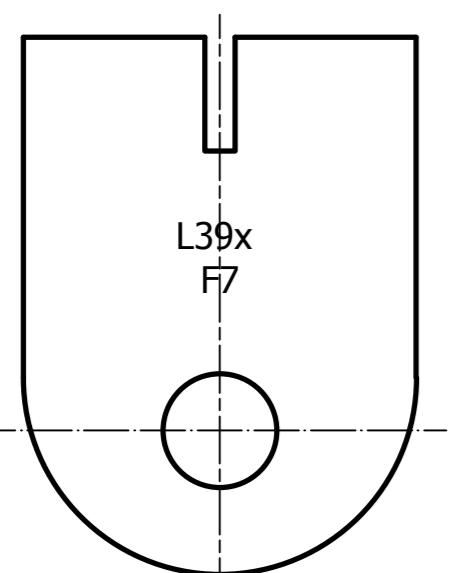
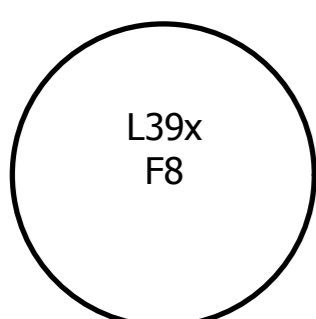
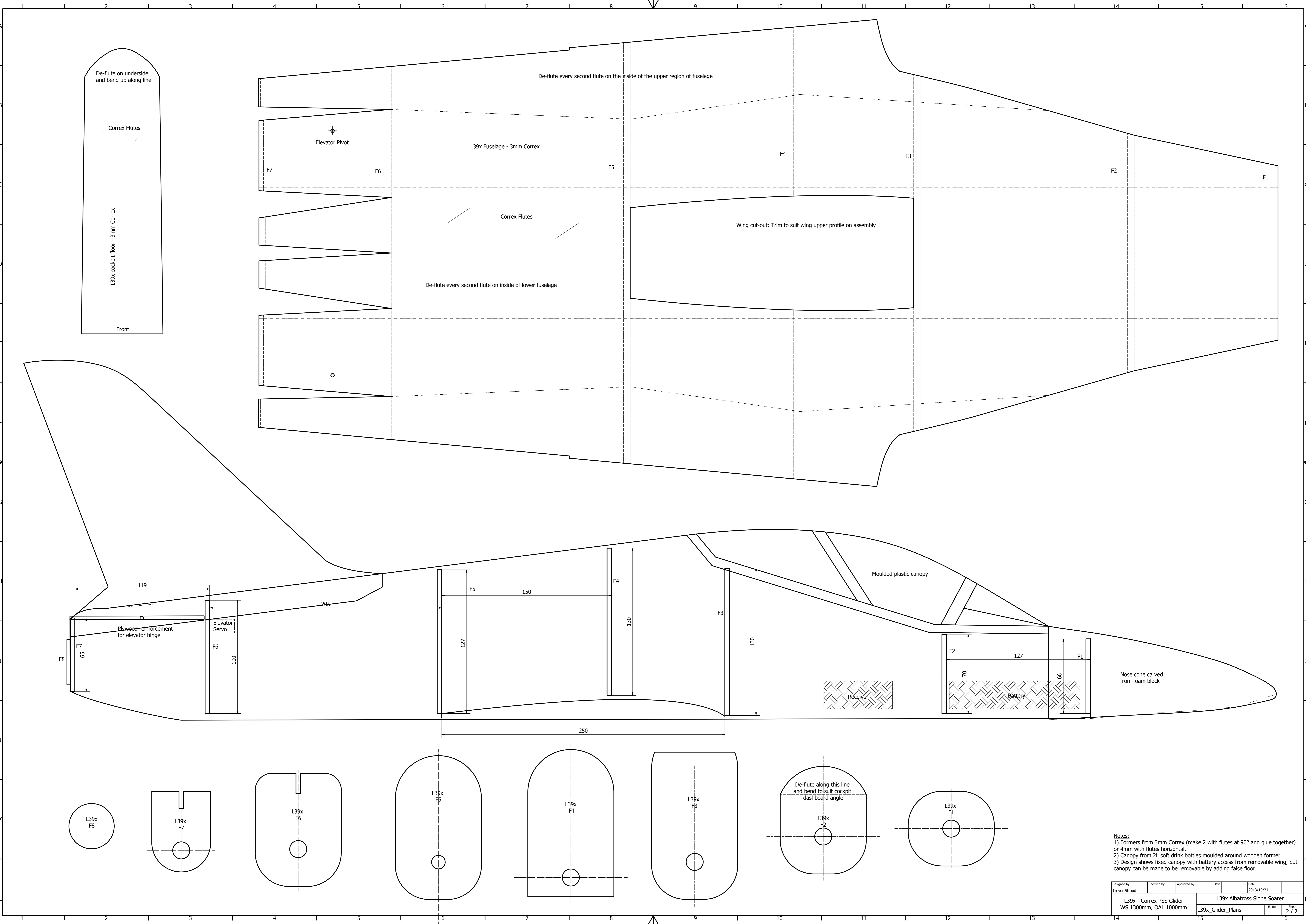


**General Information:**  
 The L39x Albatross is a 1300mm wingspan Correx version of the Aero L39 Albatross high performance jet trainer. The fuselage is identical to the Hawk Tx Correx model except for a larger F3 which has moved back, and a longer, thinner nosecone. This plan is plotted on an A0 sheet and must be printed full size (1:1 scale).

**Build Notes:**  
 1) Wing dihedral = 60mm on one side  
 2) Rear elevators mounted on central pivot which passes through fuselage  
 3) Rear fuselage reinforced on the inside with 3mm ply at elevator hinge  
 4) Bend one side of elevator joiner and attach to elevator before passing through fuselage and bending the other side.

Designed by Trevor Stroud	Checked by	Approved by	Date	Date 2013/10/24
L39x - Correx PSS Glider WS 1300mm, OAL 1000mm		L39x Albatross Slope Soarer		
L39x_Glider_Plans		Sheet 1 / 2		



Notes:  
 1) Formers from 3mm Correx (make 2 with flutes at 90° and glue together) or 4mm with flutes horizontal.  
 2) Canopy from 2L soft drink bottles moulded around wooden former.  
 3) Design shows fixed canopy with battery access from removable wing, but canopy can be made to be removable by adding false floor.

Designed by Trevor Stroud	Checked by	Approved by	Date 2013/10/24
L39x - Correx PSS Glider WS 1300mm, OAL 1000mm		L39x Albatross Slope Soarer L39x_Glider_Plans	
Edition 2 / 2		Sheet 2 / 2	