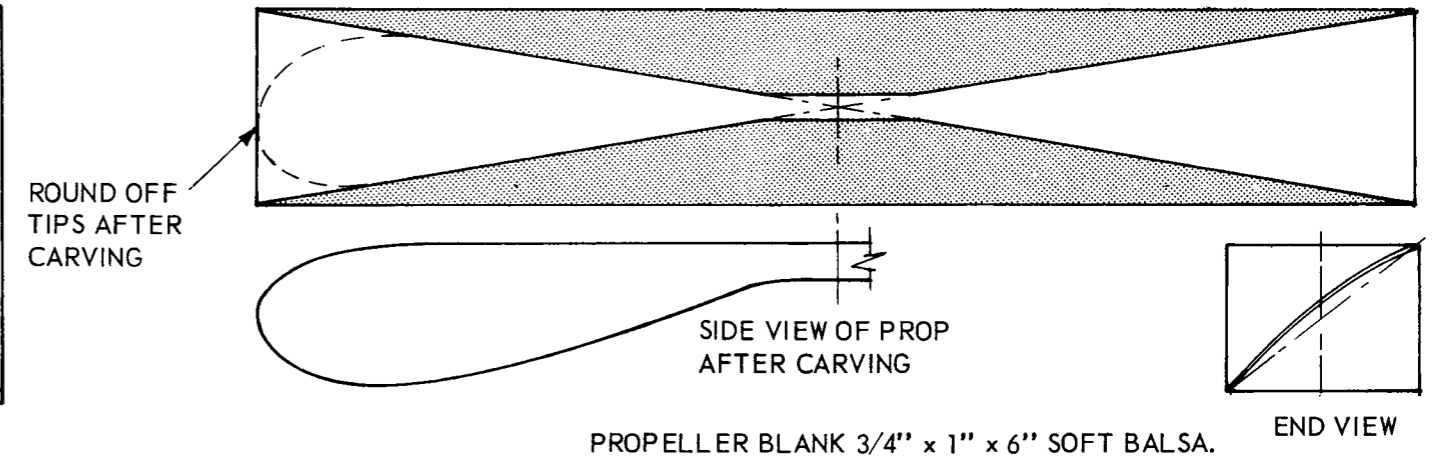
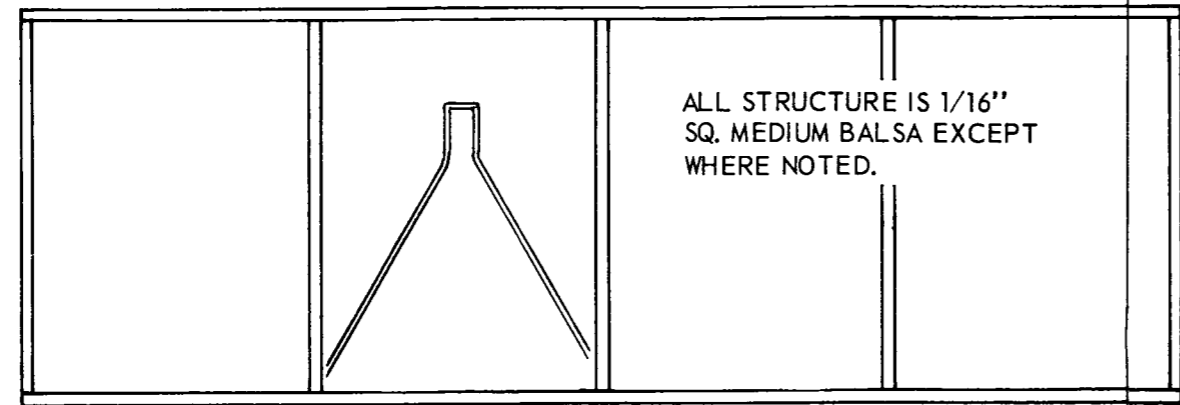
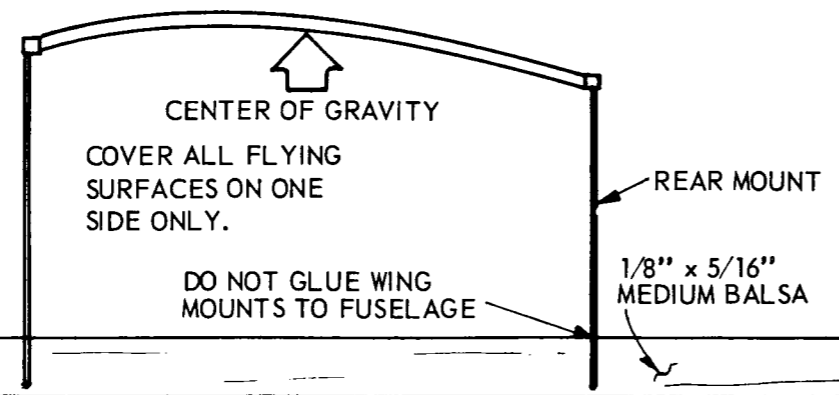
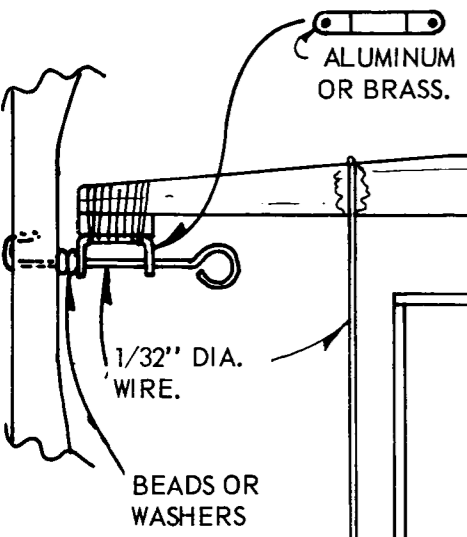
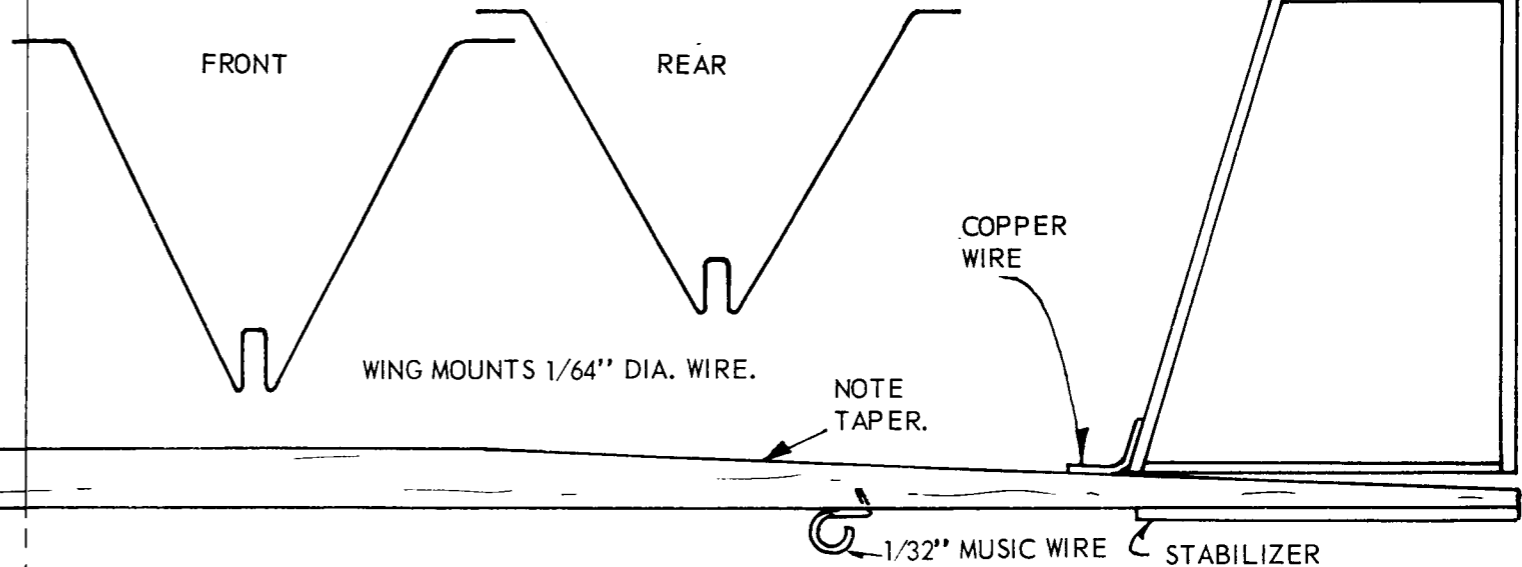
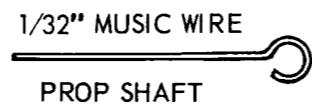
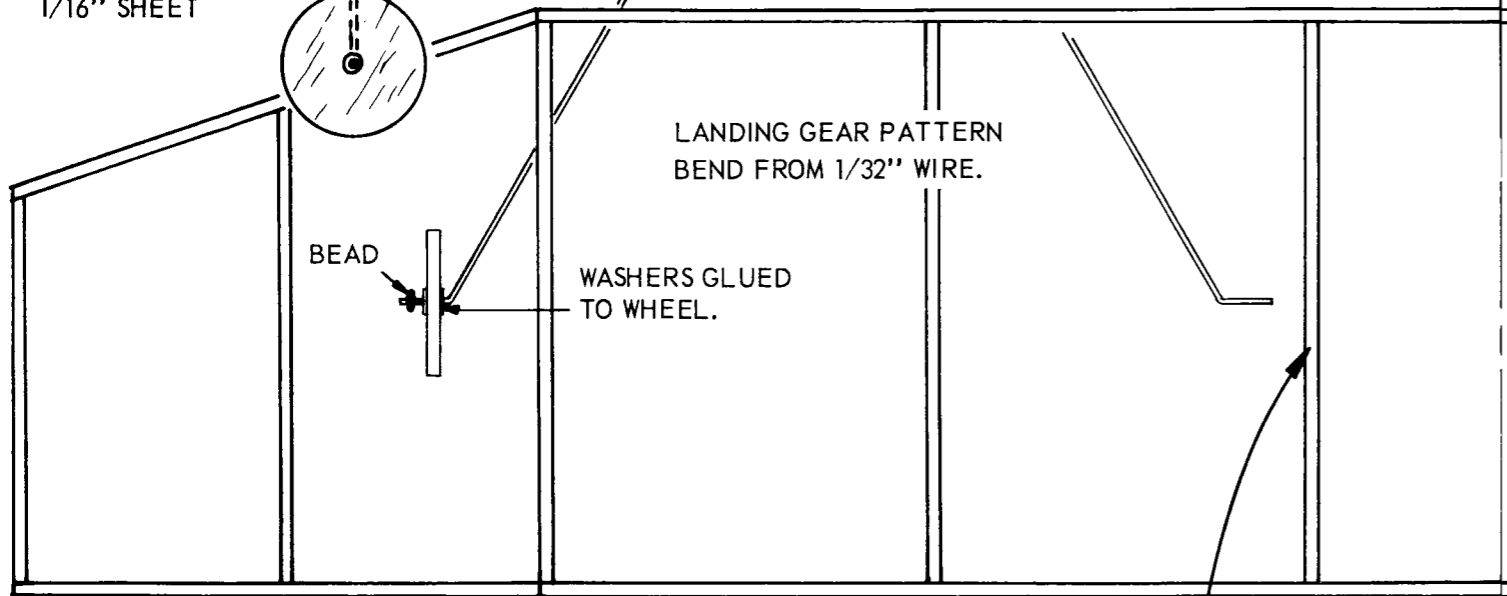
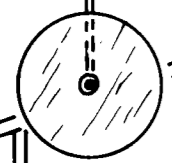


MOTOR:
 SIG 1/24" POWER STRIP OR
 1/8" FLAT RUBBER, 1/2 TIMES
 AS LONG AS DISTANCE BETWEEN
 HOOKS.



WHEELS FROM 1/16" SHEET

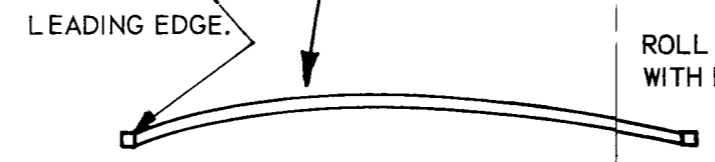
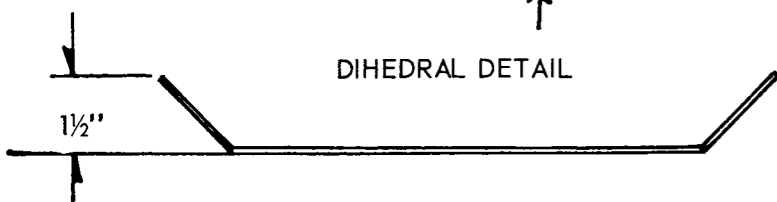


NORTH PACIFIC 5 1/2" DIA. PROP & NOSE ASS'Y MAY BE SUBSTITUTED.

1/16" SQ. Balsa RIBS.

the ROSS FLYER

A STURDY STICK MODEL



ROLL LOWER SIDE OF RIBS WITH PENCIL TO MAKE CURVE.

DIHEDRAL BREAK

DESIGNED & DRAWN BY *CLARK ROSS*